

CENTRAL SERVICES



FLEET & FACILITIES MANAGEMENT

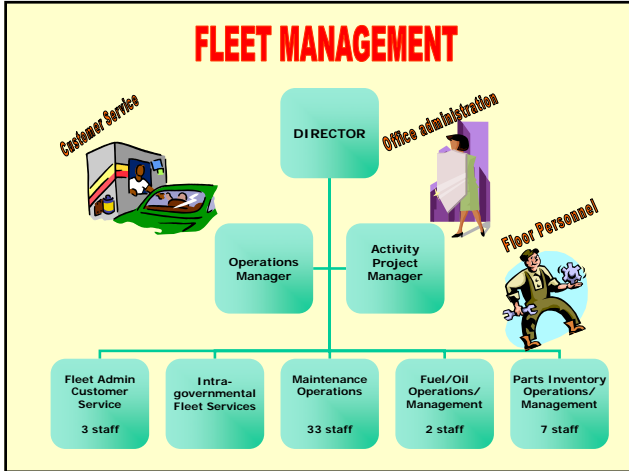
GEORGE BAKER

CENTRAL SERVICES DIRECTOR

Mission Statement

The Central Services Division is responsible for the planning, construction, acquisition, and maintenance of all county facilities and vehicles. The goal of this support division is to maximize the utilitarian value of county resources while optimizing operational and capital costs. Strategic planning and visionary leadership will determine the destiny of the division. Central Services team members are proud to provide safe, clean, and environmentally-friendly county facilities and vehicles, as well as efficient, cost-effective, customer-focused repair and maintenance services.





SCOPE OF SERVICES AVAILABLE

5 Facilities and Field Service

PREVENTIVE MAINTENANCE AND REPAIRS, EAST/WEST FIELD SERVICE TRUCKS, GENERATOR PM & LOAD BANKING, FIELD SERVICE PM'S, EMERGENCY RESPONSE, ACCIDENTS, INTRA-GOVERNMENTAL, FORD & GM IN-HOUSE WARRANTY, PARTS INVENTORY AND ISSUE AT 3 LOCATIONS

INDIAN LAKE ROAD 	TOMOKA LANDFILL 	MOSQUITO CONTROL 	DELTONA SHOP
LUBE SHOP 	BODY SHOP 	LIGHT EQUIPMENT SHOP 	HEAVY EQUIPMENT SHOP

VOLUSIA COUNTY

FLEET COMPOSITION - TOTAL 2,259 PIECES of EQUIPMENT (AUG 2009)

365 patrol cars (16.3%) 	92 ATV, golf carts, buses, forklifts, misc. vehicles (4.1%) 	189 sedans (8.4%) 	62 mowers (2.7%)
570 light trucks, SUV's (25.3%) 	103 rescue vehicles (4.6%) 	156 heavy and special usage trucks (6.9%) 	469 equipment (20.9%)
47 tractors (2.1%) 	106 vans (4.7%) 	90 engineering vehicles (4.0%) 	

FUEL AND OIL

SEVEN FACILITIES & MOBILE FUEL DELIVERIES

MOBILE FUEL TRUCK 	DELAND TRANSFER STATION 	TOMOKA LANDFILL 	NEW SMYRNA BEACH
HOLLY HILL 	DELAND ROAD & BRIDGE 	INDIAN LAKE ROAD 	OSTEEN ROAD & BRIDGE

SUCCESSSES

MAINTENANCE SERVICES

- * High quality work (ASE Blue Seal)
- * Low labor rate (\$55/hr)
- * No mileage charge for field service
- * Average 35% below private rates

LEASE / RENTAL PROGRAM

- * Centralized management
- * Standardized fleet
- * On-time vehicle replacement
- * Unbeatable rates
- * Life cycle optimization

DAILY POOL CAR RENTALS

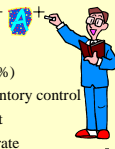
- * Very low rates
- * Seasonal and short-term use vehicles
- * 760 rentals last year
- * Automated web-based rental system

PARTS OPERATIONS

- * Low mark-up on parts (15%)
- * Automated bar-coded inventory control
- * Responsive vendor support
- * 80% parts on-demand fill rate

FUEL OPERATIONS


- * 10-15 cents a gallon below local prices
- * Inter-local agreements with 10 agencies
- * Facility up-grade program
- * Automated RF dispensing
- * Mobile fueling (5 trucks)
- * Fuel capacity master-plan



Future goals


Look...a hybrid vehicle!

Fuel economy
Low pollution



- CONTINUE TO PURCHASE FUEL EFFICIENT VEHICLES (Impala)
- CONTINUE TO PURCHASE ENVIRONMENTALLY-FRIENDLY HYBRID-ELECTRIC AND FLEX-FUEL VEHICLES
- EXPAND THE USE OF BIO-DIESEL FUEL
- INSTALL A PASSIVE (RADIO FREQ.) FUELING SYSTEM FOR EACH VEHICLE IN THE LEASE/RENTAL FLEET
- COMPLETE FUEL SITE INTER-LOCAL AGREEMENT WITH V.C.S.B.
- CONTINUE COLLABORATIVE PLANS FOR A GARAGE AND FUEL SITE TO BE USED BY V.C., VOTRAN, AND V.C.S.B.
- GO 'GREEN' IN ALL OPERATIONS PER COUNTY GOALS


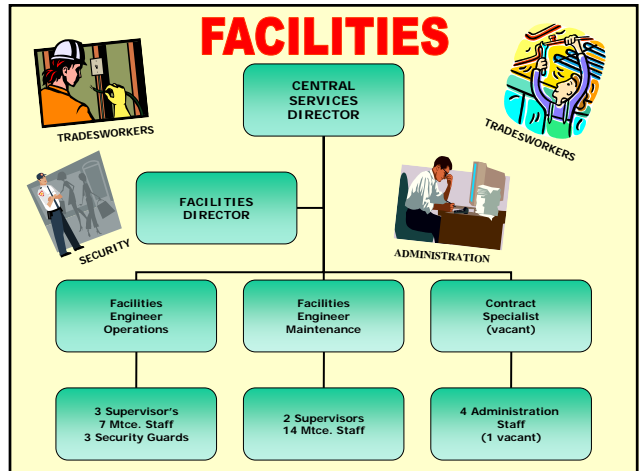
GOING "GREEN" ...



FACILITIES SERVICES

Facility Assets and Characteristics

- The County owns 420 buildings and leases another 38. The Facilities Services division is involved directly or indirectly in maintenance efforts for all of them.
 - 81 Buildings
 - 14 Airport Facilities
 - 15 Libraries
 - 24 Fire Stations
 - 33 Utility Plants
 - 17 Cemeteries
 - 35 Parks
 - 173 Beach Facilities
 - 10 Communication Towers

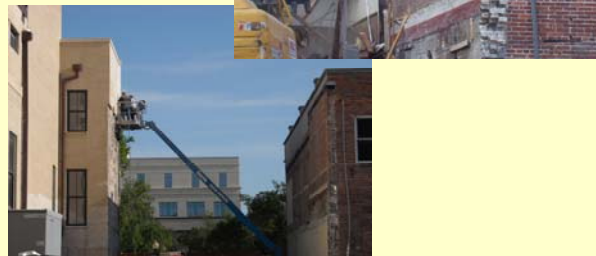


Beach Administration Headquarters



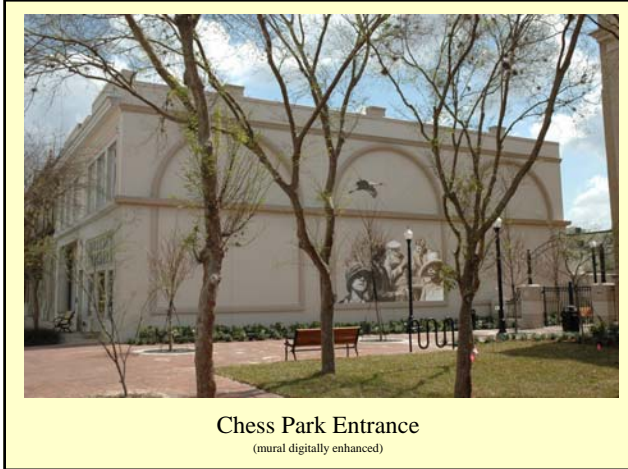
Pre-Chess Park

**Demolition for
Chess Park**



Chess Park – water wall





Chess Park Entrance
 (mural digitally enhanced)

 **GREEN INITIATIVES.....**



Justice Center – Lighting Retrofit Project

- Total cost: \$28,000
- Annual electrical savings: \$38,000

 **GREEN INITIATIVES.....**



T.C. Kelly Administration Building – Lighting Retrofit Project

- Annual electrical savings: \$8,700

 **GREEN INITIATIVES.....**



250 North Beach St. (Eastside Administration Building)

- Installation of 28 high efficiency A/C units



GREEN INITIATIVES.....



Historic Courthouse
County's 1st natural gas generator – 350 KW



GREEN INITIATIVES.....

- **Building Control Automation-over 650,000 square feet**
 - Historic Courthouse
 - T.C. Kelly Administration
 - Volusia County Courthouse
 - Information Technology
 - Volusia County Branch Jail
 - Volusia County Corrections
 - Justice Center
 - New Smyrna Beach Courthouse
 - Daytona Beach International Airport
 - Ocean Center