

VOLUSIA COUNTY  
PUBLIC WORKS DEPARTMENT

ROAD & BRIDGE DIVISION

Judy Sloane, Director



1

## Our Mission

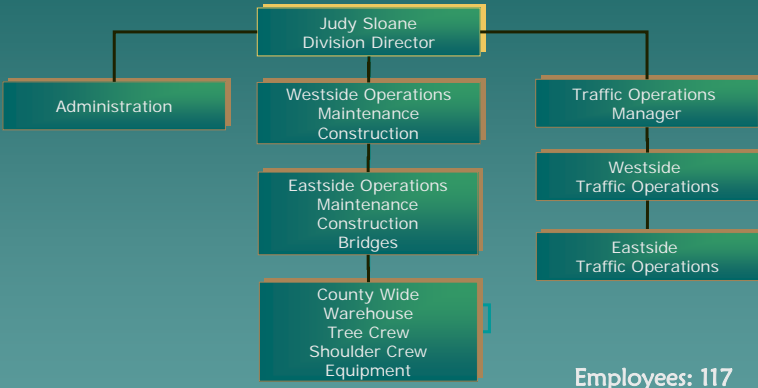
“Excellence in Maintenance”

---

To Maintain the County’s transportation system of roads and bridges, provide a safe system and protect the investment in that system. To develop and provide high levels of service by planning, scheduling, directing and controlling work.

2

# Organizational Structure



# Road & Bridge Resources

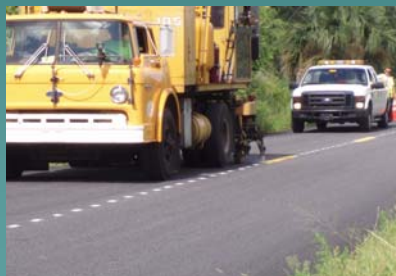
- 4 major work facilities
- Centralized warehouse
- 160 employees
- 9 Inmate crews



- 120 pieces of equipment worth over \$10 million
- Over \$750,000 in raw materials

## Road & Bridge Responsibilities

- 982 miles of paved maintained roads
- 108 miles of maintained dirt roads
- 48 fixed bridges; 3 bascule bridges
- 2,578 acres of roadside mowing
- 289 miles of sidewalk
- 17 cemeteries
- 50,000 traffic signs



5

## What is Routine Maintenance ?

- Grading & Repairing Dirt Roads
- Mowing of R/W
- Asphalt & Pothole Repairs
- Roadway Shoulder Repairs
- Sidewalk Repair & Maintenance
- Tree Removal & Trimming
- Guardrail Repairs
- Litter & Dead Animal Removal
- Cleaning of Signs
- Striping of Roadways
- Safety Inventory of all Roads and Structures

6

# Road & Bridge At Work



# We do emergency response and Special Events!

- Storm debris removal
- Fighting forest fires
- Flooding
- Erosion control
- Sinkholes in the ROW
- Race Week, Bike Week and Spring Break



## Cost Saving Measures

- ◆ Reduces number of employees
- ◆ Suspended dirt road paving program
- ◆ Reduced number of pieces of heavy equipment
- ◆ Improved efficiency of mowing urban right of ways by using smaller mowing equipment
- ◆ Improved efficiency of sign fabrication with the purchase of pre fabricated signs
- ◆ Improved efficiency of asphalt patching with addition of asphalt truck
- ◆ Reduced landfill disposal costs with composting and burn pits.

9

## Road & Bridge Division

---

### Current Issues

- Reduction of revenues from gas taxes
- Increase in urbanized ROW to maintain
- Three aging bascule bridges
- Increased demand for services, especially by cities
- Budgetary constraints causing decreasing levels of service

10

QUESTIONS?