

**Volusia County's
Island Management Plan**

Canaveral Section

ISLAND INDEX CODE: ML/HC-FF72-1

COMMON NAME(S): N/A

ISLAND SIZE (sq ft/acres): 421279/9.7

GPS LOCATION: 28.80938 N, 80.79658 W

ISLAND CLASSIFICATION (best use category): Recreation

OWNED BY: Canaveral National Seashore

MANAGED BY OR EASEMENTS GIVEN TO:

- FIND No.: MSA V-12
- US No.: 349
- Additional: N/A

ANIMAL SPECIES LOCATED:

Columbigallina passerina (Ground Dove)

Anolis carolinensis (Green Anole)

Polistes spp. (Wasps)

PLANT SPECIES:

Baccharis halimifolia (Saltbush)

Batis mairtima (Saltwort)

Borrchia frutescens (Sea Daisy)

Cnidocolus stimulosus (Stinging Nettle)

Juniperus silicicola (Southern Red Cedar)

Opuntia humifusa (Prickly-pear Cactus)

Sabal palmetto (Sabal Palm)

Schinus terebinthifolius (Brazilian Pepper Tree)

CURRENT STUCTURES OR FACILITIES ON ISLAND: Barbeque pit at coordinates 28.80938 N, 80.79658 W.

ADDITIONAL INFORMATION: The only *Schinus terebinthifolius* (Brazilian Pepper) growth was on the eastern edge of island at coordinates 28.80980 N, 80.79598 W. Nine one gallon water containers along with a tarp were present on the island at time of survey. A raised sand

ML/HC-FF72-1



3

ISLAND INDEX CODE: ML/HC-FF72-2

COMMON NAME(S): N/A

ISLAND SIZE (sq ft/acres): 155284/3.5

GPS LOCATION: 28.80708 N, 80.79496 W

ISLAND CLASSIFICATION (best use category): Recreation

OWNED BY: Canaveral National Seashore

MANAGED BY OR EASEMENTS GIVEN TO:

- FIND No.: MSA V-12
- US No.: 349
- Additional: N/A

ANIMAL SPECIES LOCATED: None

PLANT SPECIES:

Avicennia germinans (Black Mangrove)

Baccharis hamifolia (Salt Bush)

Batis maritima (Saltwort)

Commelina benghalensis (Spiderwort)

Juniperus silicicola (Southern Red Cedar)

Opuntia humifusa (Prickly-pear Cactus)

Quercus myrtifolia (Myrtle Oak)

Rhizophora mangle (Red Mangrove)

Sabal palmetto (Sabal Palm)

Schinus terebinthifolius (Brazilian pepper)

Yucca filamentosa (Adam's Needle)

CURRENT STRUCTURES OR FACILITIES ON ISLAND: None

ADDITIONAL INFORMATION: Sapling *Schinus terebinthifolius* (Brazilian Pepper) stand at the coordinates 28.80677 N, 80.79450 W. There was also evidence of shoreline erosion on the eastern side facing the channel, therefore subject to ongoing boat wake. High concentration of mosquitoes.

ML/HC-FF72-2



0 250 500 Feet

ISLAND INDEX CODE: ML/HC-GG72-1

COMMON NAME(S): N/A

ISLAND SIZE (sq ft/acres): 170998/3.9

GPS LOCATION: 28.80476 N, 80.79337 W

ISLAND CLASSIFICATION (best use category): Conservation

OWNED BY: Canaveral National Seashore

MANAGED BY OR EASEMENTS GIVEN TO:

- FIND No.: MSA V-12
- US No.: 349
- Additional: N/A

ANIMAL SPECIES LOCATED:

Limulus polyphemus (American Horse Shoe Crab)

Polistes spp. (Wasps)

PLANT SPECIES:

Batis maritima (Saltwort)

Borrchia frutescens (Sea Daisy)

Coccoloba uvifera (Sea Grape)

Distichlis spicata (Saltgrass)

Juniperus silicicola (Southern Red Cedar)

Limonium carolinianum (Sea Lavender)

Opuntia humifusa (Prickly-pear Cactus)

Sabal palmetto (Cabbage Palm)

Schinus terebinthifolius (Brazilian Pepper Tree)

Sesuvium portulacastrum (Sea Purslane)

Solidago sempervirens (Seaside Goldenrod)

CURRENT STRUCTURES OR FACILITIES ON ISLAND: Campsite.

ADDITIONAL INFORMATION: Major shoreline erosion (eastern shore), moderate human usage.

ML/HC-GG72-1



0 250 500 Feet

ISLAND INDEX CODE: ML/HC-GG72-2

COMMON NAME(S): N/A

ISLAND SIZE (sq ft/acres): 264035/6

GPS LOCATION: 28.80141 N, 80.79247 W

ISLAND CLASSIFICATION (best use category): Conservation

OWNED BY: Canaveral National Seashore

MANAGED BY OR EASEMENTS GIVEN TO:

- FIND No.: MSA V-12
- US No.: 349
- Additional: N/A

ANIMAL SPECIES LOCATED:

Polistes spp. (Wasps)

PLANT SPECIES:

Avicennia germinans (Black Mangrove)

Baccharis halimifolia (Saltbush)

Batis maritima (Saltwort)

Borrichia frutescens (Sea Daisy)

Cladium jamaicense (Sawgrass)

Juniperus silicicola (Southern Red Cedar)

Laguncularia racemosa (White Mangrove)

Opuntia humifusa (Prickly-pear Cactus)

Schinus terebinthifolius (Brazilian Pepper Tree)

Serenoa repens (Saw Palmetto)

Sesuvium portulacastrum (Sea Purslane)

Solidago sempervirens (Seaside Goldenrod)

CURRENT STRUCTURES OR FACILITIES ON ISLAND: None

ADDITIONAL INFORMATION: Northern tip of island has a thin strip of land that occasionally becomes submerged by water. Growth includes species of *Avicennia germinans* (Black Mangrove), *Borrichia frutescens* (Sea Daisy), *Sesuvium portulacastrum* (Sea Purslane), *Schinus terebinthifolius* (Brazilian Pepper Tree) (approx. four trees total on that strip).

ML/HC-GG72-2



0 250 500 Feet

ISLAND INDEX CODE: ML/HC-GG73-0

COMMON NAME(S): N/A

ISLAND SIZE (sq ft/acres): 106018/2.4

GPS LOCATION: 28.79822 N, 80.78970 W

ISLAND CLASSIFICATION: Conservation

OWNED BY: Canaveral National Seashore

MANAGED BY OR EASEMENTS GIVEN TO: N/A

ANIMAL SPECIES LOCATED: None

PLANT SPECIES:

Batis maritima (Saltwort)

Borrchia frutescens (Sea Daisies)

Juniperus silicicola (Southern Red Cedar)

Opuntia humifusa (Prickly-pear Cactus)

Sabal palmetto (Sabal Palm)

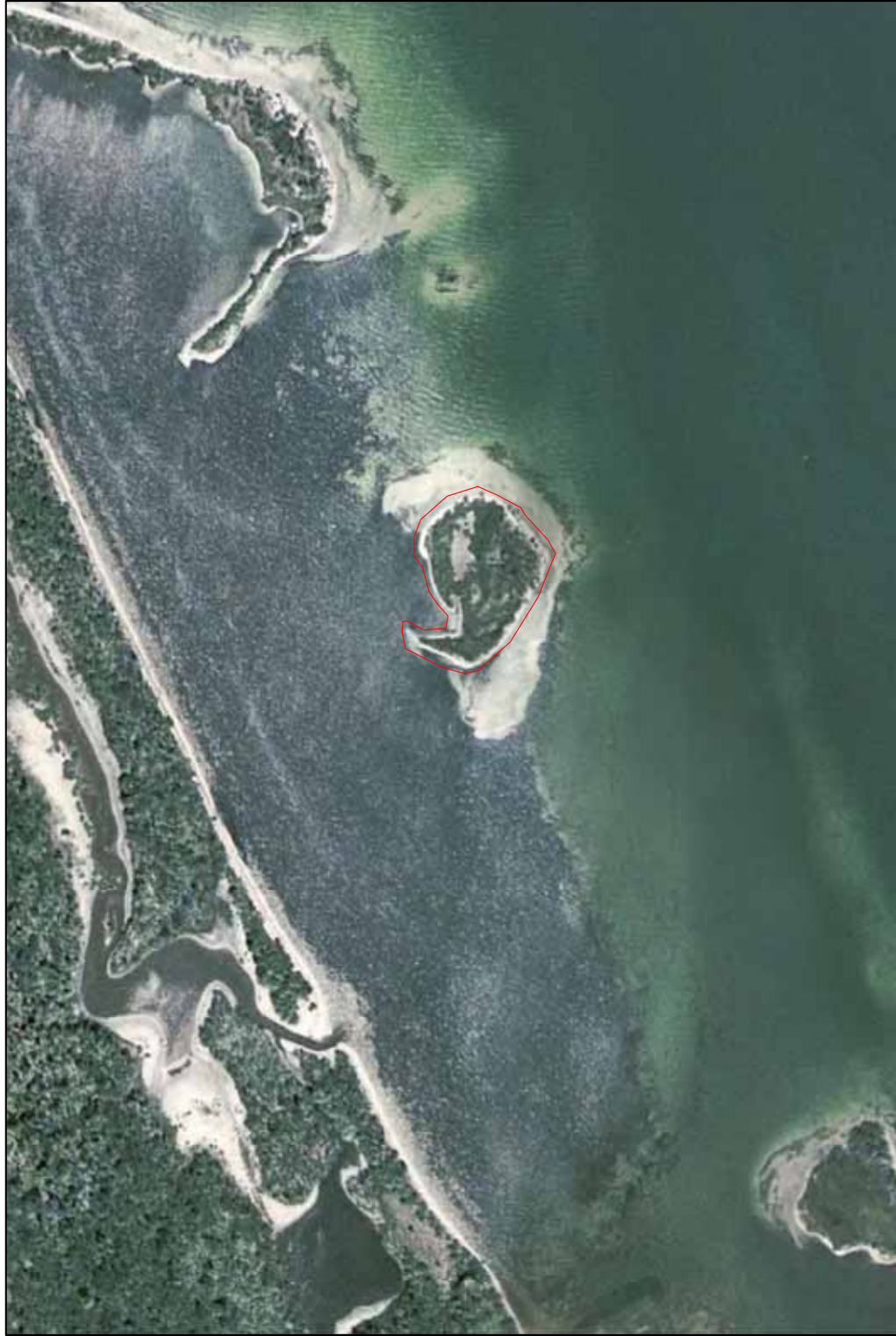
Schinus terebinthifolius (Brazilian Pepper Tree)

Sesuvium portulacastrum (Sea Purslane)

CURRENT STRUCTURES OR FACILITIES ON ISLAND: None

ADDITIONAL INFORMATION: *Juniperus silicicola* (Southern Red Cedar) is the dominant tree species; understory is dominated by *Schinus terebinthifolius* (Brazilian Pepper) saplings.

ML/HC-GG73-0



0 250 500 Feet

ISLAND INDEX CODE: ML/HC-GG73-1

COMMON NAME(S): N/A

ISLAND SIZE (sq ft/acres): 165805/3.8

GPS LOCATION: 28.79438 N, 80.78699 W

ISLAND CLASSIFICATION: Recreation

OWNED BY: Canaveral National Seashore

MANAGED BY OR EASEMENTS GIVEN TO: N/A

ANIMAL SPECIES LOCATED:

Cardisoma guanhumi (Blue Land Crab)

Corvus brachyrhynchos (American Crow)

PLANT SPECIES:

Borrichia frutescens (Sea Daisy)

Ilex vomitoria (Yaupon Holly)

Juniperus silicicola (Southern Red Cedar)

Laguncularia racemosa (White Mangrove)

Sabal palmetto (Cabbage Palm)

Schinus terebinthifolius (Brazilian Pepper Tree)

Sesuvium portulacastrum (Sea Purslane)

CURRENT STRUCTURES OR FACILITIES ON ISLAND: There seems to be a campsite for oyster/fish catchers.

ADDITIONAL INFORMATION: The campsite is the only apparent clearing on the island. The understory is dominated by sapling *Schinus terebinthifolius* (Brazilian Pepper Tree).

ML/HC-GG73-1



0 250 500 Feet

ISLAND INDEX CODE: ML/HC-GG73-2

COMMON NAME(S): N/A

ISLAND SIZE (sq ft/acres): 868313/20

GPS LOCATION: 28.79209 N, 80.78538 W

ISLAND CLASSIFICATION (best use category): Conservation

OWNED BY: Canaveral National Seashore

MANAGED BY OR EASEMENTS GIVEN TO:

- FIND No.: MSA V-12
- US No.: 349
- Additional: N/A

ANIMAL SPECIES LOCATED: None

PLANT SPECIES:

Baccharis halimifolia (Saltbush)

Batis maritima (Saltwort)

Borrchia frutescens (Sea Daisy)

Juniperus silicicola (Southern Red Cedar)

Lantana camara (Lanatana)

Quercus virginiana (Live oak)

Sabal palmetto (Cabbage Palm)

Yucca filamentosa (Adam's Needle)

CURRENT STUCTURES OR FACILITIES ON ISLAND: None

ADDITIONAL INFORMATION: Ring of *Juniperus silicicola* (Southern Red Cedar) growth around the open clearing of island. A large berm spans the width of the southern tip of the island.

ML/HC-GG73-2



0 250 500 Feet

3

ISLAND INDEX CODE: ML/HC-GG74-2

COMMON NAME(S): N/A

ISLAND SIZE (sq ft/acres): 28333/.65

GPS LOCATION: 28.79105 N, 80.78431 W

ISLAND CLASSIFICATION (best use category): Conservation

OWNED BY: Canaveral National Seashore

MANAGED BY OR EASEMENTS GIVEN TO:

- FIND No.: MSA V-12
- US No.: 349
- Additional: N/A

ANIMAL SPECIES LOCATED: None

PLANT SPECIES:

Batis maritima (Saltwort)

Borrchia frutescens (Sea Daisy)

Sabal palmetto (Cabbage Palm)

Salicornia bigelovii (Glasswort)

Schinus terebinthifolius (Brazilian Pepper Tree)

CURRENT STRUCTURES OR FACILITIES ON ISLAND: None

ADDITIONAL INFORMATION: *Sabal palmetto* (Cabbage Palm) stand and *Schinus terebinthifolius* (Brazilian Pepper Tree) on Eastern edge dominates vegetation cover. Northern strip has mangrove and sea daisy growth.

ML/HC-GG74-2



0 250 500 Feet

3

ISLAND INDEX CODE: ML/HC-HH74-1

COMMON NAME(S): N/A

ISLAND SIZE (sq ft/acres): 1204170/27.6

GPS LOCATION: 28.28841 N, 80.78312 W

ISLAND CLASSIFICATION (best use category): Recreation

OWNED BY: Canaveral National Seashore

MANAGED BY OR EASEMENTS GIVEN TO:

- FIND No.: MSA B-1
- US No.: 351
- Additional: N/A

ANIMAL SPECIES LOCATED:

Cathartes aura (Turkey Vulture)

PLANT SPECIES:

Baccharis halimifolia (Saltbush)

Batis maritima (Saltwort)

Borrchia frutescens (Sea Daisy)

Juniperus silicicola (Southern Red Cedar)

Lanatana camara (Lantana)

Opuntia humifusa (Prickly-pear Cactus)

Rhizophora mangle (Red Mangrove)

Schinus terebinthifolius (Brazilian Pepper Tree)

Serenoa repens (Saw Palmetto)

Sesuvium portulacastrum (Sea Purslane)

CURRENT STUCTURES OR FACILITIES ON ISLAND: None

ADDITIONAL INFORMATION: Fire pits present. At southern end of island *Schinus terebinthifolius* (Brazilian Pepper Tree) coverage becomes more dense. In the Western edge of island healthy stands of *Rhizophora mangle* (Red Mangroves) present.

ML/HC-HH74-1



0 250 500 Feet

ISLAND INDEX CODE: ML/HC-HH74-2

COMMON NAME(S): N/A

ISLAND SIZE (sq ft/acres): 5055902/11.6

GPS LOCATION: 28.78640 N, 80.78232 W

ISLAND CLASSIFICATION (best use category): Recreation

OWNED BY: Canaveral National Seashore

MANAGED BY OR EASEMENTS GIVEN TO:

- FIND No.: MSA B-1
- US No.: 351
- Additional: N/A

ANIMAL SPECIES LOCATED: None

PLANT SPECIES:

Avicennia germinans (Black Mangrove)
Baccharis halimifolia (Saltbush)
Borrchia frutescens (Sea Daisy)
Cnidioscolus stimulosus (Stinging Nettle)
Juniperus silicicola (Southern Red Cedar)
Nephrolepis exaltata (Boston Fern)
Opuntia humifusa (Prickly-pear Cactus)
Sabal palmetto (Cabbage Palm)
Serenoa repens (Saw Palmetto)

CURRENT STRUCTURES OR FACILITIES ON ISLAND: None

ADDITIONAL INFORMATION: Fire pit present. *Nephrolepis exaltata* (Boston Fern) growing on *Sabal palmetto* (Cabbage Palm) (28.78627 N, 80.78239 W). Evidence of shore line erosion (facing the channel). The two main bodies of spoil land are connected in the middle by marsh area.

ML/HC-HH74-2



0 250 500 Feet

ISLAND INDEX CODE: ML/HC-HH75-1

COMMON NAME(S): N/A

ISLAND SIZE (sq ft/acres): 31658.5/.73

GPS LOCATION: 28.778638° N, 80.777432° W

ISLAND CLASSIFICATION (best use category): Conservation

OWNED BY: Canaveral National Seashore

MANAGED BY OR EASEMENTS GIVEN TO:

- FIND No.: MSA B-1
- US No.: 351
- Additional: N/A

ANIMAL SPECIES LOCATED: None

PLANT SPECIES:

Batis maritima (Saltwort)

Borrchia frutescens (Sea Daisy)

Rhizophora mangle (Red Mangrove)

CURRENT STUCTURES OR FACILITIES ON ISLAND: None

ADDITIONAL INFORMATION: Small population of *Rhizophora mangle* (Red Mangrove) covered island.

ML/HC-HH75-1



0 250 500 Feet

ISLAND INDEX CODE: ML/HC-HH75-2

COMMON NAME(S): N/A

ISLAND SIZE (sq ft/acres): 969468/22.3

GPS LOCATION: 28.773975 N, 80.774821 W

ISLAND CLASSIFICATION (best use category): Conservation

OWNED BY: Canaveral National Seashore

MANAGED BY OR EASEMENTS GIVEN TO:

- FIND No.: MSA B-1
- US No.: 351
- Additional: N/A

ANIMAL SPECIES LOCATED:

Columbigallina passerina (Ground Dove)

Egretta caerulea (Little Blue Herons)

PLANT SPECIES:

Batis maritima (Saltwort)

Borrchia frutescens (Sea Daisy)

Cladium jamaicense (Sawgrass)

Distichlis spicata (Saltgrass)

Myrica cerifera (Wax Myrtle)

Pinus elliottii (Slash Pine)

Rhizophora mangle (Red Mangrove)

Schinus terebinthifolius (Brazilian Pepper Tree)

Spartina bakeri (Sand Cordgrass)

CURRENT STUCTURES OR FACILITIES ON ISLAND: None

ADDITIONAL INFORMATION: *Cladium jamaicense* (Sawgrass) clumps found on the southern end of island, *Spartina bakeri* (Sand Cordgrass) found in sections between spoil mounds. Moderate to light human usage.

ML/HC-HH75-2



0 250 500 1,000 Feet

3

ISLAND INDEX CODE: ML/HC-II76-1

COMMON NAME(S): N/A

ISLAND SIZE (sq ft/acres): 1461810/33.5

GPS LOCATION: 28.765078 N, 80.768891 W

ISLAND CLASSIFICATION (best use category): Conservation

OWNED BY: Canaveral National Seashore

MANAGED BY OR EASEMENTS GIVEN TO:

- FIND No.: MSA B-1
- US No.: 351
- Additional: N/A

ANIMAL SPECIES LOCATED:

Gopherus polyphemus (Gopher Tortoise)

PLANT SPECIES:

Andropogon virginicus (Broom Sedge)

Baccharis halimifolia (Saltbush)

Borrchia frutescens (Sea Daisy)

Juniperus silicicola (Southern Red Cedar)

Lantana camara (Lantana)

Myrica cerifera (Wax Myrtle)

Rhizophora mangle (Red Mangrove)

Sabal palmetto (Cabbage Palm)

Schinus terebinthifolius (Brazilian Pepper Tree)

CURRENT STRUCTURES OR FACILITIES ON ISLAND: None

ADDITIONAL INFORMATION: Island has four main spoil areas or patches: the third patch plant species include *Lantana camara* (Lantana), *Schinus terebinthifolius* (Brazilian Pepper Tree), *Baccharis hamifolia* (Saltbush). On the western side there are a lot of dead *Juniperus silicicola* (Southern Red Cedar) with *Schinus terebinthifolius* (Brazilian Pepper Tree) encroaching. Eastern side there is a huge *Schinus terebinthifolius* (Brazilian Pepper Tree) stand. Fourth patch has a gopher tortoise burrow.

ML/HC-II76-1



0 250 500 1,000 Feet



ISLAND INDEX CODE: ML/HC-LL76-1

COMMON NAME(S): N/A

ISLAND SIZE (sq ft/acres): 1783290/40.94

GPS LOCATION: 28.772060 N, 80.738997 W

ISLAND CLASSIFICATION (best use category): Conservation

OWNED BY: Canaveral National Seashore

MANAGED BY OR EASEMENTS GIVEN TO:

- FIND No.: MSA B-1
- US No.: 351
- Additional: N/A

ANIMAL SPECIES LOCATED: N/A

PLANT SPECIES: N/A


CURRENT STRUCTURES OR FACILITIES ON ISLAND: N/A

ADDITIONAL INFORMATION: N/A

ML/HC-LL76-1



0 250 500 1,000 Feet

A horizontal scale bar with tick marks at 0, 250, 500, and 1,000 feet.

3

ISLAND INDEX CODE: ML/HC-LL76-2

COMMON NAME(S): N/A

ISLAND SIZE (sq ft/acres): 601742/13.81

GPS LOCATION: 28.768750 N, 80.741685 W

ISLAND CLASSIFICATION (best use category): Conservation

OWNED BY: Canaveral National Seashore

MANAGED BY OR EASEMENTS GIVEN TO:

- FIND No.: MSA B-1
- US No.: 351
- Additional: N/A

ANIMAL SPECIES LOCATED: N/A

PLANT SPECIES: N/A

CURRENT STRUCTURES OR FACILITIES ON ISLAND: N/A

ADDITIONAL INFORMATION:

ML/HC-LL76-2



0 250 500 1,000 Feet

ISLAND INDEX CODE: ML/HC-II77-1

COMMON NAME(S): N/A

ISLAND SIZE (sq ft/acres): 164105/3.8

GPS LOCATION: 28.758921 N, 80.764617 W

ISLAND CLASSIFICATION (best use category): Conservation

OWNED BY: Canaveral National Seashore

MANAGED BY OR EASEMENTS GIVEN TO:

- FIND No.: MSA B-1
- US No.: 351
- Additional: N/A

ANIMAL SPECIES LOCATED: None

PLANT SPECIES:

Baccharis halimifolia (Saltbush)
Juniperus silicicola (Southern Red Cedar)
Lantana camara (Lantana)
Myrica cerifera (Wax Myrtle)
Opuntia humifusa (Prickly-pear Cactus)
Quercus myrtifolia (Myrtle oak)
Sabal palmetto (Cabbage Palm)
Schinus terebinthifolius (Brazilian Pepper Tree)
Serenoa repens (Saw Palmetto)

CURRENT STRUCTURES OR FACILITIES ON ISLAND: None

ADDITIONAL INFORMATION: Moderate *Schinus terebinthifolius* (Brazilian Pepper Tree) component, the dense wooded areas have a fairly open understory. North-western corner has a high sapling *Schinus terebinthifolius* (Brazilian Pepper Tree) population.

ML/HC-II77-1



3

ISLAND INDEX CODE: ML/HC-II77-2

COMMON NAME(S): N/A

ISLAND SIZE (sq ft/acres): 57872.2/1.3

GPS LOCATION: 28.756747 N, 80.764109 W

ISLAND CLASSIFICATION (best use category): Conservation

OWNED BY: Canaveral National Seashore

MANAGED BY OR EASEMENTS GIVEN TO:

- FIND No.: MSA B-1
- US No.: 351
- Additional: N/A

ANIMAL SPECIES LOCATED: None

PLANT SPECIES:

Batis maritima (Saltwort)

Borrchia frutescens (Sea Daisy)

Juniperus silicicola (Southern Red Cedar)

Rhizophora mangle (Red Mangrove)

Sabal palmetto (Cabbage Palm)

Schinus terebinthifolius (Brazilian Pepper Tree)

CURRENT STUCTURES OR FACILITIES ON ISLAND: None

ADDITIONAL INFORMATION: Long, narrow spoil island.

ML/HC-II77-2



0 250 500 Feet

ISLAND INDEX CODE: ML/HC-JJ77-1

COMMON NAME(S): N/A

ISLAND SIZE (sq ft/acres): 139684/3.2

GPS LOCATION: 28.756312 N, 80.763065 W

ISLAND CLASSIFICATION (best use category): Conservation

OWNED BY: Canaveral National Seashore

MANAGED BY OR EASEMENTS GIVEN TO:

- FIND No.: MSA B-1
- US No.: 351
- Additional: N/A

ANIMAL SPECIES LOCATED: None

PLANT SPECIES:

Juniperus silicicola (Southern Red Cedar)

Opuntia humifusa (Prickly-pear Cactus)

Quercus myrtifolia (Myrtle Oak)

Sabal palmetto (Cabbage Palm)

Schinus terebinthifolius (Brazilian Pepper Tree)

CURRENT STRUCTURES OR FACILITIES ON ISLAND: None

ADDITIONAL INFORMATION: The *Opuntia humifusa* (Prickly-pear Cactus) has a white silky growth upon its stems. Island could be accessible by a boat ramp.

ML/HC-JJ77-1



0 250 500 Feet

3

ISLAND INDEX CODE: ML/HC-JJ78-1

COMMON NAME(S): N/A

ISLAND SIZE (sq ft/acres): 581157/13.3

GPS LOCATION: 28.75345° N, 80.76043° W

ISLAND CLASSIFICATION (best use category): Conservation

OWNED BY: Canaveral National Seashore

MANAGED BY OR EASEMENTS GIVEN TO:

- FIND No.: MSA B-1
- US No.: 351
- Additional: N/A

ANIMAL SPECIES LOCATED:

Chordeiles minor (Common Nighthawk)

PLANT SPECIES:

Andropogon virginicus (Broom Sedge)

Avicennia germinans (Black Mangrove)

Baccharis halimifolia (Saltbush)

Batis maritima (Saltwort)

Iva frutescens (Marsh Elder)

Juniperus silicicola (Southern Red Cedar)

Lantana camara (Lantana)

Opuntia humifusa (Prickly-pear Cactus)

Paederia foetida (Skunk Daisy)

Quercus myrtifolia (Myrtle oak)

Sabal palmetto (Cabbage Palm)

Schinus terebinthifolius (Brazilian Pepper Tree)

Spartina bakeri (Sand Cordgrass)

CURRENT STRUCTURES OR FACILITIES ON ISLAND: None

ADDITIONAL INFORMATION: Based on island classification (best use strategy) additional survey may be required.

ML/HC-JJ78-1



3

ISLAND INDEX CODE: ML/HC-JJ78-2

COMMON NAME(S): Pea Island

ISLAND SIZE (sq ft/acres): 11992.6/.3

GPS LOCATION: 28.751322° N, 80.757772° W

ISLAND CLASSIFICATION (best use category): Conservation

OWNED BY: Canaveral National Seashore

MANAGED BY OR EASEMENTS GIVEN TO:

- FIND No.: MSA B-1
- US No.: 351
- Additonal: N/A

ANIMAL SPECIES LOCATED: None

PLANT SPECIES:

Batis maritima (Saltwort)

Borrchia frutescens (Sea Daisy)

Rhizophora mangle (Red Mangrove)

CURRENT STUCTURES OR FACILITIES ON ISLAND: None

ADDITIONAL INFORMATION: Based on island classification (best use strategy) additional survey may be required.

ML/HC-JJ78-2



0 250 500 Feet

3

ISLAND INDEX CODE: ML/HC-JJ78-3

COMMON NAME(S): N/A

ISLAND SIZE (sq ft/acres): 201071/4.6

GPS LOCATION: 28.750077 N, 80.757212 W

ISLAND CLASSIFICATION (best use category): Conservation

OWNED BY: Canaveral National Seashore

MANAGED BY OR EASEMENTS GIVEN TO:

- FIND No.: MSA B-1
- US No.: 351
- Additional: N/A

ANIMAL SPECIES LOCATED: None

PLANT SPECIES:

Andropogon virginicus (Broom Sedge)

Baccharis halimifolia (Saltbush)

Ipomopsis rubra (Standing Cypress)

Juniperus silicicola (Southern Red Cedar)

Opuntia humifusa (Prickly-pear Cactus)

Paederia foetida (Skunk Daisy)

Persea borbonia (Red Bay)

Sabal palmetto (Cabbage Palm)

Schinus terebinthifolius (Brazilian Pepper Tree)

CURRENT STRUCTURES OR FACILITIES ON ISLAND: None

ADDITIONAL INFORMATION: Based on island classification (best use strategy) additional survey may be required.

ML/HC-JJ78-3



3

ISLAND INDEX CODE: ML/HC-JJ78-4

COMMON NAME(S): N/A

ISLAND SIZE (sq ft/acres): 28649/.7

GPS LOCATION: 28.752913 N, 80.759501 W

ISLAND CLASSIFICATION (best use category): Conservation

OWNED BY: Canaveral National Seashore

MANAGED BY OR EASEMENTS GIVEN TO:

- FIND No.: MSA B-1
- US No.: 351
- Additional: N/A

ANIMAL SPECIES LOCATED: None

PLANT SPECIES:

Avicennia germinans (Black Mangrove)

Laguncularia racemosa (White Mangrove)

Sabal palmetto (Cabbage Palm)

Schinus terebinthifolius (Brazilian Pepper Tree)

Spartina bakeri (Sand Cordgrass)

CURRENT STRUCTURES OR FACILITIES ON ISLAND: None

ADDITIONAL INFORMATION: Based on island classification (best use strategy) additional survey may be required.

ML/HC-JJ78-4



0 250 500 Feet

3

ISLAND INDEX CODE: ML/HC-JJ78-5

COMMON NAME(S): N/A

ISLAND SIZE (sq ft/acres): 622089/14.3

GPS LOCATION: 28.74755° N, 80.75429° W

ISLAND CLASSIFICATION (best use category): Conservation

OWNED BY: Canaveral National Seashore

MANAGED BY OR EASEMENTS GIVEN TO:

- FIND No.: MSA B-1
- US No.: 351
- Additional: N/A

ANIMAL SPECIES LOCATED:

Chordeiles minor (Common Nighthawk)

PLANT SPECIES:

Andropogon virginicus (Broom Sedge)

Juniperus silicicola (Southern Red Cedar)

Lantana camara (Lantana)

Myrica cerifera (Wax Myrtle)

Paederia foetida (Skunk Daisy)

Quercus geminata (Shrub Oak)

Quercus myrtifolia (Myrtle Oak)

Sabal palmetto (Cabbage Palm)

Schinus terebinthifolius (Brazilian Pepper Tree)

Stenotaphrum secundatum (St. Augustine Grass)

CURRENT STRUCTURES OR FACILITIES ON ISLAND: None

ADDITIONAL INFORMATION: Based on island classification (best use strategy) additional survey may be required.

ML/HC-JJ78-5



0 250 500 Feet

3

ISLAND INDEX CODE: ML/HC-KK79-1

COMMON NAME(S): N/A

ISLAND SIZE (sq ft/acres): 34962.8/.8

GPS LOCATION: 28.745386 N, 80.750404 W

ISLAND CLASSIFICATION (best use category): Conservation

OWNED BY: Canaveral National Seashore

MANAGED BY OR EASEMENTS GIVEN TO:

- FIND No.: MSA B-1
- US No.: 351
- Additional: N/A

ANIMAL SPECIES LOCATED: None

PLANT SPECIES:

Juniperus silicicola (Southern Red Cedar)

Sabal palmetto (Cabbage Palm)

Schinus terebinthifolius (Brazilian Pepper Tree)

CURRENT STRUCTURES OR FACILITIES ON ISLAND: None

ADDITIONAL INFORMATION: High concentrations of *Juniperus silicicola* (Southern Red Cedar).

ML/HC-KK79-1



0 250 500 Feet

ISLAND INDEX CODE: ML/HC-KK79-2

COMMON NAME(S): N/A

ISLAND SIZE (sq ft/acres): 719686/16.5

GPS LOCATION: 28.743491 N, 80.74693 W

ISLAND CLASSIFICATION (best use category): Conservation

OWNED BY: Canaveral National Seashore

MANAGED BY OR EASEMENTS GIVEN TO:

- FIND No.: MSA B-1
- US No.: 351
- Additional: N/A

ANIMAL SPECIES LOCATED:

Gopherus polyphemus (Gopher Tortoise)

PLANT SPECIES:

Andropogon virginicus (Broom Sedge)

Casuarina equisetifolia (Australian Pine)

Juniperus silicicola (Southern Red Cedar)

Lantana camara (Lantana)

Sabal palmetto (Cabbage Palm)

Schinus terebinthifolius (Brazilian Pepper Tree)

CURRENT STRUCTURES OR FACILITIES ON ISLAND: None

ADDITIONAL INFORMATION: *Casuarina equisetifolia* (Australian Pine) stand on southern tip of island, eastern edge is *Sabal palmetto* (Cabbage Palm) hammock with very little groundcover. Gopher Tortoise Burrows:

28.74418 N, 80.74952 W;

28.74370 N, 80.74927 W;

28.74353 N, 80.74960 W;

28.74331 N, 80.74972 W;

28.74345 N, 80.75020 W;

28.74381 N, 80.75022 W

ML/HC-KK79-2



0 250 500 Feet