

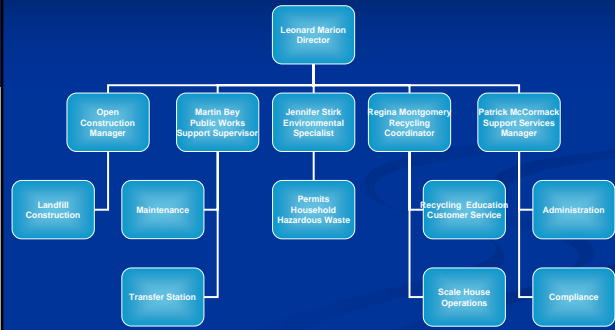
VOLUSIA COUNTY
PUBLIC WORKS DEPARTMENT
SOLID WASTE DIVISION

Leonard Marion, Director



1

**Solid Waste Division
Organizational Chart**



Employees: 74 2

Solid Waste Division

Provide efficient solid waste collection, reduction and disposal services.

- 74 full time employees
- Class I & III Disposal Cells
 - 1,500 tons per day
- Woody Waste Reuse/Recycling
 - 100 tons per day
- Materials Recycling Facility
 - 30% recycling rate
- Household Hazardous Waste
- White Goods/Tire Processing
- Methane Recovery Plant
 - Energy for 3,800 homes
- Sludge Processing Plant
- 120 Acre Industrial Park



3

**Tomoka
Landfill
Capacity**

- Developing ten year facilities master site plan



Solid Waste Fee Schedule

Assessment for Waste Collection \$132.00/year
(effective 10/01/2004)

Residential Vehicles

Cars \$4.00/each
Pick-ups, Vans & Trailers \$8.00/each

Vehicles over 2.5 cu yd capacity to be charged by weight

Commercial Vehicles

Class I - Household waste \$34.00/ton
Class III - Construction & demolition waste \$28.00/ton
Yard Trash & Land Clearing \$23.00/ton
Clean Debris - Recycling \$13.00/ton
Tires (vehicle) \$100.00/ton
Asbestos \$200.00/ton
Special Waste Minimum twice waste class rate

Note: Out of county mixed loads, loads received after or before normal operation hours and unsecured loads shall be charged double the established rates.

5

Class I Disposal Cell

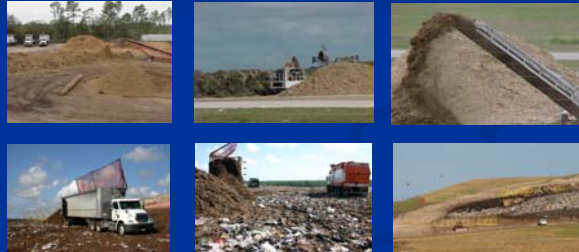


- 22 acres for future expansion
- Cost = \$350,000 / acre
- Constructed with materials to prevent groundwater leaching
- Materials collect leachate to protect the health and well being of the environment

6

Woody Waste Recycling

Solid Waste Division recycles and/or reuses yard waste, land clearing debris and clean wood into mulch at the Tomoka Landfill and the West Volusia Transfer Station. Last year we recycled over **146,000** tons of woody waste into mulch.



Volusia County Solid Waste offers free mulch to Volusia County residents year-round while available.

7

Regional Recycling Facility

- 40,000 square foot regional recyclable material processing facility opened in June 2000.
- Operated by G.E.L. Corp.
- All unincorporated recyclable material is processed through this facility
- Commercial paper line added in 2005 - increased recycling



Fiber Line



Co-mingled Line

8

Special Wastes

Appliances/White Goods

Banned by the State from landfill disposal as of January 1, 1990. If you live in unincorporated Volusia County, please call your hauler to schedule a pick-up.



Tires

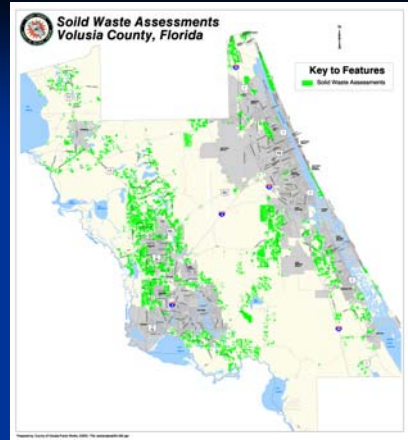
Banned from being buried in the landfill by the State as of July 1, 1989. Residents may take up to four typical automobile size tires to the Tomoka Landfill in Daytona Beach or the West Volusia Transfer Station in DeLand free of charge on weekends only. Any tire may be disposed of at either waste facility during weekdays for a minimal charge.



9

Unincorporated Volusia County

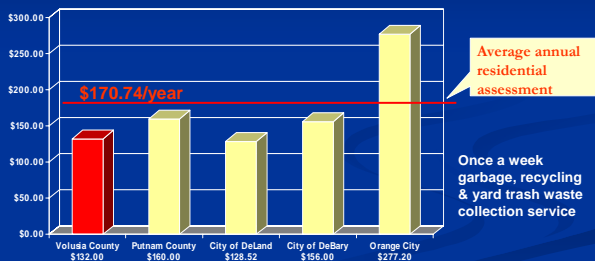
- 10% of Customers
- Vast Service Area
- Goal is to provide equitable service countywide



10

ANNUAL SOLID WASTE ASSESSMENT COMPARISON

SURROUNDING COUNTIES



11

Residential Curbside Collection Services

- Household Waste
- Recycling
- Yard Waste



12

Waste Not Accepted For Curbside Collection

Construction / Demolition Debris

Dispose of at the Tomoka Landfill or Transfer Station



Used Motor Oil

Please Recycle at Many County Fire Station Locations



Lead Acid Batteries

Please dispose at the Household Hazardous Waste Facility at the Tomoka Landfill and Transfer Station



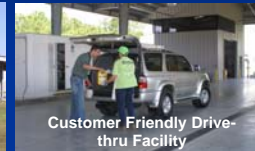
13

Environmental Resources

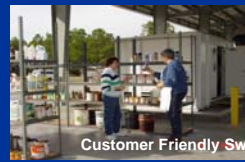
Household Hazardous Waste Facility



Drive-thru Facility
Improves Safety & Efficiency



Customer Friendly Drive-thru Facility



Customer Friendly Swap Shop, Recycle & Save



14

Environmental Partnerships

Methane Collection System

Methane is collected from the closed Class I Landfill and directed to a co-generation plant and converted into electricity, lighting 3,800 houses.



Sludge Processing Facility

Operated by N - Viro Corporation

28,700 tons of Waste Water Sludge processed annually



Monitoring Wells & Stormwater Systems

Detect and correct any environmental water impacts from disposal and recycling operations.



15

Solid Waste Division

Current Issues

- The management and control of leachate and landfill gas at the Tomoka Landfill to accommodate future expansions.
- Continue to expand and create recycling and diversion opportunities for special wastes.

16

QUESTIONS?

17