

# County Council Meeting

## WESTSIDE PARKWAY Alignment Study

(Donald E. Smith Boulevard to French Avenue)

Presented by:  
Volusia County  
March 16, 2006



# Presentation Overview

- Project Description
- Need for the Project
- Transportation “Big Picture”
- Stakeholders
- Typical Section(s) / ROW Requirements
- Alternative Alignments  
(south, middle, north)
- Alignment Evaluation
- Public Involvement
- Schedule
- Recommended Alignment



# Project Description / Limits

- Westside Parkway
- Don Smith Boulevard to French Avenue

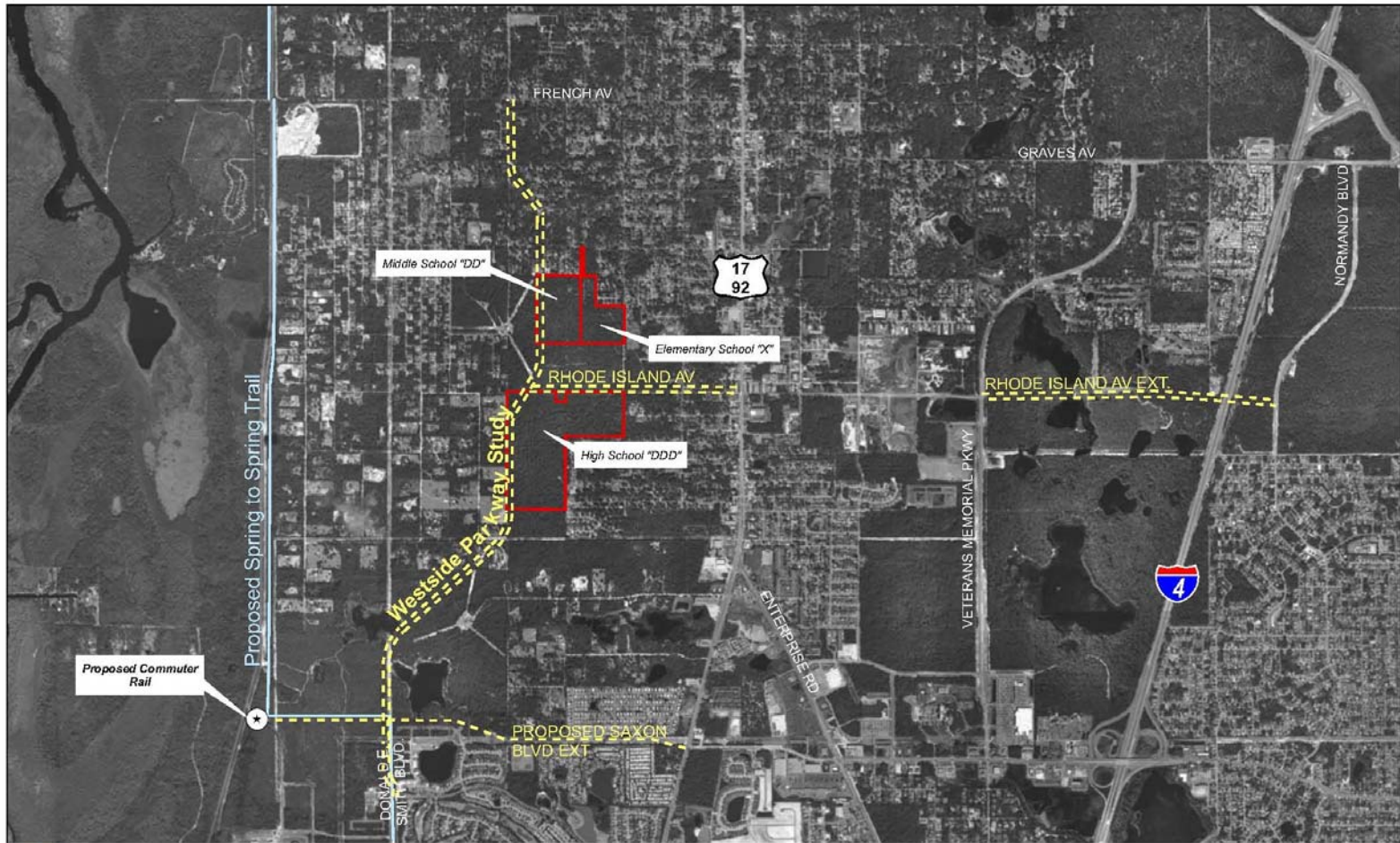



# Why Construct The Westside Parkway ?

- Relieve traffic from US 17-92
- Improve transportation connectivity
- Provide access to new schools



# The Transportation "Big Picture"



 Date: 08/09/05  
Revised: 01/20/06  
Map is graphic representation only

TRANSPORTATION "BIG PICTURE"

EXHIBIT A



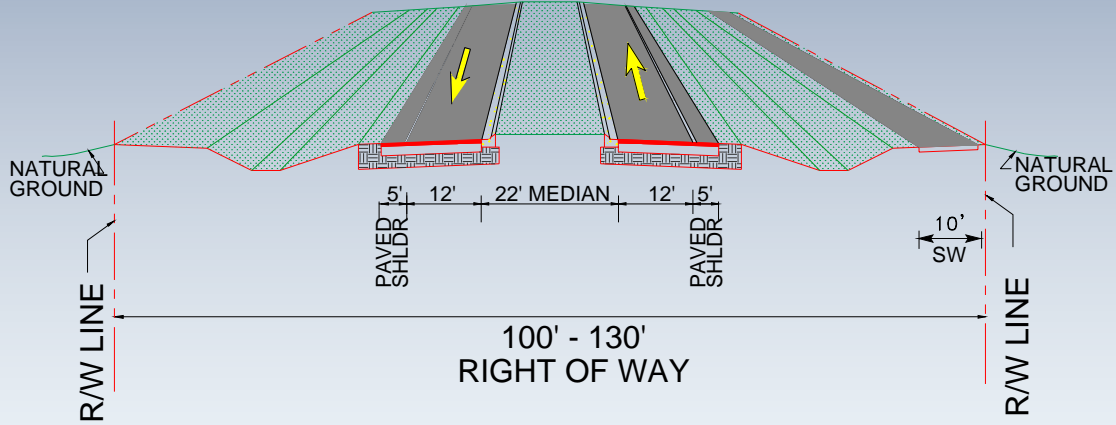
# Stakeholders

- Volusia County School Board
- Orange City
- City of DeBary
- Area Developer
- Area Residents



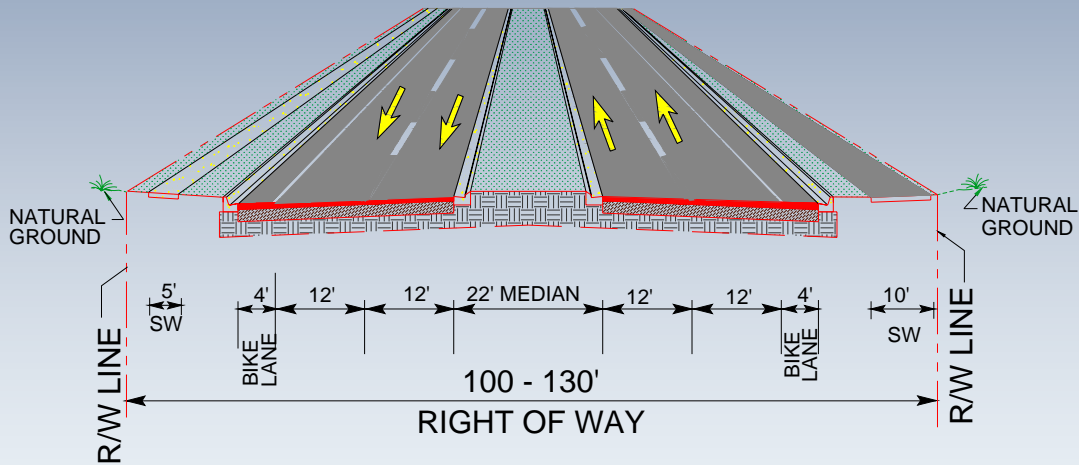
TYPICAL SECTION

WESTSIDE PARKWAY  
TWO LANE (INITIAL) RURAL BOULEVARD



DESIGN SPEED = 45 M.P.H.

TYPICAL SECTION  
WESTSIDE PARKWAY  
FOUR LANE URBAN BOULEVARD



DESIGN SPEED = 45 M.P.H.

# Westside Parkway Alignment Study Location Map

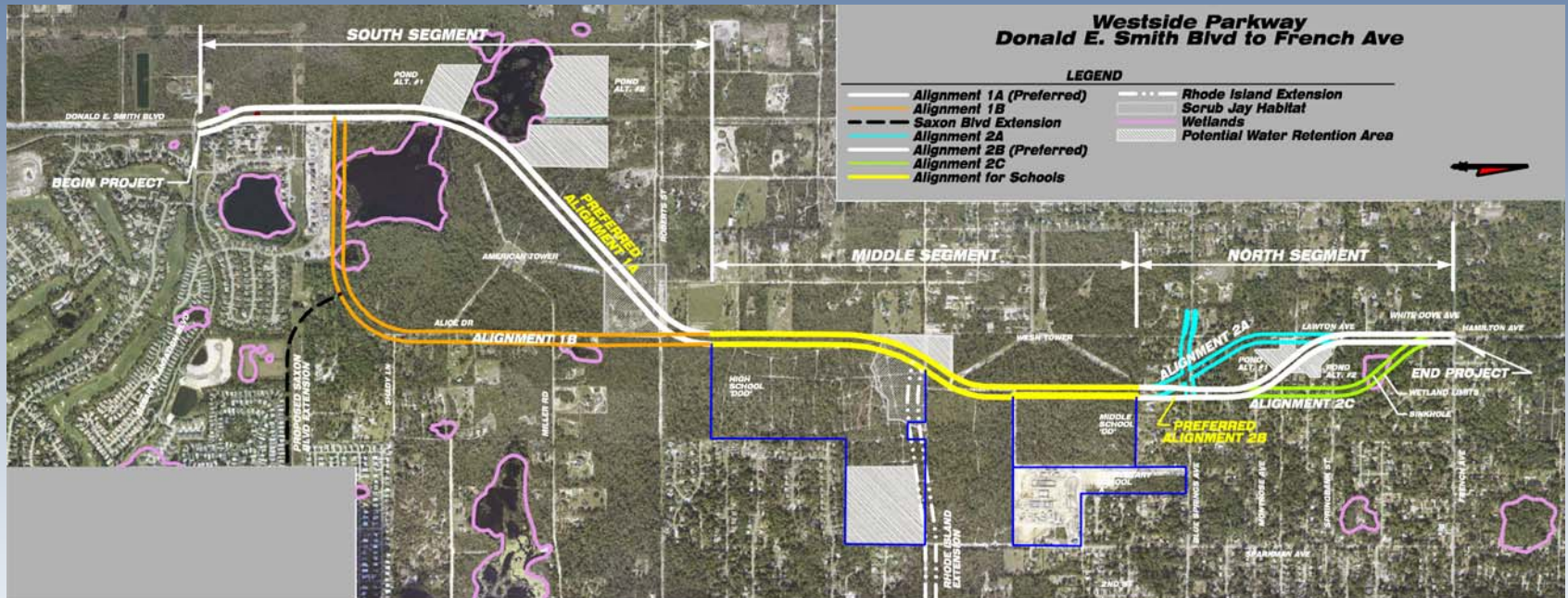


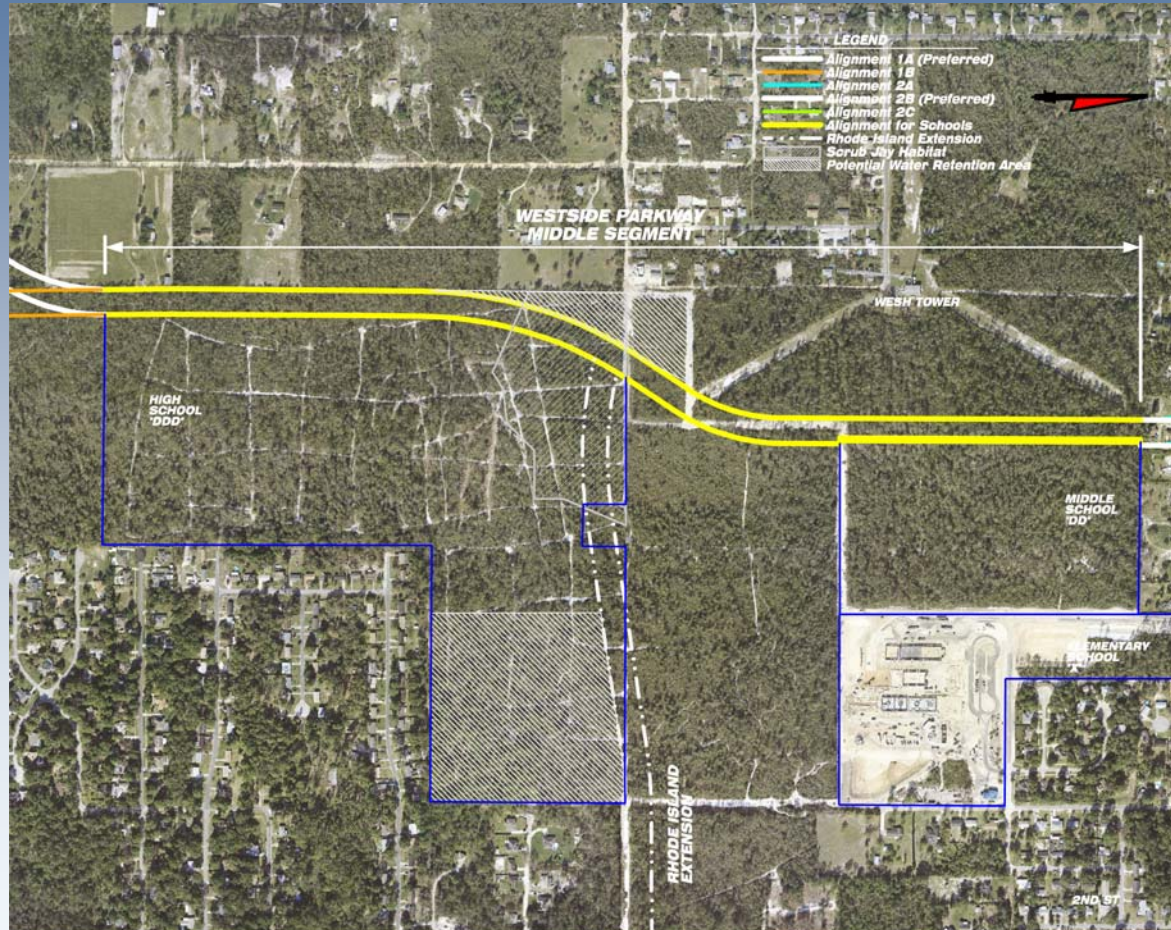
EXHIBIT B

# Preferred Alignment South Segment

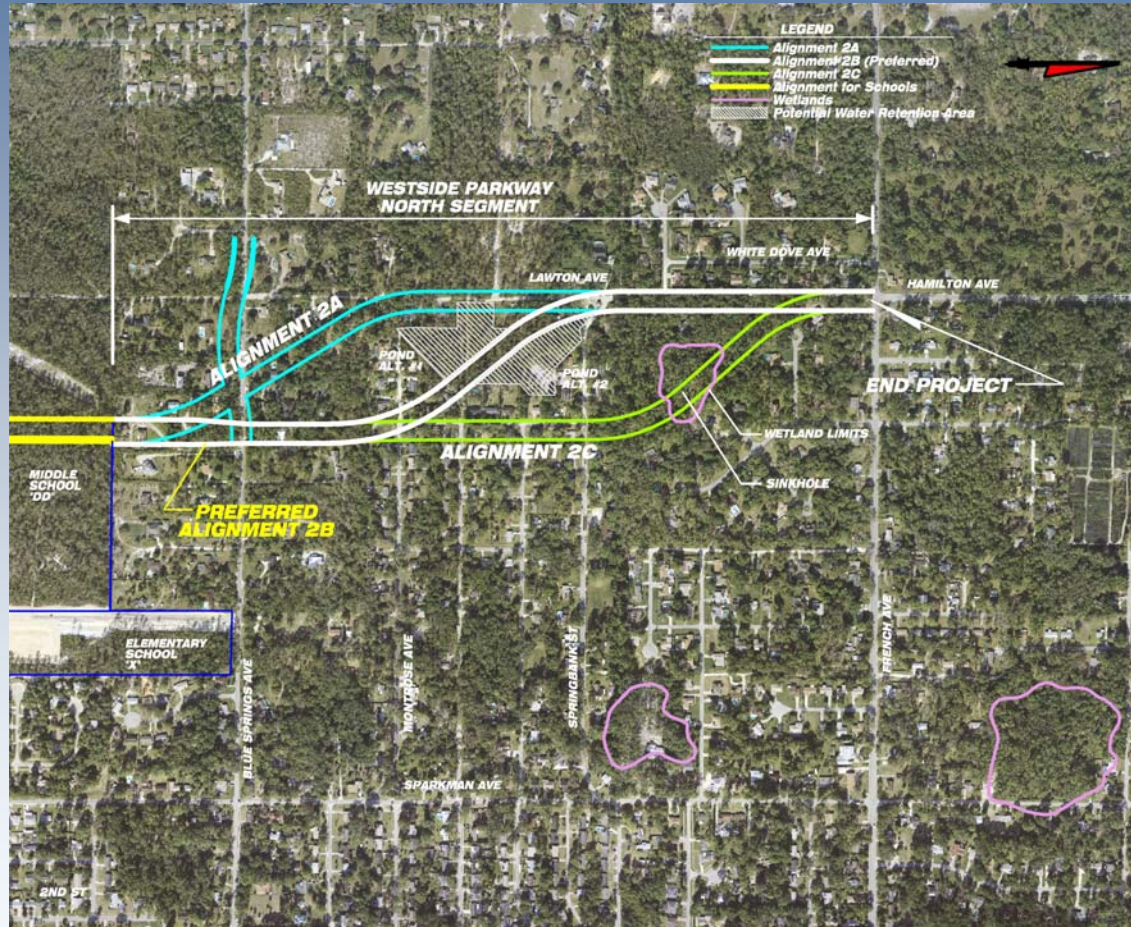


EXHIBIT C

# Preferred Alignment Middle Segment



# Preferred Alignment North Segment



# Alignment Evaluation

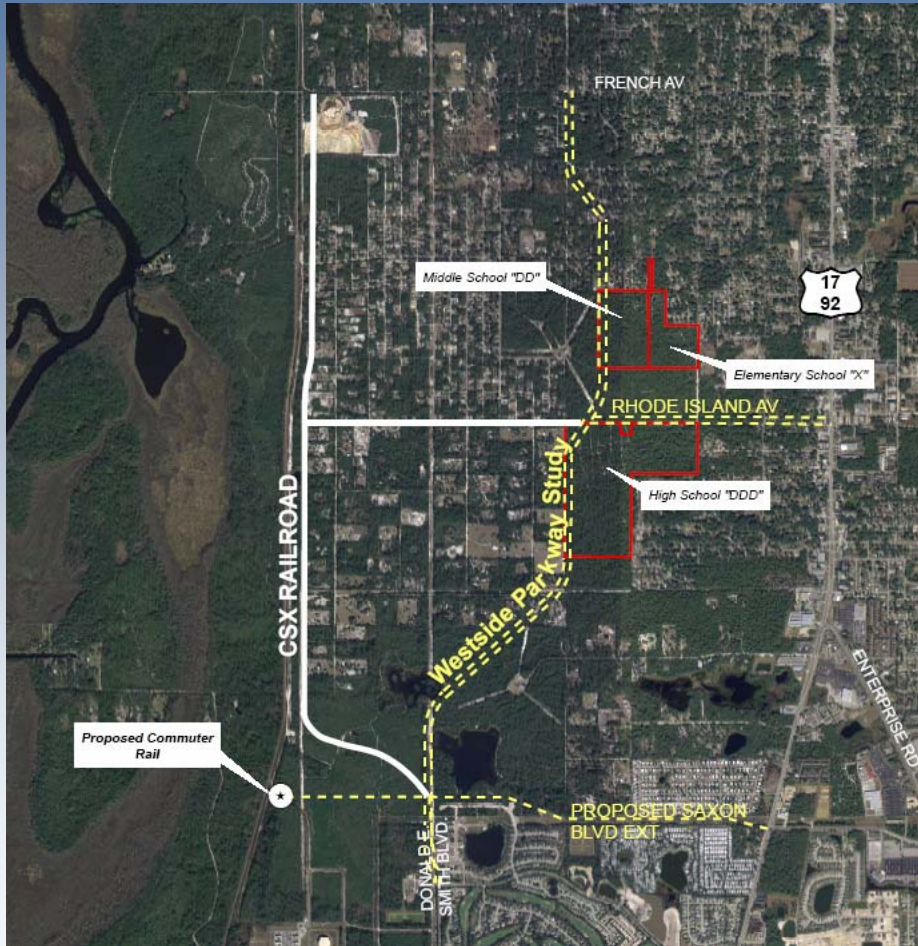
	South Alignment		Middle Alignment	North Alignment		
Evaluation Criteria	Align. 1A	Align. 1B	Align. School	Align. 2A	Align. 2B	Align. 2C
<b>SOCIAL &amp; COMMUNITY IMPACTS</b>						
No. Parcels Affected	7	13	1	34	24	18
No. Improved Parcels to be Acquired	1	3	0	13	8	10
<b>NATURAL ENVIRONMENT &amp; PHYSICAL IMPACTS</b>						
Scrub Jay Habitat Impacted (acres)	1.5	1.0	1.9	0	0	0
Wetland Area Impacted (acres)	0	1.5	0	0	0	0.9
Floodplain Encroachment (acres)	2.3	1.8	0	0	0	0
Cost for Impacts/Encroachment	\$456,000	\$459,000	\$0	\$0	\$0	\$73,800
<b>RIGHT OF WAY IMPACTS</b>						
Alignment Lengths (Miles)	1.4	1.7	1.0	1.0	0.8	0.8
Additional Road Right of Way (acres)	22.2	24.7	8.1	8.1	7.1	7.7
Additional Stormwater Area (acres)	6.0	7.0	1.2	1.5	1.4	1.4
Total Additional ROW Required	28.2	31.7	9.3	9.6	8.5	9.1
<b>PROJECT COSTS</b>						
Right of Way Acquisition Costs	\$2,324,000	\$3,769,000	\$223,000	\$2,728,000	\$1,729,000	\$2,136,000
Preliminary Construction Costs	\$4,200,000	\$5,040,000	\$3,000,000	\$3,000,000	\$2,252,000	\$2,665,000
Construction Inspection and Testing	\$336,000	\$403,000	\$240,000	\$240,000	\$180,000	\$213,000
<b>Total Segment Costs</b>	<b>\$7,316,000</b>	<b>\$9,671,000</b>	<b>\$3,463,000</b>	<b>\$5,968,000</b>	<b>\$4,161,000</b>	<b>\$5,088,000</b>

# Public Information Meetings

- First Public Meeting (150 participants)
- Second Public Meeting (250 participants)
- Issues
  - DeBary Plantation / Alice Dr. concerns
  - Roberts Road connection
  - Adeline Street connection
  - North segment concerns
  - Railroad alignment option



# Railroad Alignment Option



- 92 Parcels Affected (50% more than other alignments)
- Rhode Island will need to be extended 1 mile
  - 36 Parcels affected
  - 15 Homes impacted
- No direct school access
- Less relief for US 17/92

# Westside Parkway Project Schedule

## Donald Smith Blvd to Rhode Island Ext.

Year	2005	2006	2007	2008	2009	2010
Study and Engineering	■					
Permitting		■				
Right of Way					■	
Construction						■

- Elem. School Opening 2006
- Middle School Opening 2008
- High School Opening 2008



# Westside Parkway Project Schedule

## Rhode Island Ext. to French Avenue

Year	2005	2006	2007	2008	2009	2010
Study	■					
Design / Permitting				Unfunded		
Right of Way				Unfunded		
Construction				Unfunded		

# Westside Parkway Alignment Study

## Preferred Alignment (1A, School Alignment, 2B)

