

Capital Improvement Projects

INFRASTRUCTURE PLAN FOR CORE SERVICES DELIVERY

(10 yr implementation w/service life of 50 to 100 yrs)

- 1. New Sheriff's Evidence Storage Bldg & Forensics Lab**
- 2. New Consolidated Public Works Service Center**
- 3. New Elections Warehouse**
- 4. City Island Courthouse Improvements**
- 5. New Medical Examiner Facility**
- 6. New Emergency Medical Services Facility (EVAC)**
- 7. New Sheriff's District 2 Services Office**
- 8. New Court Records & Central Services Warehouse**

Capital Improvement Projects

EXISTING SHERIFF'S EVIDENCE STORAGE BUILDING

- **Dilapidated bldg conditions**
 - SR 44 west of DeLand...built 1938
 - Former inmate housing (16,620 SF)
 - Roof leaks, flooding, in floodplain
 - Inadequate climate control
 - Doesn't meet bldg code
- **Volume greatly exceeds capacity**
 - Processes over 200k items of evidence/yr
 - Inventory increased 500% since 2000
 - ½ acre of overflow shipping containers
- **Need for more centralized location**
 - Supports other law enforcement agencies incl municipalities.



Capital Improvement Projects

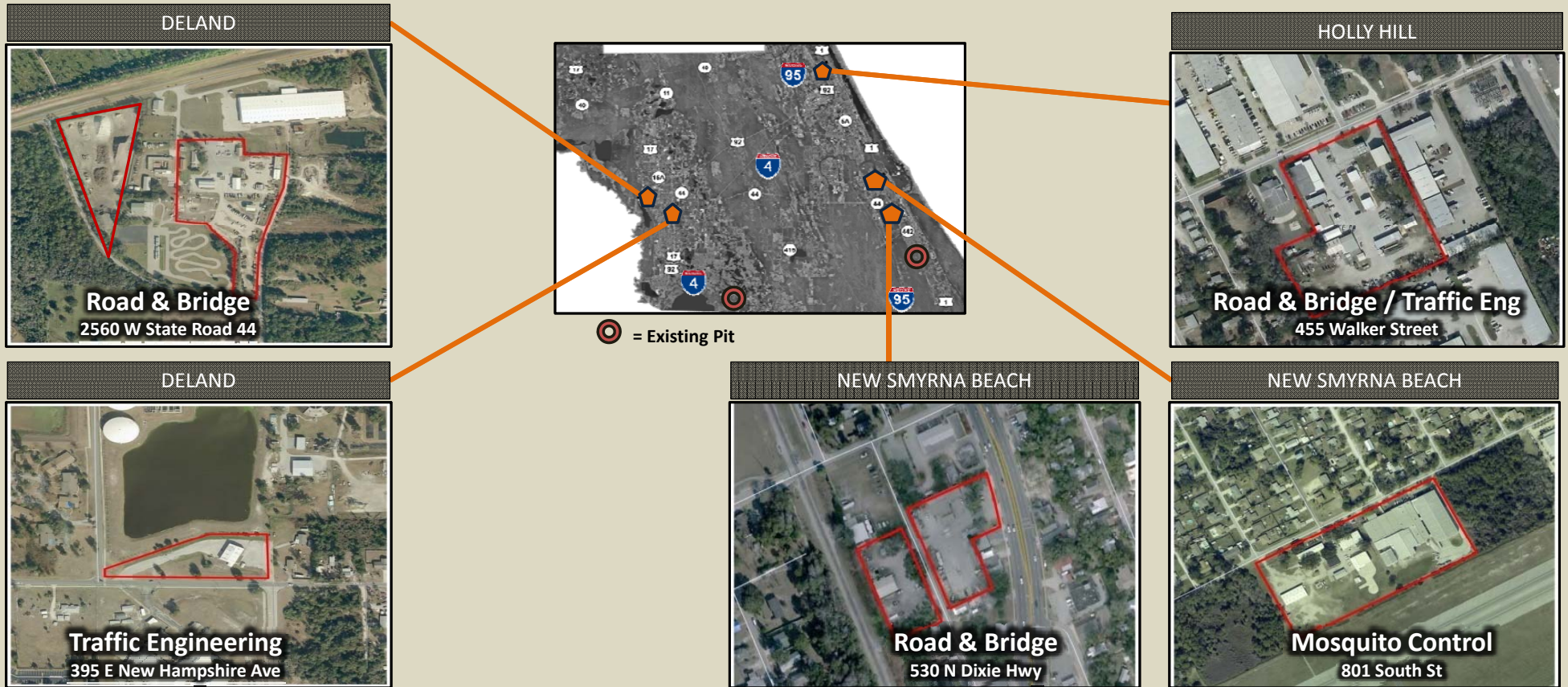
NEW EVIDENCE STORAGE BLDG & FORENSICS LAB

Proposed Facility

- Construct new bldg at other property
- Includes secure evidence storage
- Includes forensics lab
(FDLE discontinued providing service to Volusia Co)
- Integrated security system, bldg automation & climate control
- Property for vehicle storage
- Hurricane hardened bldg
- Outside flood zones & storm surge areas
- Secure compound
- Greater efficiency of staff & resource management
- Supports future growth

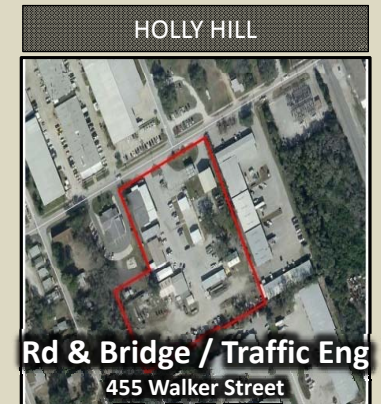
Capital Improvement Projects

EXISTING PUBLIC WORKS SERVICE FACILITIES



Capital Improvement Projects

EXISTING PUBLIC WORKS SERVICE FACILITIES



- Dilapidated bldg conditions
- Don't meet bldg codes
- Inadequate covered storage
- Forced to use modular units at New Smyrna Bch & Holly Hill
- Not storm hardened for 1st responders
- Located in floodplain & storm surge areas
- Constrained accessibility

Capital Improvement Projects

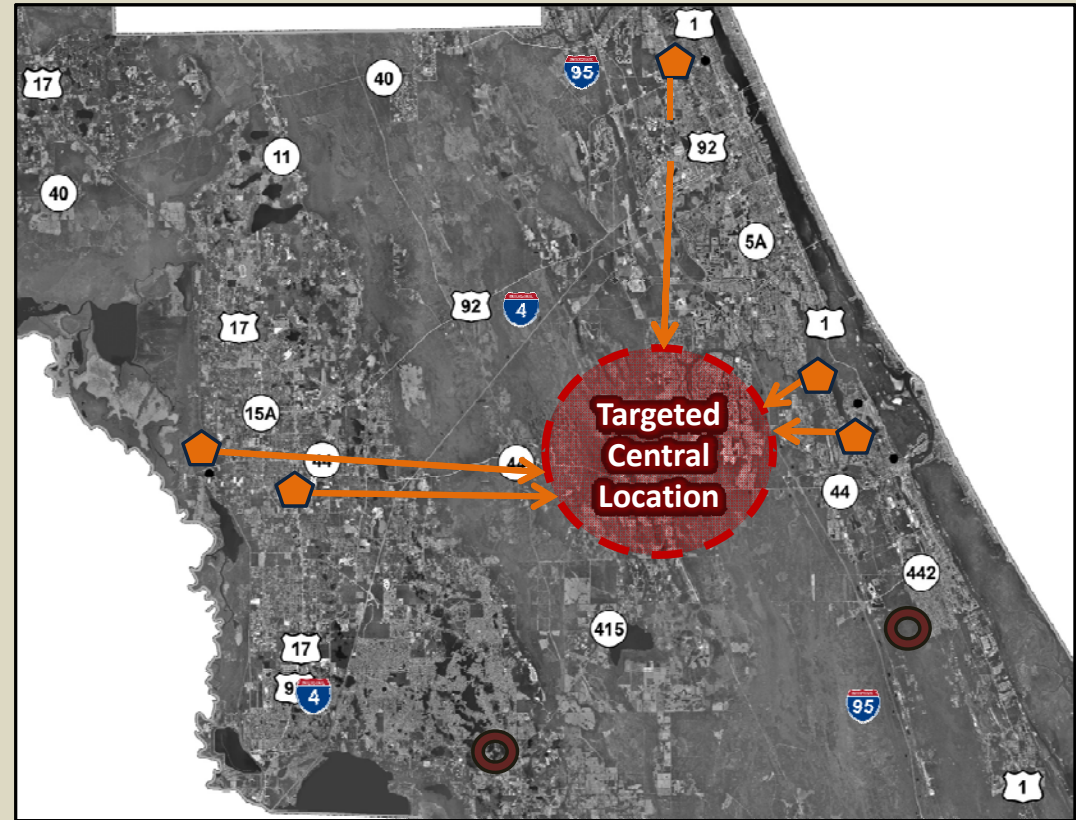
EXISTING PUBLIC WORKS SERVICE FACILITIES



Capital Improvement Projects

NEW CONSOLIDATED PUBLIC WORKS SERVICE FACILITY

- Proposed consolidated facility
- Construct new facility at targeted central location
- Adjacent to major roadways
- Hurricane hardened bldg
- Outside of flood zones & storm surge areas
- Greater efficiency of staff & resource management
- Accommodates future expansion



 Existing site or pit to remain

Capital Improvement Projects

EXISTING ELECTIONS WAREHOUSE

- **Existing building**
 - SR 44 west of DeLand (9,000 SF)
 - Logistics center for voting equip/ mat'ls/ records
 - Staging and work areas
 - Critical testing of electronic voting equip
 - Secure storage
 - Voting booths
 - BOD (ballots on demand) printers
 - EVIDS (electronic voting identification units)
 - Long term archives
- **Needs exceed existing bldg capacity**
 - Overhead storage...safety concern
 - Staging /work areas overrun by storage
- **Located on flood prone site**



Capital Improvement Projects

NEW ELECTIONS WAREHOUSE

Proposed Facility

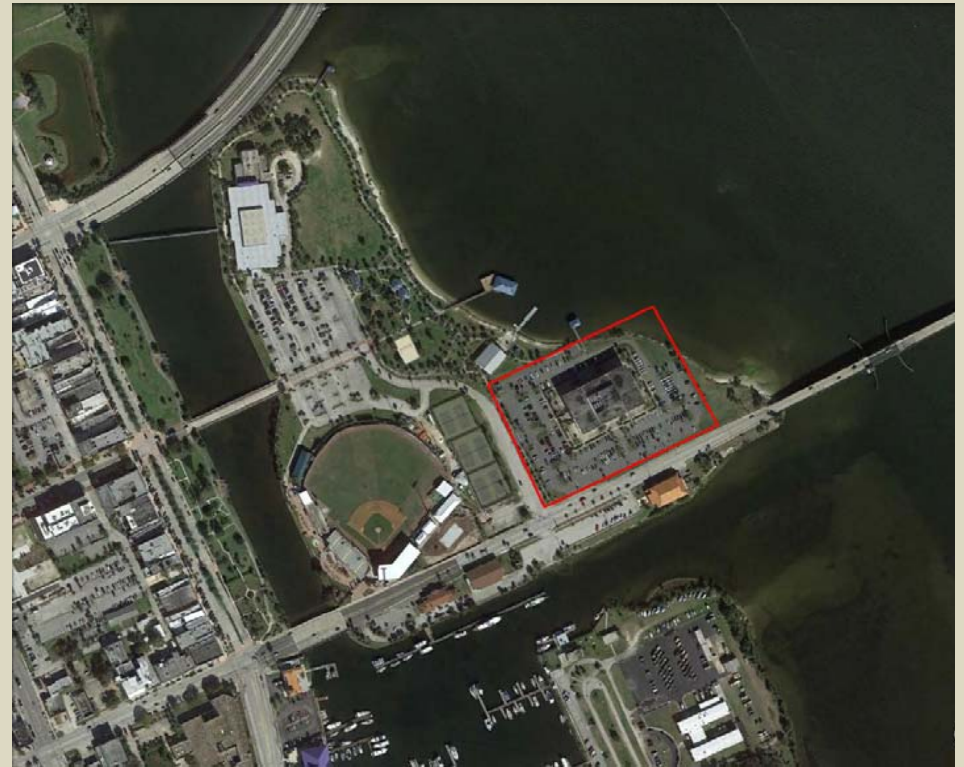
- Construct new building at other property
- Building design streamlines staging, testing & logistics
- Integrated security system, bldg automation & climate control for electronic voting equip & archives
- Improved records storage system for enhanced response to public records requests
- Outside flood zones & storm surge areas
- Accommodates future growth
(additional demands of more early voting sites)

Capital Improvement Projects

CITY ISLAND COURTHOUSE IMPROVEMENTS

Concerns with Existing Facility

- **Safety/Security issues interior & exterior**
- **Acoustical & configuration of courtrooms**
- **ADA accessibility needs**
- **Emergency backup power**



Capital Improvement Projects

EXISTING MEDICAL EXAMINER FACILITY

- **Existing bldg**
 - Indian Lake Road, Daytona Bch
 - Built 1996 (8,686 SF)
 - Serves Volusia & Seminole Counties (932, 920 pop)
 - 7,076/yr...cremation authorized
 - 620/yr...autopsies
 - 919/yr...deaths certified
- **Volume greatly exceeds capacity**
 - Inadequate morgue, autopsy & laboratory space



Capital Improvement Projects

NEW MEDICAL EXAMINER FACILITY

Proposed Facility

- Construct new bldg at other property
- Cost share by Seminole County
- Hurricane hardened building
- Synergy of shared resources
- Accommodates future growth
- Includes autopsy suite, laboratory, admin, morgue, decomp morgue, evidence, records
- Separate public, staff & law enforcement areas
- Designed to add mobile coolers for disaster event

Capital Improvement Projects

EXISTING EMERGENCY MEDICAL SERVICES FACILITIES (EVAC)

- **Existing facilities**
 - 112 Carswell Ave and 135 Carswell Ave, Holly Hill (27,595 TSF)
 - County-wide provider since 1981 of pre-hospital care and medical transport
 - EVAC ambulances serve 1,207 miles of Volusia County and its 16 municipalities
- **Seasonal flooding of Carswell Ave, Mason Ave and existing site**
- **Need for more centralized location**



Capital Improvement Projects

NEW EMERGENCY MEDICAL SERVICES FACILITY (EVAC)

Proposed Facility

- Construct new bldg at other site
- Includes admin, logistics, fleet
- Hurricane hardened bldg
- Adjacent to major roadways
- Outside of flood zones & storm surge areas
- Greater efficiency of staff & resource management
- Supports future growth

Capital Improvement Projects

SHERIFF'S District 2 SERVICES OFFICE

Existing Facility

- 2007 tornado destroyed District 2 office
- Relocated to rental space in Victoria Plaza
- Law enforcement office not compatible with surrounding retail shops

Proposed Facility

- Relocate to rental new existing space or construct new bldg
- Location appropriate for law enforcement activities



Capital Improvement Projects

EXISTING COURT RECORDS/CENTRAL SERVICES WAREHOUSE

- **Existing buildings**

- Secure storage for court records (8250 sq ft air conditioned)
- County Central Services storage (5,500 sq ft non-air conditioned)
- Bldgs constructed in 1950,1960 & 1970

- **Property location/size/visual appeal**

- Located at intersection of Clyde Morris Blvd & Bellevue Ave
- 4.8 acres with driveway access to Bellevue Ave
- Property at major intersection with prime redevelopment potential
- Visual eyesore



Capital Improvement Projects

NEW COURT RECORDS/CENTRAL SERVICES WAREHOUSE

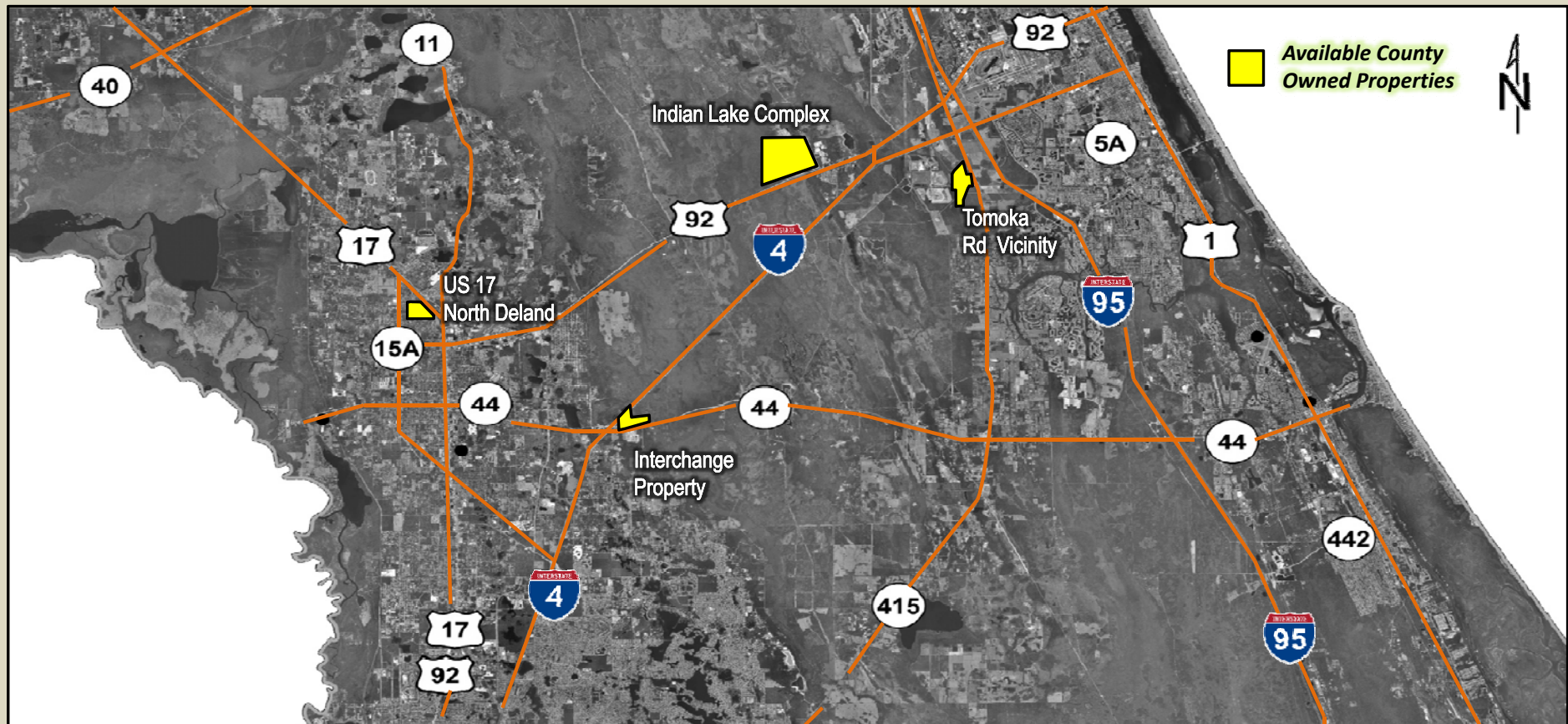
Proposed Facility

- Construct new building at other property
- Integrated security system, bldg automation & climate control for court records
- Non-air conditioned for Central Services/Facilities Maintenance needs
- Could be integrated with other warehouse project (s)
- Allows repurposing of existing property to highest & best use



Capital Improvement Projects

CAPITAL PROJECTS POTENTIAL SITES



Capital Improvement Projects

Proposed Capital Projects (10 yr implementation)

	<u>General Fund</u>	<u>Local Option Gas Tax</u>	<u>E. Volusia Mosquito Control</u>	<u>Storm Water Assess</u>	<u>Municipal Service District</u>	<u>Seminole County Cost Share</u>	<u>Estimated Capital Cost</u>
1. Sheriff's Evidence Storage Bldg & Forensics Lab	\$5.0 M	-	-	-	\$8.5 M	-	\$13.5 M
2. Consolidated Public Works Service Center	-	\$15.0 M	\$2.0 M	\$2.0 M	-	-	\$19.0 M
3. Elections Warehouse	\$5.9 M	-	-	-	-	-	\$5.9 M
4. City Island Courthouse Improvements	\$1.0 M	-	-	-	-	-	\$1.0 M
5. Medical Examiner Facility	\$5.4 M	-	-	-	-	\$5.4 M	\$10.8 M
6. Emergency Med Services Facility (EVAC)	\$7.4 M	-	-	-	-	-	\$7.4 M
7. Sheriff's District 2 Services Office	-	-	-	-	\$3.4 M	-	\$3.4 M
8. Court/Central Services Warehouse	\$3.4 M	-	-	-	-	-	\$3.4 M
	\$28.1 M	\$15.0 M	\$2.0 M	\$2.0 M	\$11.9 M	\$5.4 M	\$64.4 M

Capital Projects Cost: \$64.4 M*

** In 2017 dollars*

