

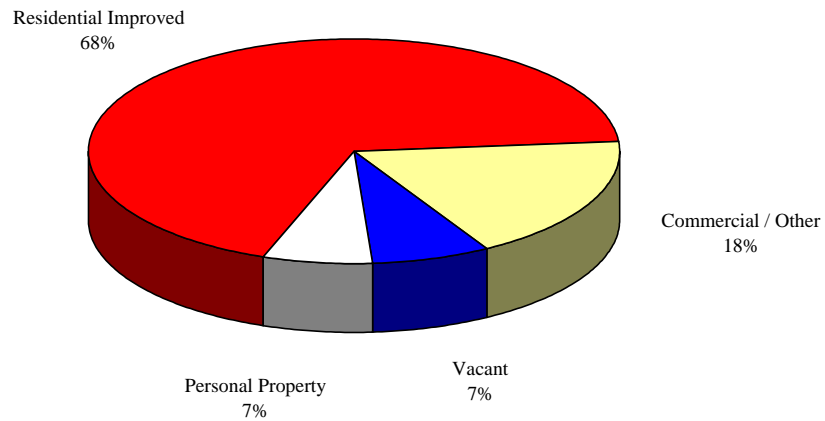
2003 Base	\$	21.541	Billion	
Increases in the 2004 Tax Base				
New Construction	\$	795.9	Million	3.69%
Net Reassessment(Real Estate)		2,092.5	Million	9.71%
Centrally Assessed		3.3	Million	0.02%
Personal Property		288.1	Million	1.34%
Total Increase in Base		3.180	Billion	
2004 Base	\$	24.721	Billion	14.8%
2004 Homestead and Senior Exemptions				
	\$	3.475	Billion	
2003 Homestead and Senior Exemptions				
		3.414	Billion	
Increase	\$	0.061	Billion	0.018

Total Exemptions represent 19.4% of the just value (market value)

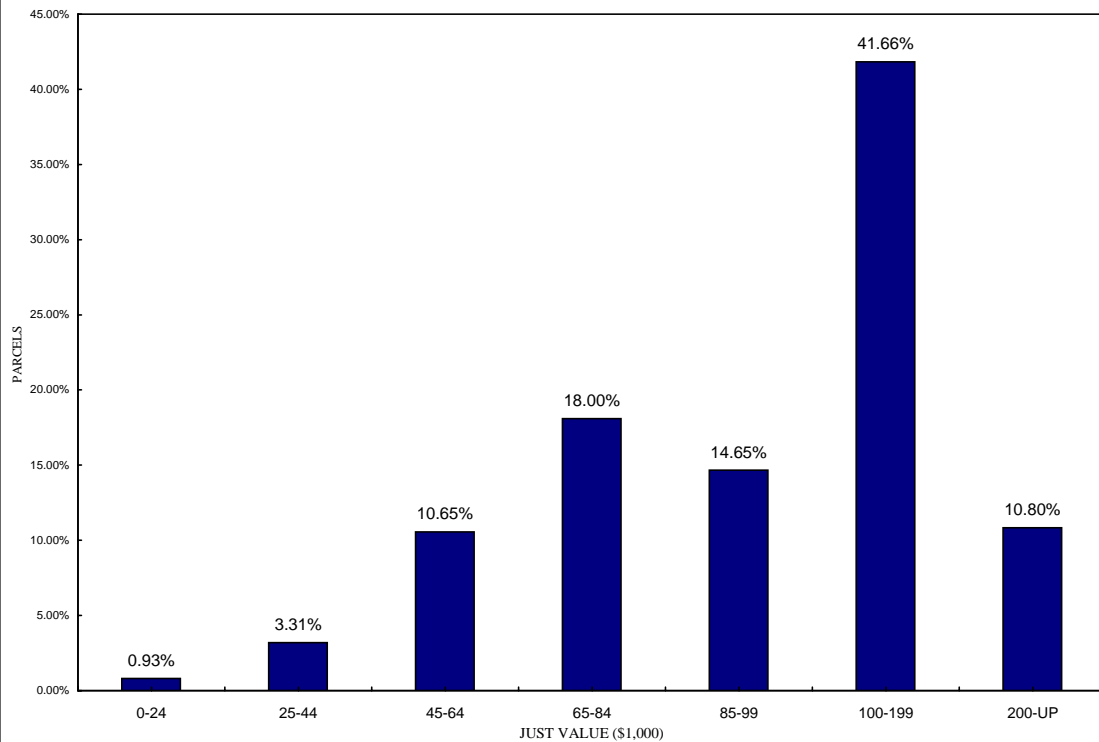
COUNTY OF VOLUSIA, FLORIDA

Classification of Property

Total Just Value \$35,462,537,248

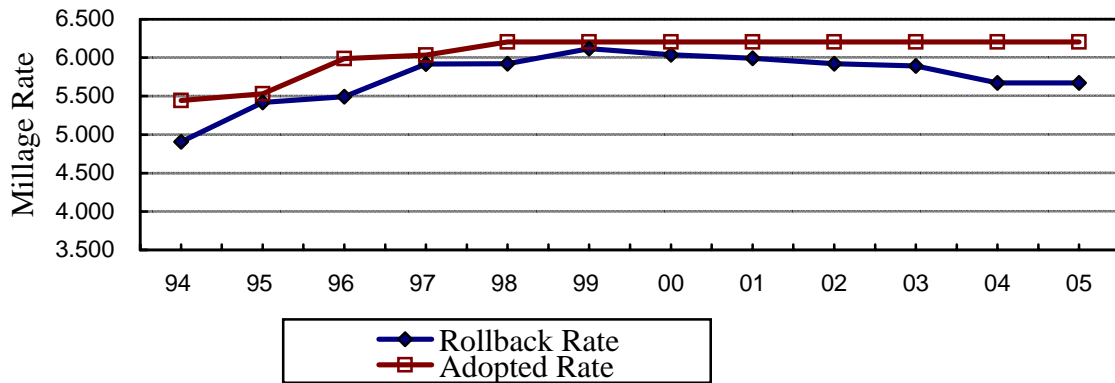


RESIDENTIAL IMPROVED PROPERTY



COUNTY OF VOLUSIA, FLORIDA

Countywide Ad Valorem Tax Rates Fiscal Year 2004-05



Countywide Ad Valorem Tax Rates		
Fiscal Year	Rollback Rate	Adopted Rate
1993-94	4.907	5.443
1994-95	5.418	5.532
1995-96	5.492	5.989
1996-97	5.918	6.036
1997-98	5.923	6.204
1998-99	6.116	6.204
1999-00	6.038	6.204
2000-01	5.994	6.204
2001-02	5.920	6.204
2002-03	5.892	6.204
2003-04	5.672	6.204
2004-05	5.672	6.204

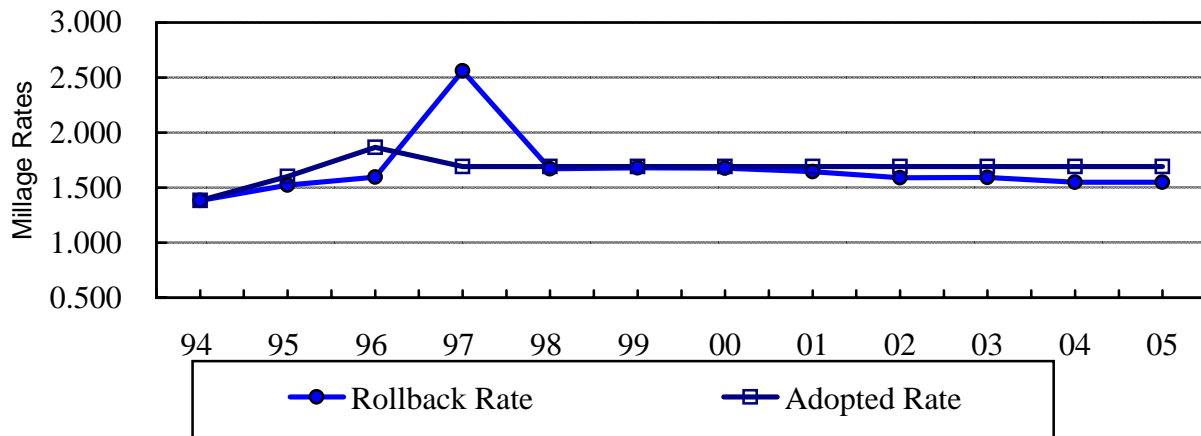
Excludes voted millage

COUNTY OF VOLUSIA, FLORIDA

Municipal Service District

Ad Valorem Tax Rates

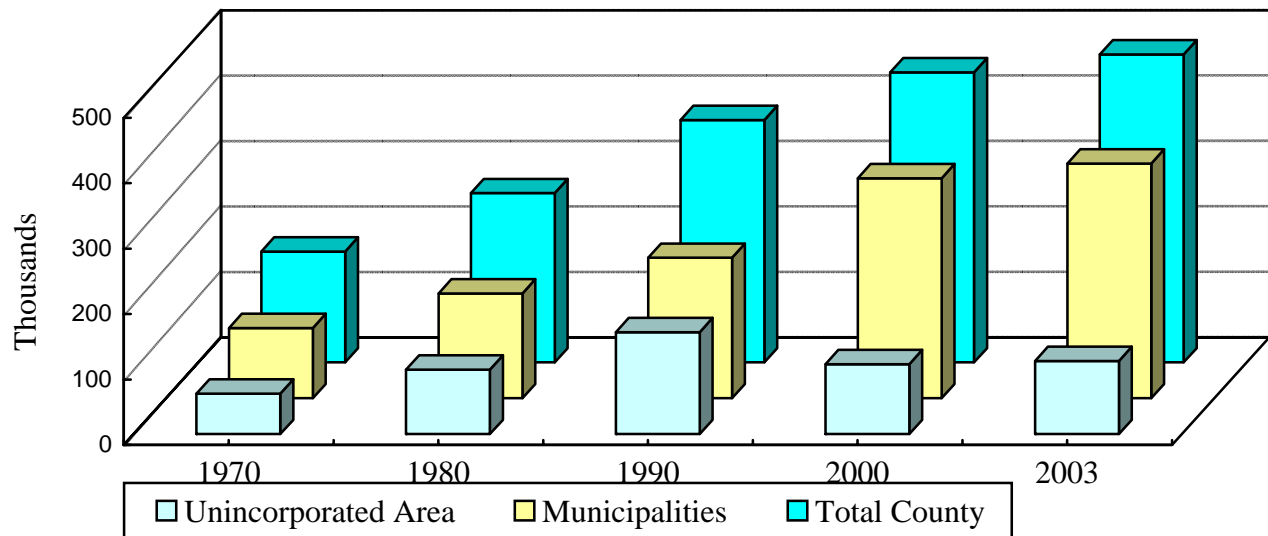
Fiscal Year 2004-05



Municipal Service District Ad Valorem Tax Rates		
Fiscal Year	Rollback Rate	Adopted Rate
1993-94	1.384	1.384
1994-95	1.524	1.601
1995-96	1.595	1.865
1996-97	2.560	1.691
1997-98	1.672	1.691
1998-99	1.680	1.691
1999-00	1.677	1.691
2000-01	1.645	1.691
2001-02	1.590	1.691
2002-03	1.594	1.691
2003-04	1.550	1.691
2004-05	1.550	1.691

COUNTY OF VOLUSIA, FLORIDA

Population



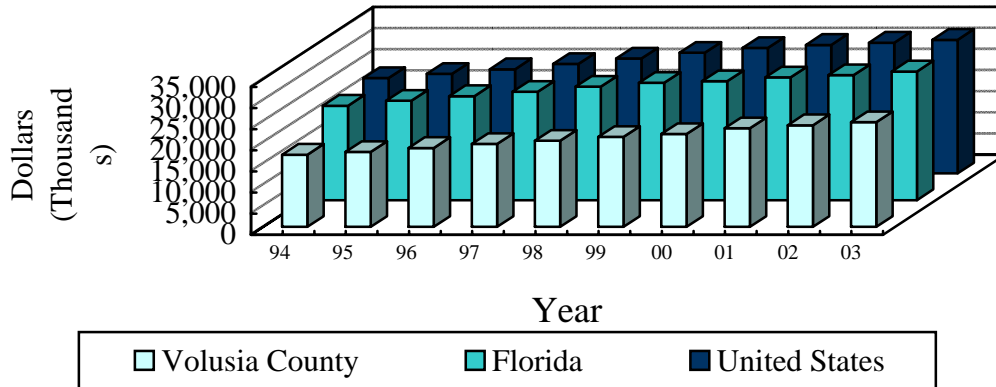
Population Distribution (Rounded)						Average Annual Growth 2002-2003
	1970	1980	1990	2000	2003	
Daytona Beach	45,300	54,200	61,991	64,112	64,889	-0.1%
Daytona Beach Shores	770	1,300	2,197	4,299	4,514	2.5%
DeBary*	N/A	N/A	N/A	15,559	17,124	3.7%
DeLand	11,600	15,350	16,622	20,904	22,901	2.6%
Deltona*	N/A	N/A	N/A	69,543	76,332	3.4%
Edgewater	3,350	6,700	15,351	18,668	20,088	2.9%
Flagler Beach	N/A	N/A	N/A	76	76	0.0%
Holly Hill	8,200	10,000	11,141	12,119	12,504	0.0%
Lake Helen	1,300	2,000	2,344	2,743	2,823	1.4%
New Smyrna Beach	10,600	13,650	16,549	20,048	20,595	1.2%
Oak Hill	750	900	917	1,378	1,481	1.0%
Orange City	1,800	2,800	5,347	6,604	7,102	6.2%
Ormond Beach	14,050	21,400	29,721	36,301	38,325	1.9%
Pierson	650	1,000	2,988	2,596	2,621	-0.1%
Ponce Inlet	330	1,000	1,704	2,513	2,917	5.4%
Port Orange	3,800	18,800	35,399	45,823	50,981	4.4%
South Daytona	5,000	11,300	12,488	13,177	13,714	2.8%
Unincorporated	62,000	98,400	155,978	106,880	111,783	2.4%
TOTAL	169,500	258,800	370,737	443,343	470,770	6.2%

Source: University of Florida, Bureau of Economic and Business Research

*Incorporated after April 1, 1990

COUNTY OF VOLUSIA, FLORIDA

Per Capita Personal Income



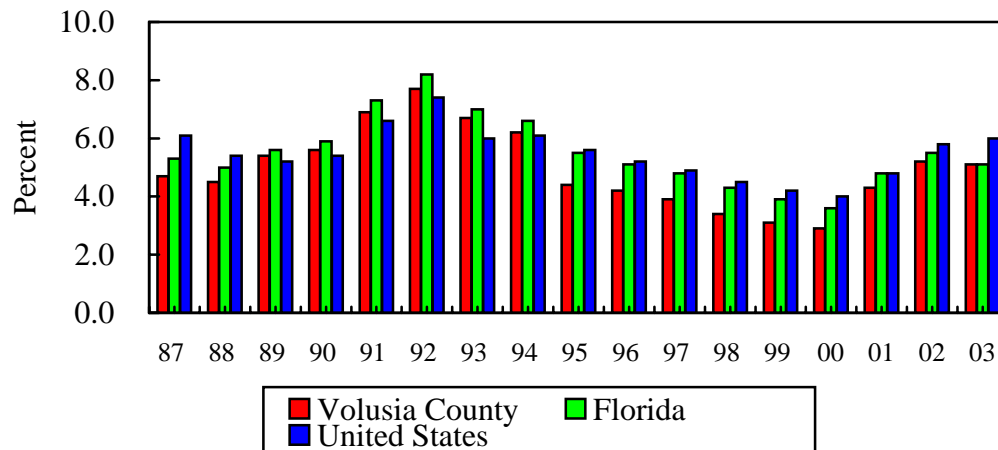
Per Capita Personal Income						
Year	Volusia County	Percent Change	Florida	Percent Change	U.S.	Percent Change
1994	17,086	3.7%	22,340	3.2%	22,581	4.0%
1995	17,704	3.6%	23,512	5.2%	23,562	4.3%
1996	18,660	5.4%	24,616	4.7%	24,651	4.6%
1997	19,600	5.0%	25,645	4.2%	25,924	5.2%
1998	20,387	4.0%	26,845	4.7%	27,203	4.9%
1999	21,293	4.4%	27,781	3.5%	28,546	4.9%
2000	21,988	3.3%	28,145	1.3%	29,676	4.0%
2001	23,329	6.1%	29,048	3.2%	30,413	2.5%
2002	24,059	3.1%	29,596	1.9%	30,941	1.7%
2003	24,747	2.9%	30,446	2.9%	31,632	2.2%

Source: U.S. Department of Commerce, Bureau of Economic Analysis, Survey of Current Business; Regional Economic Information System, Bureau of Economic Analysis

Although Volusia County's unemployment rate is notably lower than both the State and National averages, our average per capita income is lower as well. This trend is indicative of our growing tourism industry and demand for service related jobs. The County's commitment to improving Economic Development should result in higher paying jobs which will ultimately eliminate, if not reverse, the current per capita income gap that has steadily increased in recent years.

COUNTY OF VOLUSIA, FLORIDA

Unemployment Rate



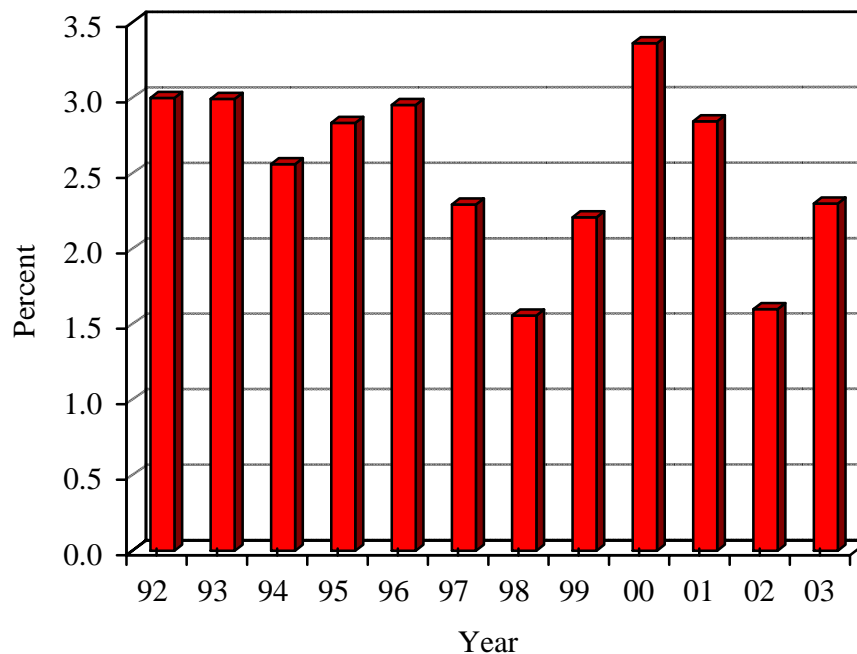
<u>Unemployment Rate</u>			
Year	Volusia County	Florida	United States
1987	4.7	5.3	6.1
1988	4.5	5.0	5.4
1989	5.4	5.6	5.2
1990	5.6	5.9	5.4
1991	6.9	7.3	6.6
1992	7.7	8.2	7.4
1993	6.7	7.0	6.0
1994	6.2	6.6	6.1
1995	4.4	5.5	5.6
1996	4.2	5.1	5.2
1997	3.9	4.8	4.9
1998	3.4	4.3	4.5
1999	3.1	3.9	4.2
2000	2.9	3.6	4.0
2001	4.3	4.8	4.8
2002	5.2	5.5	5.8
2003	5.1	5.1	6.0

Source: Florida Research & Economic Database

The unemployment rate for Volusia County has been consistently lower than the averages for both Florida and the United States since 1995.

UNITED STATES

Consumer Price Index



<u>Consumer Price Index</u>		
	U.S.	
	Index	Inflation
Year	1982-1984=100	Percent
1992	140.3	3.0%
1993	144.5	3.0%
1994	148.2	2.6%
1995	152.4	2.8%
1996	156.9	3.0%
1997	160.5	2.3%
1998	163.0	1.6%
1999	166.6	2.2%
2000	172.2	3.4%
2001	177.1	2.8%
2002	179.9	1.6%
2003	184.0	2.3%

Source: U.S. Department of Labor, Bureau of Labor Statistics

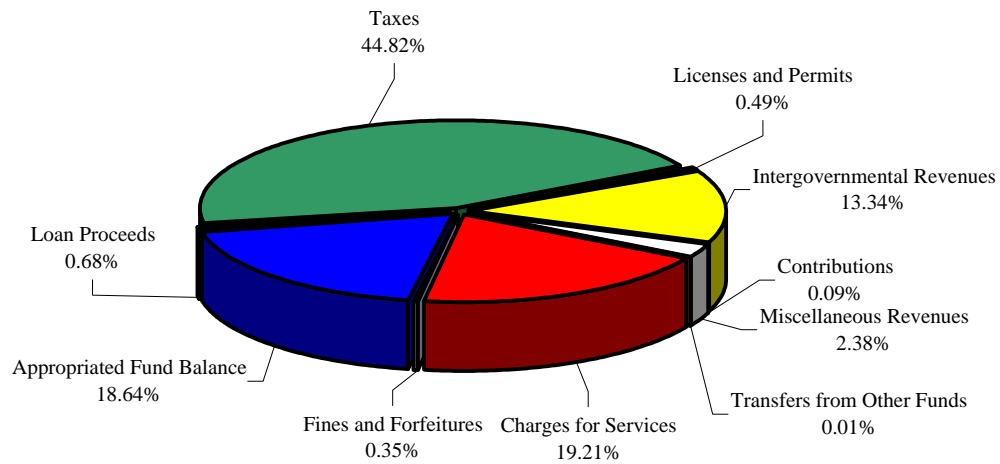
The Consumer Price Index (CPI) is an economic measure of inflation based on a "market basket" of goods and their corresponding changes in price from year to year. It exemplifies trends in the overall cost of doing business. Inflation affects all costs from personal wages to materials to borrowed money.

COUNTY OF VOLUSIA, FLORIDA

Revenues By Major Source

Fiscal Year 2004-05

\$512,982,437



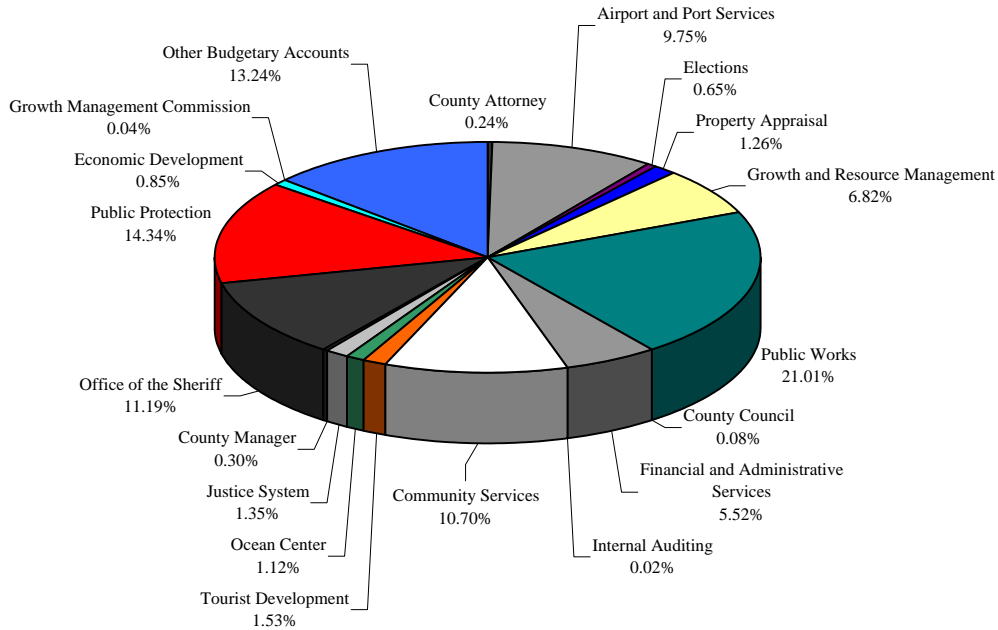
Revenues By Major Source		
Fiscal Year 2004-05		
Taxes	\$	229,911,718
Licenses and Permits		2,497,346
Intergovernmental Revenues		68,440,371
Charges for Services		98,536,357
Fines and Forfeitures		1,772,198
Miscellaneous Revenues		12,226,293
Non-Revenues		
Contributions		482,500
Loan Proceeds		3,467,600
Transfers from Other Funds		52,527
Appropriated Fund Balance		95,595,527
TOTAL REVENUES	\$	512,982,437

COUNTY OF VOLUSIA, FLORIDA

Expenditures By Department

Fiscal Year 2004-05

\$512,982,437



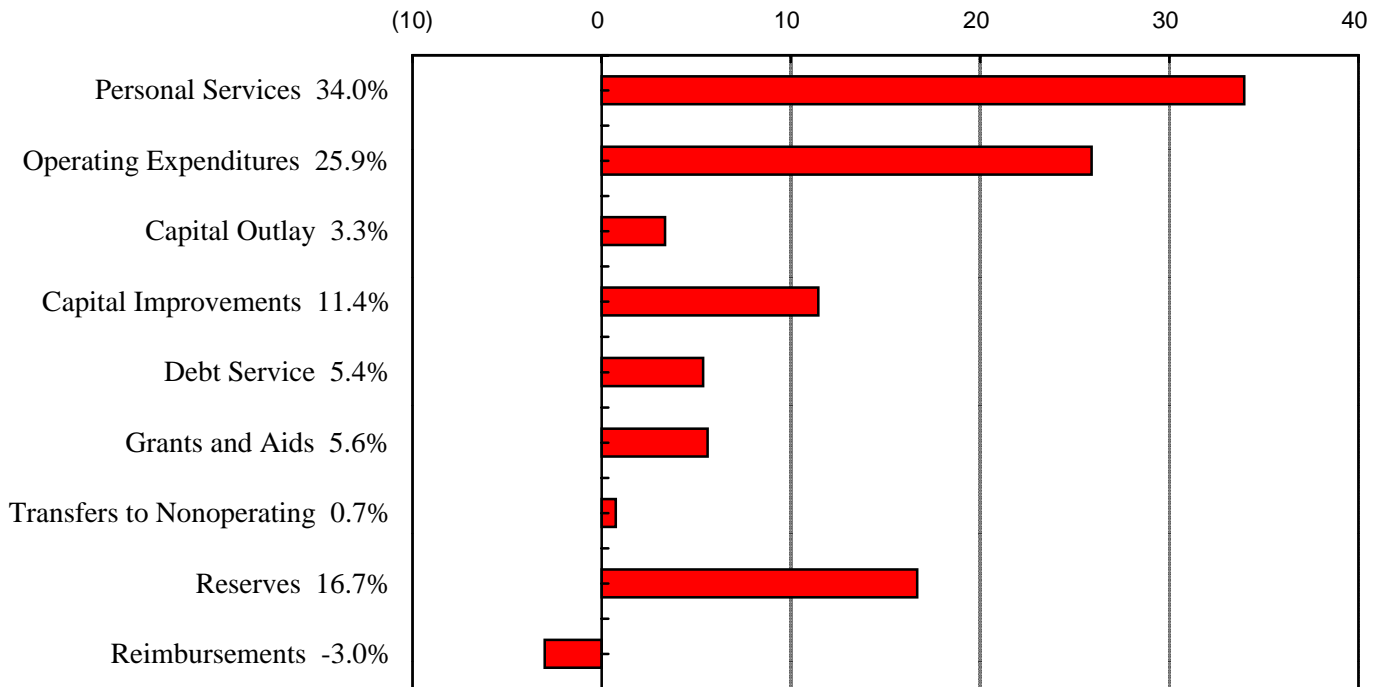
Expenditures By Department Fiscal Year 2004-05			
County Council	\$	395,004	Growth Management Commission 193,036
County Manager		1,522,281	Growth and Resource Management 36,142,955
County Attorney		1,220,529	Justice System 6,943,445
Elections		3,334,843	Office of the Sheriff 59,035,383
Internal Auditing		99,895	Public Protection 74,409,871
Property Appraisal		6,460,168	Community Services 56,145,298
Economic Development		4,373,938	Public Works 107,970,190
Airport and Port Services		49,995,062	Financial and Administrative Services 28,325,587
Ocean Center		5,729,138	Other Budgetary Accounts 105,004,426
Tourist Development		7,840,645	Interfund Transfers (42,159,257)
		TOTAL EXPENDITURES	\$ 512,982,437

COUNTY OF VOLUSIA, FLORIDA

Expenditures By Category

Fiscal Year 2004-05

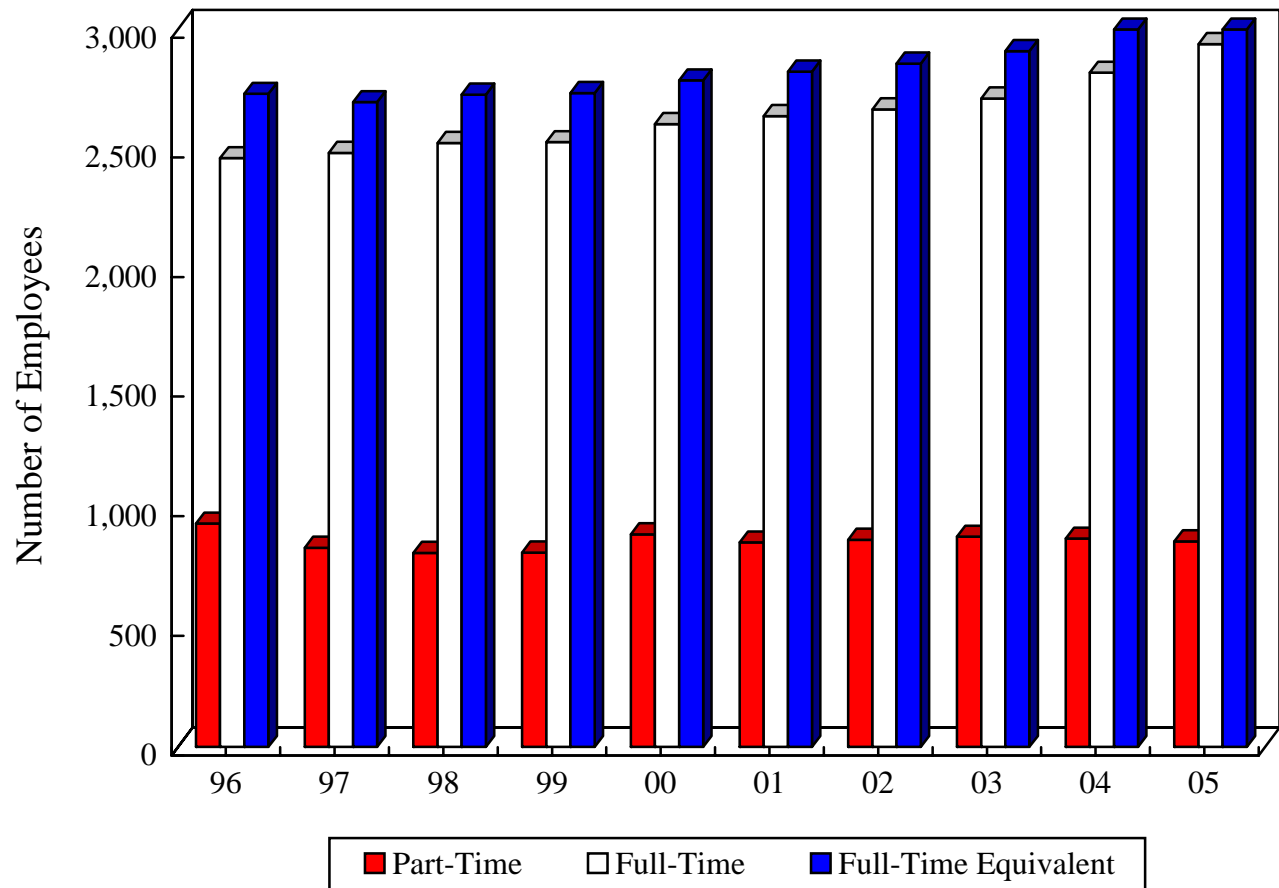
\$512,982,437



Expenditures By Category Fiscal Year 2004-05		
Personal Services	\$	174,206,806
Operating Expenditures		132,796,530
Capital Outlay		17,124,232
Subtotal Operating Expenses	\$	324,127,568
Capital Improvements		58,720,552
Debt Service		27,491,659
Grants and Aids		28,735,212
Transfers to Nonoperating		3,783,108
Reserves		85,575,675
TOTAL EXPENDITURES	\$	528,433,774
Service Charge Reimbursements		(15,451,337)
NET EXPENDITURES	\$	512,982,437

County of Volusia, Florida

Personnel Authorizations



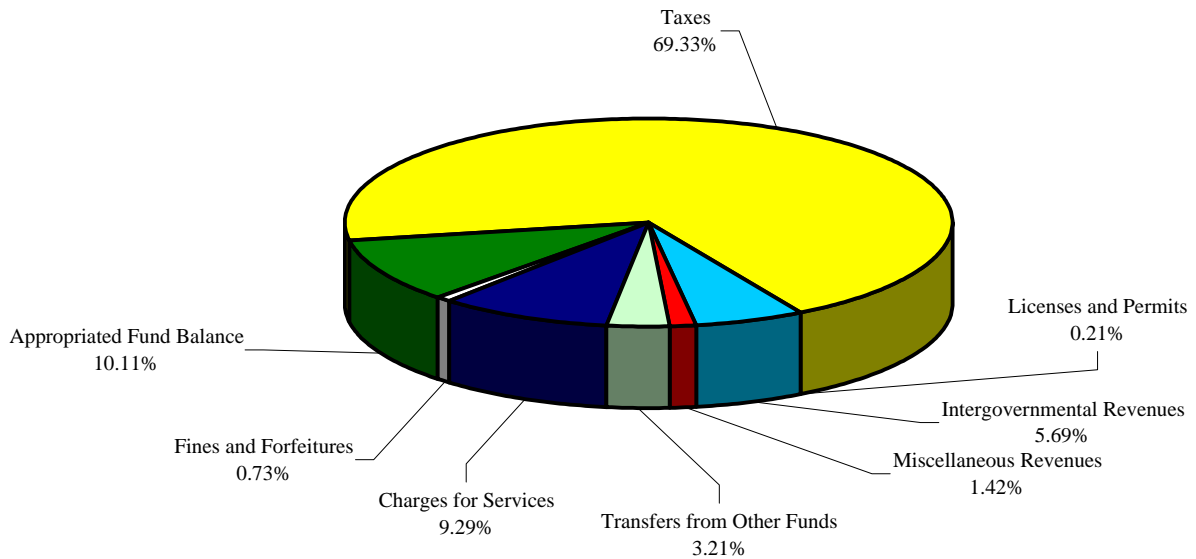
County of Volusia Personnel Authorizations FY 1995-96 to FY 2004-05			
Year	Part-time	Full-time	Full-time Equivalent
1995-96	934	2,462	2,731
1996-97	833	2,484	2,696
1997-98	812	2,525	2,728
1998-99	813	2,529	2,734
1999-00	889	2,604	2,787
2000-01	855	2,638	2,824
2001-02	866	2,666	2,857
2002-03	879	2,711	2,909
2003-04	871	2,819	3,035
2004-05	860	2,939	3,155

COUNTY OF VOLUSIA, FLORIDA

General Fund Revenues By Major Source

Fiscal Year 2004-05

\$189,953,036



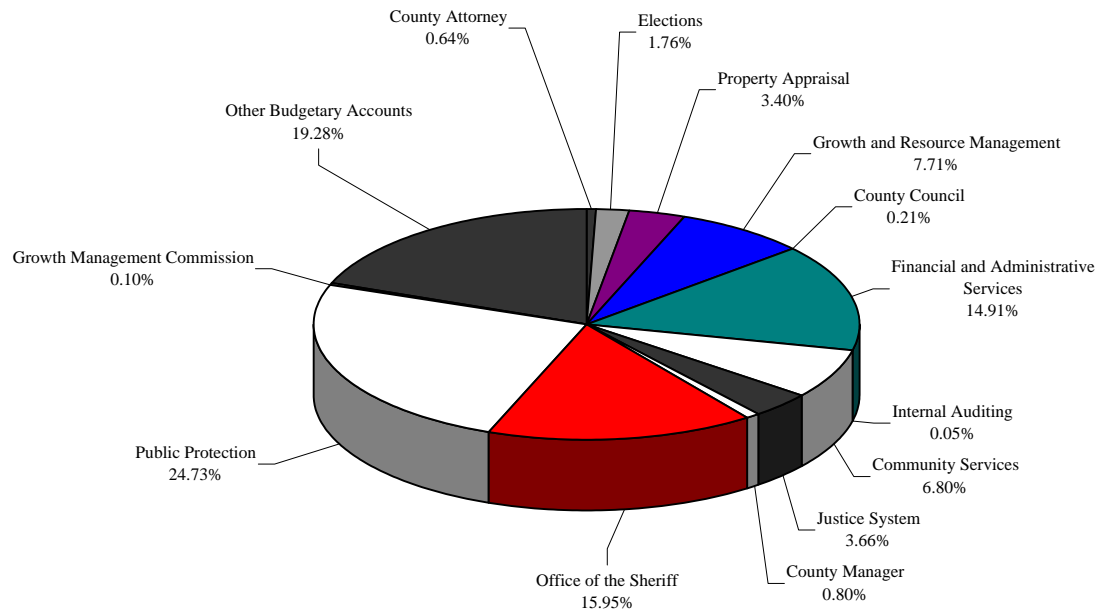
General Fund Revenues By Major Source		
Fiscal Year 2004-05		
Taxes	\$	131,701,637
Licenses and Permits		407,300
Intergovernmental Revenues		10,809,143
Charges for Services		17,647,226
Fines and Forfeitures		1,384,198
Miscellaneous Revenues		2,700,210
Non-Revenues		
Transfers from Other Funds		6,105,080
Appropriated Fund Balance		19,198,242
TOTAL REVENUES	\$	189,953,036

COUNTY OF VOLUSIA, FLORIDA

General Fund Expenditures By Department

Fiscal Year 2004-05

\$189,953,036



General Fund Expenditures By Department Fiscal Year 2004-05

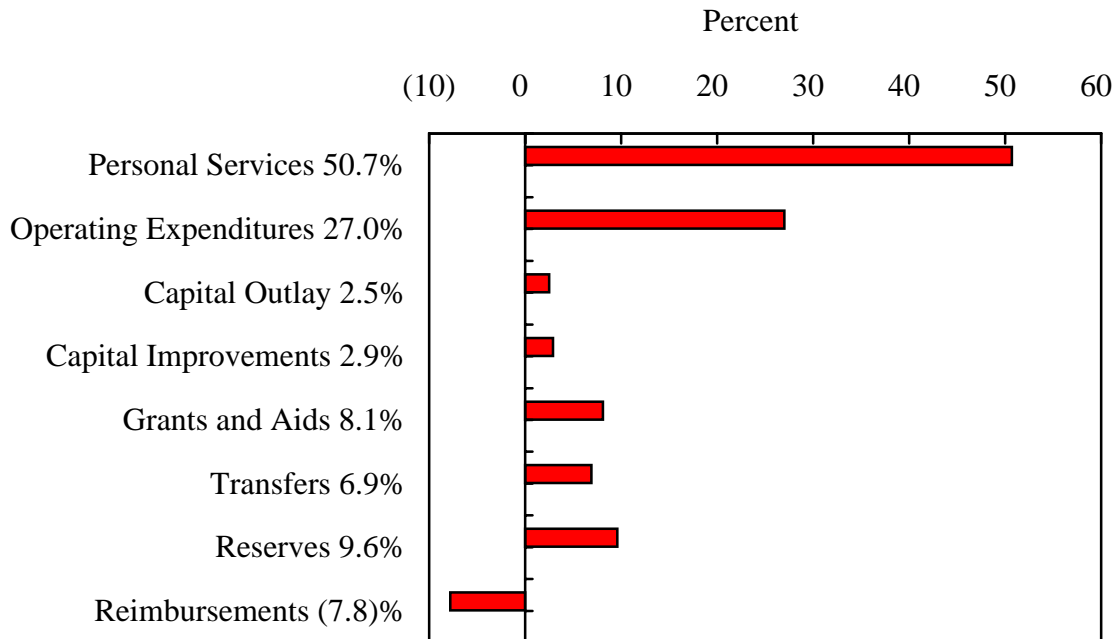
County Council	\$ 395,004	Justice System	6,943,445
County Manager	1,522,281	Office of the Sheriff	30,296,755
County Attorney	1,220,529	Public Protection	46,968,643
Elections	3,334,843	Community Services	12,921,288
Internal Auditing	99,895	Financial and Administrative Services	28,318,008
Property Appraisal	6,460,168	Other Budgetary Accounts	36,629,894
Growth Management Commission	193,036		
Growth and Resource Management	14,649,247		
		TOTAL EXPENDITURES	\$ 189,953,036

COUNTY OF VOLUSIA, FLORIDA

General Fund Expenditures By Category

Fiscal Year 2004-05

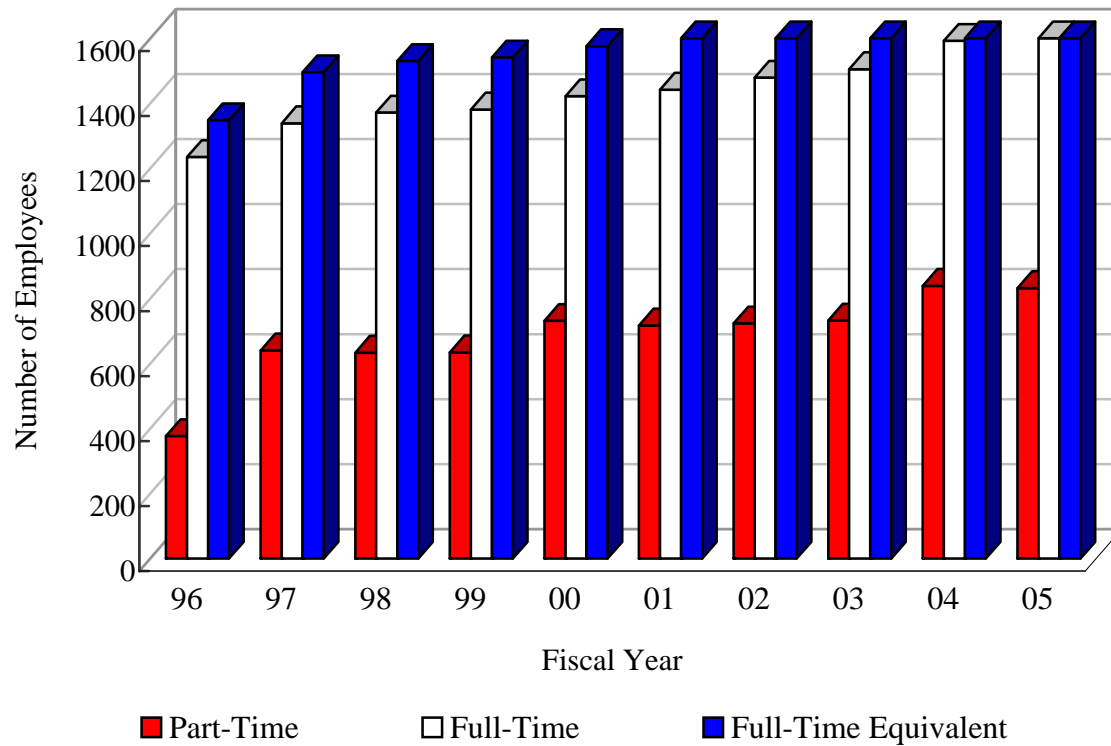
\$189,953,036



General Fund Expenditures By Category Fiscal Year 2004-05	
Personal Services	\$ 96,371,176
Operating Expenditures	51,313,019
Capital Outlay	4,804,562
Subtotal Operating Expenses	\$ 152,488,757
Capital Improvements	5,498,300
Grants and Aids	15,303,289
Transfers	13,130,192
Reserves	18,324,265
TOTAL EXPENDITURES	\$ 204,744,803
Service Charge Reimbursements	(14,791,767)
NET EXPENDITURES	\$ 189,953,036

COUNTY OF VOLUSIA, FLORIDA

General Fund Personnel Authorizations



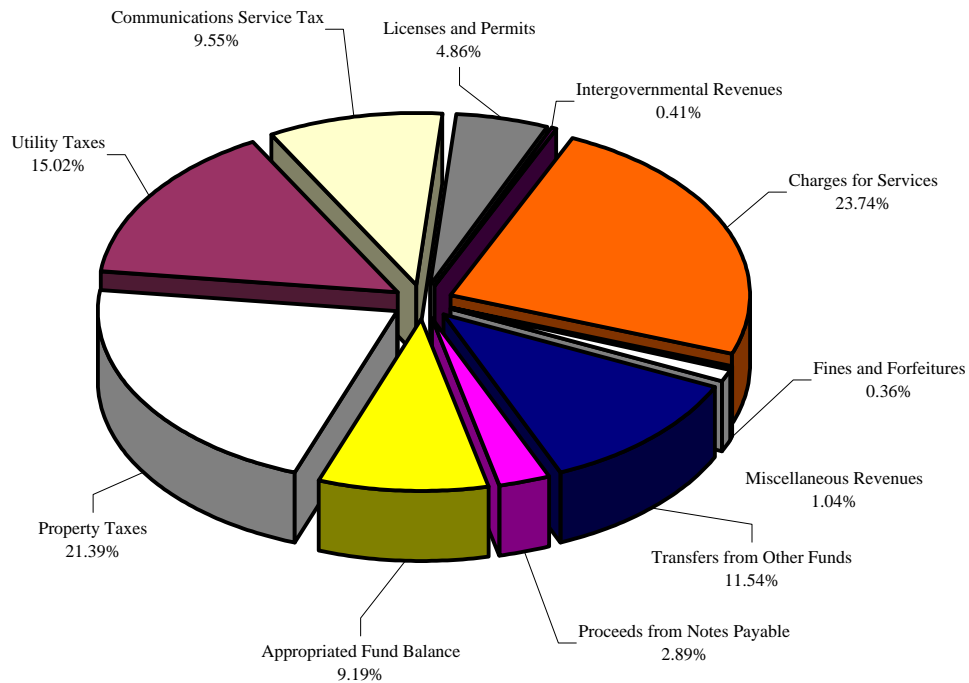
General Fund Personnel Authorizations FY 1995-96 to FY 2004-05			
Year	Part-time	Full-time	Full-time Equivalent
1995-96	377	1,235	1,348
1996-97	640	1,339	1,496
1997-98	633	1,372	1,530
1998-99	634	1,381	1,541
1999-00	731	1,422	1,576
2000-01	717	1,442	1,606
2001-02	723	1,479	1,646
2002-03	732	1,505	1,677
2003-04	839	1,592	1,790
2004-05	832	1,675	1,875

COUNTY OF VOLUSIA, FLORIDA

Municipal Service District Revenues By Major Source

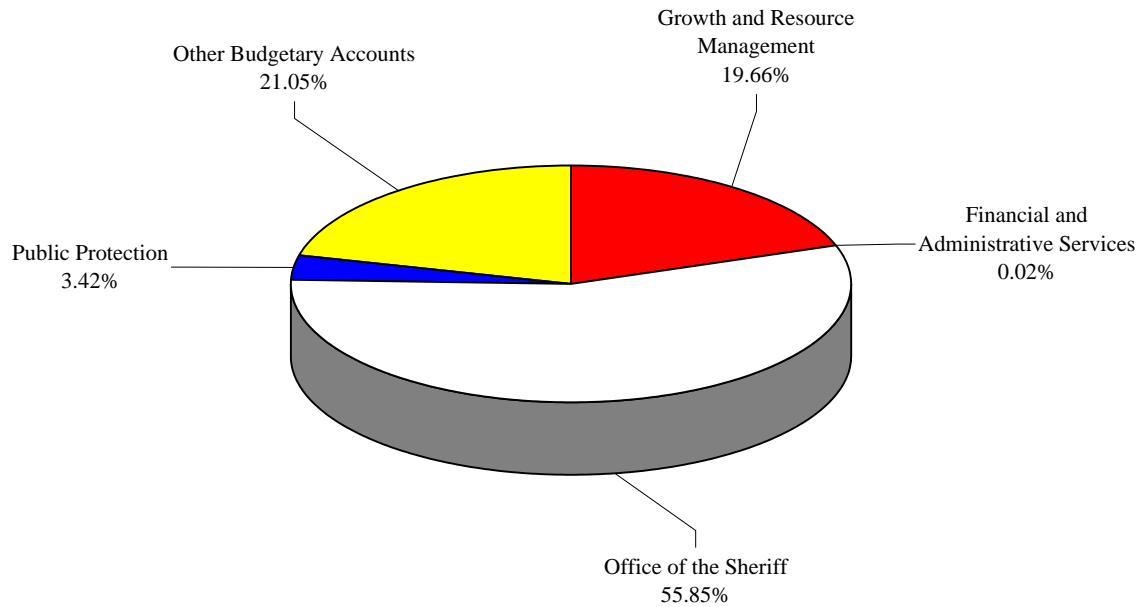
Fiscal Year 2004-05

\$42,937,590



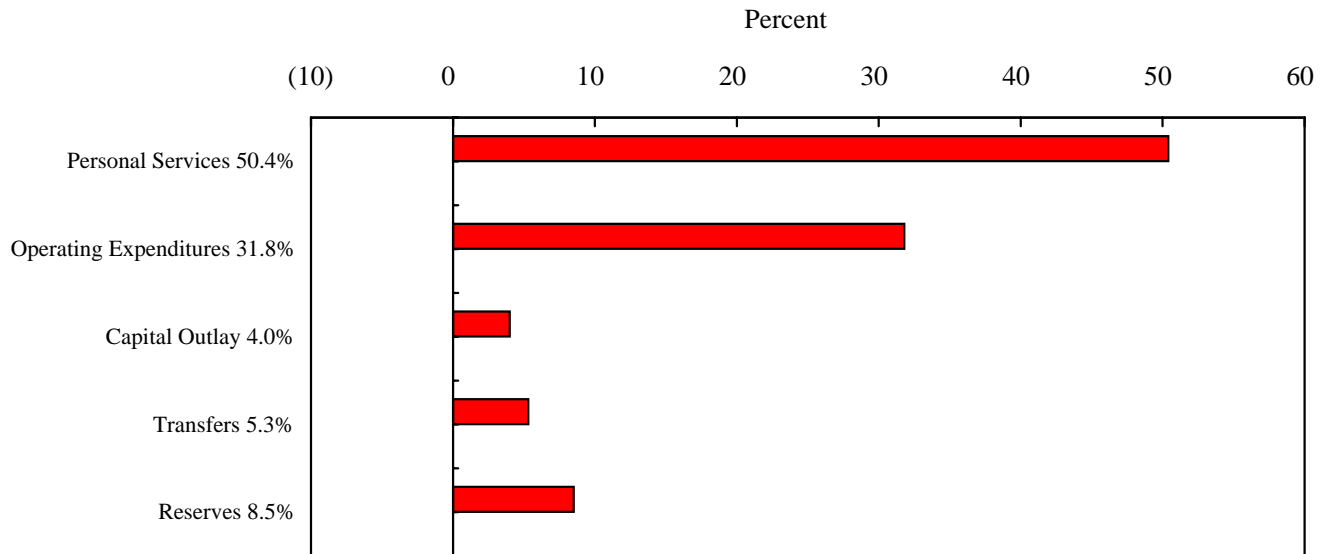
Municipal Service District Revenues By Major Source		
Fiscal Year 2004-05		
Property Taxes	\$	9,186,066
Utility Taxes		6,450,000
Communications Service Tax		4,100,000
Licenses and Permits		2,087,546
Intergovernmental Revenues		177,000
Charges for Services		10,195,491
Fines and Forfeitures		153,000
Miscellaneous Revenues		448,000
Non-Revenues		
Transfers from Other Funds		4,953,706
Proceeds from Notes Payable		1,242,600
Appropriated Fund Balance		3,944,181
TOTAL REVENUES	\$	42,937,590

COUNTY OF VOLUSIA, FLORIDA
Municipal Service District Expenditures By Department
Fiscal Year 2004-05
\$42,937,590



Municipal Service District Expenditures By Department Fiscal Year 2004-05			
Growth and Resource Management	\$	8,440,473	Financial and Administrative Services 7,579
Office of the Sheriff		23,981,519	Public Protection 1,470,124
			Other Budgetary Accounts 9,037,895
		TOTAL EXPENDITURES \$ 42,937,590	

COUNTY OF VOLUSIA, FLORIDA
Municipal Service District Expenditures By Category
Fiscal Year 2004-05
\$42,937,590

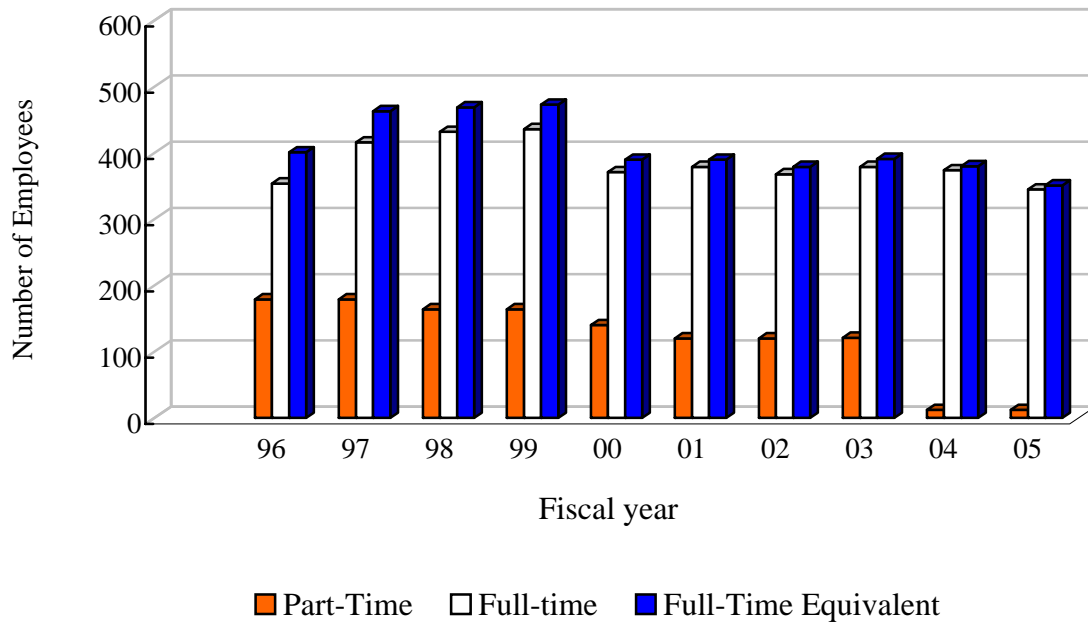


Municipal Service District Expenditures By Category Fiscal Year 2004-05	
Personal Services	\$ 21,650,330
Operating Expenditures	13,643,982
Capital Outlay	1,721,853
Subtotal Operating Expenses	\$ 37,016,165
Transfers	2,269,243
Reserves	3,652,182
TOTAL EXPENDITURES	\$ 42,937,590

COUNTY OF VOLUSIA, FLORIDA

Municipal Service District

Personnel Authorizations



Municipal Service District Personnel Authorizations FY 1995-96 to FY 2004-05			
Year	Part-time	Full-time	Full-time Equivalent
1995-96	179	354	401
1996-97	179	416	463
1997-98	164	432	469
1998-99	164	436	473
1999-00	140	371	390
2000-01	120	379	390
2001-02	120	368	379
2002-03	121	379	391
2003-04	12	374	380
2004-05	12	345	351