

# CAPITAL PROJECTS

Upgrades Completed FY14-15  
Planned Projects FY15-17

# Branch Jail Renovation & New Construction

## New Construction

- Vehicle sally port

## Renovations

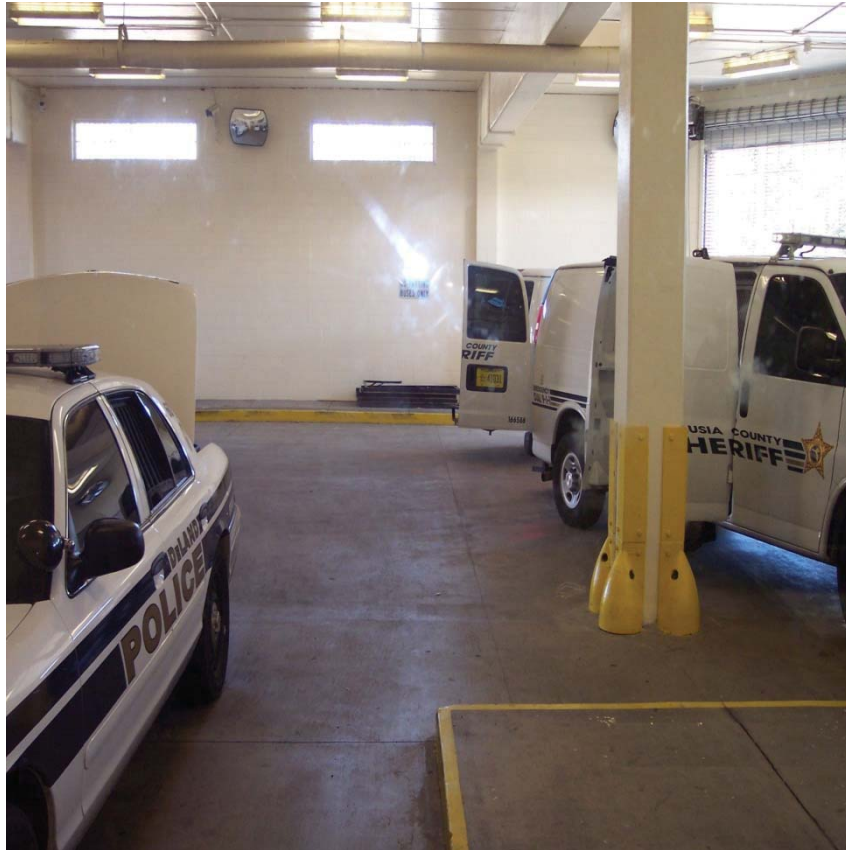
- Intake/Receiving
- Booking Office-Vehicle sally port & Lobby
- Medical – Intake & Clinic

Total cost: \$5.9M

# Branch Jail Vehicle Sally Port

## BEFORE

Capacity 4-5 cars /vans



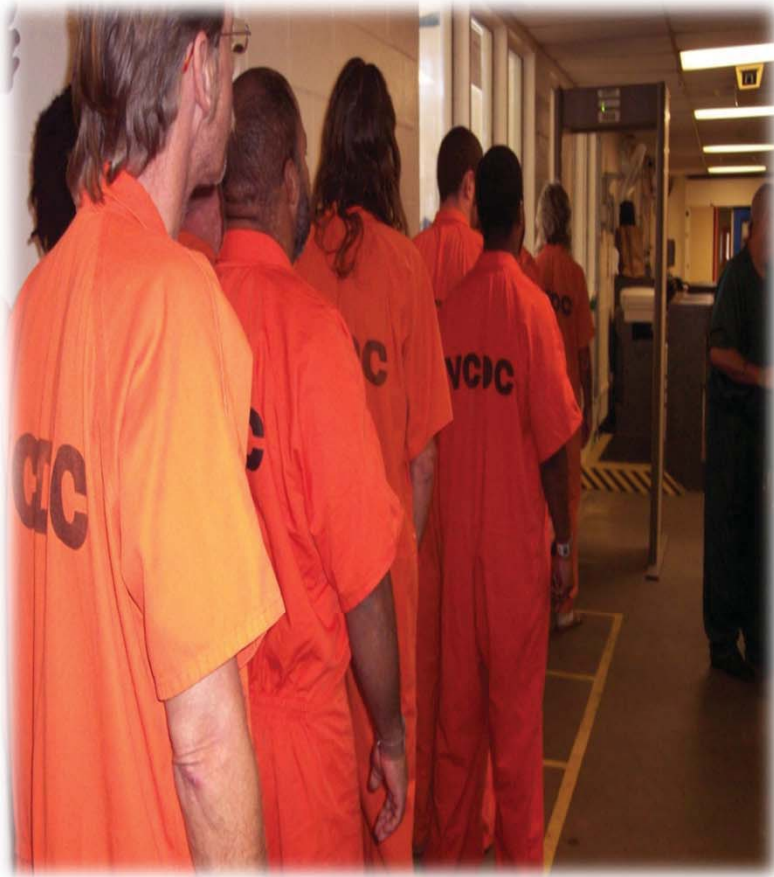
## AFTER

Completed August, 2014. Capacity 10 cars/vans



# Branch Jail Intake/Receiving

**BEFORE**



**AFTER**





# Branch Jail Booking Office Vehicle Sally Port & Lobby

## Booking Office Vehicle Sally Port



## Booking/Bonding/Information Lobby



Added security entrance



# Branch Jail Medical Intake

## **AFTER**

Previous Booking Office.

Now for observing incoming inmates & exam room for sick call.



# Branch Jail Medical Clinic

## BEFORE

6 cells, exam rooms, limited office space. Total = 1,805 SF



## AFTER

Added 5-bed open bay unit. Relocated Pharmacy, converted office areas.  
Total = 4,335 SF





# Correctional Facility Replacement Construction

## BEFORE

5 wooden dormitory structures  
Dating from mid-1970s



## AFTER

2 concrete structures, 4 pods  
Opened Feb, 2015. Cost \$4.1 M





# VCCF West Wing Upgrade – Roof & Air Handler

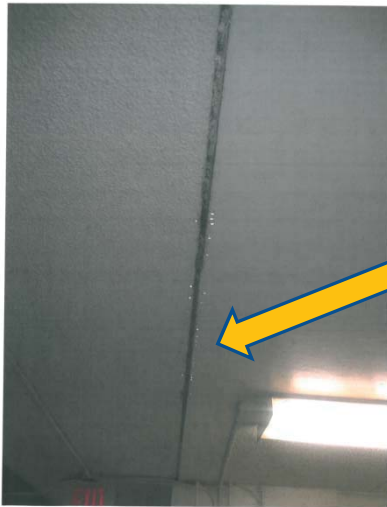
Standing water  
on roof



Completed July, 2015

Budgeted - \$80,000

Final Cost - \$55,000  
*10 year warranty*



Leak line running  
length of ceiling  
inside building

Buckets to catch water,  
signage for safety,  
fan to dry area



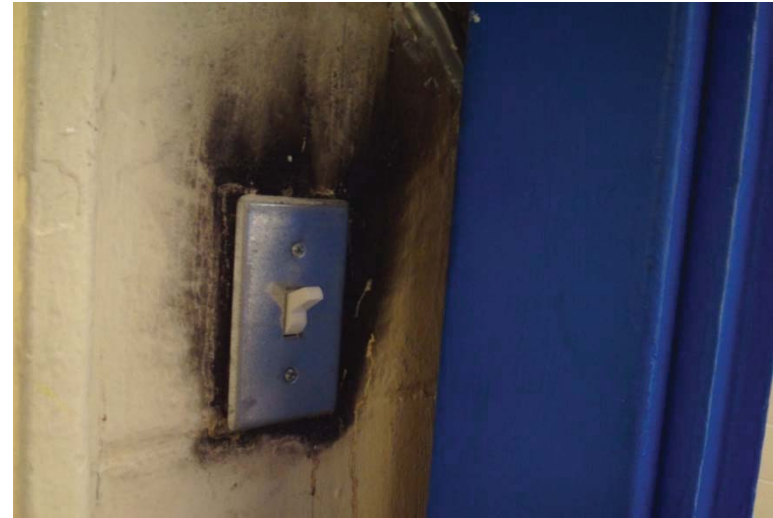
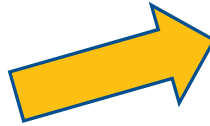
# Corrections Capital FY15-17

- Roof Replacement  
Branch Jail

*2 year phased project - \$3.0 M*

*(+ \$75,000 for Phase 2 Engineering Carried Forward from FY 14-15)*

## Branch Jail - Roof Leak – ID/Receiving



Led to burnt electric wires, smoke, and lights out in ID/Receiving on 3/15/14. Lack of lights and computers led to calling VCSO Dispatch to advise law enforcement that the jail was closed to admissions until further notice. Fortunately, jail Maintenance was able to apply a temporary patch that stopped the leak; loss of operations was only 30 mins in duration.

# Branch Jail - Roof Leak – Administrative Services

Along same latitude as ID/Receiving, but other side of building

**LAST YEAR – April, 2014**



**TODAY – Sept 23, 2015**



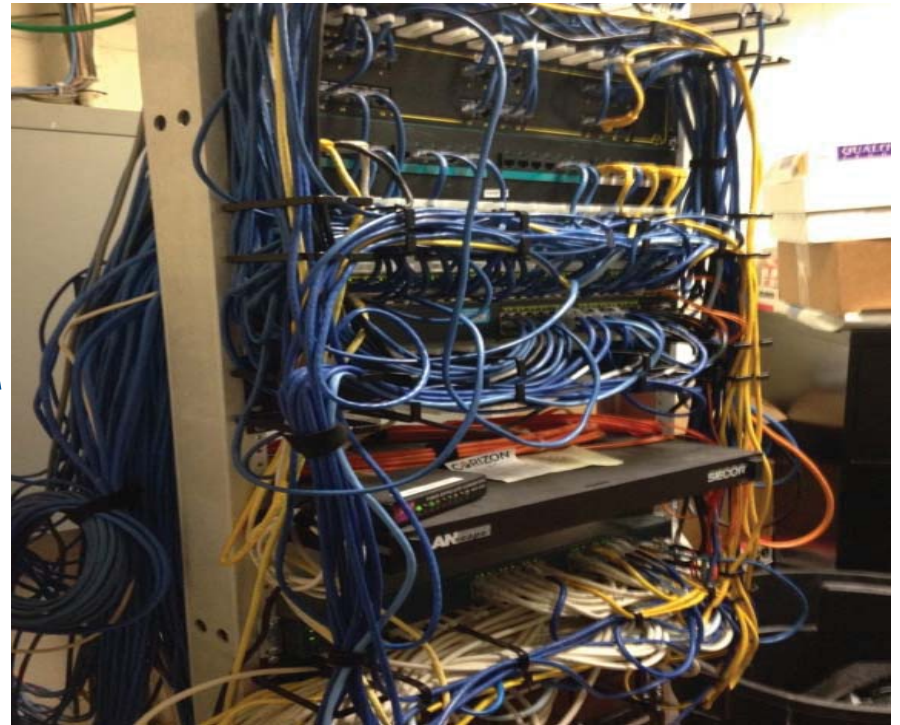


# Branch Jail - Roof Leak – Interior

IA Office/ back side of Housing Unit



Here's what's under the leak.  
The rack for the computer and  
phone switches and routers for  
interior of building (Director  
and Warden's offices Clinic,  
Housing Units).



# Corrections Capital FY15-17

- Emergency Generator Switch Gear  
Branch Jail (New unit)  
Correctional Facility (using VCBJ unit , new panel)  
*2 year phased project - \$1.6 M*  
*( VCBJ - \$1.1M, VCCF - \$.5 M)*

# Correctional Facility – Emergency Switch Gear

Burned switch gear July, 2013. Original equipment dating from 1977 when VCCF built.  
Replacement parts no longer in production. VCCF without electric for 12 hours.  
Replacement parts located online from salvage warehouses in Arizona & Colorado.



## Corrections Capital FY15-17

- Potable Water Pipes , VCBJ - \$120,000

*Phased replacement of original cast iron pipes (c. 1987)*

- Razor Wire Replacement, VCCF – \$20,000

*Phased replacement fencing/razor wire original (c. 1977)*

- Exterior Security Enhancement, VCBJ - \$20,000

*Front entrance apron security (bollards)*



# Corrections Software Implementation

## *Armor Electronic Health Record - July 20, 2015*

- Clear records
- Reduced filing
- Improved records security
- Reduced space needs for records storage

## *Corrections Commissary and Inmate Banking*

- Integrated with jail management and inmate phone system

## *Corrections Video Visitation RFP*

- Upgrade and expansion

# Public Protection Software Implementation

## Telestaff and Kronos Link

- Schedule interface
- Person interface

## *Supply Chain Consumable Inventory*

- Operative IQ
- Will centralize medical supply inventory
- Better stock rotation

## *“V-Team Application for EOC Operations*

# Questions

