

VOLUSIA COUNTY PARKS & TRAILS



Downloadable application

Home Page/Main Menu

Category Indexes



Guidebooks
or “chapters”

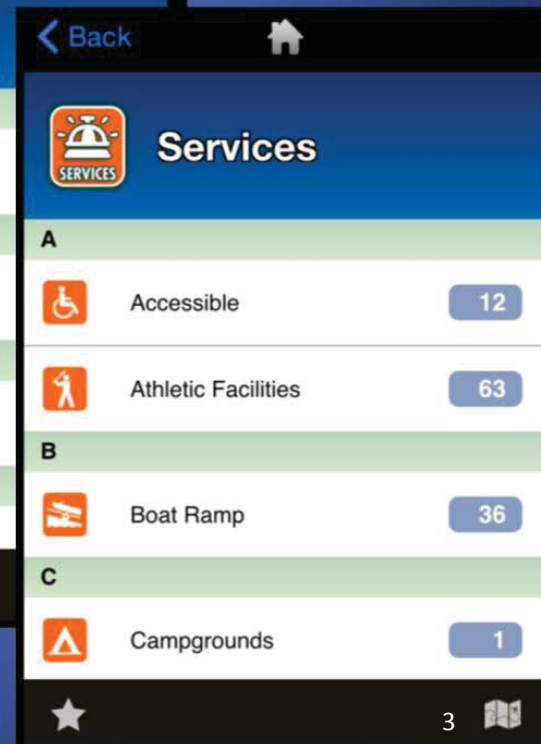
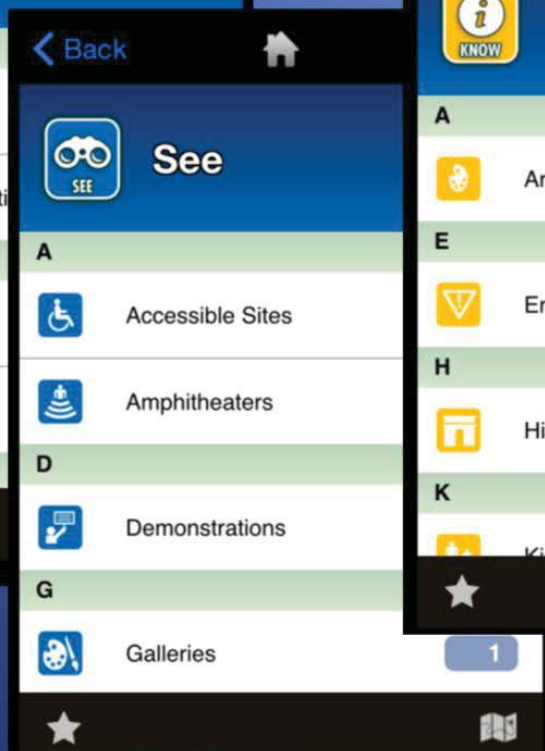
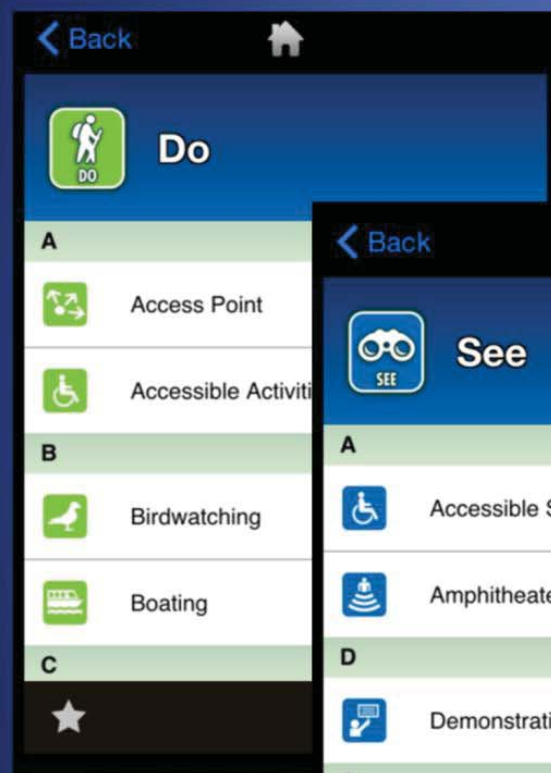
Category Indexes

Do

Know

See

Services



Guidebook Menu



Volusia Visitors Guide
highlights, tips & general info



Parks
beachfront to wilderness & heritage

"Back" goes to previous page

< Back

🏠 goes to main menu



Parks
beachfront to wilderness & heritage

Table of Contents

Beachfront Parks
some of Florida's best beaches



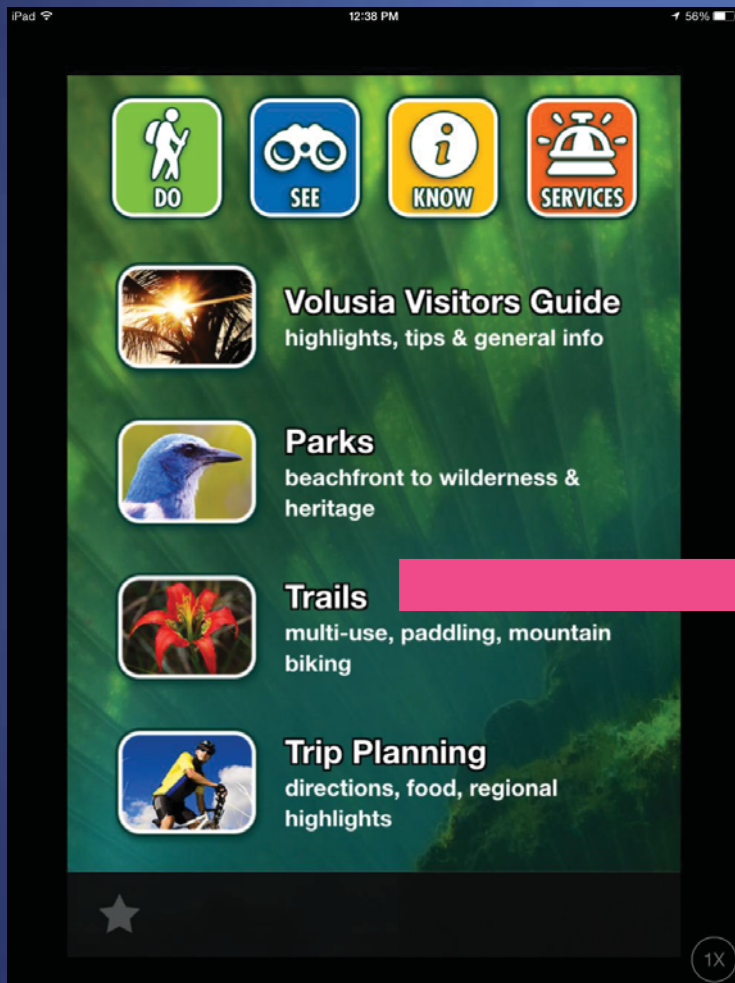
Ecological & Nature Parks
springs, nature parks, conservation areas



Sports Parks
complexes to skate parks



Trails



Trails

multi-use, paddling, mountain biking

Table of Contents

Showcase Trails

highlighted trails of Volusia



Multi-Use Trails

hiking, biking, equestrian



Paddling Trails

paddling is amazing in Volusia



Nature Trails

great hiking areas



Equestrian Trails

great riding spots

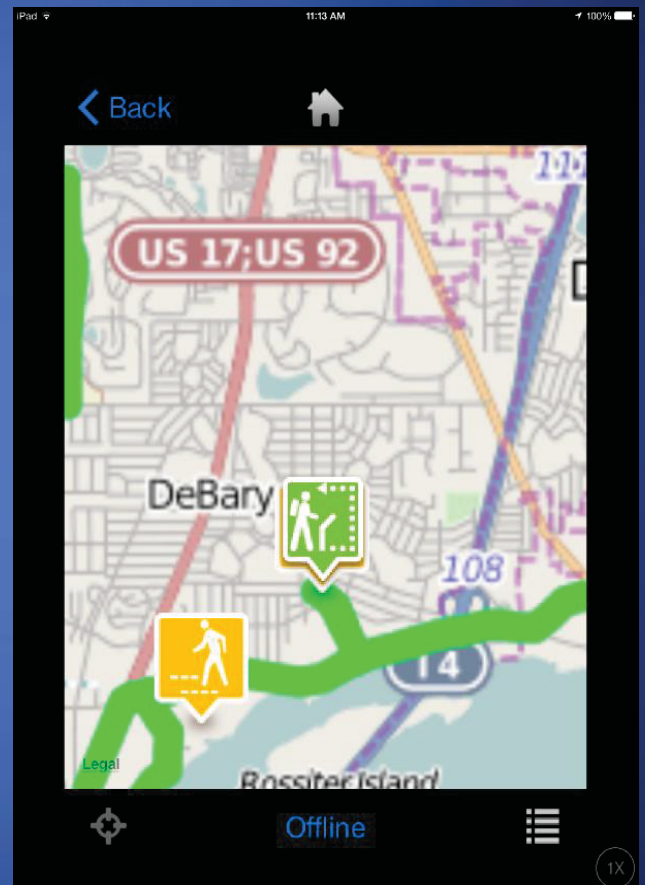
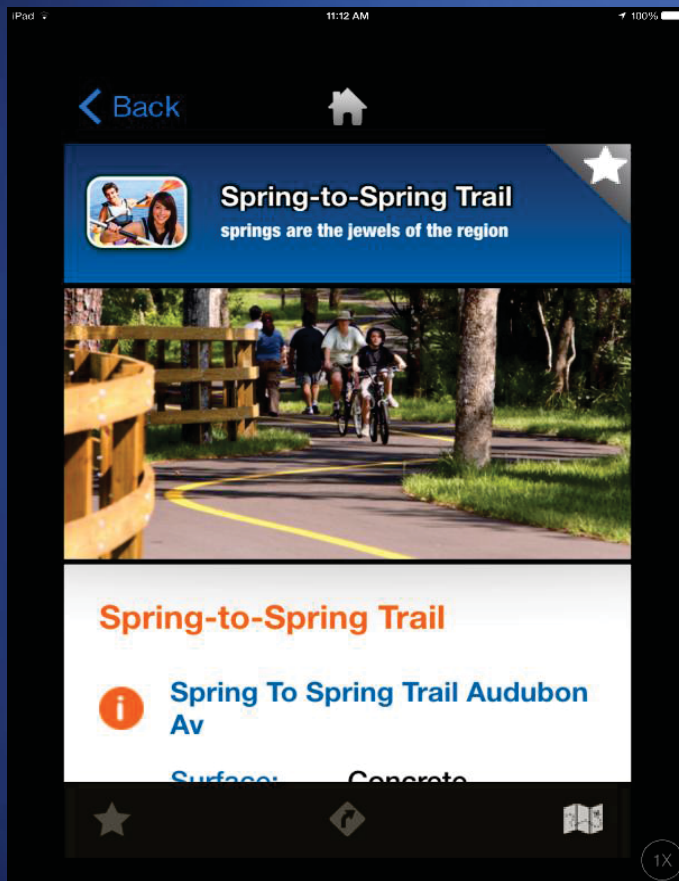


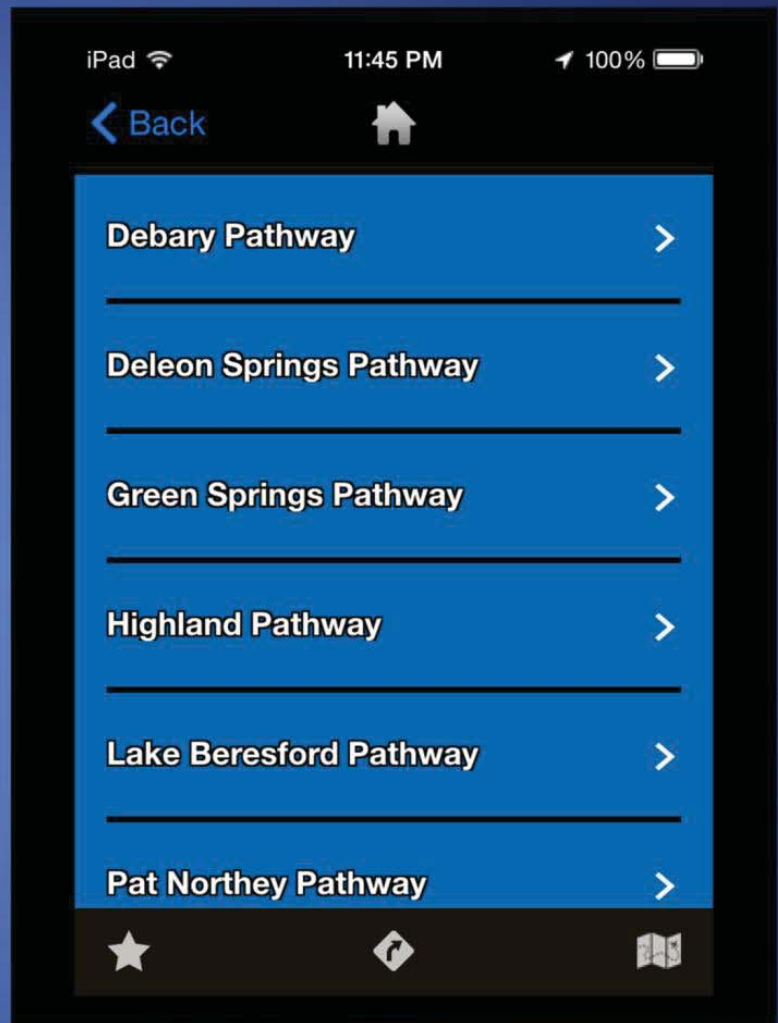
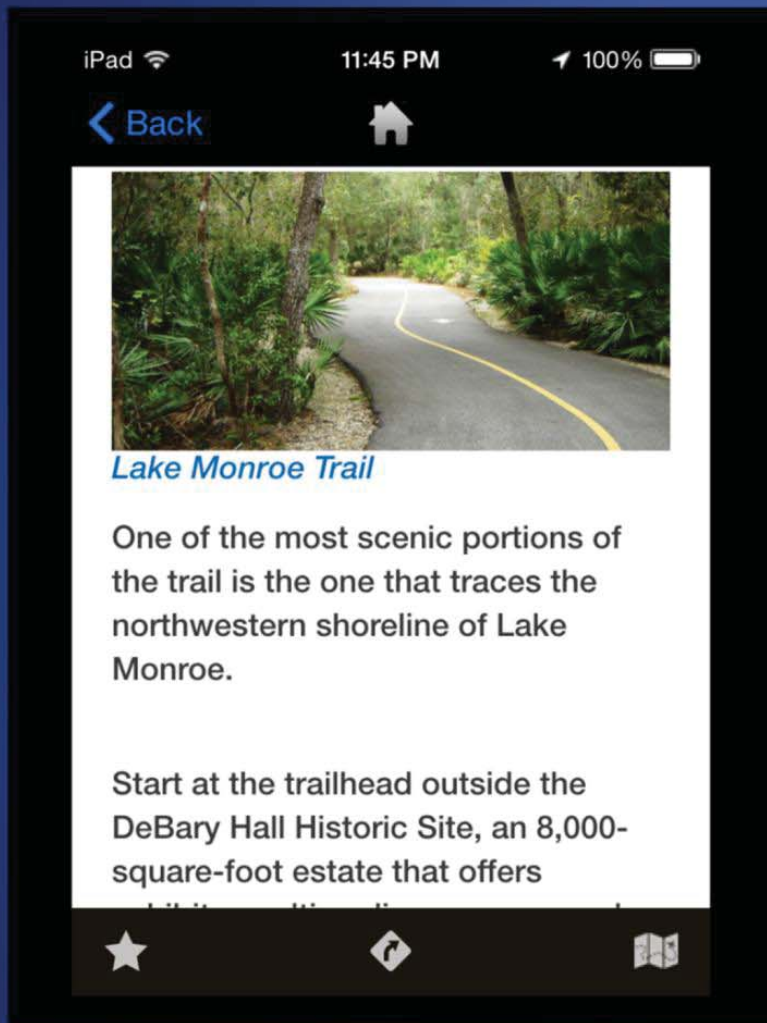
Cycling Trails

mountain biking, nature trails, multi-use

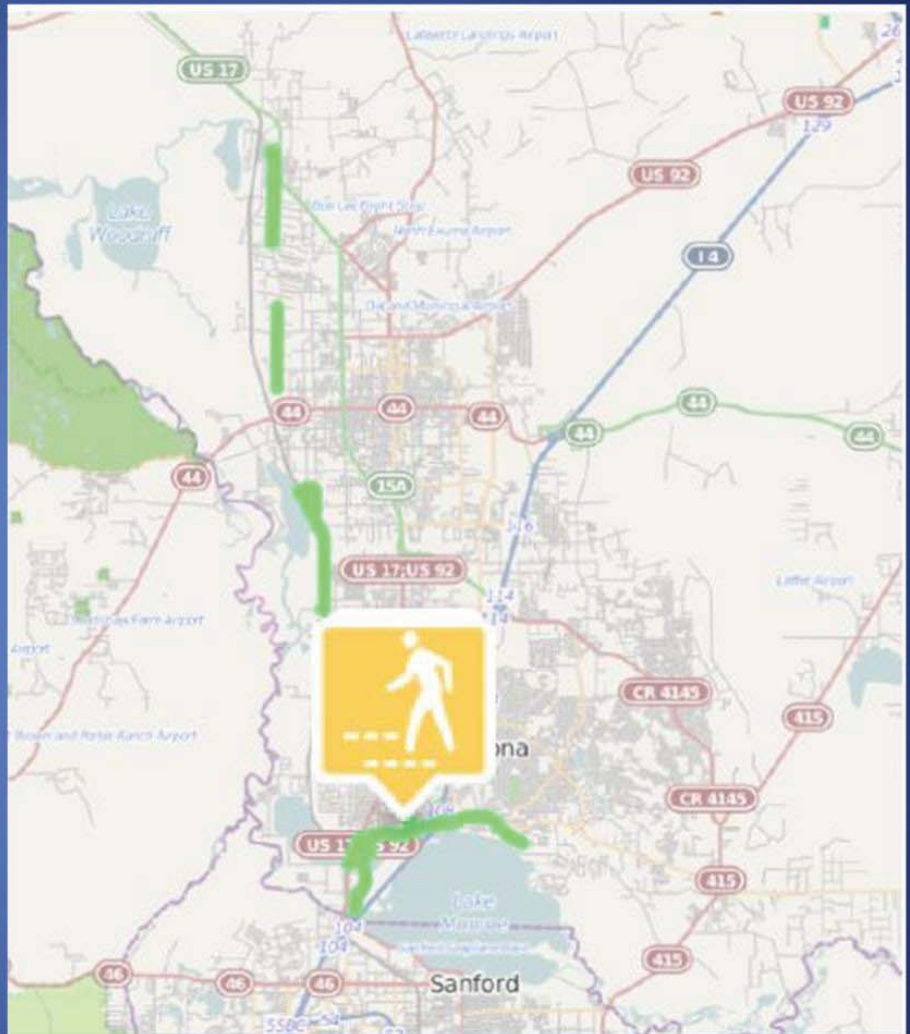


Showcase trails





Trails like the spring to spring trail
Show all segments at once.



Click the orange i button to expand the full listing for each trail.



Spring To Spring Trail Audubon Av

Surface: Concrete

Length: 0.1 miles



Spring To Spring Trail Charles R Beall Blvd

Surface: Concrete

Length: 0.7 miles



Spring To Spring Trail Audubon Av

Surface: Concrete

Length: 0.1 miles

Width: 4.0 feet

Type: Biking, Hiking

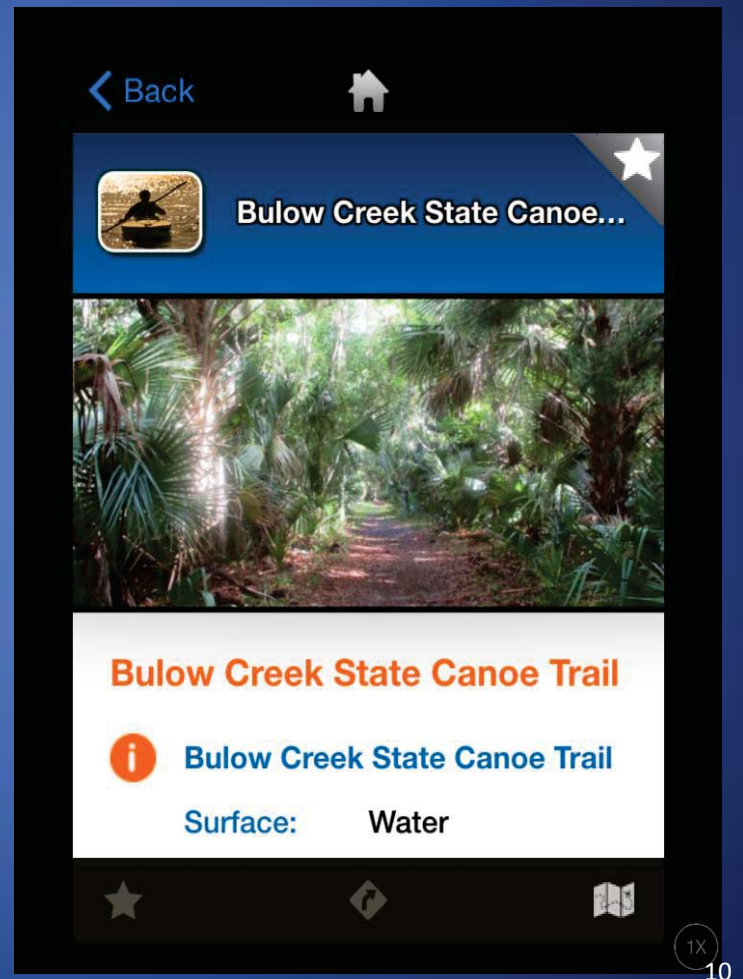
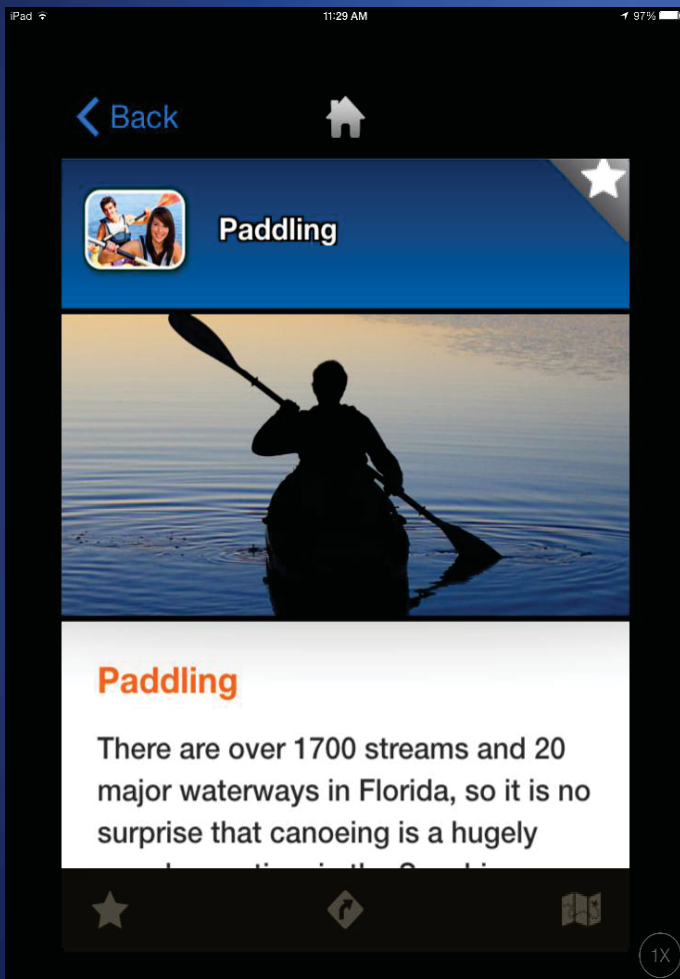


Spring To Spring Trail Charles R Beall Blvd

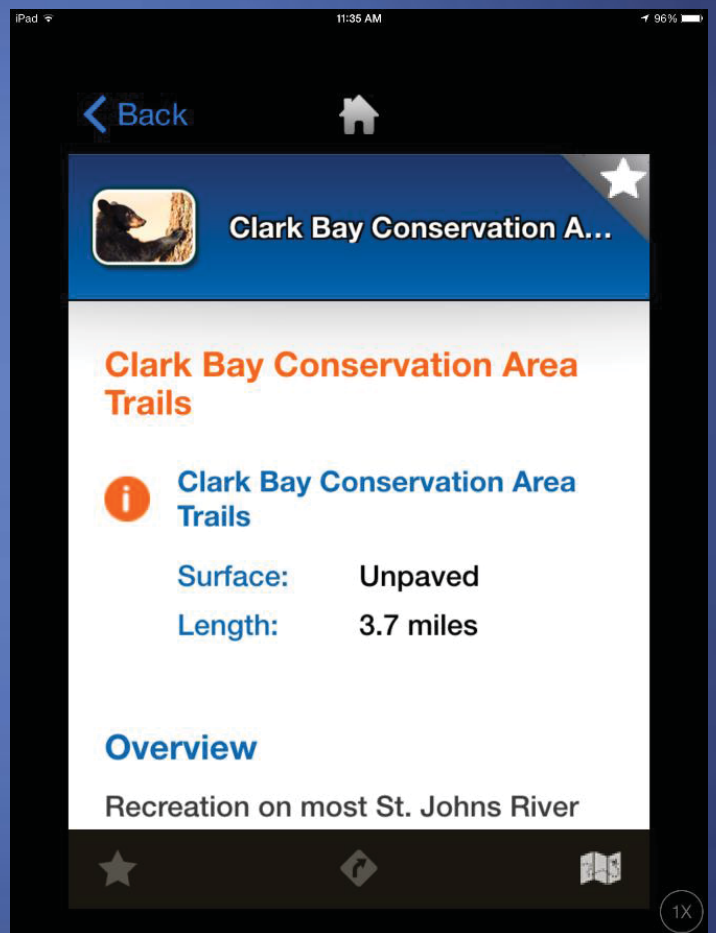
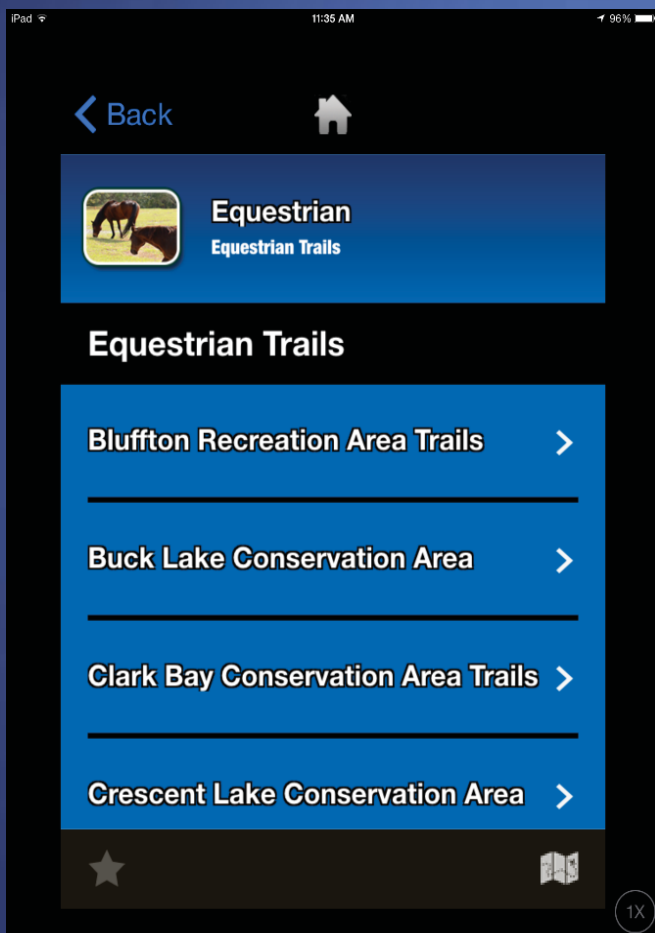
Surface: Concrete

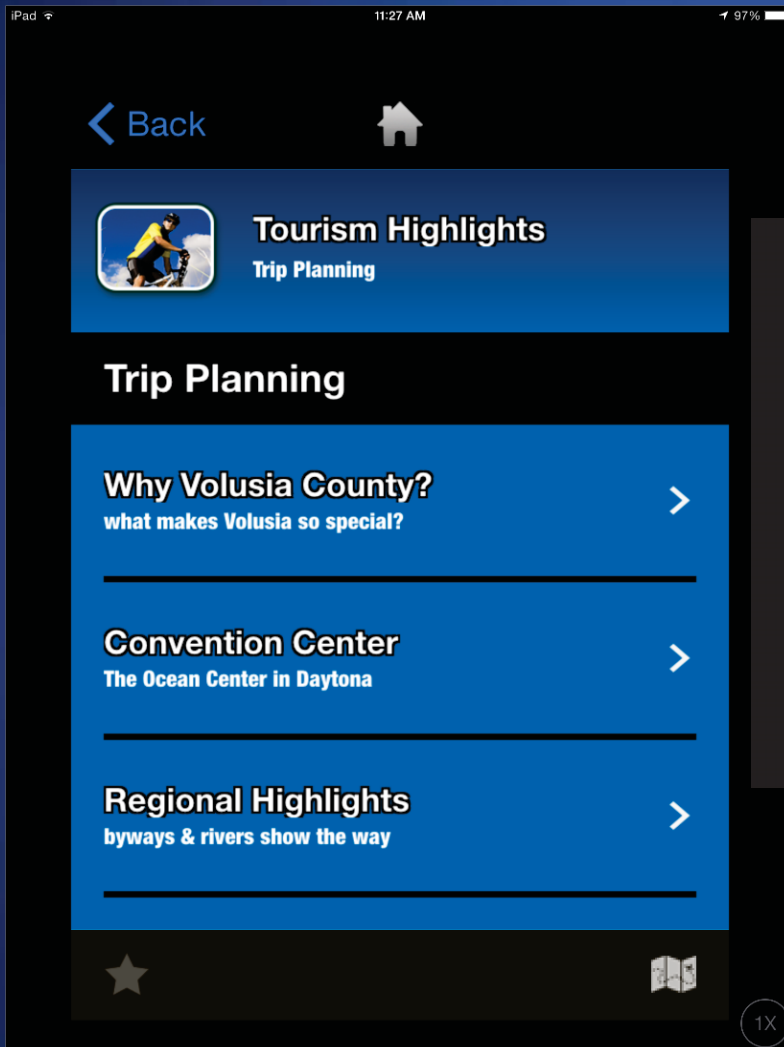
Length: 0.7 miles

Paddling trails



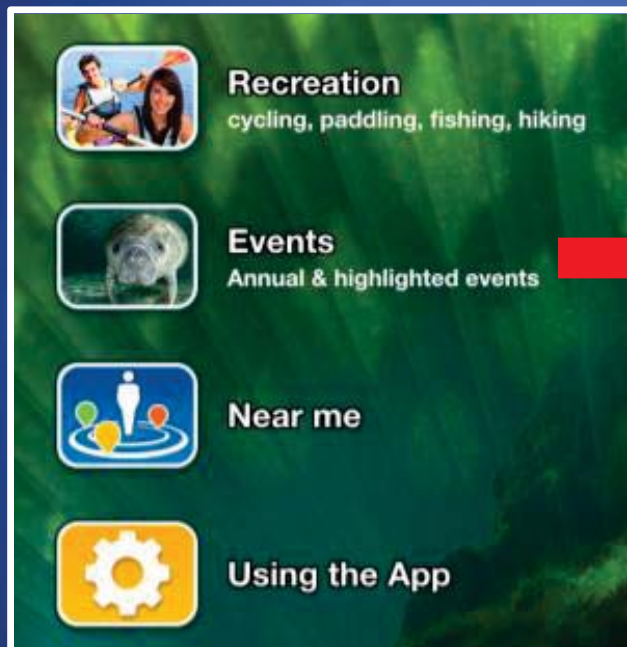
Equestrian trails





- Area scenic byways
- St. Johns River
- Near by beaches

Events





Near me



Volusia County

Parks & Trails

Nearest 25 places

Beck Ranch

19
mi.

Bulow Plantation Ruins Histo...

19
mi.

Lemon Bluff Boat Ramp

19
mi.

East Central Regional Rail Trail

built along the longest abandoned rail...

20
mi.

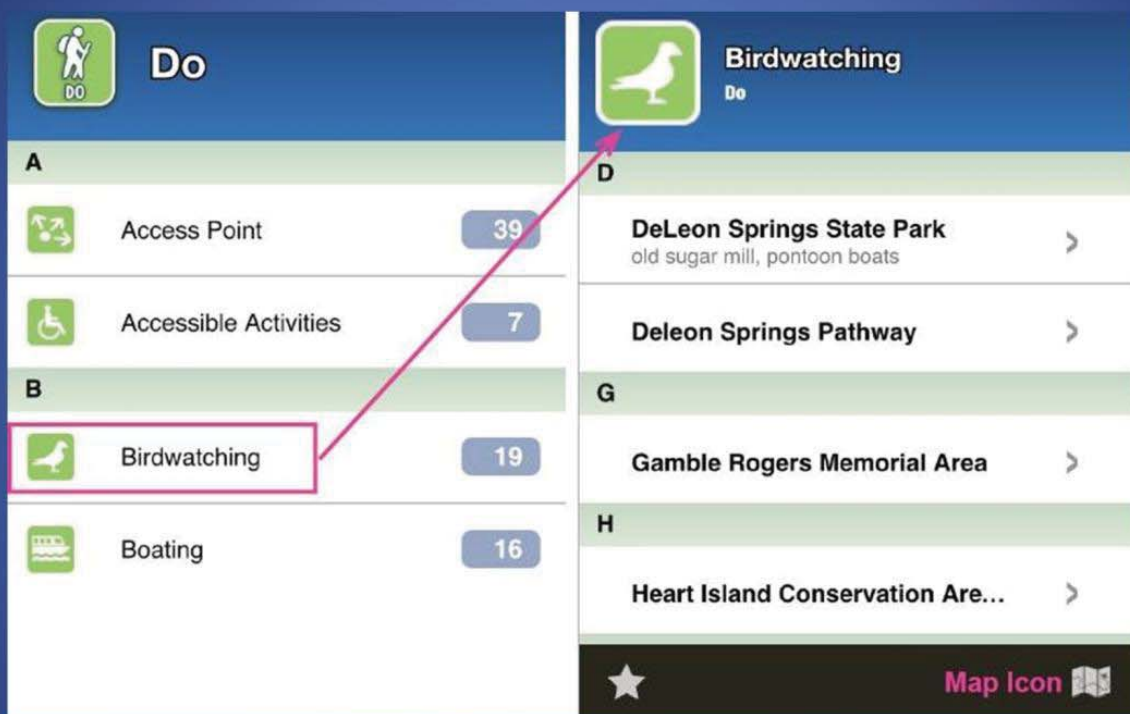
Beck Ranch Pathway

20
mi.



Alphabetized list under
“DO” Index

If we choose an item under “Do” we get a list
of related items from throughout the app.



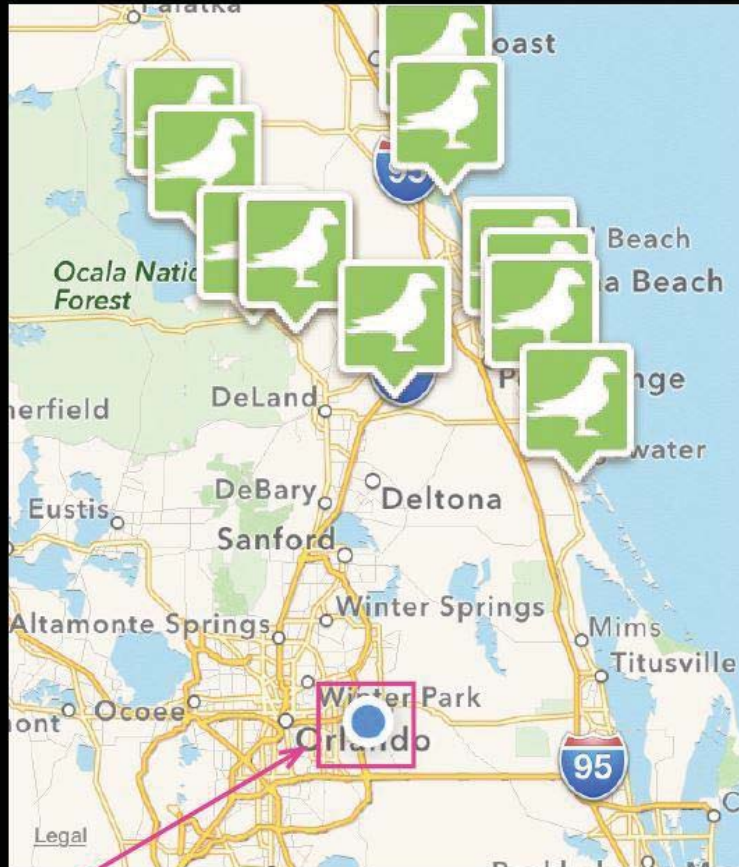
If you click on the map icon without selecting one item,
it will display all list items on the map.

"Back" goes to previous page

< Back



Home - goes to main menu

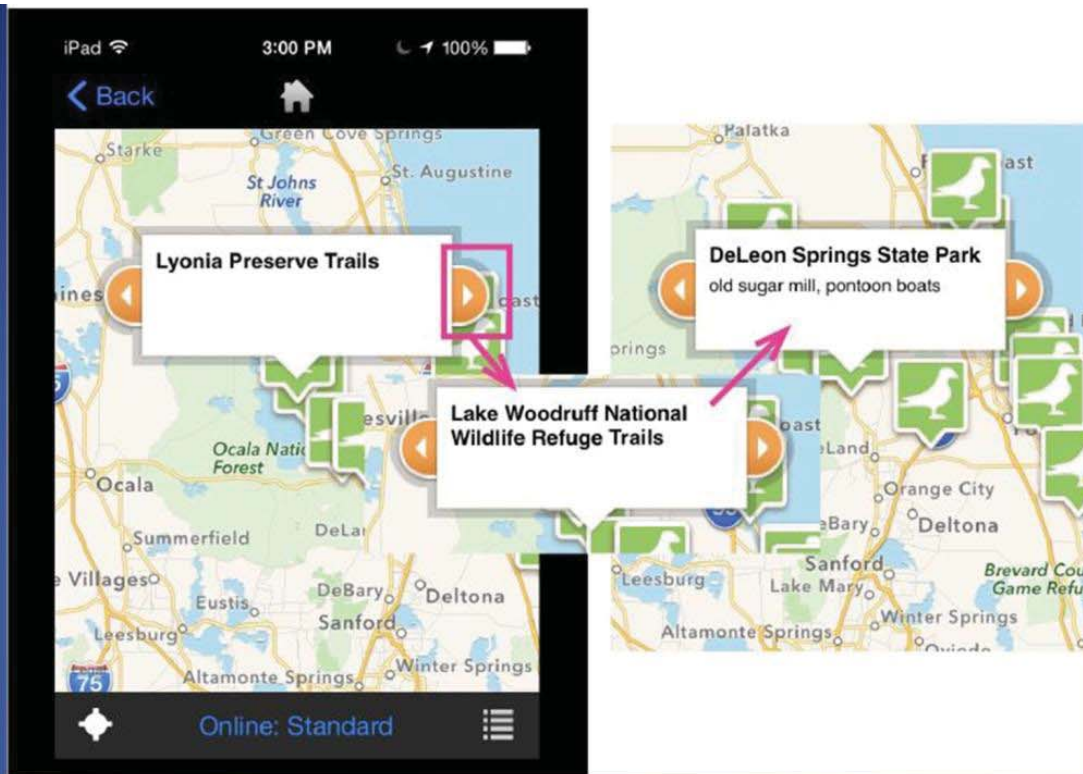


Online: Standard



Map icon changes to menu icon. This will allow you to toggle back to the list view of sites.

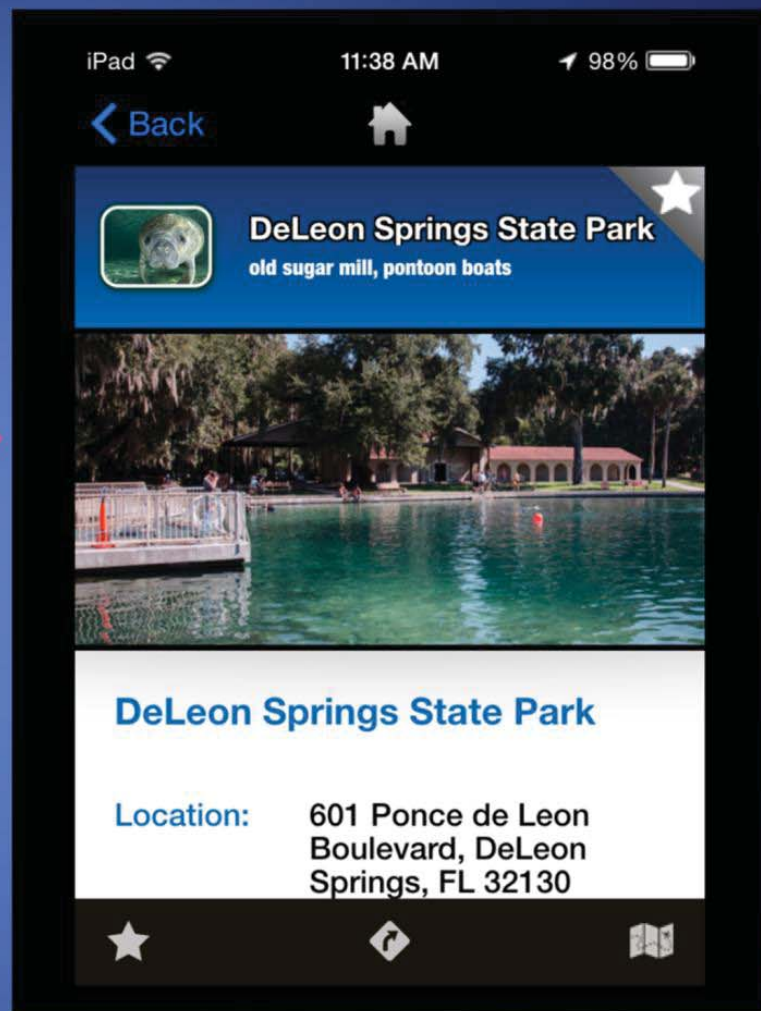
Clicking the crosshairs "around me" icon will show where you are in relation to other items on the map.

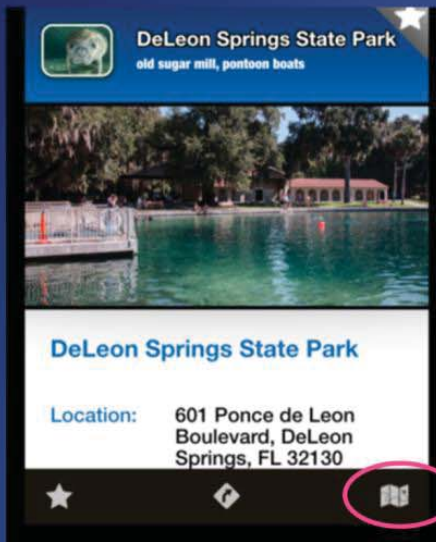


When you click on any of the icons on the map, you will get a box with the title of the place. You can toggle through all the locations using the orange buttons at either end of the box.



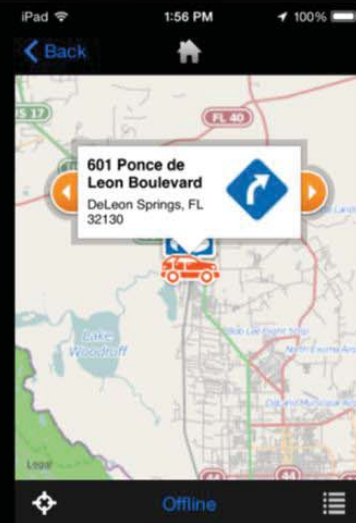
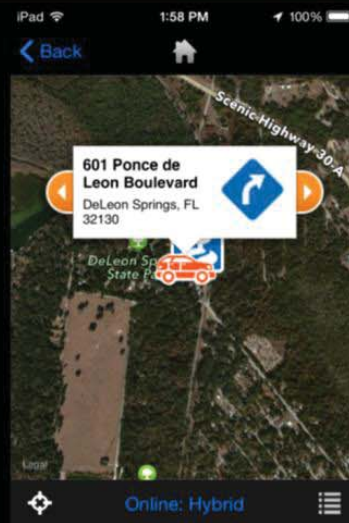
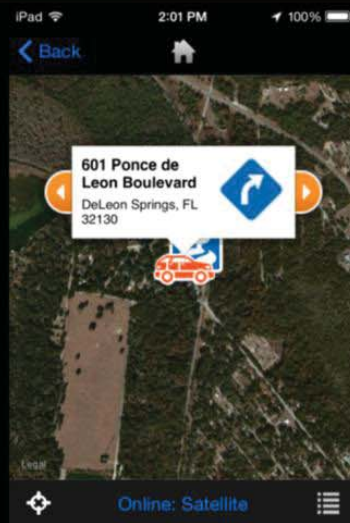
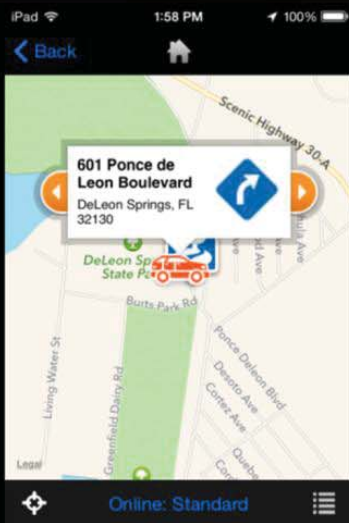
When you click on one of these
White info boxes, it will take you to the
Content item for that park or trail.

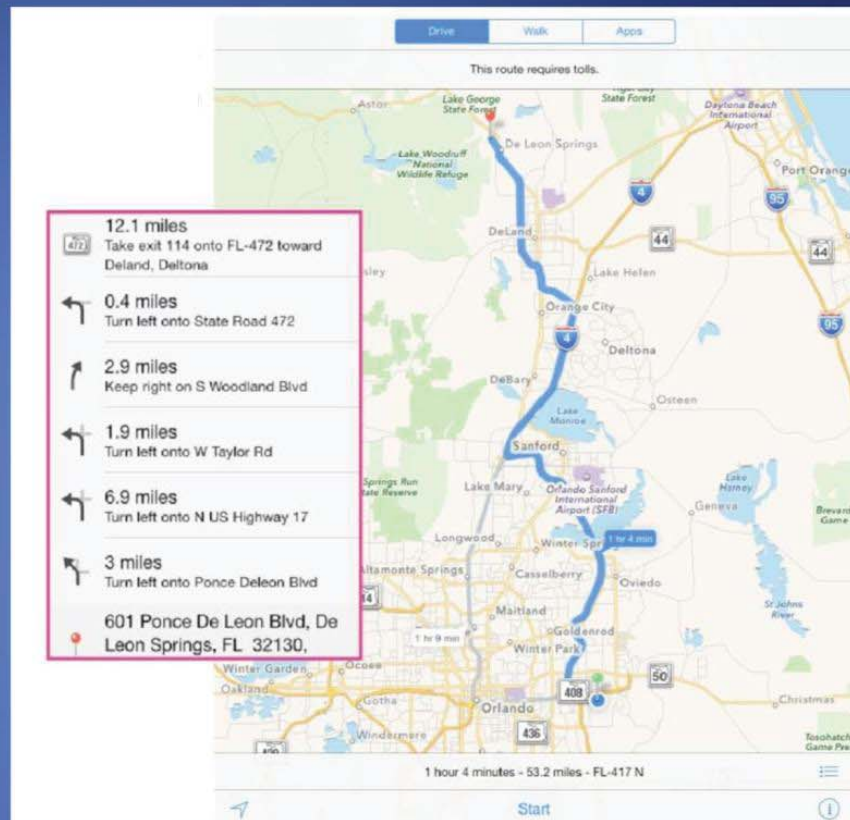
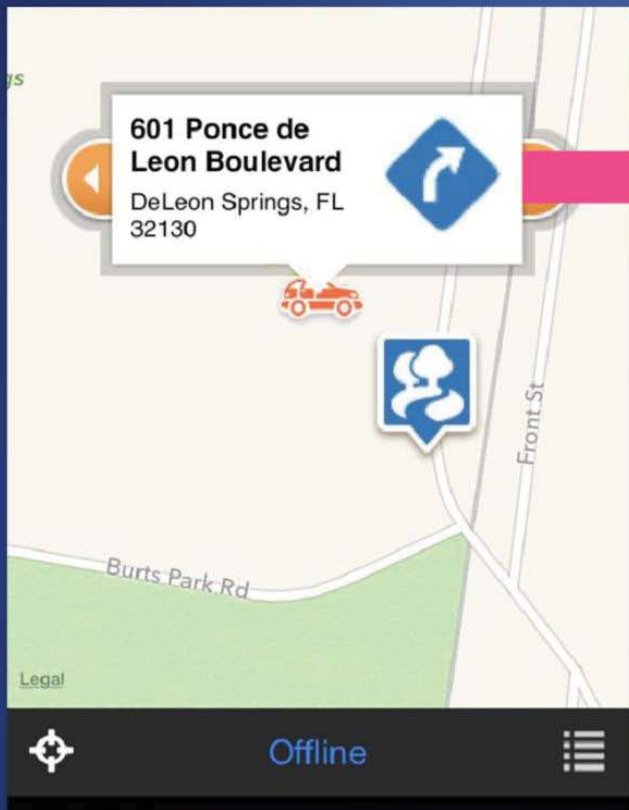




Once you are in a content item, clicking the map brings up a map featuring only that location.

In some cases there will be trailheads in more than one place, and in some there will be a little red car to indicate a good driving route.





Clicking on the box with an address will bring up directions.

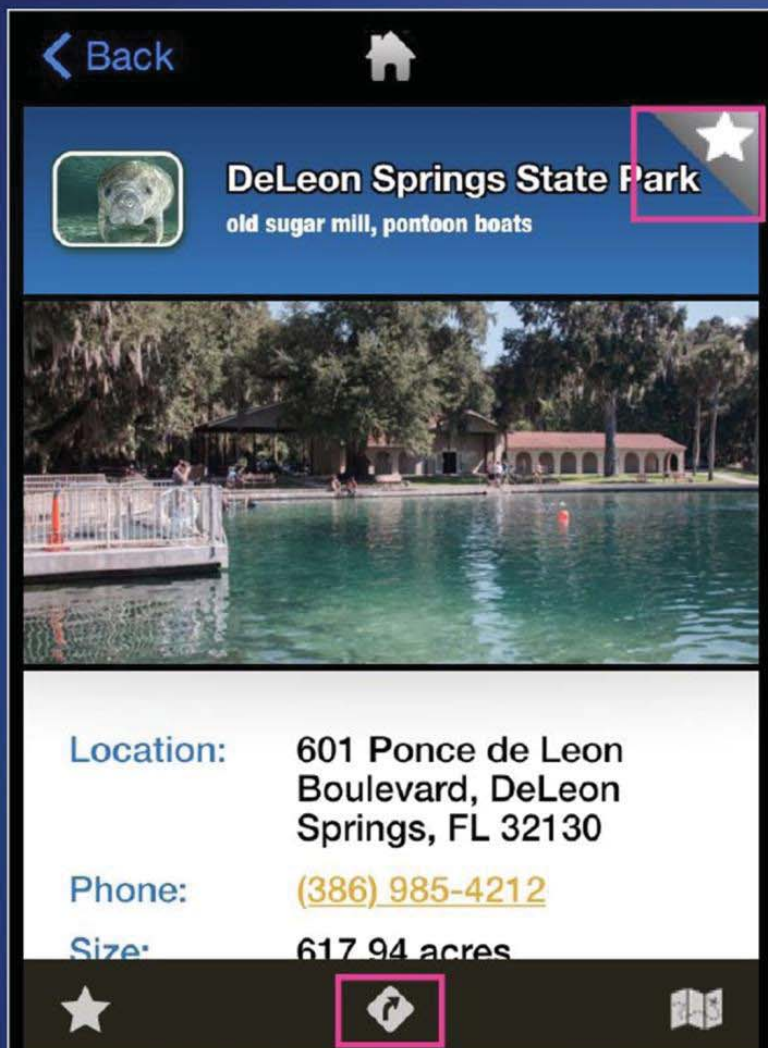
Parks-Trails-Excel_lowercase.xlsx

	Z	AA	AB	AC	AD	AE	AF	AG	AH	AI	AJ	AK
	X_Coord	Y_Coord	REF	RENTABLE	Details	Print_	Phone	SkatePark	DogPark	BoatRamp	Canoe	
1	-81.058967	29.333701	1	N		http://www.sportsvolusia.com/resource:386-248-8072	386-248-8072					
2	-81.34254	29.043339	2	N		http://www.sportsvolusia.com/resource:386-736-5953	386-736-5953		Yes			
3	-81.178053	28.822572	3	Y	http://maps1.vcgov.org/vc_par	http://www.sportsvolusia.com/resource:386-736-5953	386-736-5953		Yes			
4	-81.272366	29.032662	4	N		http://www.sportsvolusia.com/resource:386-736-5953	386-736-5953			Yes		
5	-81.075391	29.352412	5	N		http://www.sportsvolusia.com/resource:386-736-5953	386-736-5953				Yes	
6	-81.302038	29.169263	6	Y	http://maps1.vcgov.org/vc_par	http://www.sportsvolusia.com/resource:386-736-5953	386-736-5953			Yes	Yes	

	A	B	C	D	E	F	G	H	J	M	N	O
	REF	Name	Address	CityName	Zip	Type	Status	Restrooms	URL	X_Coord	Y_Coord	Trail_Ref T
1	49	Audubon Park	110 Lush Lane	Deltona	32738	Trailhead	Existing	No	http://www.deltonafl.gov/Pa	-81.200763	28.859704	12
2	1	Beck Ranch Park	751 S. State Road 415	Osteen	32764	Trailhead	Existing	Yes	http://www.volusia.org/servi	-81.176338	28.825749	1
3	125	Bulow Creek State Blueway	Walter Boardman Lani Flagler Beach		32136	CanoeLaur	Existing	No	https://www.floridastatepark	-81.121516	29.407651	302
4	6	Chuck Lennon Park	5000 Greenfield Dairy	DeLeon Springs	32130	Trailhead	Existing	Yes	http://www.volusia.org/servi	-81.36566	29.120246	5
5	40	Clark Bay Conservation Area	2592 Old Deland Road	Daytona Beach	32124	Trailhead	Existing	No	http://floridaswater.com/reci	-81.249633	29.075593	6
6	113	Cook Creek Blueway	Quay Assisi and Barrac New Smyrna Be		32169	CanoeLaur	Existing			-80.916749	29.036723	313
7	12	Crescent Lake Conservation Ar	616 Raulerson No 1 Rc	Seville	32190	Trailhead	Existing	No	http://floridaswater.com/reci	-81.469724	29.351625	12
8	39	De Leon Springs State Park	601 Ponce de Leon Bo	De Leon Springs	32130	Trailhead	Existing	Yes	https://www.floridastatepark	-81.361101	29.13259	46
9	3	DeBary Hall Historic Site	198 Sunrise Blvd	DeBary	32713	Trailhead	Existing	Yes	http://debaryhall.com	-81.297654	28.874996	53
10	28	Deep Creek Preserve	964 S. State Road 415	New Smyrna Be	32168	Trailhead	Existing	No	http://www.volusia.org/servi	-81.097625	28.951111	14
11	31	Doris Leeper Spruce Creek Pres	3251 N. Dixie Highway	New Smyrna Be	32168	Trailhead	Existing	No	http://www.volusia.org/servi	-80.954303	29.079381	20
12	32	Doris Leeper Spruce Creek Pres	1755 Martin's Dairy Rc	Port Orange	32127	Trailhead	Existing	No	http://www.volusia.org/servi	-81.001243	29.066942	20
13	33	Doris Leeper Spruce Creek Pres	6171 Ridgewood Ave	Port Orange	32127	Trailhead	Existing	No	http://www.volusia.org/servi	-80.969997	29.097106	20
14	34	Doris Leeper Spruce Creek Pres	2317 Creek Shore Trail	New Smyrna Be	32168	Trailhead	Existing	No	http://www.volusia.org/servi	-80.983965	29.076194	20
15	35	Doris Leeper Spruce Creek Pres	90 Divito Drive	Ne						-80.982277		20
16	51	Gemini Springs Addition	545 S Charles R Beall B	De						28.856532		53
17	100	Gemini Springs Blueway	37 Dirksen Drive	De						28.864808		303
18	4	Gemini Springs Park	37 Dirksen Drive	De						28.864268		23
19	2	Green Springs Park	994 Enterprise/Osteen Ent							28.862463		25
20	121	Halifax River Blueway	1933 S Palmetto Aveni Sou							29.175667		304
21	50	Hawks Park Recreation Comple	1108 S. Ridgewood Avi Edg							28.980352		27
22	13	Heart Island Conservation Area	6798 State Road 11	Pie						29.241884		28
23	14	Heart Island Conservation Area	6350 Lake Winona Ro	De						29.179502		28
24	15	Heart Island Conservation Area	945 State Road 40	Pie						29.20425		28
25	20	Heart Island Conservation Area	1999 US HWY 17	Pie						29.179294		28
26	42	Hickory Bluff Preserve	598 Guise Road	Ost						28.832087		29
27	103	Hontoon Dead River Blueway	2309 River Ridge Road	De						28.976003		305
28	104	Hontoon Dead River Blueway	2100 W French Avenue	Ora						28.94664		305
29	105	Hontoon Dead River Blueway	2100 Fatio Road	De						28.990182		305
30	5	Lake Beresford Park	2100 Fatio Road	DeLand	32720	Trailhead	Existing	Yes	http://www.volusia.org/servi	-81.337991	28.991471	32
31	30	Lake Beresford Park	1800 Fatio Road	DeLand	32720	Trailhead	Existing	No	http://www.volusia.org/servi	-81.336405	28.996526	32
32	10	Lake George Conservation Are	Barrs Road	Seville	32190	Trailhead	Existing	No	http://floridaswater.com/reci	-81.563377	29.340395	36
33	11	Lake George Conservation Are	Lake George Road	Seville	32190	Trailhead	Existing	Yes	http://floridaswater.com/reci	-81.540559	29.322731	36
34	8	Lake George Forest and Wildlif	998 Ninemile Point Ro	Seville	32190	Trailhead	Existing	Yes	http://www.volusia.org/grow	-81.543006	29.272338	34
35	9	Lake George Forest and Wildlif	698 Ninemile Point Ro	Seville	32190	Trailhead	Existing	No	http://www.volusia.org/grow	-81.526614	29.27269	34

Leverages our existing Parks, Recreation and Culture data and websites and additional GIS data.

This data will be updated by in-house staff, and staff will also be able to make updates to the application.



Click the star at the upper right to add this site to your favorites. This will add it to a favorites section you can access whenever you see the star at the bottom left on the screen. The triangle behind the star will turn from gray to blue.

Click the directions sign icon at the bottom center of any page to go straight to directions to the location from your current location.