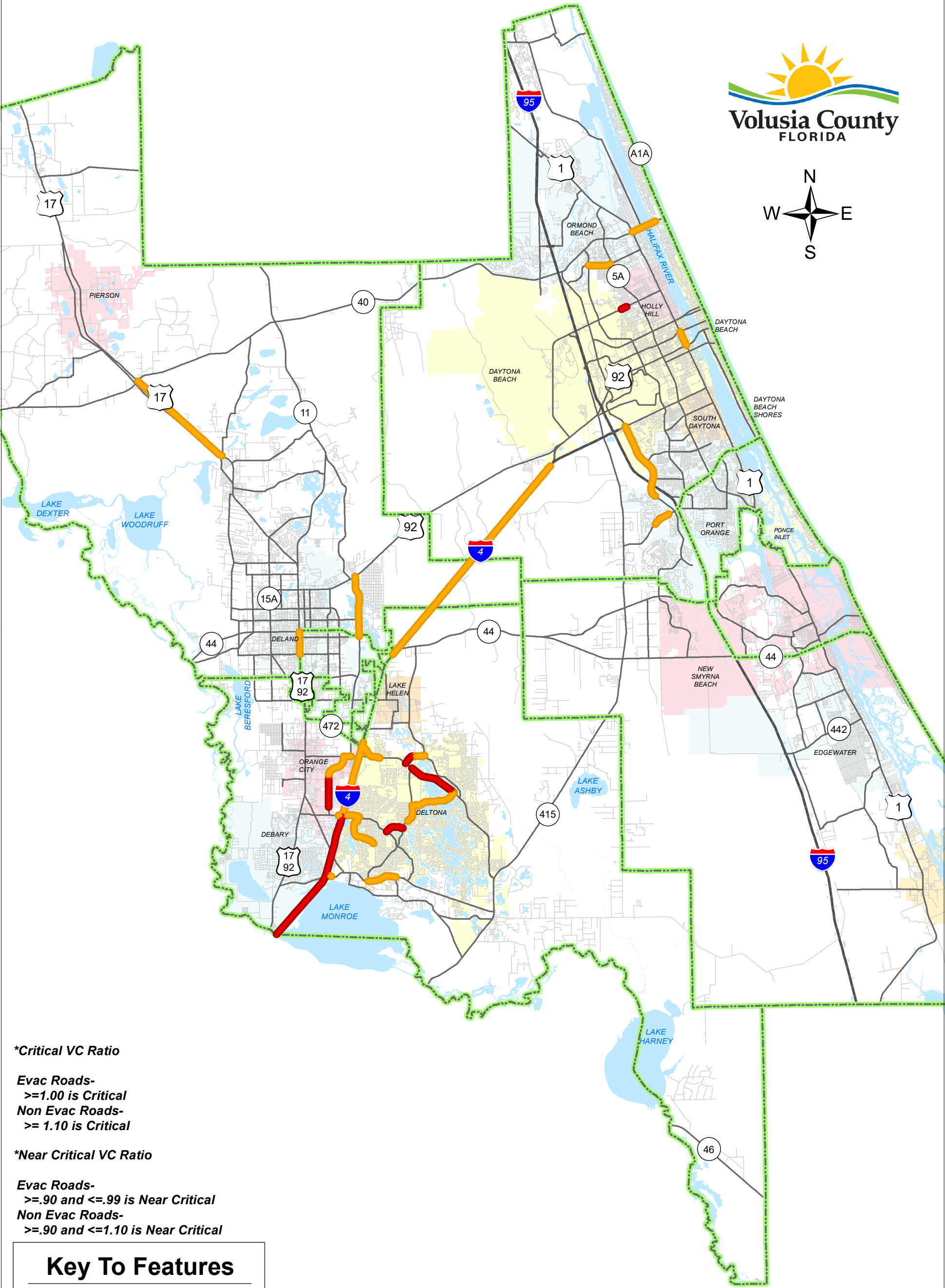
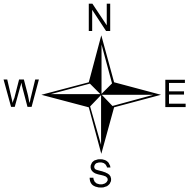


Level of Service 2015

Critical / Near Critical* State and County Roadways



***Critical VC Ratio**

Evac Roads-
>=1.00 is Critical
Non Evac Roads-
>= 1.10 is Critical

***Near Critical VC Ratio**

Evac Roads-
>=.90 and <=.99 is Near Critical
Non Evac Roads-
>=.90 and <=1.10 is Near Critical

Key To Features

- Critical
- Near Critical
- - - Impact Fee Zones