

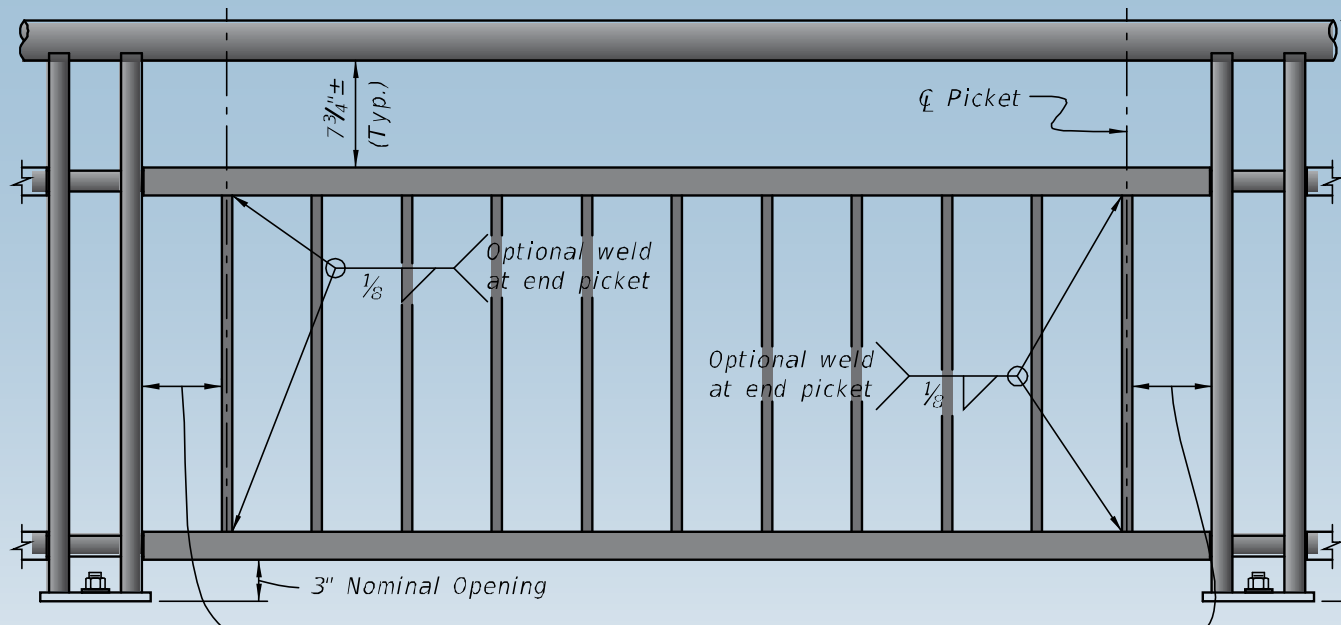
Veterans Memorial Bridge Replacement

PAC Meeting #11 - Minor Aesthetics



PAC MEETING #10 FOLLOW UP

- Railing Requirements
- Railing Options - Style & Color
- Railing Cost
- Coquina Wall Treatments
- Variable Textures/Patterns/Colors
- MSE Wall vs. Pier Treatment

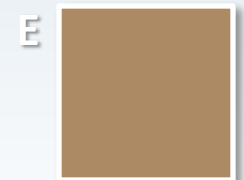




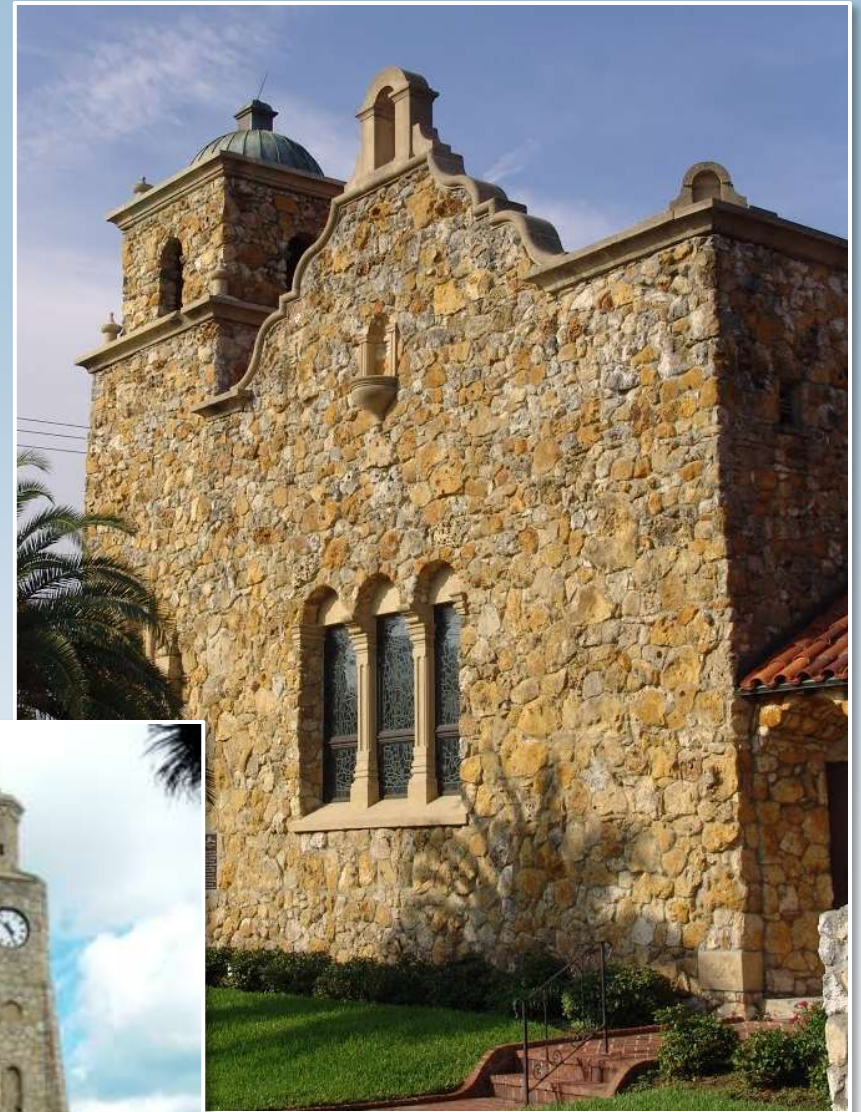
Coquina Stone



Varied Colors & Textures



Local Examples



Local Examples



Applications



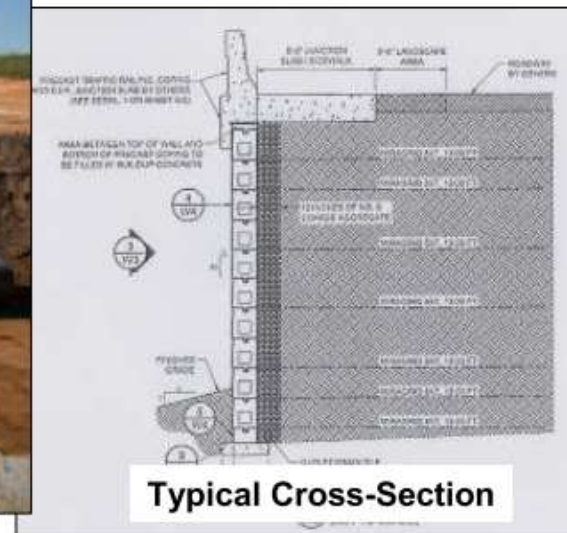
New Block Wall System

ACP, Inc.

Project Case Study



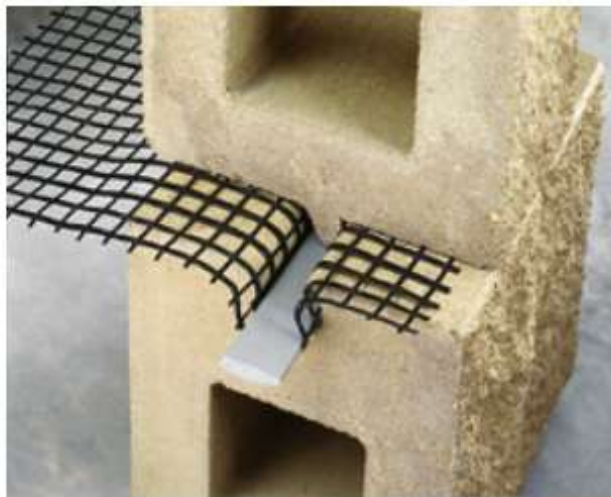
LANDMARK Retaining Wall System, for FDOT Applications



Project: Hooks Street Extension, Lake County, FL (Clermont, FL)

Contractor: Associated Construction Products (ACP), Inc. Lutz, FL

Details: Anchor's *Landmark Wall System*. 465lf x 14ft max height. Project was monitored & tested by FDOT, and used as pilot project to achieve statewide approval by Department for MSE & CIP wall applications.
Installed: Sept 2011



See anchorwall.com
for installation instructions.



**Landmark
Lock Bar**

Units

Approximate Dimensions*

Approximate Weight*

Coverage

Setback/System Batter

Full

15" x 8" x 12⁵/₈"
15" x 8" x 11⁷/₈"

85 lbs.

0.83 sq. ft.

1"/3.8°

Tapered Full

15" x 8" x 12⁵/₈"
15" x 8" x 11⁷/₈"

80 lbs.

0.83 sq. ft.

1"/3.8°



Units

Approximate Dimensions*

Approximate Weight*

Coverage

Setback/System Batter

Tapered Half-High

7¹/₂" x 8" x 12³/₁₆"
7¹/₂" x 8" x 11¹³/₁₆"

50 lbs.

0.42 sq. ft.

1/2"/3.8°

Foundation

7¹/₂" x 8" x 11³/₄"

48 lbs.

0.42 sq. ft.

0"



Units

Approximate Dimensions*

Approximate Weight*

Coverage

Corner

Front, 7¹/₂" x 17¹/₂" x 9"
Back, 7¹/₂" x 17¹/₂" x 9"

87 lbs.

1.41 sq. ft.



Cap

3³/₄" x 17¹/₄" x 10³/₈"
3³/₄" x 11" x 10³/₈"

43 lbs.

1.18 lin. ft.

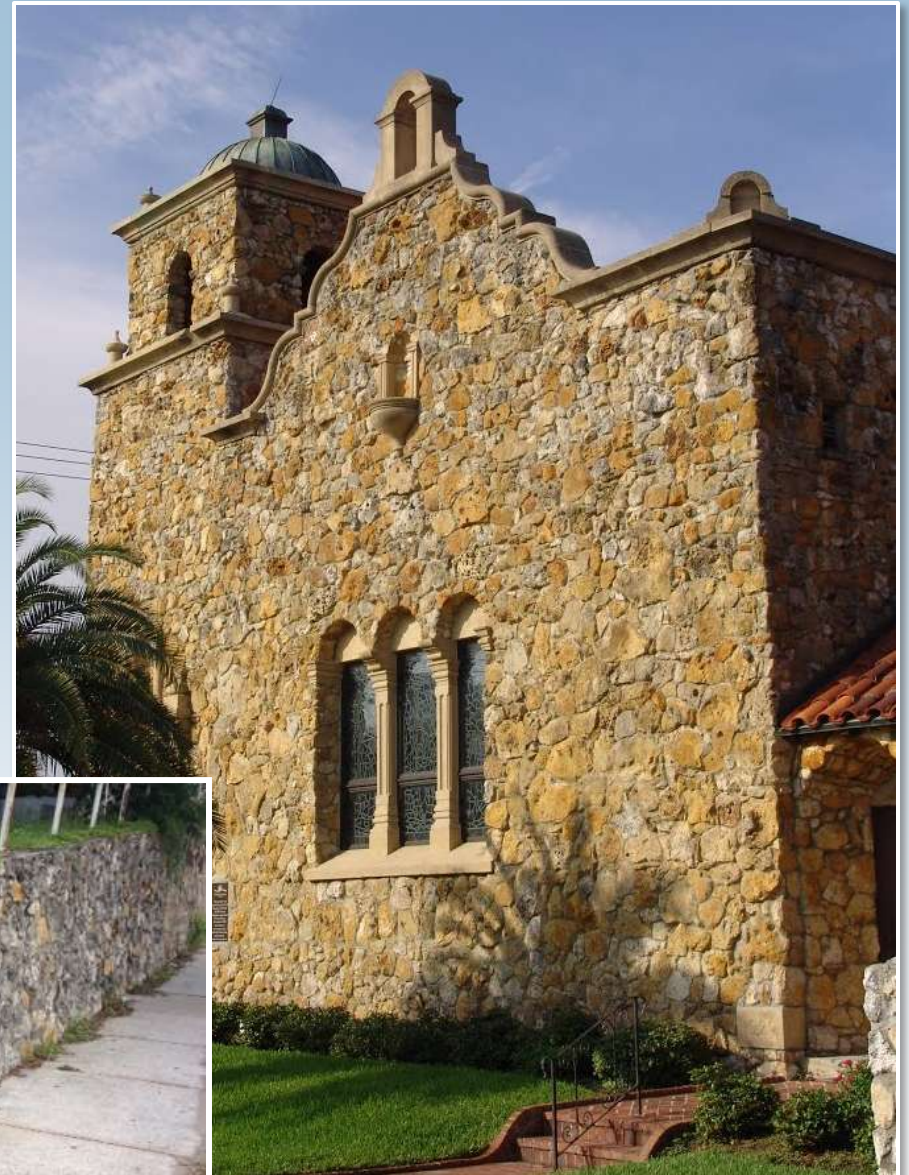
Color Options



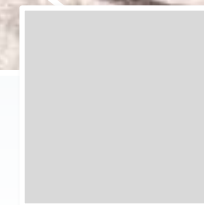
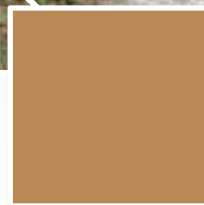
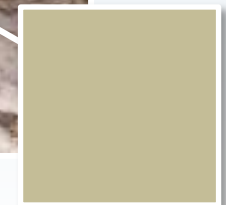
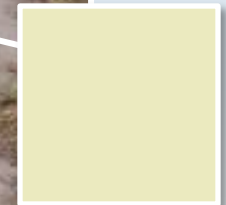
Color Options Selected



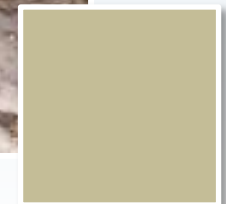
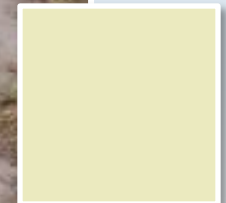
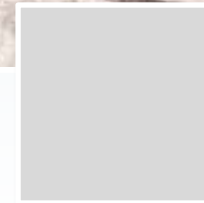
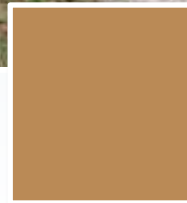
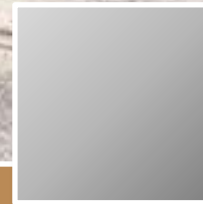
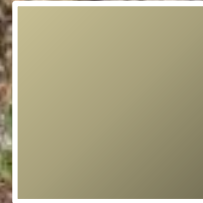
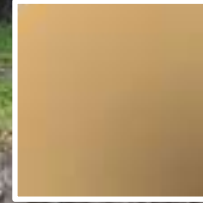
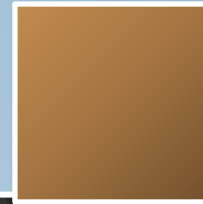
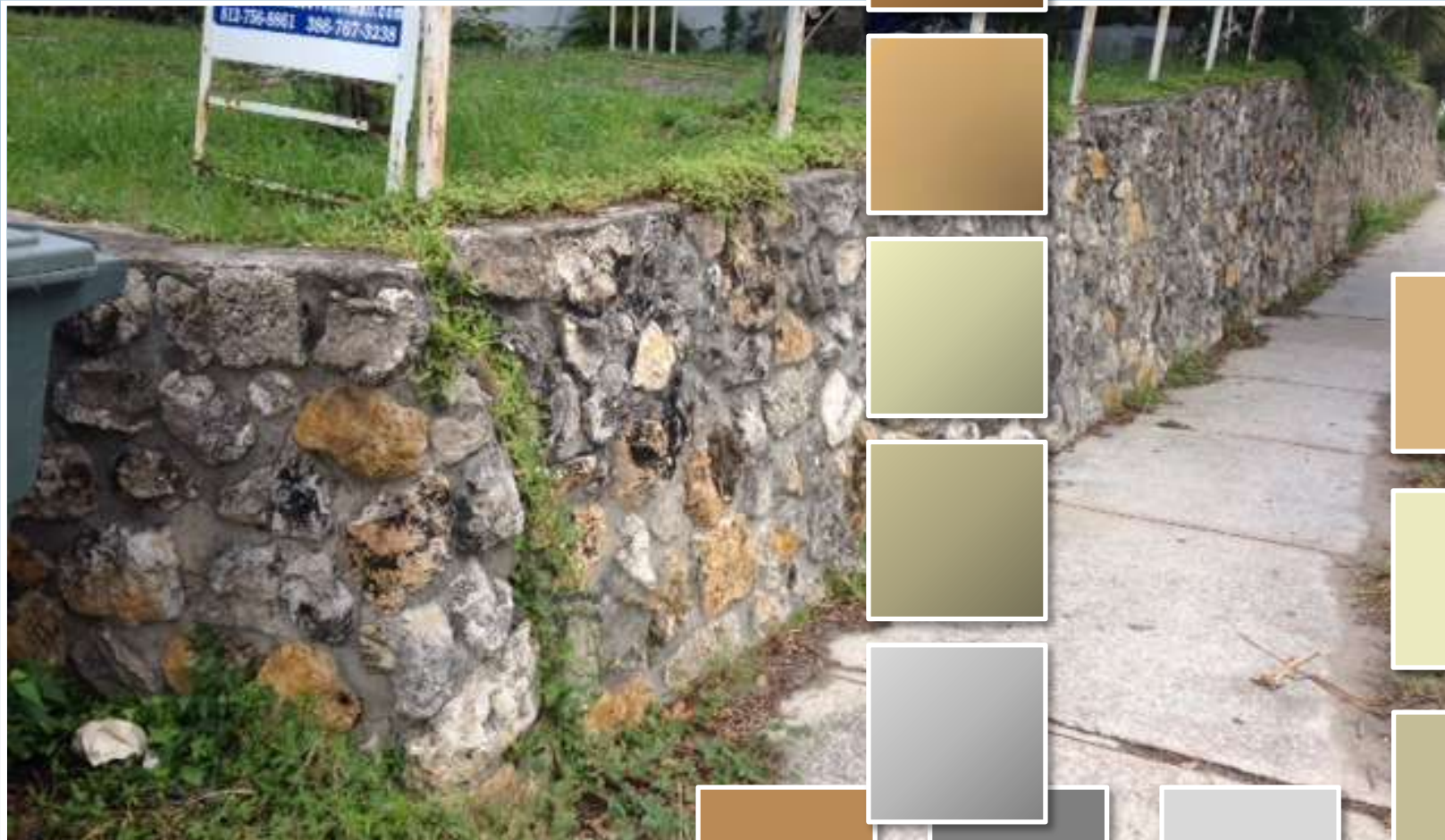
Local Examples



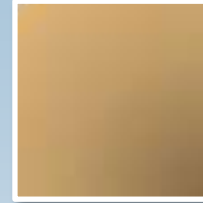
Local Examples



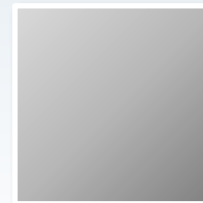
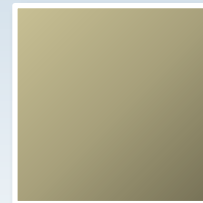
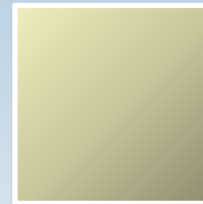
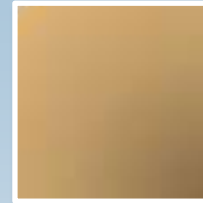
Local Examples



Combine Color Palette



Product - Eldorado Stone



Variations in Pattern



Stacked



Rough Stacked

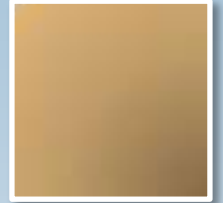


Block Stack

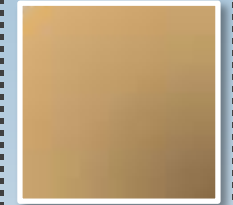


Rubble

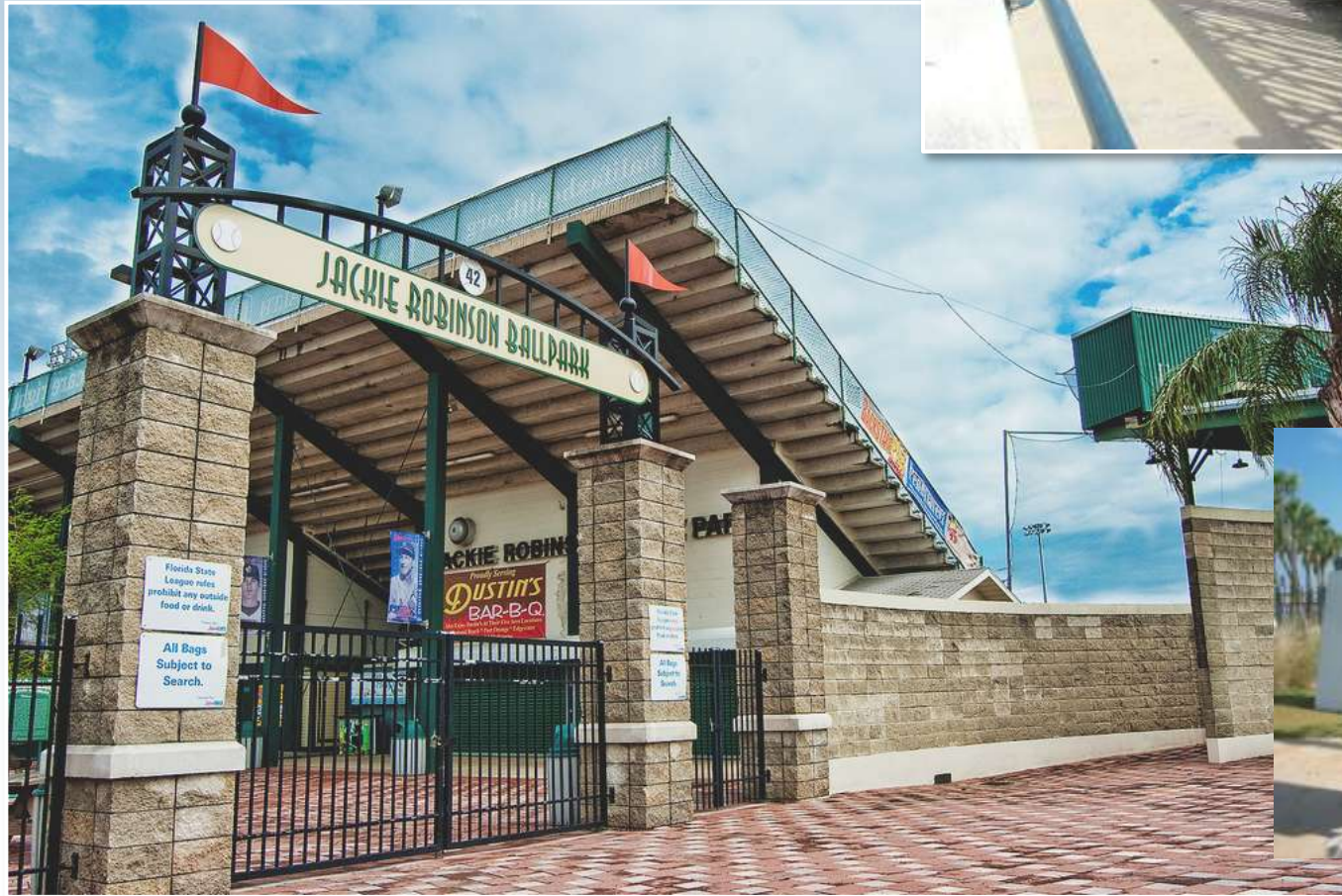
Combination A



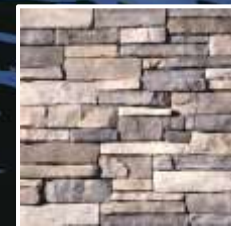
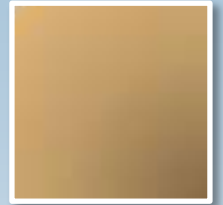
Combination B



Possible Accent Color



Combination C



OVERLOOK MEMORIAL PLAQUES

- 26 Overlooks
- Laser Etched Granite Plaques
- Each Plaque Details a US conflict
- All Plaques would include:
 - Etched Image
 - Description of Conflict, and Outcome
 - Number of KIA, WIA, MIA, Volusia Soldiers
 - QR Code that links to additional data
 - Braille Plate with Conflict Description

Vietnam War

1964 - 1975



Following a series of aggressions by North Vietnam, including attacks on US forces in the Gulf of Tonkin, the US Congress authorized the deployment of U.S. forces for warfare against North Vietnam. Beginning in 1964, US forces gradually grew to a peak of over 500,000 in the spring of 1968.

(Continued at next overlook)

Total Active U.S. Military	3,403,000
Killed in Action	47,434
Volusia County KIA	45
Wounded in Action	153,303
Missing in Action	1,652
Volusia County MIA	1

U.S. Military Forces in Vietnam
The Vietnam War was a conflict between
the United States and North Vietnam.
The war began in 1964 and ended in 1975.
The war was a result of the Vietnam War.
The war was a result of the Vietnam War.