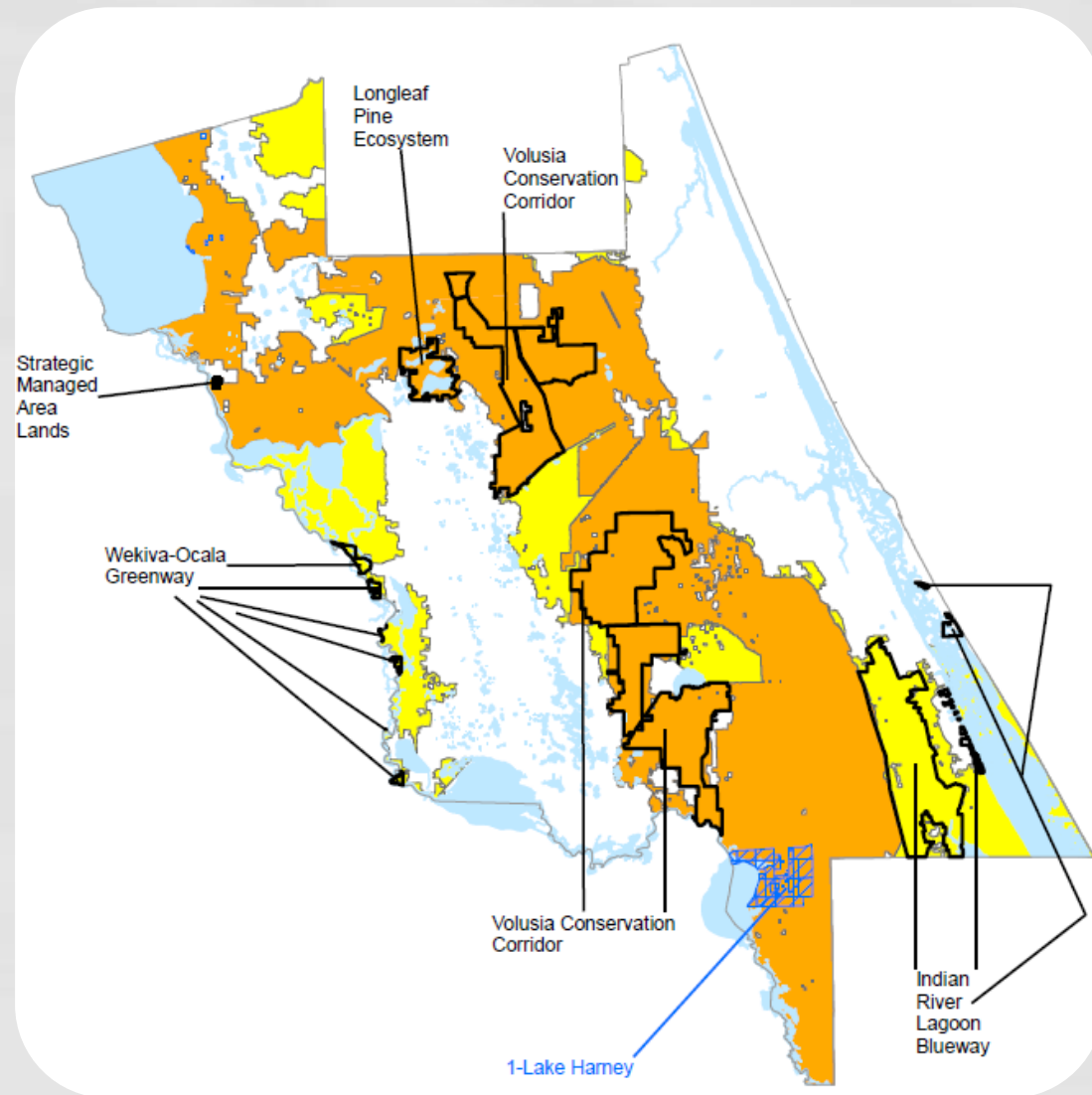


Lake Harney Volusia County



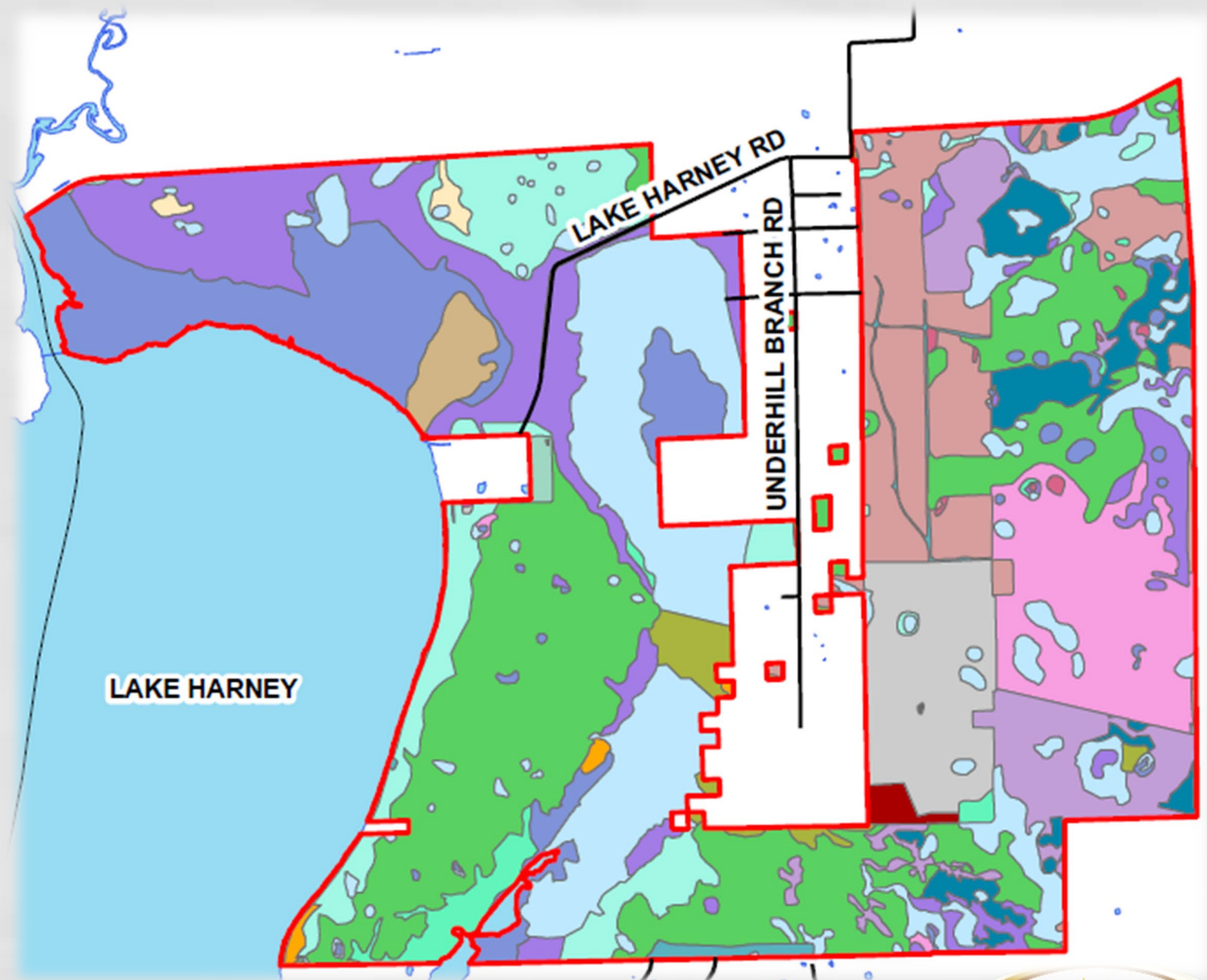
Location

- Located within the Florida Wildlife Corridor.
- Contiguous with Deering Preserve which is already managed by Volusia County.
- Adjacent to other private conservation parcels.



Habitat

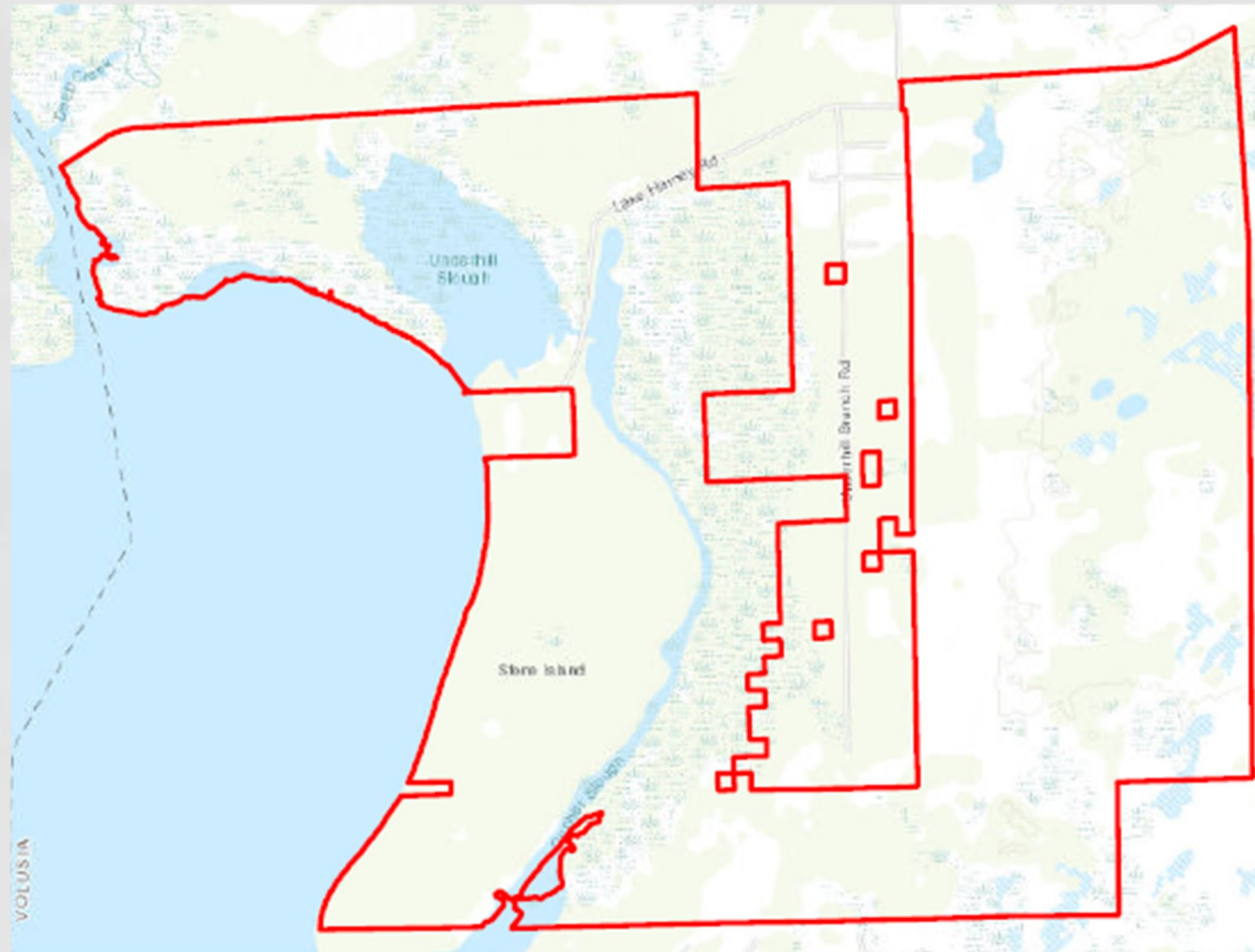
Habitat	Acreage
Artificial Impoundment/Reservoir	0.7
Cabbage Palm	18.31
Cabbage Palm Hammock	13.24
Coniferous Plantations	455.03
Cypress	975.18
Field Crops	14.54
Floating/Emergent Aquatic Vegetation	0.42
Hydric Pine Flatwoods	262.5
Improved Pasture	269.74
Isolated Freshwater Marsh	8.58
Lacustrine	64.22
Marshes	544.63
Mesic Flatwoods	1184.6
Mixed Hardwood-Coniferous	20.92
Mixed Hardwood-Coniferous Sqamps	386.49
Mixed Scrub-Shrub Wetland	648.21
Mixed Wetland Hardwoods	64.15
Riverine	0.16
Rural Open	40.55
Rural Structures	1.79
Sand Beach (Dry)	10.14
Shrub and Brushland	186.64
Transportation	7.36
Unimproved Woodland Pasture	0.4
Wet Flatwoods	352.49
Wet Prairie	78.19



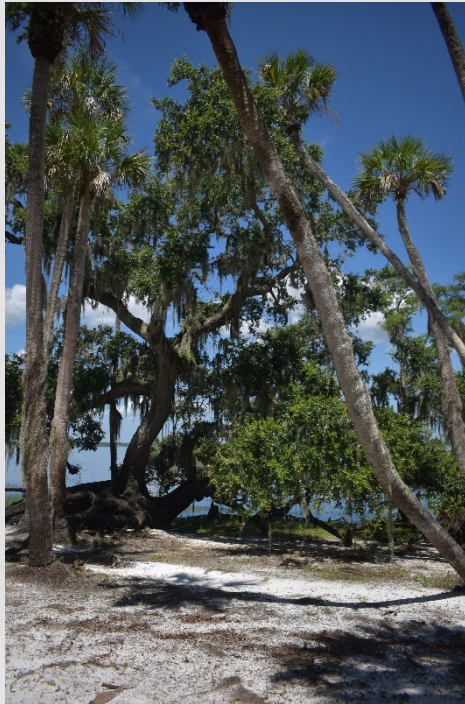
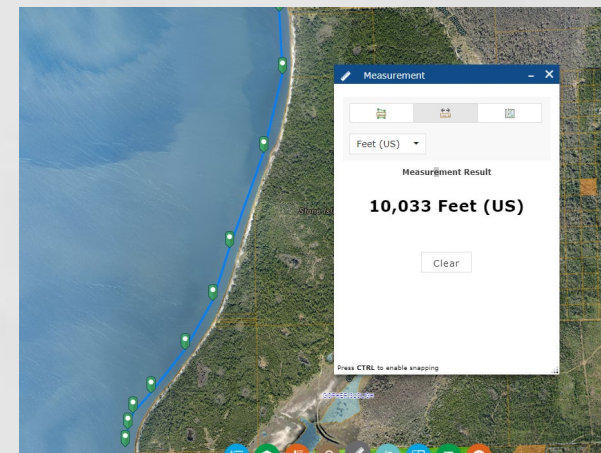




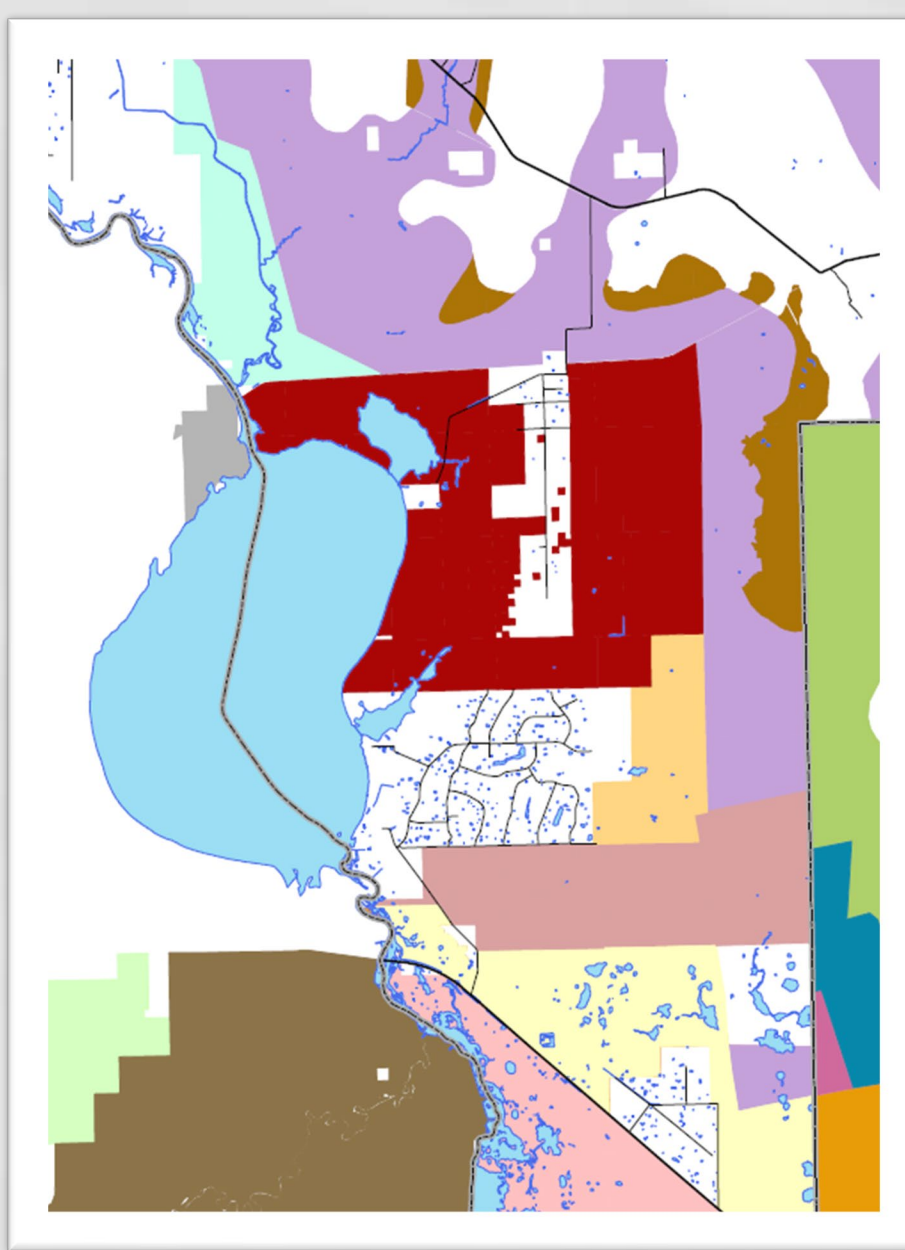
Waterfront



Unique Property Feature



8 Regional Conservation



Name	Acres
Double Eagle*	990 acres
Buck Lake Conservation Area	2,844 acres
Colber-Cameron Mitigation Bank	2,623 acres
Deering Preserve at Deep Creek	1,385 acres
Farmton Greenkey	30,599 acres
Farmton MRBOS	1,568 acres
Seminole Ranch Conservation Area	7,387 acres
TOTAL	47,396 acres

*Ranked #20 on 2023 Rural and Family Lands Protection Program



Land Management

- Volusia Forever ad valorem set aside 15% of revenue for land management.
- Volusia County currently manages over 38,000 acres across 10 different properties.
- Passive recreational uses allowed – 78 miles of trails and 7 campsites.



The End

