

Water Quality TMDLs and BMAPs in Volusia County

Adopted BMAPs:

North Indian River Lagoon

<http://www.dep.state.fl.us/water/watersheds/docs/bmap/north-IRL-bmap.pdf>

Wbid 2963F

Located at US1 in Oak Hill near Turnbull Creek south to the county line.

Impairment: Nutrients [Total Nitrogen (TN) & Total Phosphorus (TP)]

Lake Harney, Lake Monroe, Middle St. Johns River

<http://www.dep.state.fl.us/water/watersheds/docs/bmap/harney-monroe-bmap-final.pdf>

http://www.dep.state.fl.us/water/tmdl/docs/tmdls/final/gp2/donuttmdl-msjr_final.pdf (TMDL)

Wbids 2964, 2964A, 2893C, 2893D, 2893E, 2893F

Located at Lake Harney from US46 north and west to the just south of the Wekiva River convergence at the St. Johns River.

Impairment: Nutrients (TN & TP) and Dissolved Oxygen (DO)

Adopted TMDLs:

Halifax River

<http://www.dep.state.fl.us/water/tmdl/docs/tmdls/final/gp5/halifax-river-nutr-tmdl.pdf>

Wbid 2363B

Located just south of the Tomoka Basin south to Bellvue Rd.

Impairment: Total Nitrogen (TN)

Spruce Creek

http://www.dep.state.fl.us/water/tmdl/docs/tmdls/final/gp5/spruce-creek_nut_do.pdf

Wbid 2674A

Located from the Spruce Creek Fly In east to the Intercoastal Waterway

Impairment: TP and DO

Spruce Creek

http://www.dep.state.fl.us/water/tmdl/docs/tmdls/final/gp5/spruce-creek_fecal.pdf

Wbid 2674

Located from the Spruce Creek Fly In west and south to US44.

Impairment: Fecal Coliforms

Draft TMDLs:

Blue Spring and Blue Springs Run

<http://www.dep.state.fl.us/water/tmdl/docs/tmdls/draft/gp2/VolusiaBlueSpgTMDL.pdf>

Wbids 28933 and 28933A

Located from the Blue Spring boil to the convergence with the SJR.

Impairment: Nitrate (NO₃)

Tomoka River

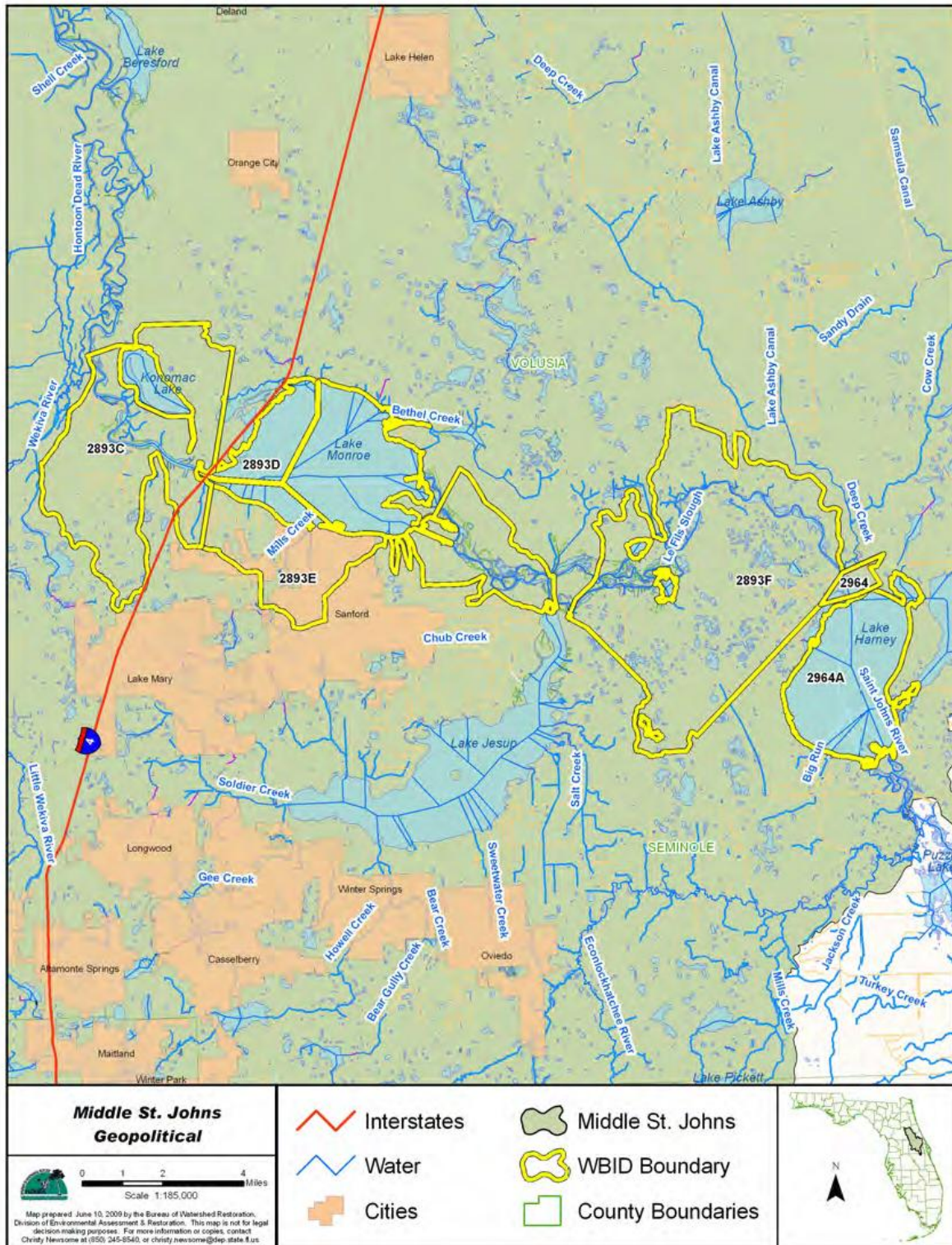
<http://www.dep.state.fl.us/water/tmdl/docs/tmdls/draft/gp5/tomoka-river-nutr-tmdl.pdf>

Wbid 2634 fresh water

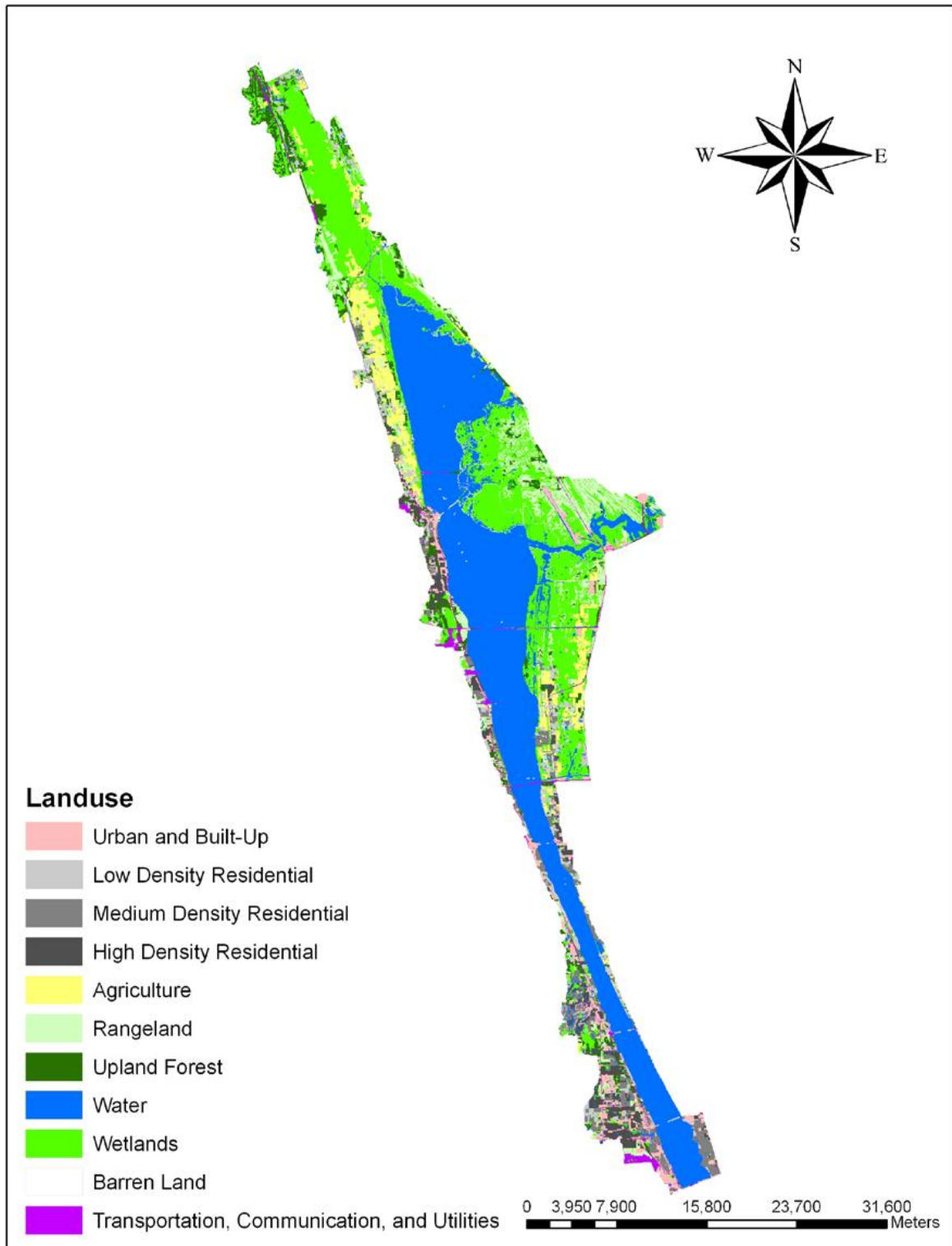
Located along the Tomoka from Nova Rd. west and south to Shunz Rd.

Impairment: Nutrients (TN & TP)

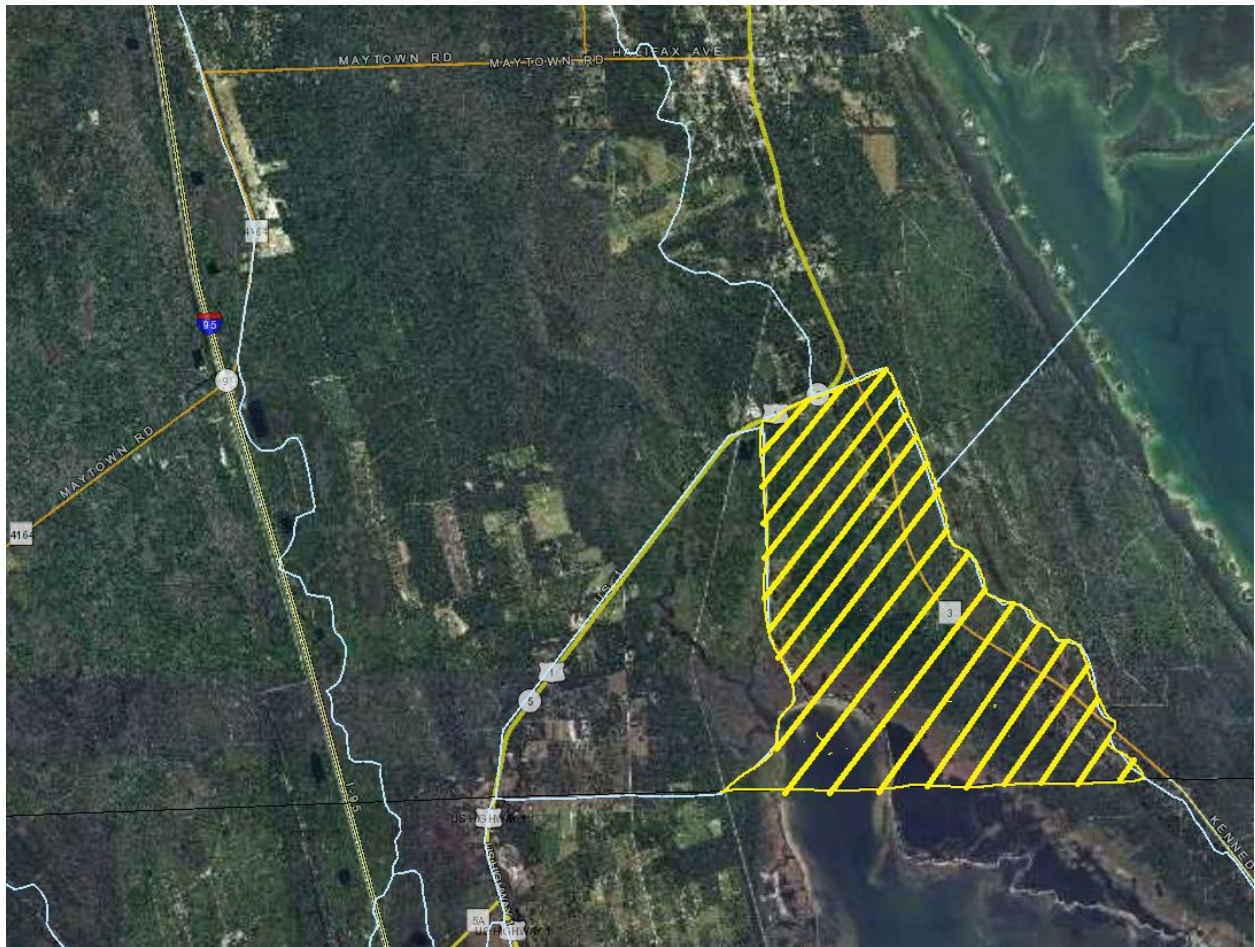
Lake Harney, Lake Monroe, Middle St. Johns River adopted BMAP for Nutrients [Total Nitrogen (TN) and Total Phosphorus (TP)] and Dissolved Oxygen (DO)



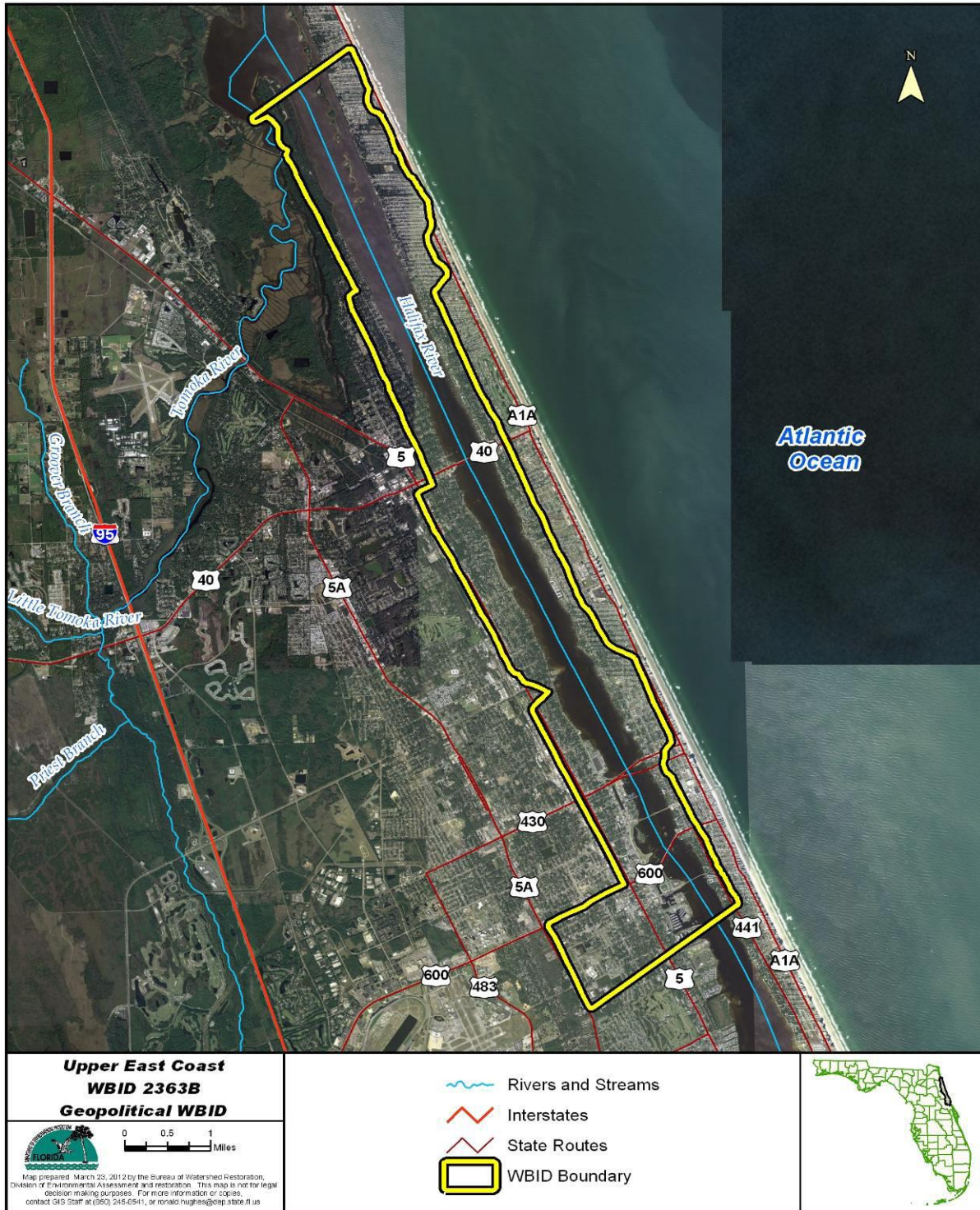
Middle St. Johns adopted BMAP for Nutrients (TN & TP) and Dissolved Oxygen (DO)



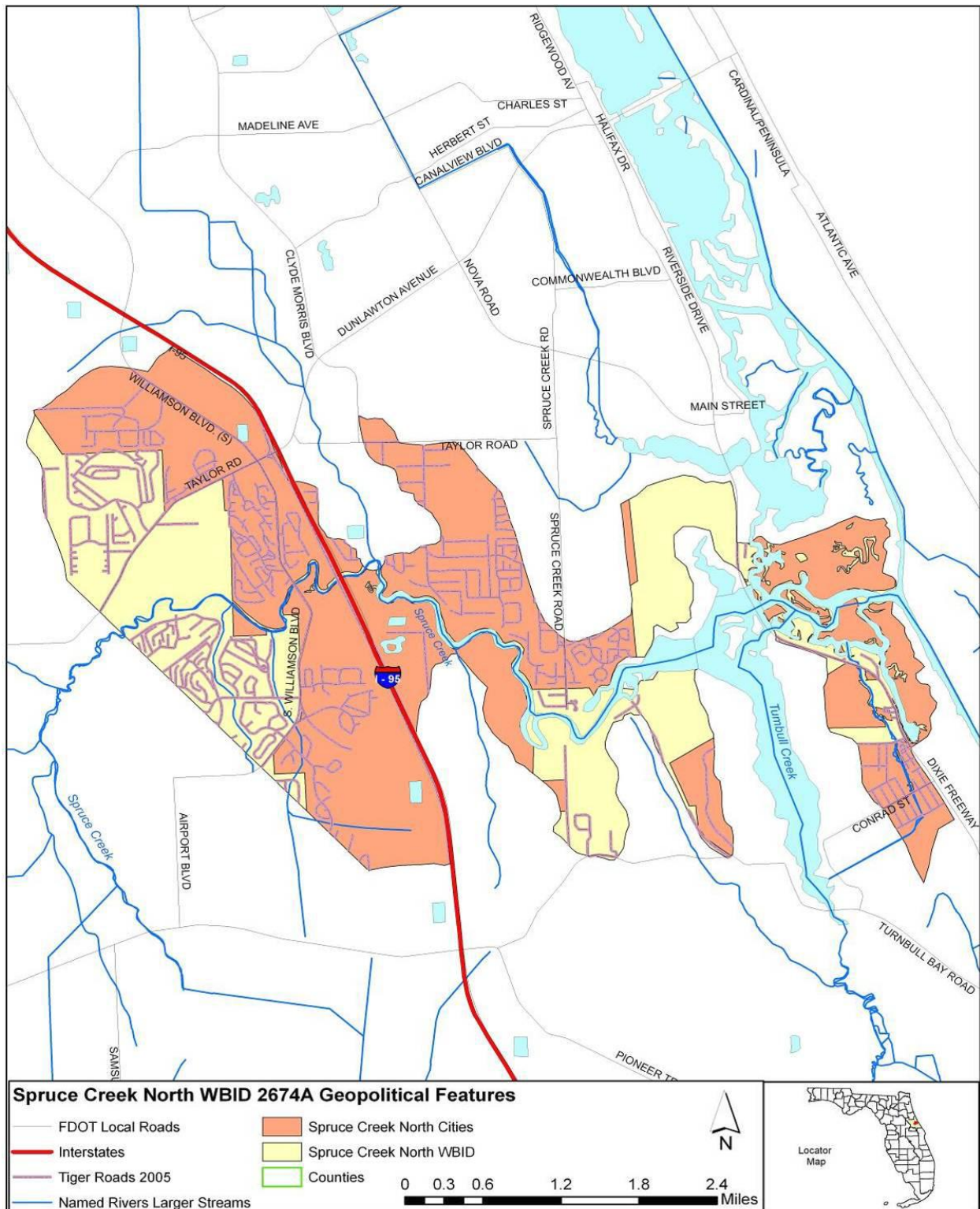
North Indian River Lagoon adopted BMAP
for Nutrients [Total Nitrogen (TN) and Total Phosphorus (TP)]



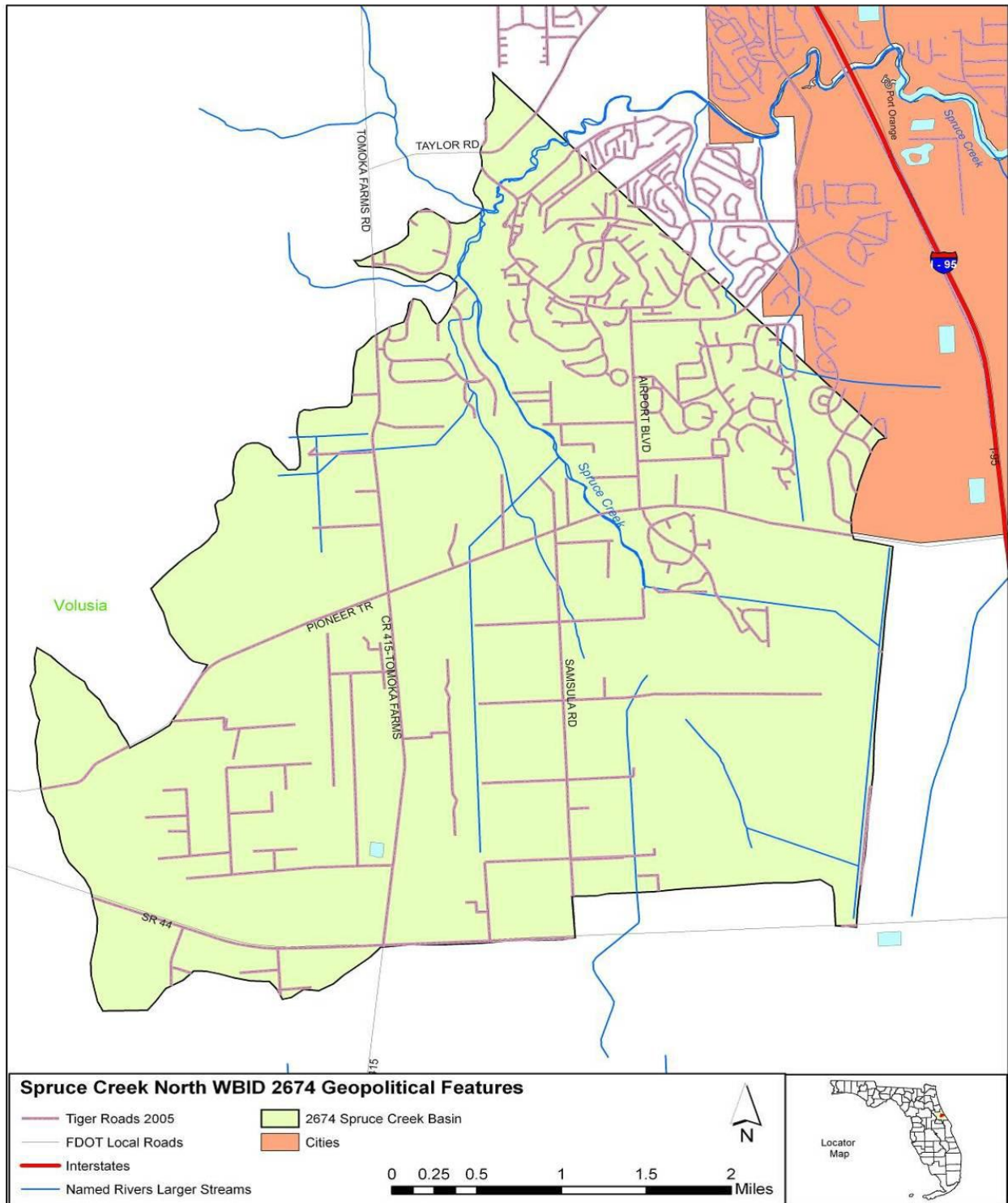
Enlarged map of segment of North Indian River Lagoon adopted BMAP within Volusia County at US1 in Oak Hill south to county line.



Halifax River segment adopted TMDL for Total Nitrogen (TN)
from the Tomoka Basin south to Bellvue



Spruce Creek adopted TMDL for Fecal Coliforms from Spruce Creek Fly In west and south to US44.



Spruce Creek adopted TMDL for Total Phosphorus (TP) and Dissolved Oxygen (DO) from Spruce Creek Fly In east to the Intercoastal Waterway



Blue Spring and Blue Spring Run draft TMDL for Nitrate (NO₃)



Tomoka River (fresh water segment) draft TMDL for Nutrients (TN & TP)
from Nova Rd. south to Shunz Rd.