

DRAINAGE TASK TEAM

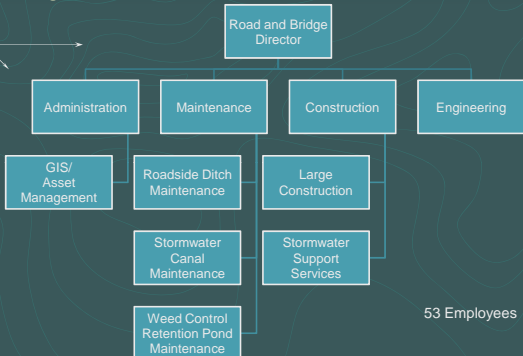
JUDY GRIM, P.E.
ROAD AND BRIDGE DIRECTOR



The flow of water during and immediately after a rainfall. As stormwater flows, it picks up particles and pollutants from roads, yards, parking lots and roofs. The result is stormwater runoff. Pollutants found in stormwater include fertilizers, metals, greases, pesticides and animal waste.

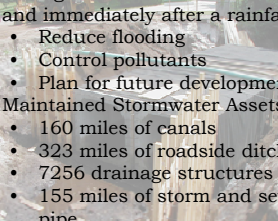
Stormwater runoff is the largest single pollutant source affecting the quality of our lakes, canals, rivers and estuaries.

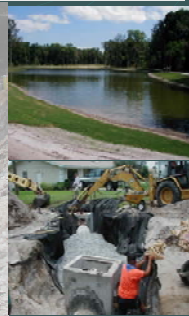
Organizational Structure



County of Volusia Public Works

DRAINAGE TASK TEAM STORMWATER MANAGEMENT PROGRAM GOALS

- 
- Manage the flow of water during and immediately after a rainfall.
 - Reduce flooding
 - Control pollutants
 - Plan for future development
 - Maintained Stormwater Assets:
 - 160 miles of canals
 - 323 miles of roadside ditches
 - 7256 drainage structures
 - 155 miles of storm and sewer pipe
 - 277 Retention areas



County of Volusia Public Works

Fees

- Single Family Residential
 - Fixed rate - \$72.00
- Commercial Properties**
- Based on the property's square footage of impervious surface



County of Volusia Public Works

Stormwater Management 5 Year Capital Improvement Projects Plan

[illegible]

County of Volusia Public Works

Challenges

- ⚙ Increase in Expenses. No increase in Revenues
- ⚙ Emergency Events
- ⚙ Identifying Areas for Drainage Improvement:
 - 🌳 Home Flooding
 - 🌳 Structure Flooding
 - 🌳 Street Flooding
 - 🌳 Yard Flooding

County of Volusia Public Works 7

Drainage Task Team Projects



Tanglewood Flooding Resolution



Acquisition and Demolition of Two Existing Homes
Expansion of Original Pond

County of Volusia Public Works 8

Drainage Task Team Projects



Flomich Avenue



Airport Road

County of Volusia Public Works 9

Drainage Task Team Projects



Tributary "E" Glencoe Road



Ditch Maintenance

County of Volusia Public Works 10

Questions?

County of Volusia Public Works 11