

## WELCOME CITIZEN'S ACADEMY!

VOLUSIA COUNTY DIVISION OF CORRECTIONS  
DEPARTMENT OF PUBLIC PROTECTION



VOLUSIA COUNTY DIVISION OF CORRECTIONS

## DIVISION'S MISSION STATEMENT

Protect the community by maintaining a secure jail that also  
is **safe, humane, and constitutional** in operation.



VOLUSIA COUNTY DIVISION OF CORRECTIONS

2

## VCDC STAFF

We are a diverse organization  
289 Sworn Officers and 61 Civilian Staff



VOLUSIA COUNTY DIVISION OF CORRECTIONS

3

## CORRECTIONS ACADEMY

Education, Training, and Certification

Correctional Officers  
receive training and are  
certified in:

- Interpersonal Skills
- Legal Issues
- First Responder
- Emergency Preparedness
- Correctional Operations
- Defensive Tactics
- Firearms



VOLUSIA COUNTY DIVISION OF CORRECTIONS

4

## CERTIFICATION REQUIREMENTS

- **420 hours** of training at a certified Criminal Justice Training Center at **Daytona State College**.
- Pass the **Florida Department of Law Enforcement (FDLE) State exam** for Certified Corrections Officers.
- Continue their training and education throughout their careers as a **correctional professional**.



VOLUSIA COUNTY DIVISION OF CORRECTIONS

5

## PRIMARY JOB RESPONSIBILITIES

A Corrections Officer's primary duties are defined as **Care, Custody and Control** of inmates incarcerated in our facilities.



VOLUSIA COUNTY DIVISION OF CORRECTIONS

6

## CORRECTIONS SRT TEAM

Corrections Officers volunteer to participate on the **Strategic Reserve Team**, which is activated during public emergencies, such as hurricanes and wildfires.



VOLUSIA COUNTY DIVISION OF CORRECTIONS

7

## CORRECTIONS EXTRACTION TEAM



Officers are trained in special Use of Force (UOF) extraction techniques to safely remove inmates who are uncooperative, violent and aggressive from their cell.



VOLUSIA COUNTY DIVISION OF CORRECTIONS

8

## VOLUSIA COUNTY BRANCH JAIL

- Built in 1987
- Design capacity for 601 inmates
- Rated capacity for 899 inmates
- Medium to maximum security jail
- Males awaiting trial on felony offenses
- Males sentenced to Florida State Prison pending transport
- Detains juvenile inmates
- Intake (admission) function



VOLUSIA COUNTY DIVISION OF CORRECTIONS

9

## VOLUSIA COUNTY CORRECTIONAL FACILITY

- Built in 1987
- Design capacity for 234 inmates, Rated capacity for 595 inmates
- Medium to minimum security jail
- Female inmates
- Male and female inmates sentenced to county jail
- Sentenced inmates assigned to outside work details

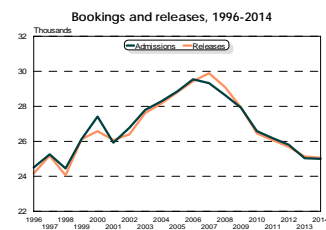


VOLUSIA COUNTY DIVISION OF CORRECTIONS

10

## BOOKING AND RELEASES

Number of Bookings and Releases, 2014  
25,001 Bookings      25,037 Releases



60% percent of inmates are released within 3 days of admission.

Approximately 6% of inmates stay longer than 120 days.

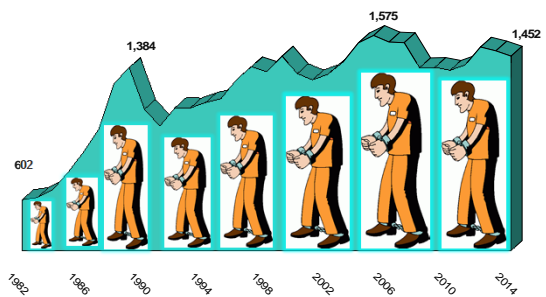


VOLUSIA COUNTY DIVISION OF CORRECTIONS

11

## AVERAGE DAILY POPULATION (ADP)

The ADP is determined by how many beds are occupied by inmates each day.



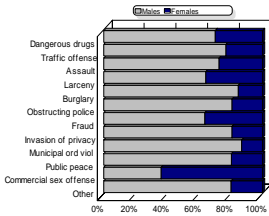
VOLUSIA COUNTY DIVISION OF CORRECTIONS

12

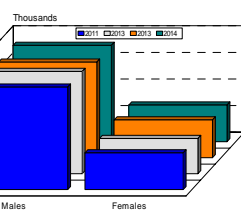
## OFFENSE AT ADMISSION

Booking offense and Inmate gender

Charge at Admission



Number of Admissions

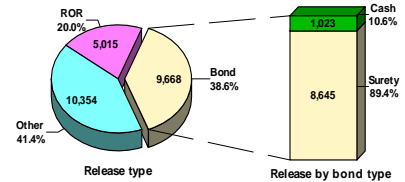


VOLUSIA COUNTY DIVISION OF CORRECTIONS

13

## METHOD OF RELEASE

The majority of releases post bond and almost 90% are surety bonds



VOLUSIA COUNTY DIVISION OF CORRECTIONS

14

## INMATE HOUSING UNITS



After an inmate is booked into jail, he/she is interviewed by medical staff and assigned to the intake unit pending a First Appearance hearing, usually within 24 hours of jail admission.



VOLUSIA COUNTY DIVISION OF CORRECTIONS

15

## PROGRAM SERVICES

Program Services oversees and directs the provision of a wide variety of educational, counseling, religious, and recreational opportunities for inmates. Self-improvement programs include:

- Education (ABE & GED)
- HIV testing and counseling
- Alcoholics Anonymous
- Narcotics Anonymous
- Corrections Treatment and Diversion Program - CTDP



VOLUSIA COUNTY DIVISION OF CORRECTIONS

16

## CORRECTIONS VOLUNTEERS

Volunteers save the county an estimated \$1.9 million annually



- Volunteers reduce costs for taxpayers.
- Volunteers become "ambassadors," educating their family and friends about corrections and the county.
- Volunteers can convey to inmates, in a way that staff sometimes cannot, the larger community's concern for their welfare.



VOLUSIA COUNTY DIVISION OF CORRECTIONS

17

## VIDEO VISITATION

Provides a safe and secure environment for the visitors, inmates, and curtails the introduction of weapons, drugs, cell phones and other types of contraband into the correctional facility.



Video visitation, along with its interactive voice scheduling system, saves taxpayers an estimated \$230,000 on staff salaries annually.



VOLUSIA COUNTY DIVISION OF CORRECTIONS

18

## INMATE WORK DETAILS

Inmate labor saves the county an estimated \$5.1 million annually.



Inmates perform a variety of duties inside and outside the jail. The work assigned is consistent with their ability, interest, medical status as well as the needs of the institution.



VOLUSIA COUNTY DIVISION OF CORRECTIONS

19

## OPERATING COSTS

Property tax dollars fund the operation of the jail facilities.

The average daily cost of confining an inmate was \$67.75.

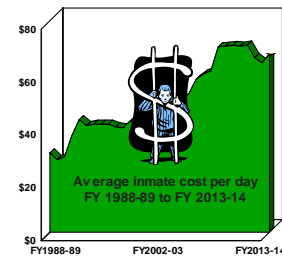
These costs do not include capital expenditures.

### Budget and Expenditures

#### Adopted Budget

FY 2015-16

\$38,229,583



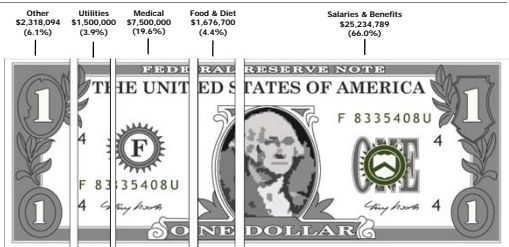
VOLUSIA COUNTY DIVISION OF CORRECTIONS

20

## ADOPTED BUDGET, FY 2015-16

Salaries and benefits accounted for 66% of the adopted budget.

The cost of operating a jail is typically the largest expense in any correctional budget.



VOLUSIA COUNTY DIVISION OF CORRECTIONS

21

## TECHNOLOGY

Inmate banking and commissary system



Electronic log of inmate welfare checks



WiFi notebooks for Maintenance Trades Workers to process work orders in the field



VOLUSIA COUNTY DIVISION OF CORRECTIONS

22

## CHALLENGES

- Inmates - Special Needs:
  - Mental Health, ADA
  - High security
- Staff – Recruitment and Retention
- Facilities – Aging, 24/7 Operations



VOLUSIA COUNTY DIVISION OF CORRECTIONS

23

## CAPITAL IMPROVEMENT PROJECTS

5 wooden dormitory structures dating from mid-1970s replaced with 2 block construction structures, which opened in February, 2015. Cost was \$4.1M



VOLUSIA COUNTY DIVISION OF CORRECTIONS

24



### CAPITAL IMPROVEMENT PROJECTS

Renovated Intake/Receiving at VCBJ, new vehicle sally port, Booking and Medical / Mental Health areas as part of the overall renovation project at the Branch Jail (\$5.9 Mil).





VOLUSIA COUNTY DIVISION OF CORRECTIONS

25

### CAPITAL IMPROVEMENT PROJECTS

New sally port completed, August 2014.

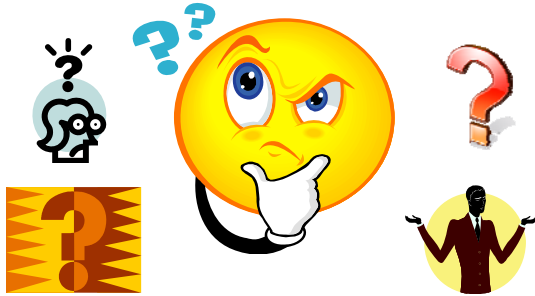





VOLUSIA COUNTY DIVISION OF CORRECTIONS

26

### Questions and Answers





VOLUSIA COUNTY DIVISION OF CORRECTIONS

27