

VOLUSIA COUNTY  
PUBLIC WORKS DEPARTMENT  
**SOLID WASTE DIVISION**

Leonard Marion, Director



1

## Solid Waste Division

Provide efficient solid waste collection, reduction and disposal services

- 70 Full time employees
- Class I & III Disposal Cells
- Yard Trash
- Materials Recycling Facility
- Household Hazardous Waste
- White Goods/Tire Processing
- Methane Recovery Plant
- Bio-Solid Processing Facility

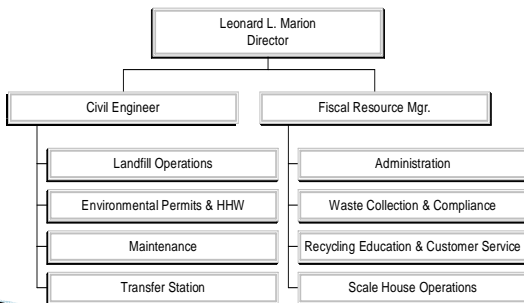
Tomoka Farms Road Landfill

West Volusia Transfer Station



2

## Solid Waste Division Organizational Chart



Employees: 70

2

## Solid Waste Division

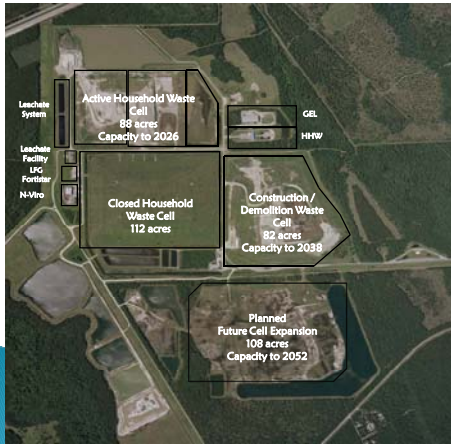
Response role for disaster events

- Responsible for coordinating the Temporary Debris Storage and Reduction Site (TDSRS), permanent storage and final disposal of all disaster related debris
- Responsible for managing any debris recycling, white goods, and household hazardous waste disposal actions
- Monitors & investigates illegal dumping of storm related debris
- Assists in determining if debris on private property is a public nuisance and/or presents public health and safety issues
- Assists Road & Bridge Division with debris removal coordination and documentation

4

## Tomoka Landfill Capacity

- Class I Waste through 2052



## Solid Waste Fee Schedule

### Assessment for Waste Collection

(effective 10/01/2009)

\$190.00/year

### Residential Vehicles

Cars \$4.00/each

Pick-ups, Vans & Trailers \$8.00/each

Vehicles over 2.5 cu yd capacity to be charged by weight

### Commercial Vehicles

Class I - Household Waste \$34.00/ton

Class III - Construction & Demolition Waste \$28.00/ton

Yard Trash & Land Clearing \$23.00/ton

Clean Debris - Recycling \$13.00/ton

Tires (vehicle) \$100.00/ton

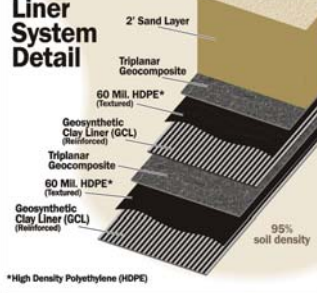
Asbestos \$200.00/ton

Special Waste Minimum twice waste class rate

*Note: Out of county mixed loads, loads received after or before normal operation hours and unsecured loads shall be charged double the established rates.*

## Class I Disposal Cell

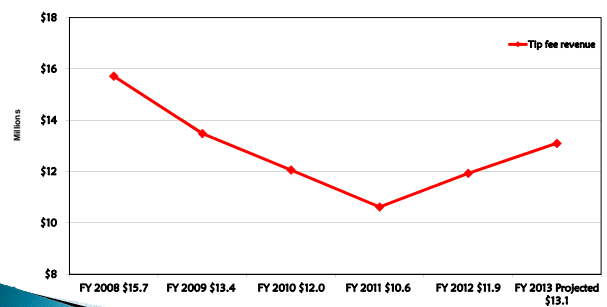
### Liner System Detail



- 11 acres for future expansion
- Cost = \$275,000 / acre
- Constructed with materials to prevent groundwater leaching
- Materials collect leachate to protect the health and well being of the environment

## Solid Waste Tip Fee Revenues

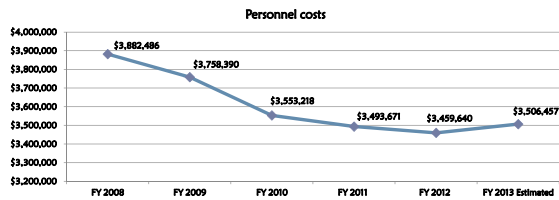
- Tip fee revenue history



## Solid Waste Operational Cost Savings Implemented

### Work schedule efficiencies :

- Right sizing workforce proportionate to demand



Equipment efficiencies –\$3.3 million in savings through fleet right sizing, equipment re-life's & reduced fuel consumption

9

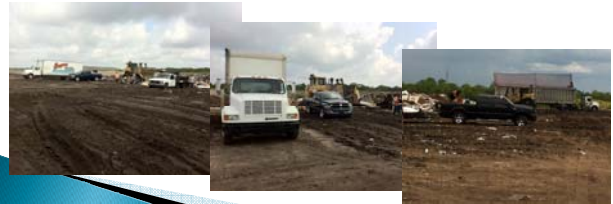
## Solid Waste Future Operational Initiatives

### Citizens Convenience Center objective:

- Enhance the overall operation & safety of the landfill
- Allow for separation of residential customers from commercial vehicles and heavy landfill equipment

### Residential vehicles utilizing the landfill on average / day

- 62 / day – Monday – Saturday
- 78 / average Saturday



11

## Solid Waste Future Operational Initiatives

### Citizens Convenience Center Design

- Future Residential drop-off area @ Tomoka Farms Road Landfill
  - Will be modeled after the West Volusia Transfer Station
  - Provide waste segregation for recycling



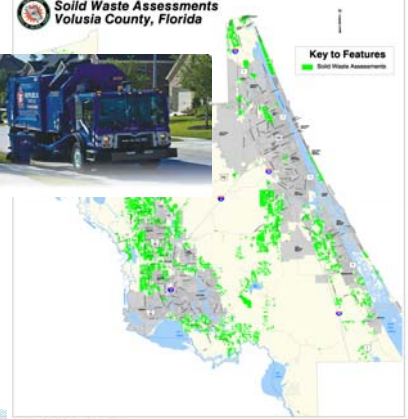
10

### Unincorporated Volusia County

### Solid Waste Assessments Volusia County, Florida



- 20% of Customer base
- Vast Service Area
- Goal is to provide equitable service countywide



14

## Residential Curbside Collection Services

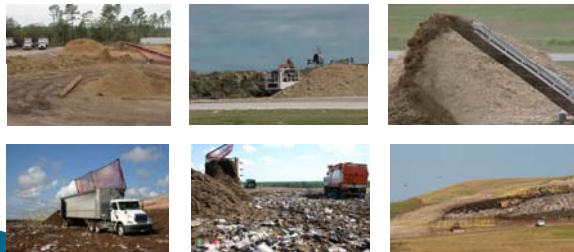
- Household Waste
- Recycling
- Yard Waste



13

## Woody Waste Recycling

Solid Waste Division recycles and/or reuses yard trash, land clearing debris and clean wood into mulch at the Tomoka Landfill and the West Volusia Transfer Station. Last year we reduced over **70,600** tons of wood waste into mulch. Mulch is mixed to a **50/50** ratio with dirt & then used for daily cover at the Class 1 disposal cell.



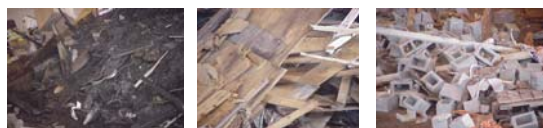
*Volusia County Solid Waste offers free mulch to Volusia County residents year-round while available.*

15

## Waste Not Accepted For Curbside Collection

### Construction / Demolition Debris

Dispose of at the Tomoka Landfill or Transfer Station



### Used Motor Oil

Please Recycle at Many County Fire Station Locations



### Lead Acid Batteries

Please dispose at the Household Hazardous Waste Facility at the Tomoka Landfill and Transfer Station



14

## Regional Recycling Facility

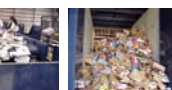
- 40,000 square foot regional recyclable material processing facility opened in June 2000
- Operated by G.E.L. Corp.
- All unincorporated recyclable material is processed through this facility
- Commercial paper line added in 2005 – increased recycling



Fiber Line



Co-mingled Line



16

## Special Wastes

### Appliances/White Goods

Banned by the State from landfill disposal as of January 1, 1990. If you live in unincorporated Volusia County, please call your hauler to schedule a pick-up.



### Tires

Banned from being buried in the landfill by the State as of July 1, 1989. Residents may take up to four typical automobile size tires to the Tomoka Landfill in Daytona Beach or the West Volusia Transfer Station in Deland free of charge on weekends only. Any tire may be disposed of at either waste facility during weekdays for a minimal charge.



17

## Environmental Partnerships

### Methane Collection System



Methane is collected from the closed Class I Landfill and directed to a co-generation plant and converted into electricity, lighting **3,800** houses

### Bio - Solid Processing Facility

Operated by N - Viro Corporation

**45,500** tons of Waste Water

bio-solids processed annually



### Monitoring Wells & Stormwater Systems

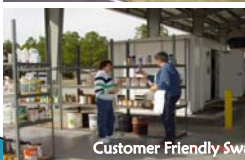
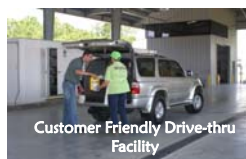


**95** wells detect and correct any environmental water impacts from disposal and recycling operations

19

## Environmental Resources

### Household Hazardous Waste Facility



18

## Solid Waste Division

### • Why not Privatize the Landfill?

- Loose long term planning and economic control
- Citizens and business's would endure economic impacts i.e.; collection and disposal fees
- Private sector operates for profit county provides a service
- Possible loss of supporting programs i.e.; HHW, Swap Shop, 15 Drop-off stations
- Private sector business plan let's fill make some money and leave

20



## Solid Waste Division – Current Issues

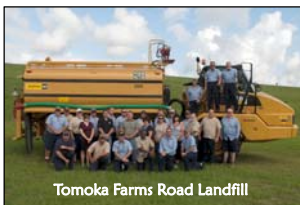
- **Work w / FDEP on implementing new 75% waste reduction goal by 2020**
  - Incremental goals established by FDEP
  - 2012 – Volusia County exceeded incremental goal – **43%** of MSW recycled
  - Research exclusive commercial collection franchises for unincorporated areas
  - RFEI for on-site Class III Recycling
  - Conducting Commercial Waste Audit to foster commercial recycling opportunities
- **Evaluate alternative Solid Waste technologies**
  - Gasification
  - Waste to Energy (WTE)
- **Refine yard trash recycling efforts**
  - Feedstock for bio-fuel operations
  - Composting, mulch, & potting soil amendments
- **Research alternate options for Landfill Gas (LFG)**
  - Evaluate LFG as energy source for bio-fuel operations

21

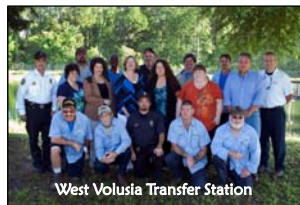
QUESTIONS?

23

## Solid Waste Division - Staff



Tomoka Farms Road Landfill



West Volusia Transfer Station

22