

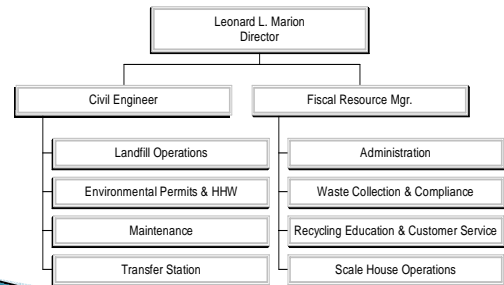
VOLUSIA COUNTY
PUBLIC WORKS DEPARTMENT
SOLID WASTE DIVISION

Leonard Marion, Director



1

Solid Waste Division Organizational Chart



Employees: 69

2

Solid Waste Division

Provide efficient solid waste collection, reduction and disposal services



Tomoka Farms Road Landfill

West Volusia Transfer Station



- 69 Full time employees
- Class I & III Disposal Cells
- Yard Trash
- Materials Recycling Facility
- Household Hazardous Waste
- White Goods/Tire Processing
- Methane Recovery Plant

3

Solid Waste Division

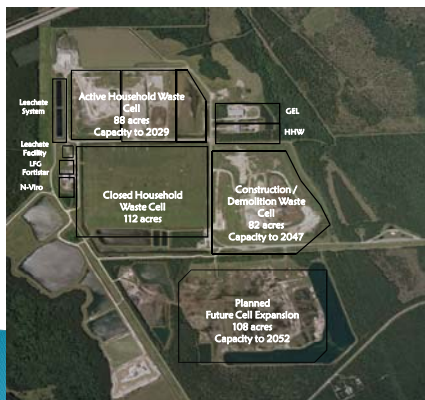
Response role for disaster events

- Responsible for coordinating the Temporary Debris Storage and Reduction Site (TDSRS), permanent storage and final disposal of all disaster related debris
- Responsible for managing any debris recycling, white goods, and household hazardous waste disposal actions
- Monitors & investigates illegal dumping of storm related debris
- Assists in determining if debris on private property is a public nuisance and/or presents public health and safety issues
- Assists Road & Bridge Division with debris removal coordination and documentation

4

Tomoka Landfill Capacity

- Class I Waste through 2052



5

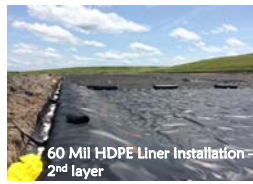
Class I Disposal Cell



- 11 acres for future expansion
- Cost = \$433,000 / acre
- Constructed with materials to prevent groundwater leaching
- Materials collect leachate to protect the health and well being of the environment

6

Class I Disposal Cell - Construction



7

Solid Waste Fee Schedule

Assessment for Waste Collection
(effective 10/01/2009)

\$190.00/year

Residential Vehicles

Cars \$4.00/each
Pick-ups, Vans & Trailers \$8.00/each

Vehicles over 2.5 cu yd capacity to be charged by weight

Commercial Vehicles

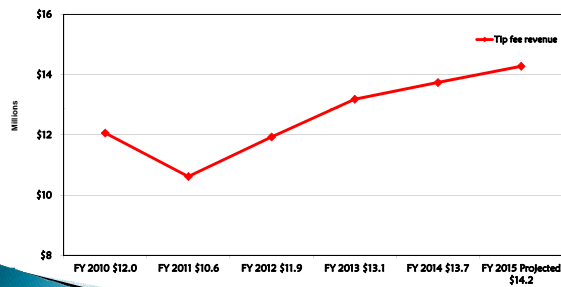
Class I - Household Waste \$34.00/ton
Class III - Construction & Demolition Waste \$28.00/ton
Yard Trash & Land Clearing \$23.00/ton
Clean Debris - Recycling \$13.00/ton
Tires (vehicle) \$100.00/ton
Asbestos \$200.00/ton
Special Waste Minimum twice waste class rate

Note: Out of county mixed loads, loads received after or before normal operation hours and unsecured loads shall be charged double the established rates.

8

Solid Waste Tip Fee Revenues

- Tip fee revenue history



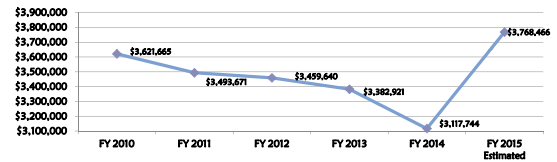
9

Solid Waste Operational Costs

Work schedule efficiencies :

- Right sizing workforce proportionate to demand

Personnel Costs



Equipment efficiencies – 7 year equipment replacement scheduled reviewed & updated annually based on operational needs

10

Solid Waste Future Operational Initiatives

Citizens Convenience Center Design

- Future Residential drop-off area @ Tomoka Farms Road Landfill
 - Will be modeled after the West Volusia Transfer Station
 - Provide waste segregation for recycling



11

Solid Waste Future Operational Initiatives

Citizens Convenience Center objective:

- Enhance the overall operation & safety of the landfill
- Allow for separation of residential customers from commercial vehicles and heavy landfill equipment

Residential vehicles utilizing the landfill on average / day

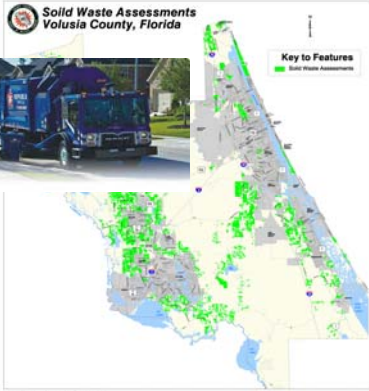
- 62 / day – Monday – Saturday
- 78 / average Saturday





12

Unincorporated Volusia County

**Solid Waste Assessments
Volusia County, Florida**



Key to Features
 Solid Waste Assessments



- 20% of Customer base
- Vast Service Area
- Goal is to provide equitable service countywide

13

Residential Curbside Collection Services

- Household Waste
- Recycling
- Yard Waste




14

Waste Not Accepted For Curbside Collection

Construction / Demolition Debris
 Dispose of at the Tomoka Landfill or Transfer Station



Used Motor Oil
 Please Recycle at Many County Fire Station Locations



Lead Acid Batteries
 Please dispose at the Household Hazardous Waste Facility at the Tomoka Landfill and Transfer Station



15

Woody Waste Recycling

Solid Waste Division recycles and/or reuses yard trash, land clearing debris and clean wood into mulch at the Tomoka Landfill and the West Volusia Transfer Station. Last year we reduced over **68,000** tons of wood waste into mulch. Mulch is mixed to a **50/50** ratio with dirt & then used for daily cover at the Class 1 disposal cell.



Volusia County Solid Waste offers free mulch to Volusia County residents year-round while available.

16

Regional Recycling Facility

- 40,000 square foot regional recyclable material processing facility opened in June 2000
- Operated by G.E.L. Corp.
- All unincorporated recyclable material is processed through this facility
- Commercial paper line added in 2005 – increased recycling



Fiber Line




Co-mingled Line




17

Special Wastes

Appliances/White Goods
 Banned by the State from landfill disposal as of January 1, 1990. If you live in unincorporated Volusia County, please call your hauler to schedule a pick-up.



Tires
 Banned from being buried in the landfill by the State as of July 1, 1989. Residents may take up to four typical automobile size tires to the Tomoka Landfill in Daytona Beach or the West Volusia Transfer Station in Deland free of charge on weekends only. Any tire may be disposed of at either waste facility during weekdays for a minimal charge.



18

Environmental Resources

Household Hazardous Waste Facility



19

Environmental Partnerships

Methane Collection System



Methane is collected from the closed Class I Landfill and directed to a flare station to destruct the methane gas produced, currently evaluating landfill gas recovery options; to include the creation of electricity



Monitoring Wells & Stormwater Systems

95 wells detect and correct any environmental water impacts from disposal and recycling operations

20

Solid Waste Division

• Why not Privatize the Landfill?

- Loose long term planning and economic control
- Citizens and business's would endure economic impacts i.e.; collection and disposal fees
- Private sector operates for profit county provides a service
- Possible loss of supporting programs i.e.; HHW, Swap Shop, 15 Drop-off stations
- Private sector business plan let's fill make some money and leave

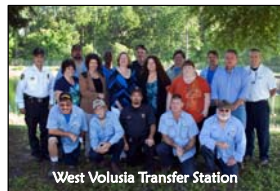
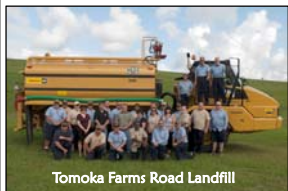
21

Solid Waste Division – Current Issues

- Work w / FDEP on implementing new 75% waste reduction goal by 2020
 - Incremental goals established by FDEP
 - 2014 – Volusia County exceeded incremental goal – 56% of MSW recycled
 - In-house project for on-site Class III Recycling
 - Conducting Commercial Waste Audits to foster commercial recycling opportunities
- Evaluate alternative Solid Waste technologies
 - Gasification
 - Waste to Energy (WTE)
- Refine yard trash recycling efforts
 - Feedstock for bio-fuel operations
 - Composting, mulch, & potting soil amendments
- Research alternate options for Landfill Gas (LFG)
 - Evaluate LFG as energy source for bio-fuel operations

22

Solid Waste Division - Staff



23

QUESTIONS?

24