

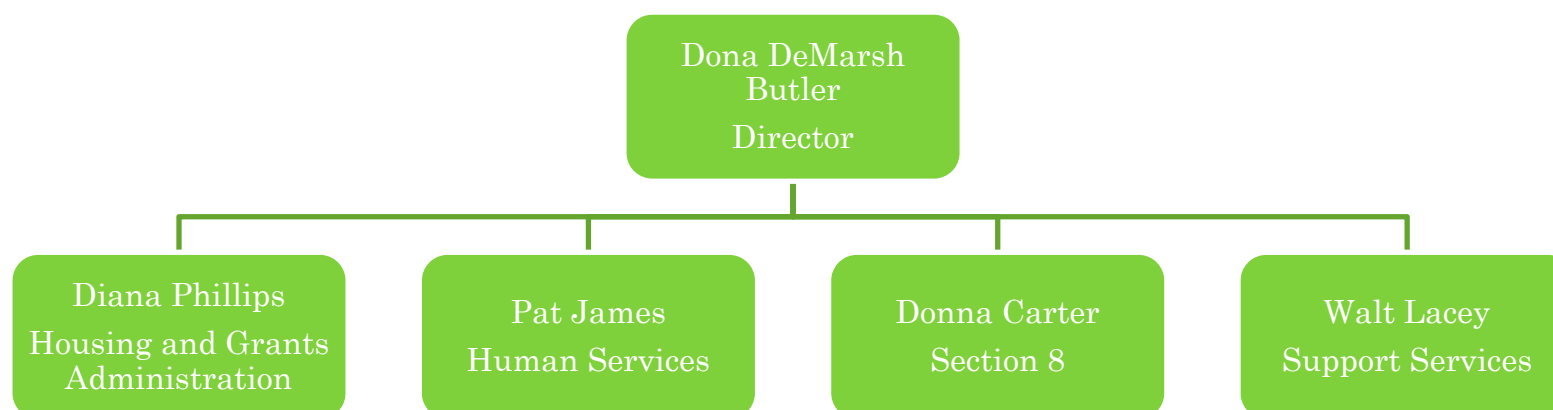
A decorative graphic on the left side of the slide consists of several vertical green lines of varying widths and a cluster of five solid green circles of different sizes arranged in a vertical, slightly overlapping pattern.

COMMUNITY ASSISTANCE

Human Services – Emergency Assistance

February 7, 2013

COMMUNITY ASSISTANCE



COMMUNITY ASSISTANCE - BACKGROUND

- The division of Community Assistance relies on considerable grant funding to support its administrative costs and provide direct services to the community.
- The division's budget for FY 2012-13 is \$32 million.
- Grant funding from state and federal sources is \$21.53 million (68 percent) of budget.
- 87 percent of the budget is spent on direct services.

HUMAN SERVICES

Mission

To improve the quality of life for eligible Volusia County citizens through temporary emergency assistance and supportive services.

HUMAN SERVICES

- 4 locations – DeLand, Daytona Beach, New Smyrna Beach, Orange City
- Emergency assistance for:
 - Rent, mortgage
 - Utility payments (water, power, gas)
 - Prescription and medical
 - Dental
 - Transportation
- Indigent burials
- Family self-sufficiency
- Summer food
- Hospital and nursing home costs for indigents

HUMAN SERVICES – EMERGENCY ASSISTANCE FUNDING



- Grants managed by Human Services for Emergency Assistance:
 - Low Income Home Energy Assistance Program (LIHEAP)- LIHEAP provides heating and cooling energy assistance to eligible county residents.
 - Community Services Block Grant (CSBG) - Assists eligible county residents in becoming economically self-sufficient; provides temporary emergency assistance to eligible households that experienced a financial crisis within the past 180 days.
 - Emergency Shelter Grant (ESG) - Provides for costs of operating homeless shelters, essential social services to homeless individuals, and services to prevent homelessness.

EMERGENCY ASSISTANCE - ELIGIBILITY

- Eligibility is based on grant and county requirements which include residency and total household income.
- They are required to fall within the Federal Poverty Income Guidelines (which change annually):
 - “The set minimum amount of income that a family needs for food, clothing, transportation, shelter and other necessities. In the United States, this level is determined by the Department of Health and Human Services. The Federal Poverty Level varies according to family size. The number is adjusted for inflation and reported annually in the form of poverty guidelines.”

2009 AND 2010 POVERTY INCOME GUIDELINES



HOUSEHOLD SIZE	75%	100%	125% (CSBG; ESG)	150% (LIHEAP only)	200% (GF only & WAP)
1	\$8,168	\$10,830	\$13,528	\$16,245	\$21,660
2	\$10,928	\$14,570	\$18,213	\$21,855	\$29,140
3	\$13,733	\$18,310	\$22,888	\$27,465	\$36,620
4	\$16,538	\$22,050	\$27,563	\$33,075	\$44,100
5	\$19,343	\$25,790	\$32,238	\$38,685	\$51,580
6	\$22,148	\$29,530	\$36,913	\$44,295	\$59,060
7	\$24,953	\$33,270	\$41,588	\$49,905	\$66,540
8	\$27,758	\$37,010	\$46,263	\$55,515	\$74,020
Each additional person add	\$2,805	\$3,740	\$4,675	\$5,610	\$7,480

2011 POVERTY INCOME GUIDELINES



HOUSEHOLD SIZE	75%	100%	125% (CSBG; ESG)	150% (LIHEAP only)	200% (GF only & WAP)
1	\$8,168	\$10,890	\$13,613	\$16,335	\$21,780
2	\$11,033	\$14,710	\$18,388	\$22,065	\$29,420
3	\$13,898	\$18,530	\$23,163	\$27,795	\$37,060
4	\$16,763	\$22,350	\$27,938	\$33,525	\$44,700
5	\$19,628	\$26,170	\$32,713	\$39,255	\$52,340
6	\$22,493	\$29,990	\$37,488	\$44,985	\$59,980
7	\$25,358	\$33,810	\$42,263	\$50,715	\$67,620
8	\$28,223	\$37,630	\$47,038	\$56,445	\$75,260
Each additional person add	\$2,865	\$3,820	\$4,775	\$5,730	\$7,640

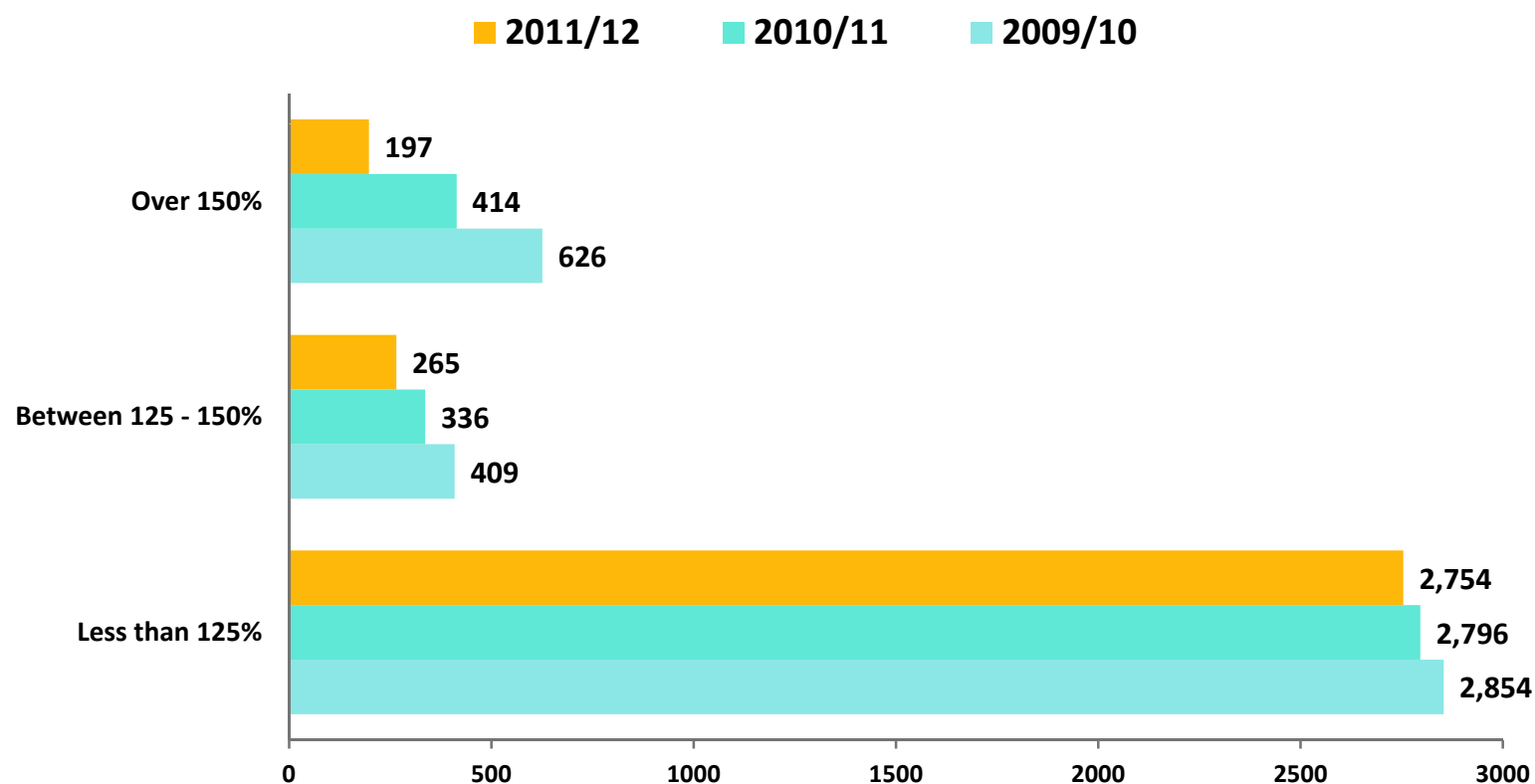
2012 POVERTY INCOME GUIDELINES



HOUSEHOLD SIZE	75%	100%	125% (CSBG; ESG)	150% (LIHEAP, GF)	200% (WAP only)
1	\$8,378	\$11,170	\$13,963	\$16,755	\$22,340
2	\$11,348	\$15,130	\$18,913	\$22,695	\$30,260
3	\$14,318	\$19,090	\$23,863	\$28,635	\$38,180
4	\$17,288	\$23,050	\$28,818	\$34,575	\$46,100
5	\$20,258	\$27,010	\$33,763	\$40,515	\$54,020
6	\$23,228	\$30,970	\$38,713	\$46,455	\$61,940
7	\$26,198	\$34,930	\$43,663	\$52,395	\$69,860
8	\$29,168	\$38,890	\$48,613	\$58,335	\$77,780
Each additional person add	\$2,970	\$3,960	\$4,950	\$5,940	\$7,920

EMERGENCY ASSISTANCE

Total households assisted by poverty level



* Maximum poverty level was increased to 200 % in FY 2009/10 per CSBG/ARRA guidelines

EMERGENCY ASSISTANCE

- Clients wait in long lines to determine if they are eligible to receive assistance, sometimes arriving as early as 4 a.m.
- They are required to provide financial information about their household, including:
 - Proof of Volusia County residency for past 60 days
 - Social security numbers for all household members
 - Florida driver's license or picture ID
 - Income for all household members for past 60 days (signed lease/rental agreement, mortgage or real estate tax statement)

EMERGENCY ASSISTANCE

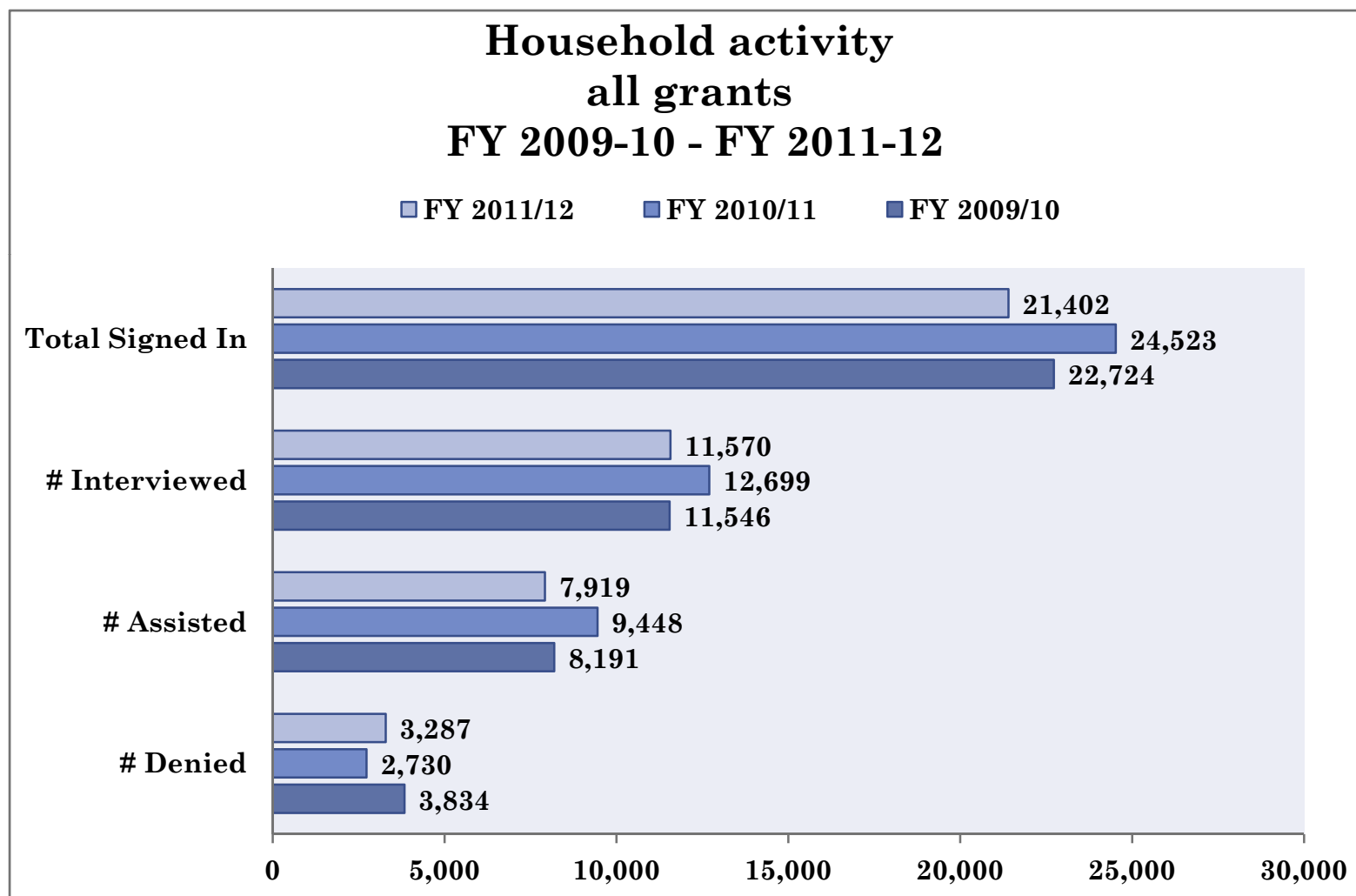
CLIENTS LINE UP AS EARLY AS 4 a.m.



EMERGENCY ASSISTANCE

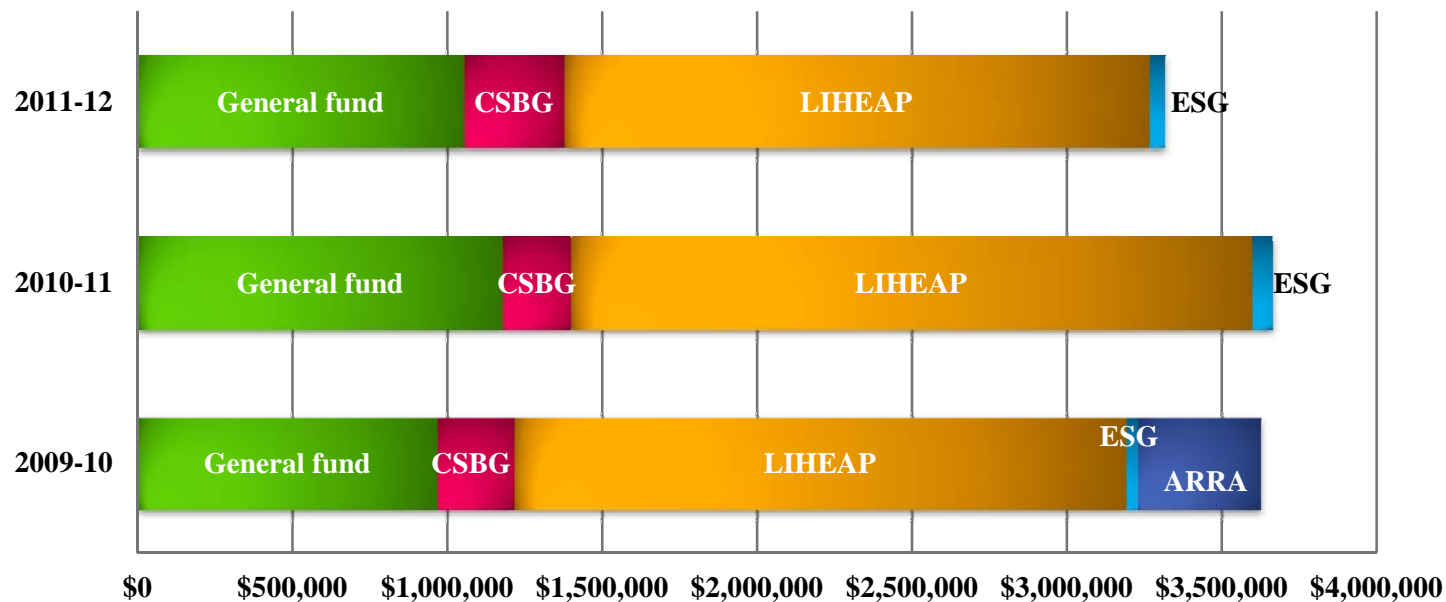
- In FY 2011-12, 21,402 households signed in for assistance.
- Approximately half of those were interviewed – meaning they provided all of the necessary paperwork required to determine eligibility.
- Of those, 7,919 were assisted and 3,287 were denied.

EMERGENCY ASSISTANCE



EMERGENCY ASSISTANCE

**Expenditures for all emergency assistance
FY 2009-10 - FY 2011-12**



	2009-10	2010-11	2011-12
■ General fund	\$967,874	\$1,179,249	\$1,052,483
■ CSBG	\$247,423	\$219,390	\$325,169
■ LIHEAP	\$1,974,254	\$2,195,132	\$1,885,500
■ ESG	\$37,579	\$65,794	\$51,054
■ ARRA	\$397,778	\$0	\$0

EMERGENCY ASSISTANCE

Shelter expenditures FY 2009-10 - FY 2011-12

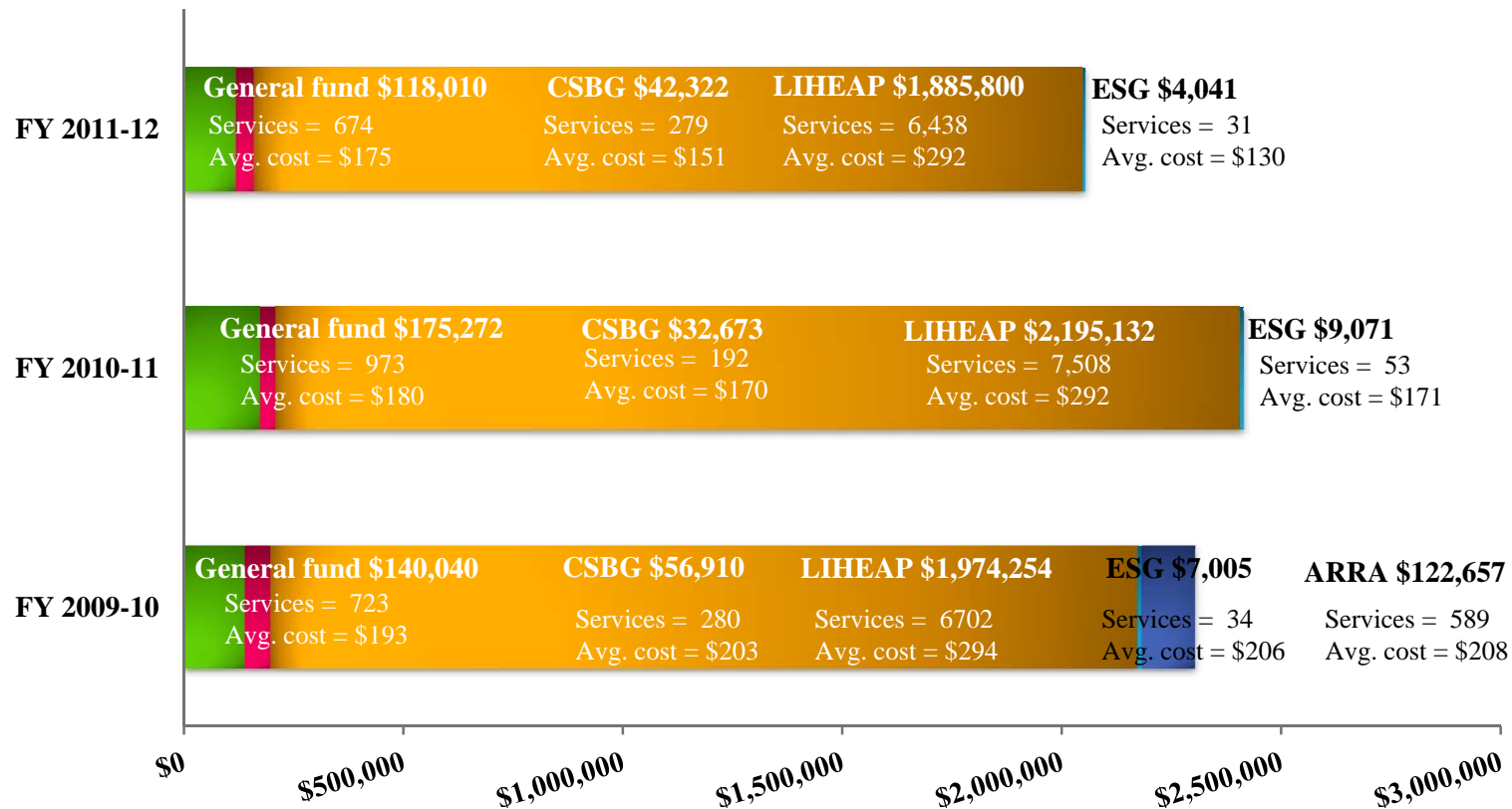
■ General fund ■ CSBG ■ LIHEAP ■ ESG ■ ARRA



EMERGENCY ASSISTANCE

Utility expenditures FY 2009-10 - FY 2011-12

■ General fund ■ CSBG ■ LIHEAP ■ ESG ■ ARRA



EMERGENCY ASSISTANCE

Medical expenditures FY 2009-10 - FY 2011-12

■ General fund ■ CSBG ■ LIHEAP ■ ESG ■ ARRA



EMERGENCY ASSISTANCE

Indigent burial expenditures FY 2009-10 - FY 2011-12

■ General fund ■ CSBG ■ LIHEAP ■ ESG ■ ARRA



EMERGENCY ASSISTANCE

CURRENT LEVEL OF SERVICE



Client eligibility scale FY 2012-13					
Household size	Type of assistance	Funding source	Poverty guidelines	* Maximum one-time assistance	Combined maximum one-time assistance
Family w/o children	SHELTER	CSBG (rent, mortgage or deposit)	Up to 125%	\$300	\$500
		General fund (rent, mortgage or deposit)	Up to 150 %		
	UTILITIES	CSBG	Up to 125%	\$200	
		General	Up to 150 %		

21

* A household may receive assistance more than one time during the fiscal year as long as it is for a different crisis.

EMERGENCY ASSISTANCE

CURRENT LEVEL OF SERVICE



Client eligibility scale FY 2012-13					
Household size	Type of assistance	Funding source	Poverty guidelines	* Maximum one-time assistance	Combined maximum one-time assistance
Family with children	SHELTER	CSBG (rent, mortgage or deposit)	Up to 125%	\$500	\$850
		General fund (rent, mortgage or deposit)	Up to 150 %		
	UTILITIES	CSBG	Up to 125%	\$350	
		General	Up to 150 %		

22

* A household may receive assistance more than one time during the fiscal year as long as it is for a different crisis.

EMERGENCY ASSISTANCE

CURRENT LEVEL OF SERVICE



Client eligibility scale FY 2012-13					
Household size	Type of assistance	Funding source	Poverty guidelines	* Maximum one-time assistance	Combined maximum one-time assistance
Disabled / elderly family	SHELTER	CSBG (rent, mortgage or deposit)	Up to 125%	\$500	\$850
		General fund (rent, mortgage or deposit)	Up to 150 %		
	UTILITIES	CSBG	Up to 125%	\$350	
		General	Up to 150 %		

23

* A household may receive assistance more than one time during the fiscal year as long as it is for a different crisis.

EMERGENCY ASSISTANCE

CURRENT LEVEL OF SERVICE



Client eligibility scale FY 2012-13					
Household size	Type of assistance	Funding source	Poverty guidelines	* Maximum one-time assistance	Combined maximum one-time assistance
ALL	Heating cooling deposits	LIHEAP	Up to 150%	\$150 - \$300 (Home) – every 12 months from date of service Up to \$600 (crisis) – per season	May be used with utility and shelter assistance
	Dental	General funds	Up to 150%	(Max. of up to three extractions per year)	
	Medical	General funds	Up to 150%	(Max. of up to \$1,000)	
	Transportation	CSBG	Up to 125%	Gas cards / Bus Passes	
		General funds	Up to 150%		
N/A	Indigent burial cremation	General	Up to 125%	\$1,995 – burial \$300 - \$600 cremation	

24

* A household may receive assistance more than one time during the fiscal year as long as it is for a different crisis.

EMERGENCY ASSISTANCE

- During the previous fiscal year, staff requested and was granted by County Council, an additional \$75,000 to maintain current levels of service.
- 2012-13 budget did not include those additional funds.
- Staff requests additional funds for this fiscal year to maintain current service levels due to two factors:
 - ESG grants funds no longer can be used for emergency assistance (loss of \$50,000).
 - Rising costs and requests for service for indigent burial (increase of \$63,000).