

VOLUSIA COUNTY, FLORIDA
2007 TAXABLE BASE

2006 Base	\$ 38.067 Billion
------------------	--------------------------

Increases in the 2007 Tax Base

New Construction	1.340 Billion	3.52%
Net Reassessment(Real Estate)	1.243 Billion	3.26%
Centrally Assessed	0.006 Billion	0.01%
Personal Property	0.094 Billion	0.25%

Total Increase in Base	2.682 Billion
-------------------------------	---------------

2007 Base	\$ 40.749 Billion	7.0%
------------------	--------------------------	-------------

TAX EXEMPTIONS

2007 Homestead and Senior Exemptions	3.841 Billion
---	---------------

2006 Homestead and Senior Exemptions	3.575 Billion
---	---------------

Increase	0.267 Billion	7.4%
-----------------	----------------------	-------------

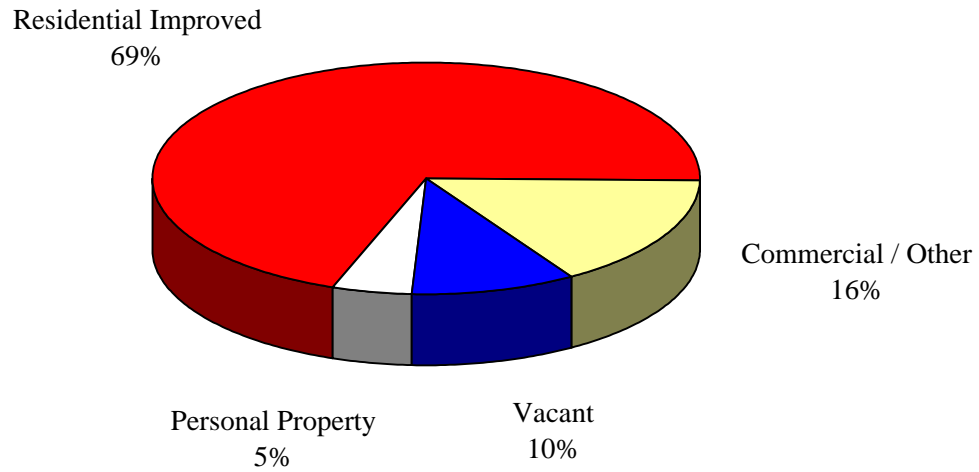
Homestead and Senior Exemptions represent 6.1% of the just value (market value).

Total Exemptions represent 34.9% of the just value (market value).

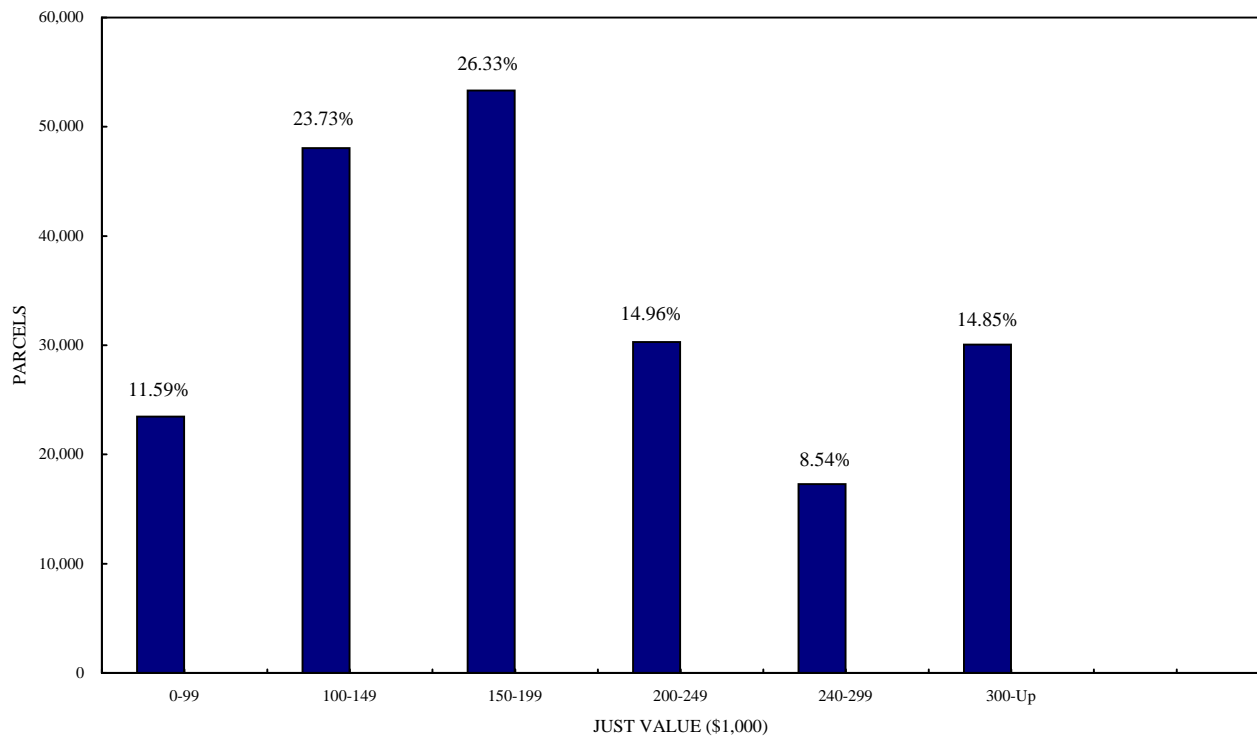
VOLUSIA COUNTY, FLORIDA

Classification of Property

Total Just Value \$62,549,887,458



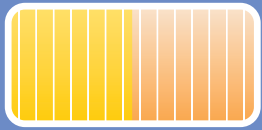
RESIDENTIAL IMPROVED PROPERTY



Volusia County
Chart of Taxable Values and Millages

	Taxable Value 2005-06	Millage Rate 2005-06	Taxable Value 2006-07	Millage Rate 2006-07	Taxable Value 2007-08	Rollback Rate 2007-08	Statutory Rollback Rate 2007-08	Millage Rate 2007-08
Countywide Funds								
General	\$29,790,710,206	5.30000	\$38,066,969,018	4.25630	\$40,749,421,560	4.10067	3.89564	3.89564
Library	\$29,790,710,206	0.59400	\$38,066,969,018	0.47700	\$40,749,421,560	0.45998	0.43698	0.43698
Volusia Forever	\$29,790,710,206	0.20000	\$38,066,969,018	0.10610	\$40,749,421,560	0.10222	0.09711	0.09711
Volusia Forever - Voted Debt	\$29,790,710,206	N/A	\$38,066,969,018	0.09390	\$40,749,421,560	0.09055	0.09055	0.09055
Volusia Echo	\$29,790,710,206	0.20000	\$38,066,969,018	0.20000	\$40,749,421,560	0.19269	0.18306	0.18306
Total Countywide Funds	\$29,790,710,206	6.29400	\$38,066,969,018	5.13330	\$40,749,421,560	4.94611	4.70334	4.70334
Special Taxing Districts								
East Volusia Mosquito Control District	\$21,192,159,883	0.23800	\$27,031,061,926	0.19020	\$28,133,895,587	0.18796	0.17856	0.17856
Ponce De Leon Port Authority	\$21,192,163,920	0.09000	\$27,031,201,341	0.07190	\$28,134,031,337	0.07105	0.06750	0.06750
Municipal Service District	\$6,778,378,499	1.69100	\$8,748,002,692	1.33880	\$9,386,850,056	1.28237	1.21825	1.21825
Silver Sands-Bethune Beach MSD	\$829,179,644	0.01730	\$1,098,331,253	0.01120	\$1,025,314,859	0.01234	0.01172	0.01172
Fire Services District	\$7,017,410,942	3.24200	\$9,068,920,446	3.00000	\$9,740,838,844	2.86970	2.78361	2.78361

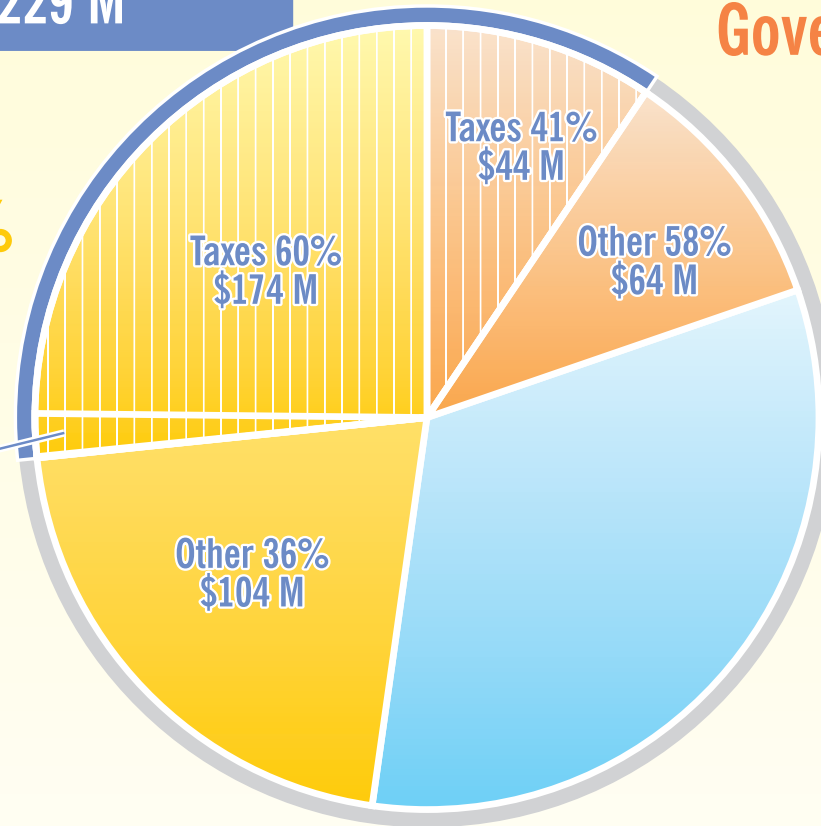
FY 2007-08 • \$602,603,971



Property Taxes 38%
\$229 M

General
Government 48%
\$289 M

Community
Redevelopment
Taxes 4%
\$11 M



Special District
Government 18%
\$108 M

All Other
Services 34%
\$205 M

General Government:

Corrections	Beach
ECHO/Forever	Elections
Judicial System	Health Dept.
Libraries	Leisure Seives
Sheriff	Community Services

Special District Government:

Fire Services
Growth Management
Mosquito Control
Port District
Sheriff

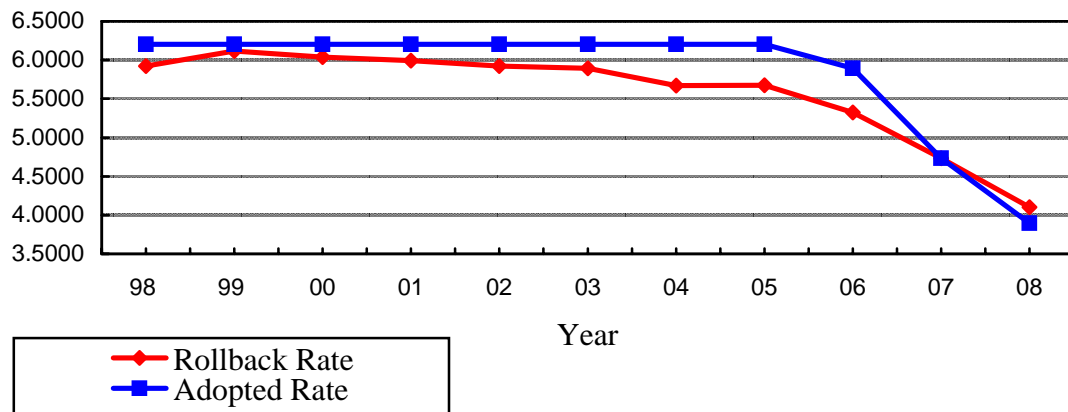
All Other Services:

Airport
Ocean Center
Road and Bridge
Solid Waste
Votran
Water and Sewer

VOLUSIA COUNTY, FLORIDA

Countywide Ad Valorem Tax Rates

Fiscal Year 2007-08



Countywide Ad Valorem Tax Rates		
Fiscal Year	Rollback Rate	Adopted Rate
1997-98	5.9230	6.2040
1998-99	6.1160	6.2040
1999-00	6.0380	6.2040
2000-01	5.9940	6.2040
2001-02	5.9203	6.2040
2002-03	5.8916	6.2040
2003-04	5.6716	6.2040
2004-05	5.6730	6.2040
2005-06	5.3249	5.8940
2006-07	4.7333	4.7333
2007-08	4.10067	3.89564

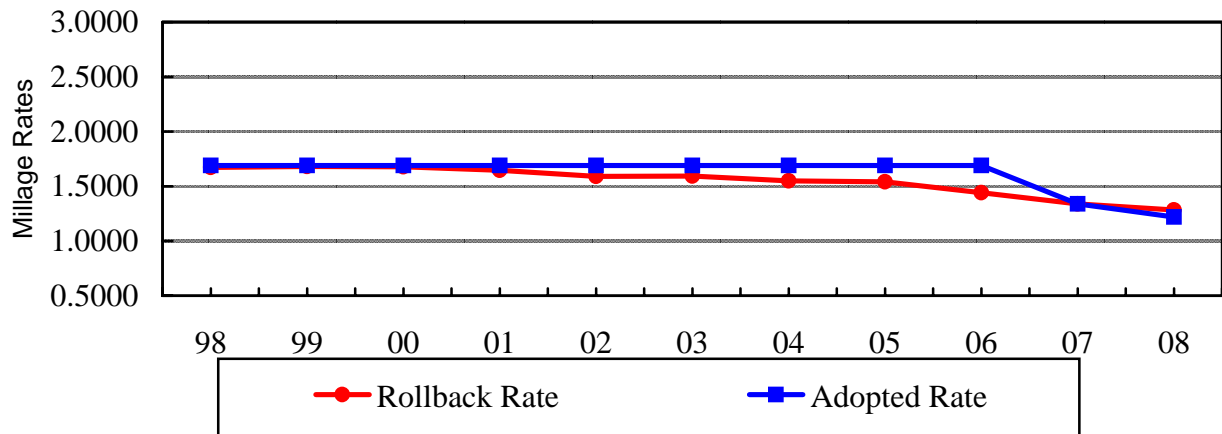
Excludes voted millage

VOLUSIA COUNTY, FLORIDA

Municipal Service District

Ad Valorem Tax Rates

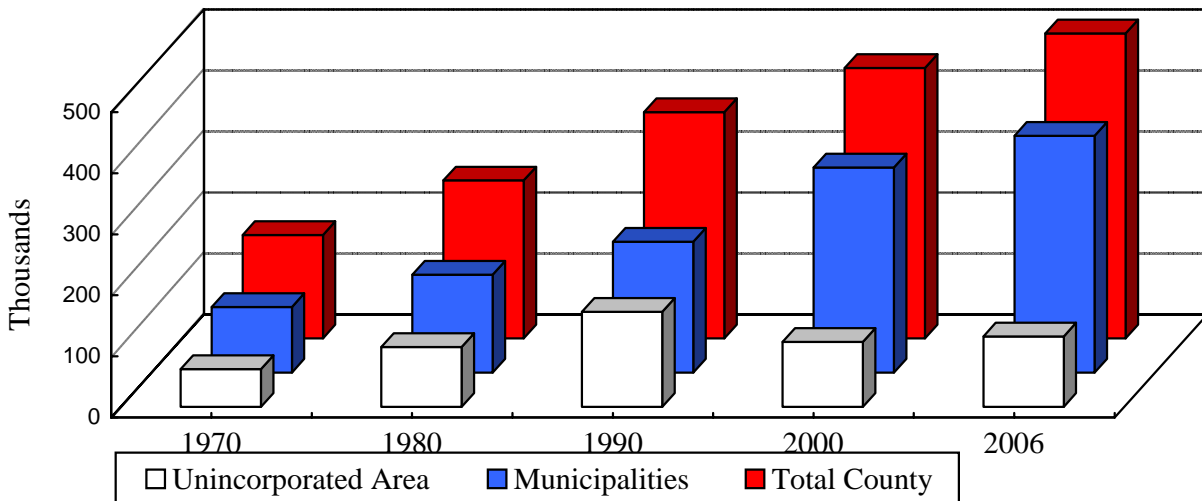
Fiscal Year 2007-08



Municipal Service District Ad Valorem Tax Rates		
Fiscal Year	Rollback Rate	Adopted Rate
1997-98	1.6720	1.6910
1998-99	1.6800	1.6910
1999-00	1.6770	1.6910
2000-01	1.6450	1.6910
2001-02	1.5902	1.6910
2002-03	1.5937	1.6910
2003-04	1.5504	1.6910
2004-05	1.5415	1.6910
2005-06	1.4419	1.6910
2006-07	1.3388	1.3388
2007-08	1.28237	1.21825

VOLUSIA COUNTY, FLORIDA

Population



Population Distribution (Rounded)

						Average Annual Growth
	1970	1980	1990	2000	2006	2005-2006
Daytona Beach	45,300	54,200	61,991	64,112	64,977	-0.2%
Daytona Beach Shores	770	1,300	2,197	4,299	4,980	6.8%
DeBary*	N/A	N/A	N/A	15,559	18,620	2.2%
DeLand	11,600	15,350	16,622	20,904	26,536	5.9%
Deltona*	N/A	N/A	N/A	69,543	85,484	3.0%
Edgewater	3,350	6,700	15,351	18,668	21,572	2.0%
Flagler Beach	N/A	N/A	N/A	76	76	0.0%
Holly Hill	8,200	10,000	11,141	12,119	12,614	0.0%
Lake Helen	1,300	2,000	2,344	2,743	2,893	1.6%
New Smyrna Beach	10,600	13,650	16,549	20,048	22,864	3.8%
Oak Hill	750	900	917	1,378	2,042	6.2%
Orange City	1,800	2,800	5,347	6,604	9,416	6.3%
Ormond Beach	14,050	21,400	29,721	36,301	40,294	1.5%
Pierson	650	1,000	2,988	2,596	2,645	0.5%
Ponce Inlet	330	1,000	1,704	2,513	3,271	0.7%
Port Orange	3,800	18,800	35,399	45,823	56,067	2.6%
South Daytona	5,000	11,300	12,488	13,177	13,773	-1.3%
Unincorporated	62,000	98,400	155,978	106,880	115,720	0.7%
TOTAL	169,500	258,800	370,737	443,343	503,844	0.5%

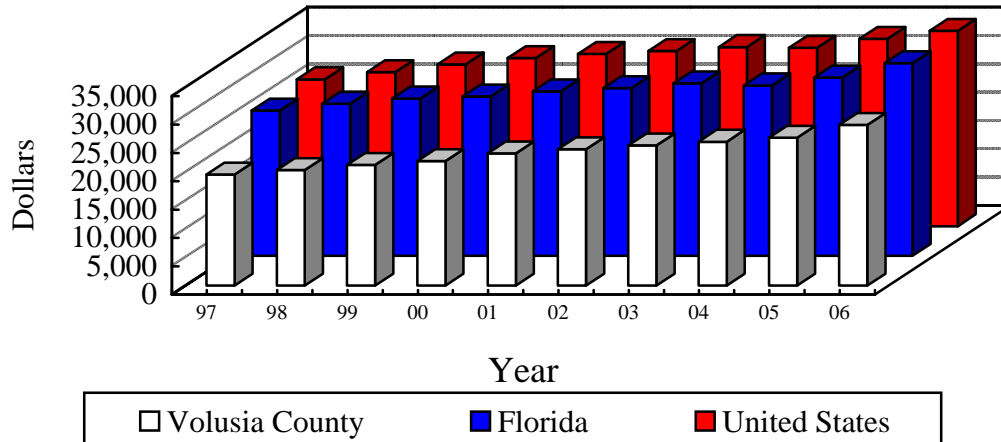
LSO Funding on subtotal population that excludes Daytona Beach and Unincorporated

Source: <http://edr.state.fl.us/population.htm>

*Incorporated after April 1, 1990

VOLUSIA COUNTY, FLORIDA

Per Capita Personal Income



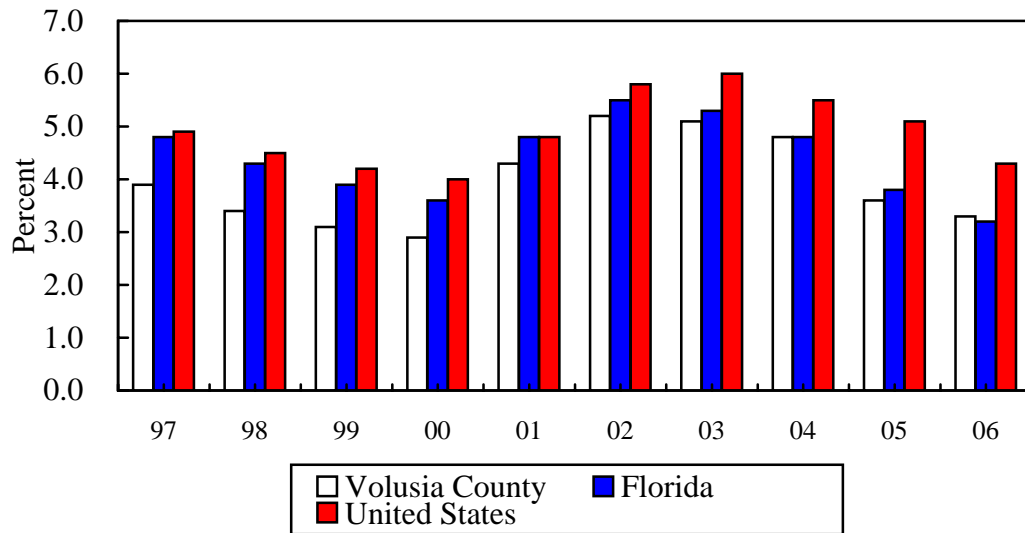
Per Capita Personal Income						
Year	Volusia County	Percent Change	Florida	Percent Change	U.S.	Percent Change
1997	19,600	5.0%	25,645	4.2%	25,924	5.2%
1998	20,387	4.0%	26,845	4.7%	27,203	4.9%
1999	21,293	4.4%	27,781	3.5%	28,546	4.9%
2000	21,988	3.3%	28,145	1.3%	29,676	4.0%
2001	23,329	6.1%	29,048	3.2%	30,413	2.5%
2002	24,059	3.1%	29,596	1.9%	30,941	1.7%
2003	24,747	2.9%	30,446	2.9%	31,632	2.2%
2004	25,403	2.7%	30,098	-1.1%	31,472	-0.5%
2005	26,118	2.8%	31,469	4.6%	33,050	5.0%
2006	28,347	8.5%	34,001	8.0%	34,471	4.3%

Source: U.S. Department of Commerce, Bureau of Economic Analysis, Survey of Current Business; Regional Economic Information System, Bureau of Economic Analysis

Although Volusia County's unemployment rate is notably lower than both the State and National averages, our average per capita income is lower as well. This trend is indicative of our growing tourism industry and demand for service related jobs. The County's commitment to improving Economic Development should result in higher paying jobs which will ultimately eliminate, if not reverse, the current per capita income gap that has steadily increased in recent years.

VOLUSIA COUNTY, FLORIDA

Unemployment Rate

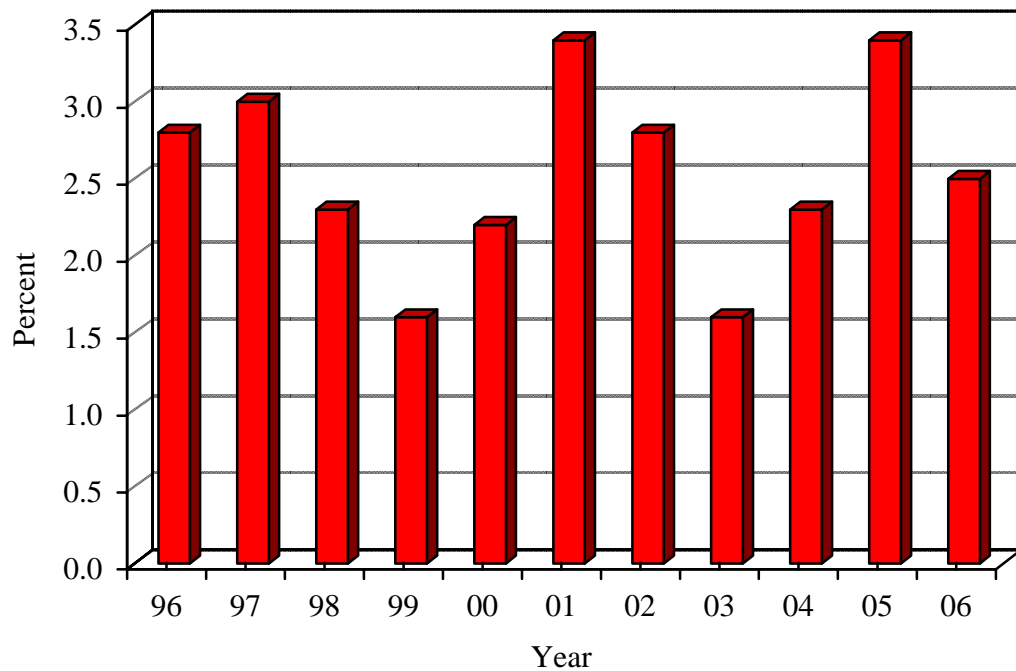


<u>Unemployment Rate</u>			
Year	Volusia County	Florida	United States
1997	3.9	4.8	4.9
1998	3.4	4.3	4.5
1999	3.1	3.9	4.2
2000	2.9	3.6	4.0
2001	4.3	4.8	4.8
2002	5.2	5.5	5.8
2003	5.1	5.3	6.0
2004	4.8	4.8	5.5
2005	3.6	3.8	5.1
2006	3.3	3.2	4.3

Source: Florida Research & Economic Database

UNITED STATES

Consumer Price Index



<u>Consumer Price Index</u>		
	U.S.	
	Index	Inflation
Year	1982-1984=100	Percent
1996	152.4	2.8%
1997	156.9	3.0%
1998	160.5	2.3%
1999	163.0	1.6%
2000	166.6	2.2%
2001	172.2	3.4%
2002	177.1	2.8%
2003	179.9	1.6%
2004	184.0	2.3%
2005	195.3	3.4%
2006	201.6	2.5%

Source: U.S. Department of Labor, Bureau of Labor Statistics

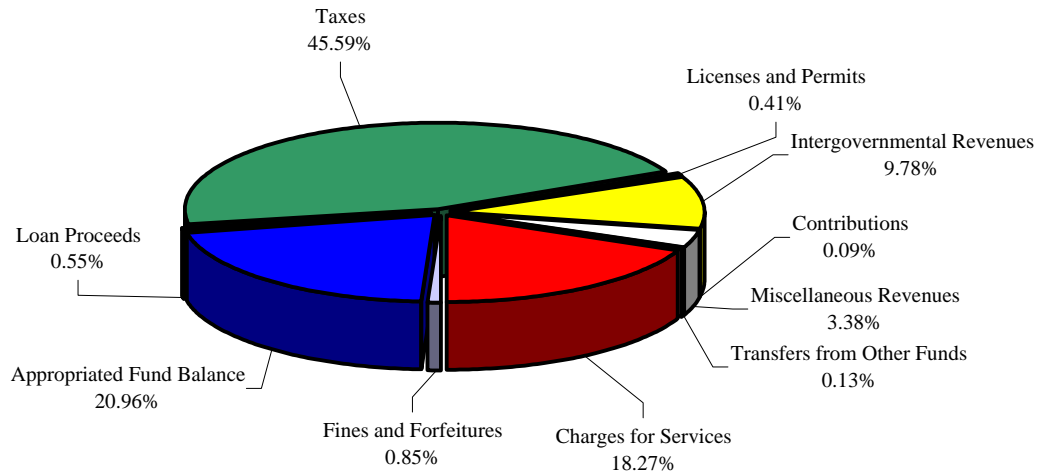
The Consumer Price Index (CPI) is an economic measure of inflation based on a "market basket" of goods and their corresponding changes in price from year to year. It exemplifies trends in the overall cost of doing business. Inflation affects all costs from personal wages to materials to borrowed money.

VOLUSIA COUNTY, FLORIDA

Revenues By Major Source

Fiscal Year 2007-08

\$602,603,971



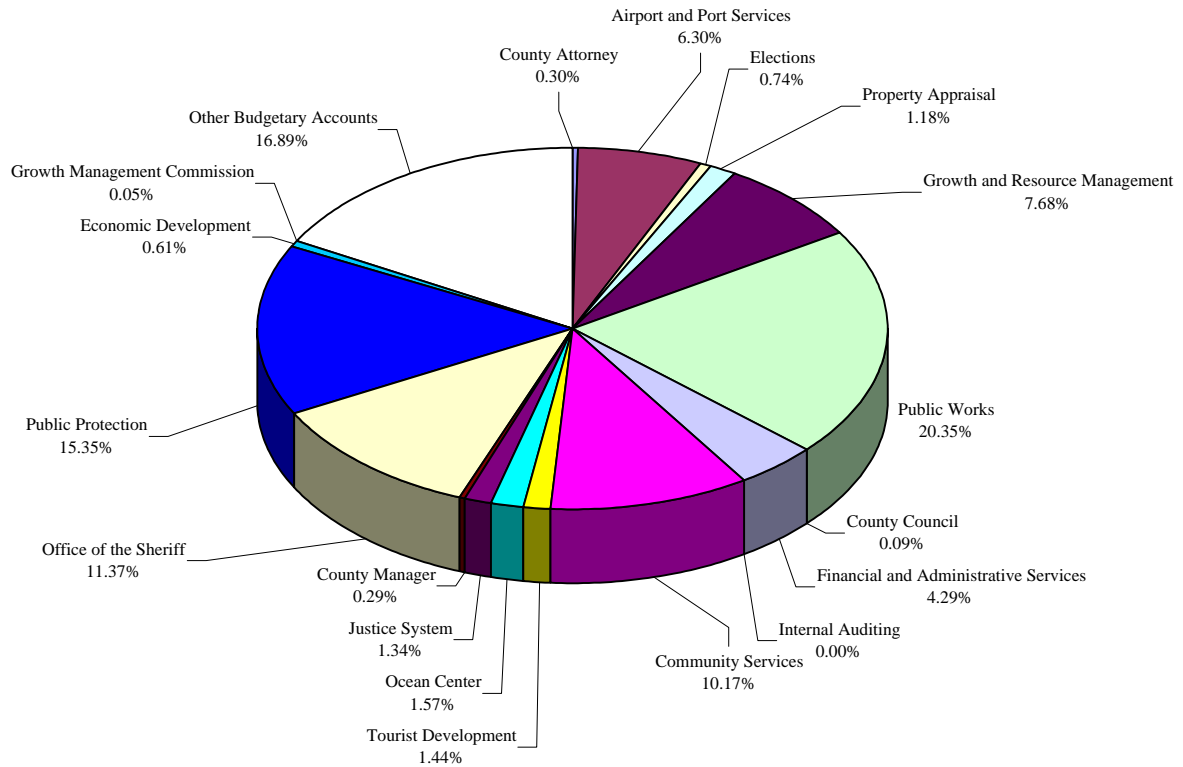
Revenues By Major Source		
Fiscal Year 2007-08		
Taxes	\$	274,702,172
Licenses and Permits		2,492,795
Intergovernmental Revenues		58,927,123
Charges for Services		110,110,561
Fines and Forfeitures		5,135,374
Miscellaneous Revenues		20,341,234
Non-Revenues		
Contributions		558,100
Loan Proceeds		3,287,279
Transfers from Other Funds		761,013
Appropriated Fund Balance		126,288,320
TOTAL REVENUES	\$	602,603,971

VOLUSIA COUNTY, FLORIDA

Expenditures By Department

Fiscal Year 2007-08

\$602,603,971



Expenditures By Department

Fiscal Year 2007-08

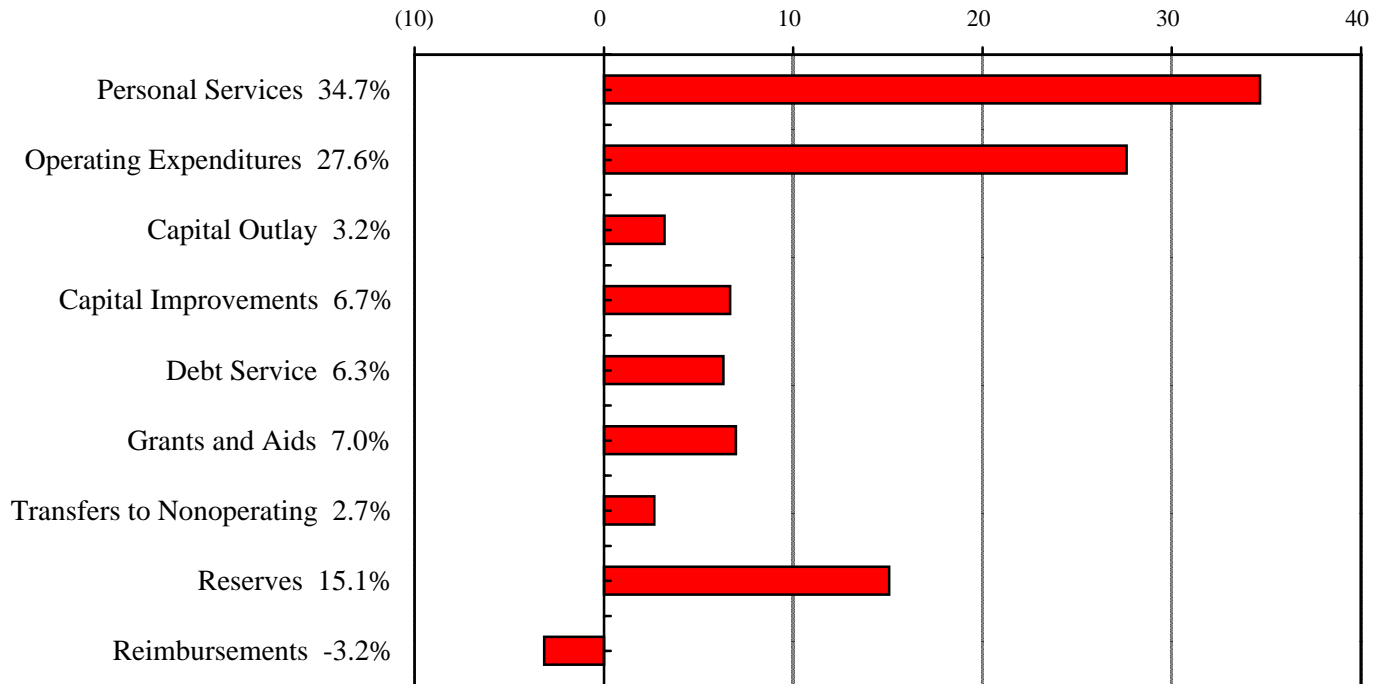
County Council	\$	531,349	Growth Management Commission	318,493
County Manager		1,723,674	Growth and Resource Management	52,735,727
County Attorney		1,796,570	Justice System	8,085,918
Elections		4,432,354	Office of the Sheriff	71,904,401
Internal Auditing		9,755	Public Protection	93,554,523
Property Appraisal		7,099,745	Community Services	62,232,697
Economic Development		3,655,168	Public Works	127,706,623
Airport and Port Services		38,626,568	Financial and Administrative Services	25,876,051
Ocean Center		9,450,048	Other Budgetary Accounts	145,548,404
Tourist Development		8,678,957	Interfund Transfers	(61,363,054)
		TOTAL EXPENDITURES	\$	602,603,971

VOLUSIA COUNTY, FLORIDA

Expenditures By Category

Fiscal Year 2007-08

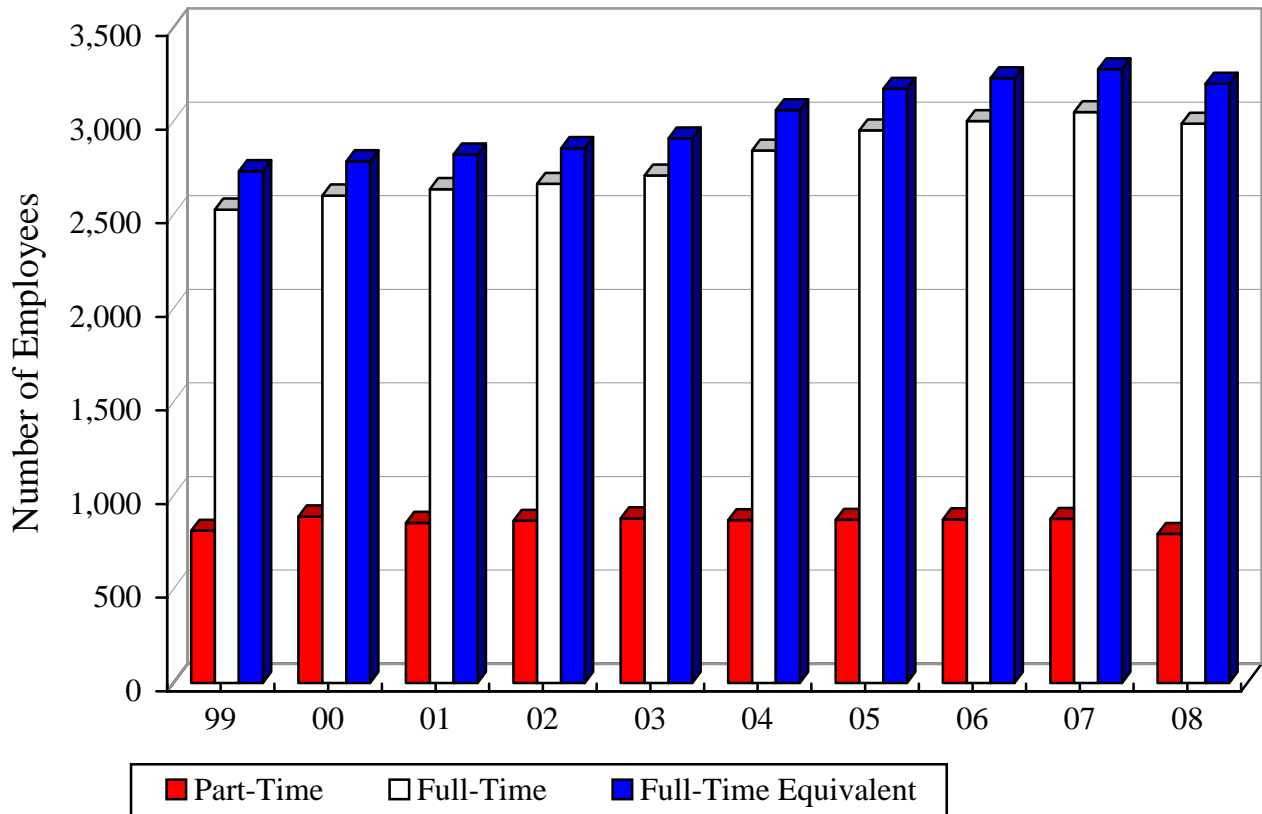
\$602,603,971



Expenditures By Category		
Fiscal Year 2007-08		
Personal Services	\$	208,877,245
Operating Expenditures		166,398,358
Capital Outlay		19,263,783
Subtotal Operating Expenses	\$	394,539,386
Capital Improvements		40,207,056
Debt Service		38,035,885
Grants and Aids		41,996,902
Transfers to Nonoperating		16,061,778
Reserves		90,774,321
TOTAL EXPENDITURES	\$	621,615,328
Service Charge Reimbursements		(19,011,357)
NET EXPENDITURES	\$	602,603,971

VOLUSIA COUNTY, FLORIDA

Personnel Authorizations



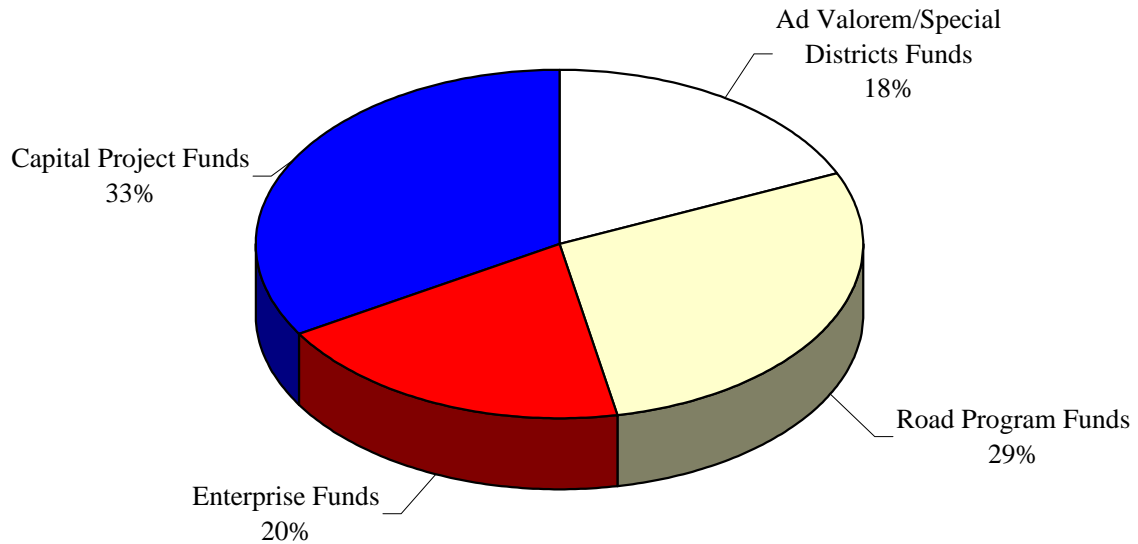
County of Volusia Personnel Authorizations FY 1998-99 to FY 2007-08			
Year	Part-time	Full-time	Full-time Equivalent
1998-99	813	2,529	2,734
1999-00	889	2,604	2,787
2000-01	855	2,638	2,824
2001-02	866	2,666	2,857
2002-03	879	2,711	2,909
2003-04	870	2,844	3,059
2004-05	871	2,952	3,174
2005-06	874	3,002	3,230
2006-07	876	3,049	3,278
2007-08	796	2,988	3,202

VOLUSIA COUNTY, FLORIDA

Capital Improvement Program

Fiscal Year 2007-08

\$60,464,629



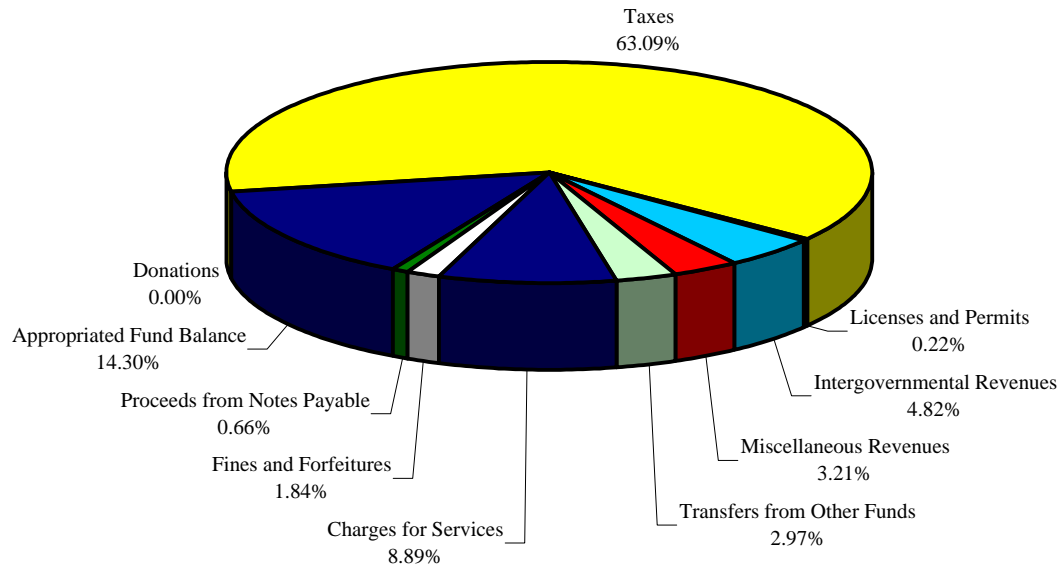
Capital Improvement Program by Fund Category Fiscal Year 2007-08	
<u>FUND CATEGORY</u>	<u>TOTAL REVENUE</u>
Ad Valorem/Special Districts Funds	\$ 11,074,015
Road Program Funds	17,254,965
Enterprise Funds	11,878,076
Operating Budget	\$ 40,207,056
Capital Project Funds	20,257,573
Non-Operating Budget	\$ 20,257,573
Total Revenues	\$ 60,464,629

VOLUSIA COUNTY, FLORIDA

General Fund Revenues By Major Source

Fiscal Year 2007-08

\$243,441,056



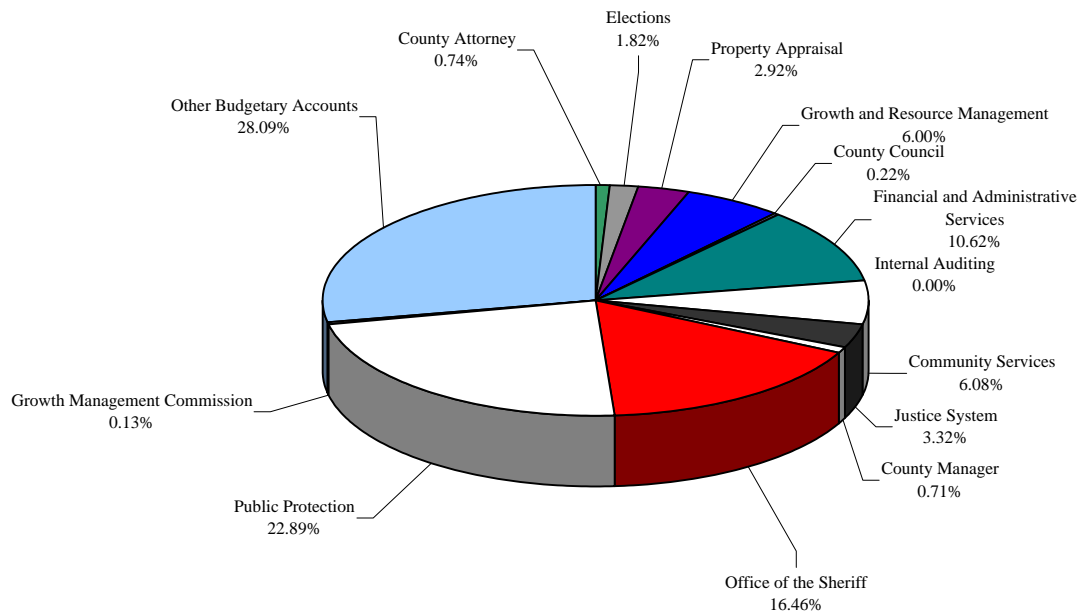
General Fund Revenues By Major Source		
Fiscal Year 2007-08		
Taxes	\$	153,584,440
Licenses and Permits		525,676
Intergovernmental Revenues		11,727,522
Charges for Services		21,641,215
Fines and Forfeitures		4,472,374
Miscellaneous Revenues		7,814,718
Non-Revenues		
Donations		2,500
Transfers from Other Funds		7,239,542
Proceeds from Notes Payable		1,618,760
Appropriated Fund Balance		34,814,309
TOTAL REVENUES	\$	243,441,056

VOLUSIA COUNTY, FLORIDA

General Fund Expenditures By Department

Fiscal Year 2007-08

\$243,441,056



General Fund Expenditures By Department Fiscal Year 2007-08

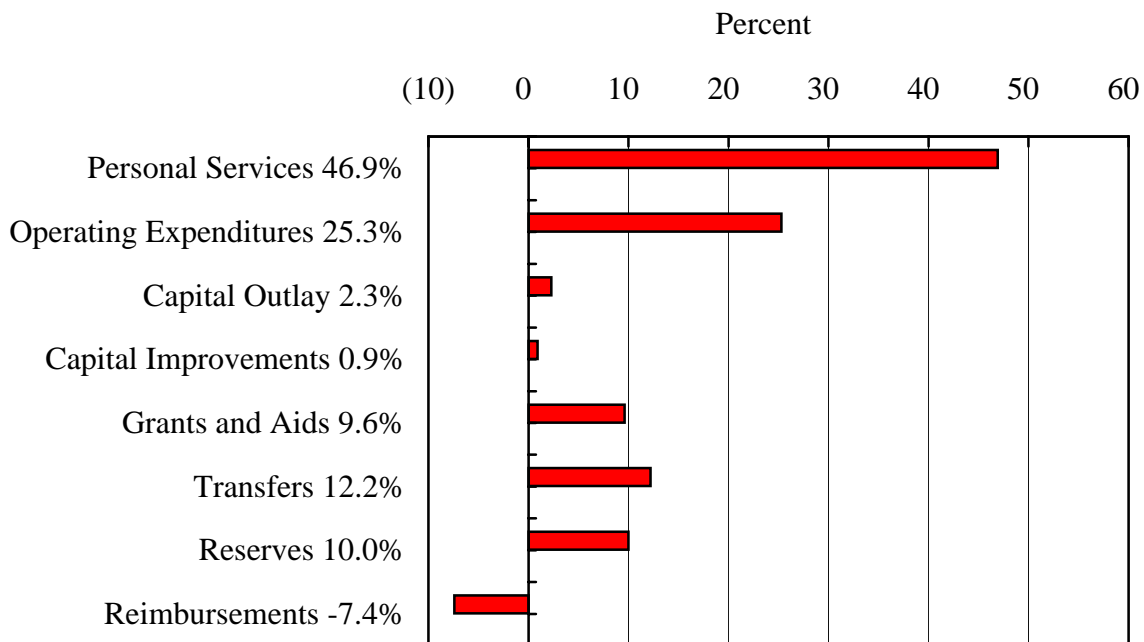
County Council	\$	531,349	Justice System	8,085,918
County Manager		1,723,674	Office of the Sheriff	40,073,012
County Attorney		1,796,570	Public Protection	55,726,259
Elections		4,432,354	Community Services	14,802,412
Internal Auditing		9,755	Financial and Administrative Services	25,836,000
Property Appraisal		7,099,745	Other Budgetary Accounts	68,395,200
Growth Management Commission		318,493		
Growth and Resource Management		14,610,315		
TOTAL EXPENDITURES				\$ 243,441,056

VOLUSIA COUNTY, FLORIDA

General Fund Expenditures By Category

Fiscal Year 2007-08

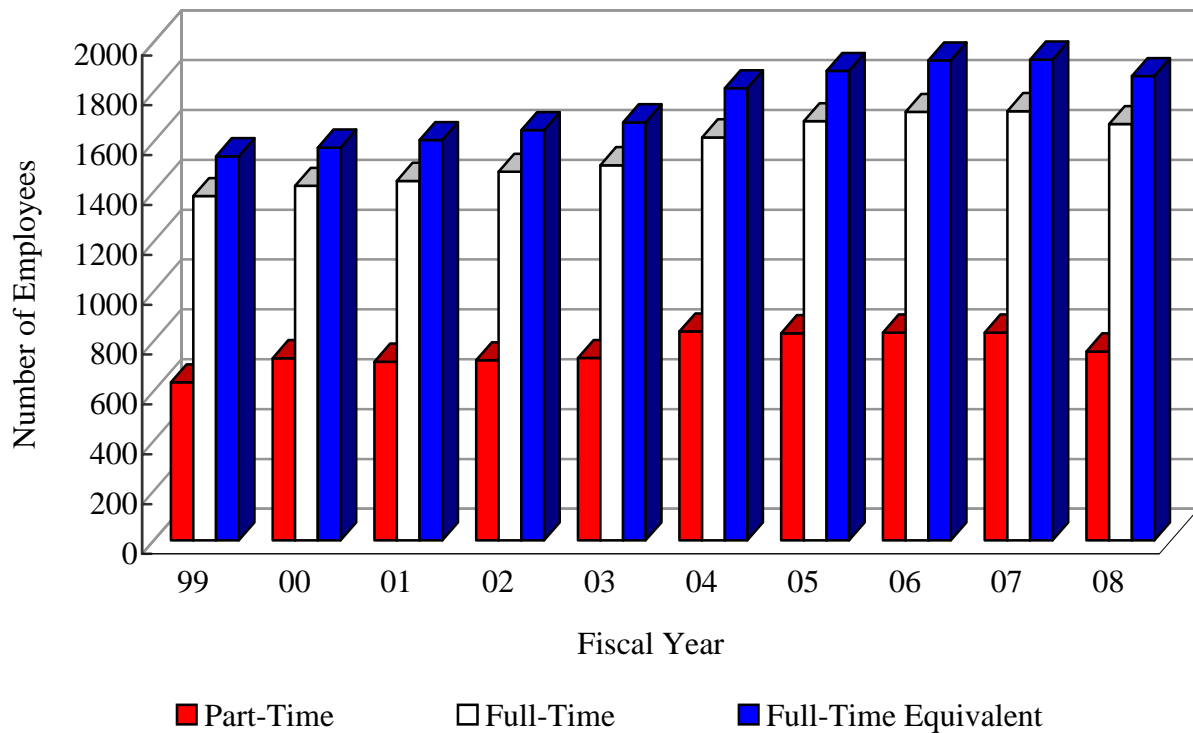
\$243,441,056



General Fund Expenditures By Category Fiscal Year 2007-08		
Personal Services	\$	114,465,165
Operating Expenditures		61,628,881
Capital Outlay		5,503,433
Subtotal Operating Expenses	\$	181,597,479
Capital Improvements		2,273,073
Grants and Aids		23,456,623
Transfers		29,749,272
Reserves		24,426,165
TOTAL EXPENDITURES	\$	261,502,612
Service Charge Reimbursements		(18,061,556)
NET EXPENDITURES	\$	243,441,056

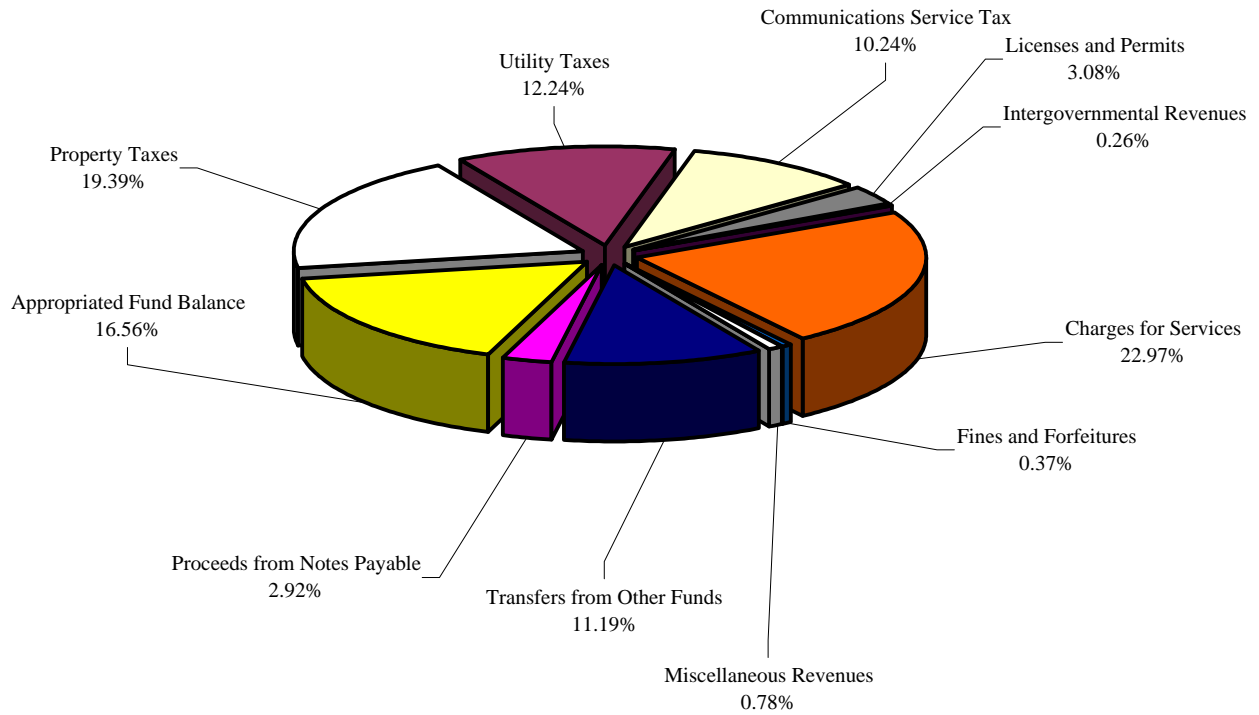
VOLUSIA COUNTY, FLORIDA

General Fund Personnel Authorizations



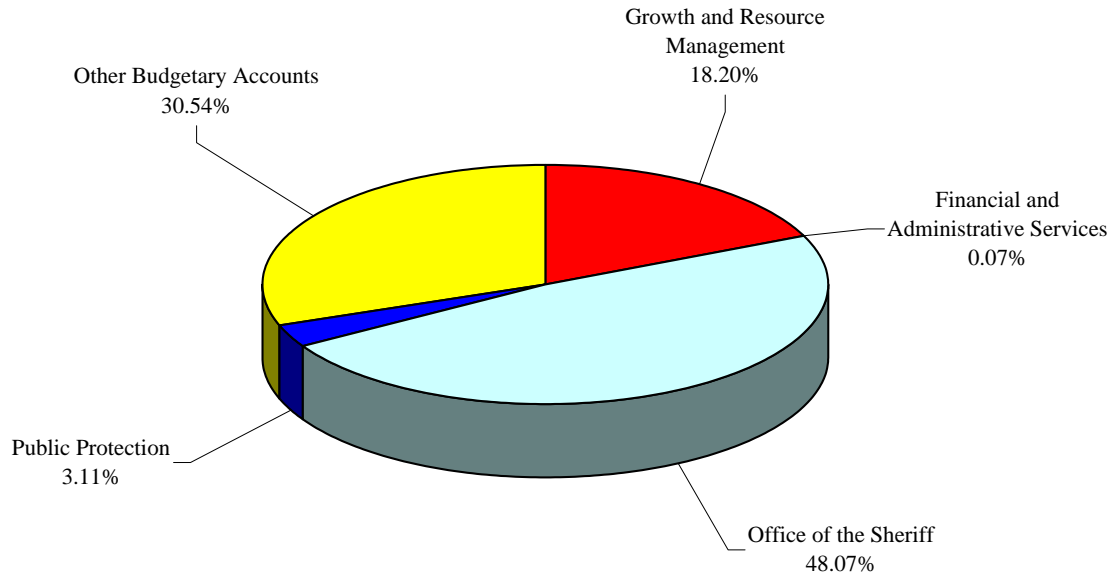
General Fund Personnel Authorizations FY 1997-98 to FY 2007-08			
Year	Part-time	Full-time	Full-time Equivalent
1998-99	634	1,381	1,541
1999-00	731	1,422	1,576
2000-01	717	1,442	1,606
2001-02	723	1,479	1,646
2002-03	732	1,505	1,677
2003-04	838	1,617	1,814
2004-05	831	1,682	1,883
2005-06	834	1,719	1,926
2006-07	834	1,722	1,929
2007-08	758	1,670	1,863

VOLUSIA COUNTY, FLORIDA
Municipal Service District Revenues By Major Source
Fiscal Year 2007-08
\$57,047,727



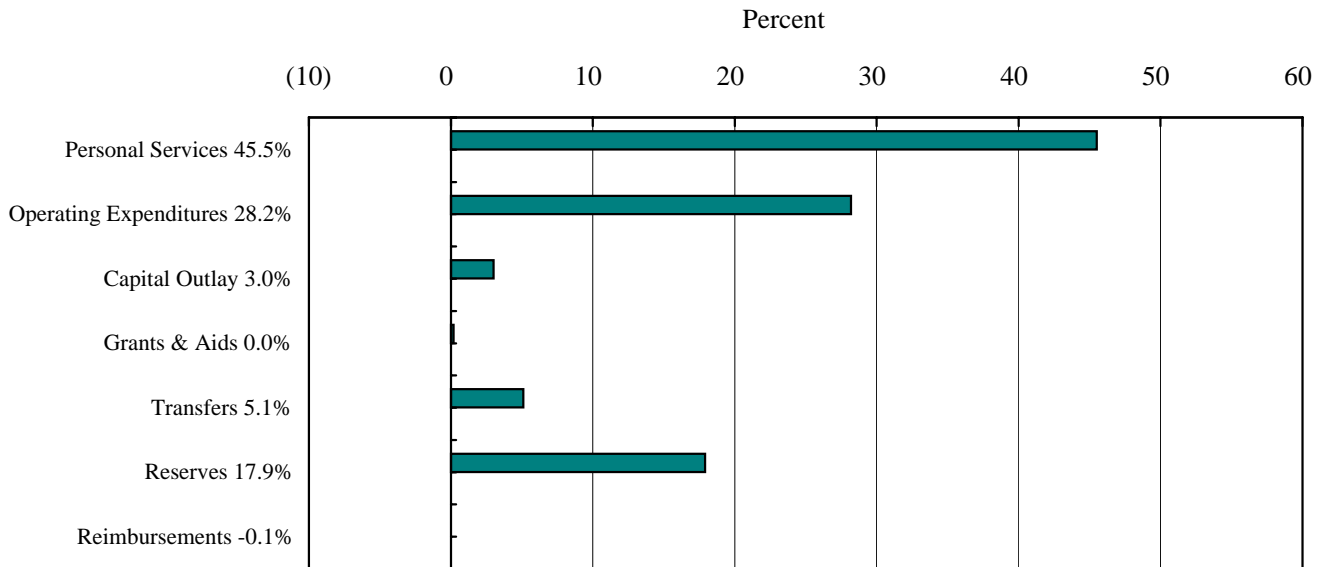
Municipal Service District Revenues By Major Source		
Fiscal Year 2007-08		
Property Taxes	\$	11,061,009
Utility Taxes		6,982,500
Communications Service Tax		5,843,250
Licenses and Permits		1,755,119
Intergovernmental Revenues		147,500
Charges for Services		13,101,883
Fines and Forfeitures		213,000
Miscellaneous Revenues		447,000
Non-Revenues		
Transfers from Other Funds		6,383,337
Proceeds from Notes Payable		1,668,519
Appropriated Fund Balance		9,444,610
TOTAL REVENUES	\$	57,047,727

VOLUSIA COUNTY, FLORIDA
Municipal Service District Expenditures By Department
Fiscal Year 2007-08
\$57,047,727



Municipal Service District Expenditures By Department Fiscal Year 2007-08			
Growth and Resource Management	\$ 10,385,260	Financial and Administrative Services	40,051
Office of the Sheriff	27,424,295	Public Protection	1,773,200
		Other Budgetary Accounts	17,424,921
		TOTAL EXPENDITURES \$ 57,047,727	

VOLUSIA COUNTY, FLORIDA
Municipal Service District Expenditures By Category
Fiscal Year 2007-08
\$57,047,727

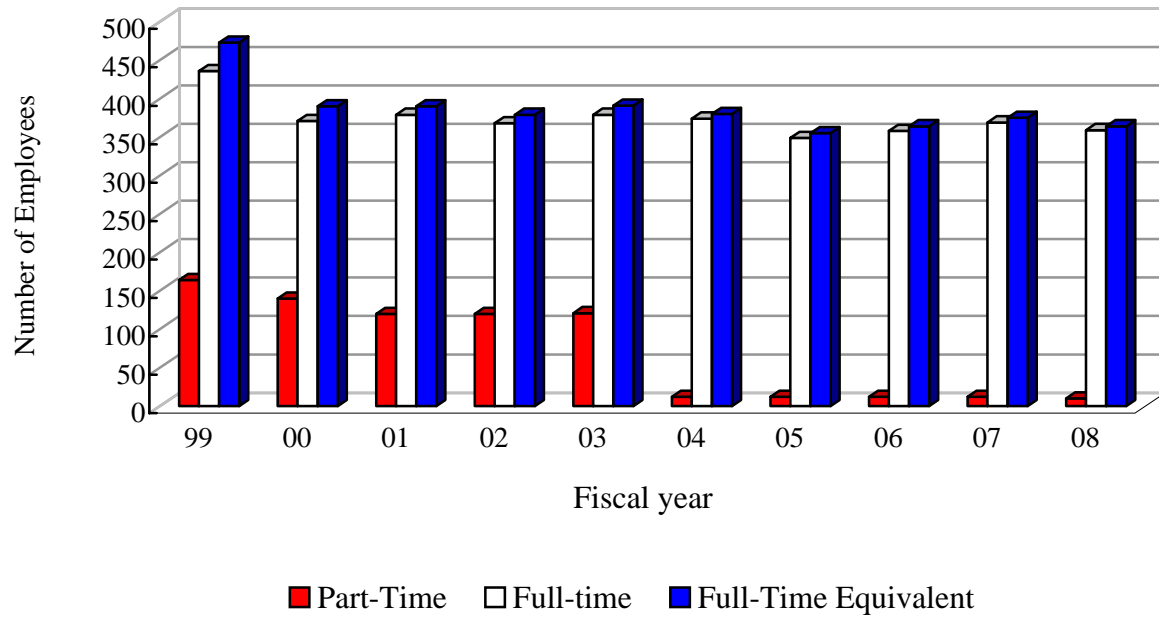


Municipal Service District Expenditures By Category Fiscal Year 2007-08	
Personal Services	\$ 25,983,144
Operating Expenditures	16,107,570
Capital Outlay	1,728,954
Subtotal Operating Expenses	\$ 43,819,668
Grants & Aids	117,325
Transfers	2,925,051
Reserves	10,185,683
TOTAL EXPENDITURES	\$ 57,047,727
Service Charge Reimbursements	0
NET EXPENDITURES	\$ 57,047,727

VOLUSIA COUNTY, FLORIDA

Municipal Service District

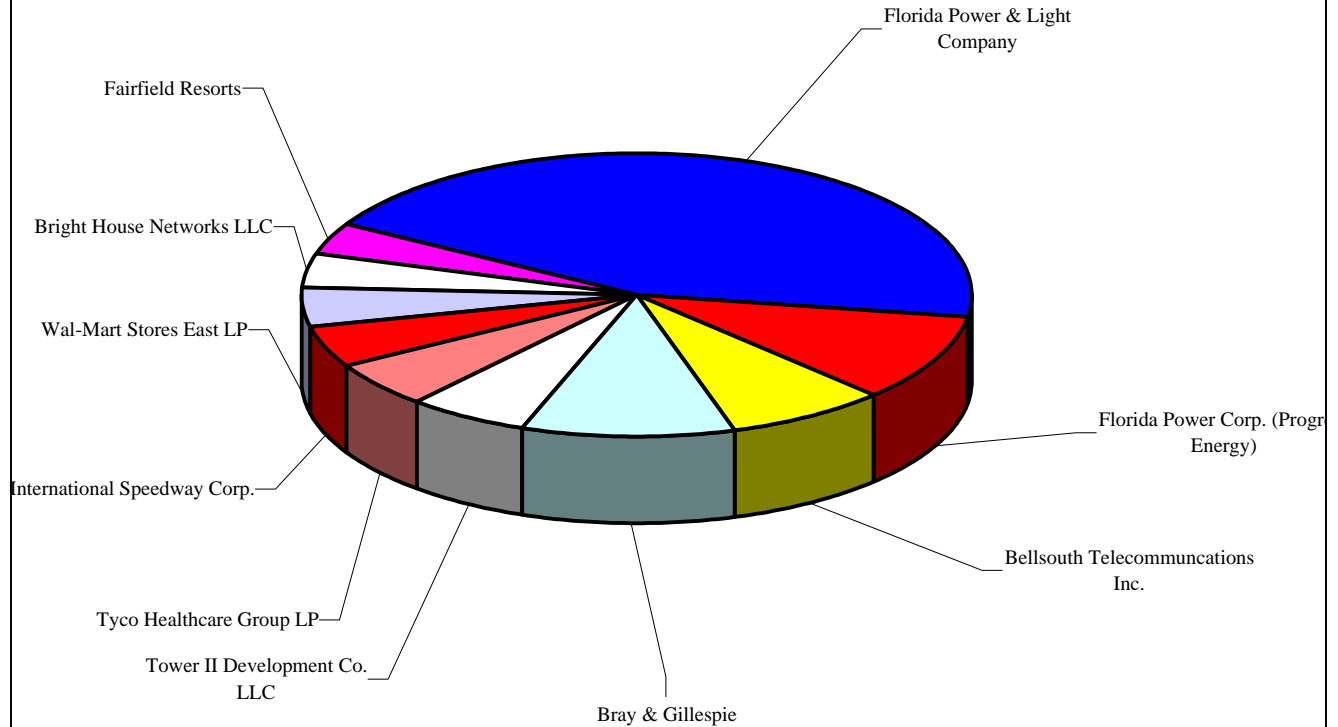
Personnel Authorizations



Municipal Service District Personnel Authorizations FY 1998-99 to FY 2007-08			
Year	Part-time	Full-time	Full-time Equivalent
1998-99	164	436	473
1999-00	140	371	390
2000-01	120	379	390
2001-02	120	368	379
2002-03	121	379	391
2003-04	12	374	380
2004-05	12	349	355
2005-06	12	358	364
2006-07	12	369	375
2007-08	10	359	364

VOLUSIA COUNTY, FLORIDA

Top Ten Taxable Values - By Owner
Fiscal Year 2007-08



Top Ten Taxable Values - By Owner			
Fiscal Year 2007-08			
Owner	Taxable Value	% of Total Taxable Value	
Florida Power & Light Company	\$ 871,820,316	2.1%	
Bray & Gillespie	198,343,488	0.5%	
Florida Power Corp. (Progress Energy)	197,760,126	0.5%	
Bellsouth Telecommunications Inc.	154,476,150	0.4%	
Tower II Development Co. LLC	119,636,723	0.3%	
Tyco Healthcare Group LP	98,728,678	0.2%	
International Speedway Corp.	96,532,196	0.2%	
Wal-Mart Stores East LP	89,046,120	0.2%	
Bright House Networks LLC	76,268,106	0.2%	
Fairfield Resorts, Inc.	69,582,894	0.2%	
All others	38,777,046,763	95.2%	
Total Countywide Taxable Value	\$ 40,749,241,560		