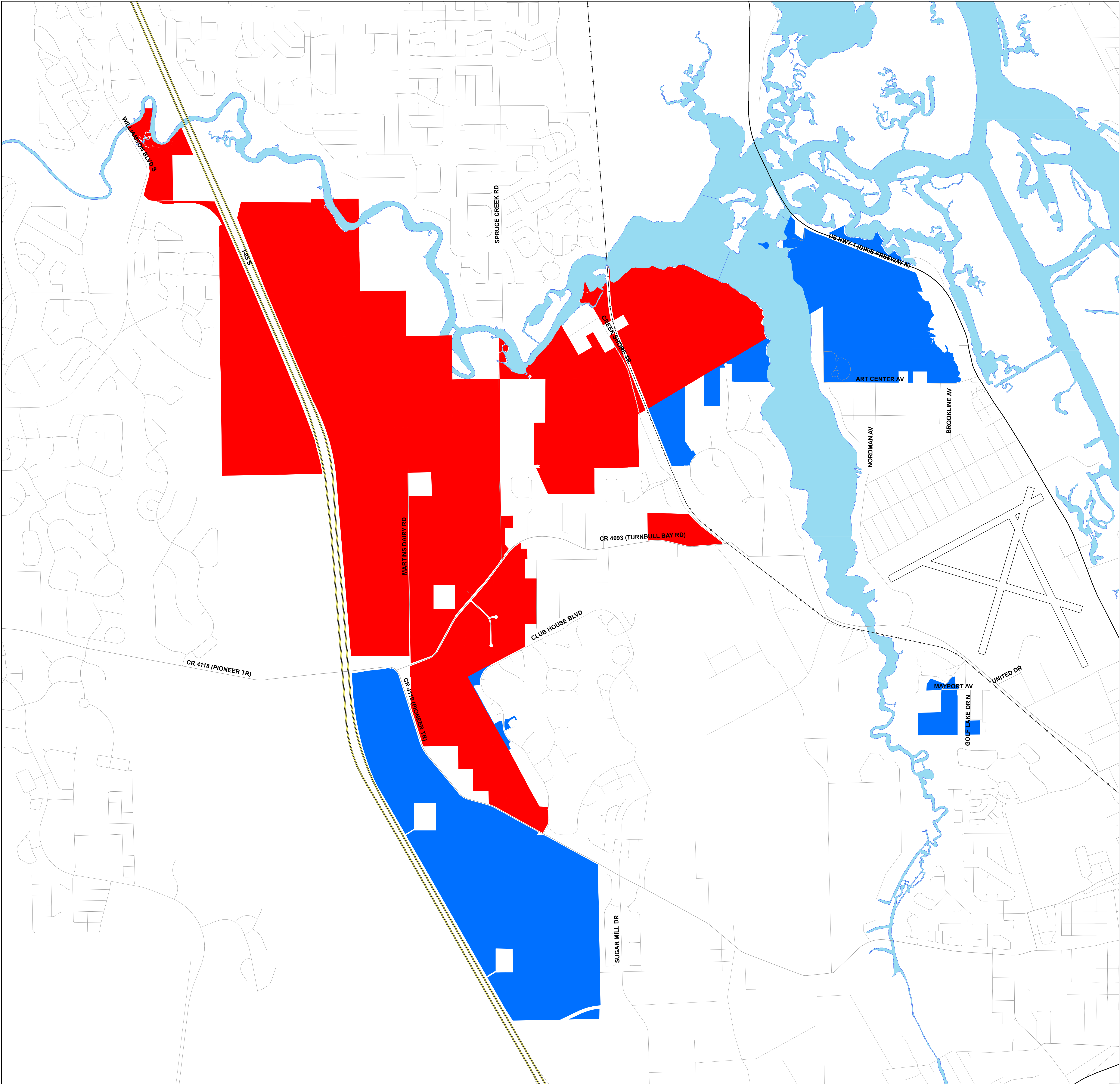


Port Orange



Legend

- Landcover with Florida Scrub Jays
- Scrub Natural Communities

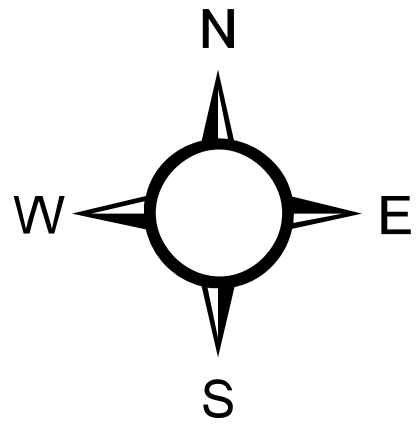
The parcels in red are identified by Florida Natural Areas Inventory (FNAI) and/or Volusia County as landcover with Florida scrub jays.

Parcels in blue are identified by FNAI and/or Volusia County as Scrub natural communities (oak scrub, sand pine scrub, scrubby flatwoods, xeric hammock, coastal strand.) There is the potential for these parcels to be occupied by the Florida scrub jay. Volusia County would suggest a five day scrub-jay survey be carried out on these parcels, following the United States Fish and Wildlife Service Survey Guidelines.

Also, there is the potential for scrub jays to occur on sites not identified by red or blue in the FNAI survey. Since the 2004 hurricanes, the United States Fish and Wildlife Service (FWS) has suggested that scrub jays may occupy sites where they were not previously recorded; therefore, if scrub oaks are identified on site there is the potential for scrub jays to occupy the site and we would recommend a scrub-jay survey be carried out.

Information on the FWS Florida scrub jay survey requirements can be found on <http://northflorida.fws.gov/>

This map indicates scrub jay sightings up to March 27, 2006. Maps are updated as new scrub jay sightings are reported.



Updated May 2010