



Wetlands Discussion

PLDRC

June 9, 2015

Wetlands

- Wetlands filter pollution and help clean surface water.
- An acre of wetlands can store and treat 1 - 1.5 million gallons of floodwater.
- 75 % of commercially harvested fish and shellfish in the U.S. are dependent on wetlands for their reproductive cycle.
- 90% of recreational fish catch are dependent on wetlands for their reproductive cycle.
- One-half of all North American bird species nest or feed in wetlands.

Sec. 72-881. - Purpose and intent.

“It is the purpose and intent of this regulation to provide for the protection, maintenance, enhancement and utilization of wetlands within Volusia County, recognizing the rights of individual property owners to use their lands in a reasonable manner as well as the right of all citizens to protection and purity of the waters of Volusia County and their associated wetland ecosystems.”

Wetlands

DRC Waivers

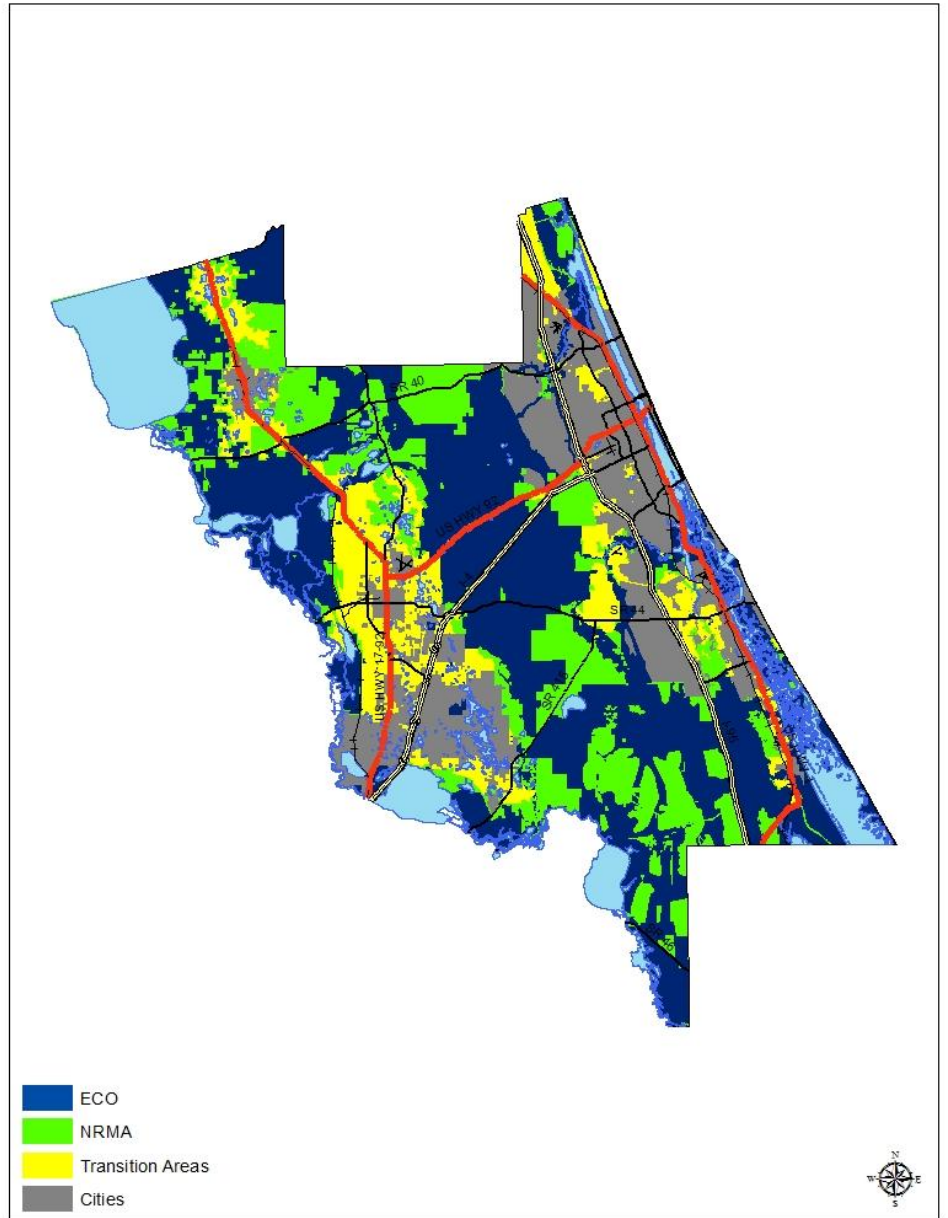
Provisions of the county's wetlands ordinance may be waived by the DRC if strict application would be unreasonable, create an undue hardship, or stifle innovation. (Sec. 72-501(b)(3)(c).

Environmental Core Overlay

Natural Resource
Management Area

Unincorporated:
Transition

Cities



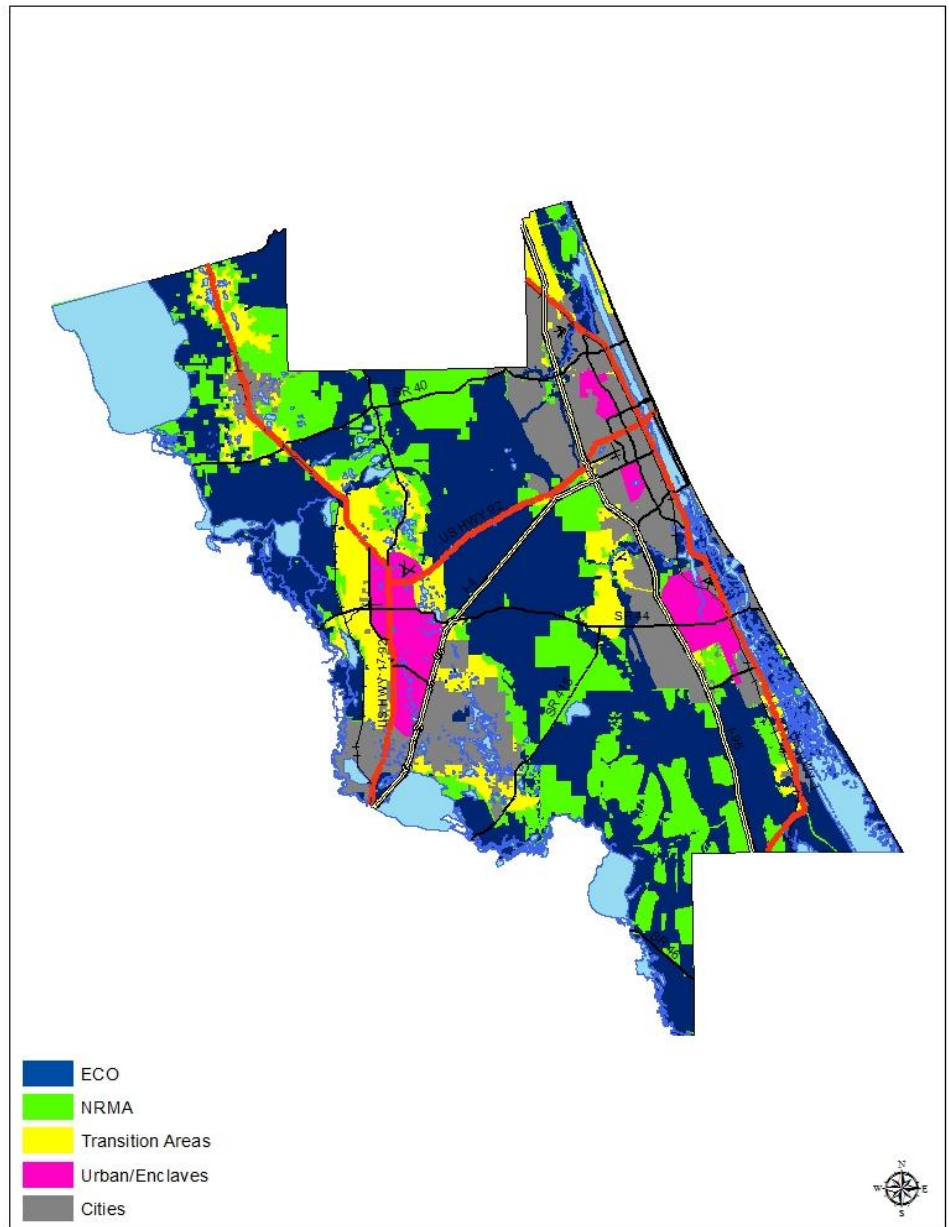
Environmental Core Overlay

Natural Resource
Management Area

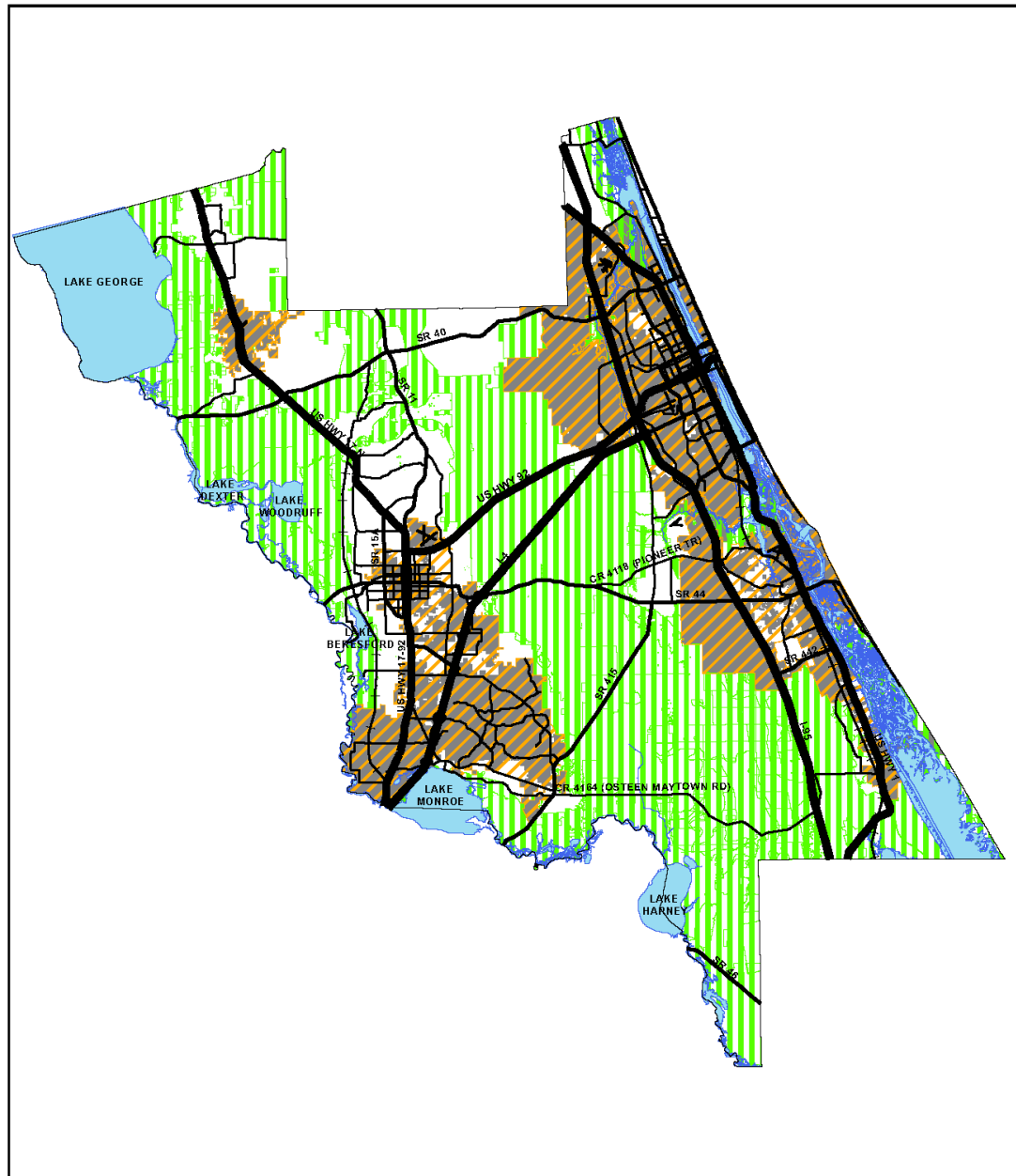
Unincorporated:
Transition





Enclaves/Infill

Cities



Wetland Review Map



-  Priority (ECO, NRMA, & Outstanding Florida Waters)
 Intermediate
 Infill
 Cities



REVIEW LEVEL	LOCATION	WETLAND ANALYSIS	WETLAND MITIGATION	BUFFER LOCATION	BUFFER MITIGATION	REVIEW & PERMIT PROCESS
PRIORITY WETLAND REVIEW APPLIES IN CITIES AND COUNTY SURVIVES ANNEXATION PROPERTY OWNER MAY PETITION FOR RECLASSIFICATION TO INTERMEDIATE REVIEW	ECO AREAS NRMA AREAS OUTSTANDING FLORIDA WATERS OTHER PRIORITY WATERWAYS	UMAM Determine quality & function Accept UMAM analysis accepted by State	Avoid & Minimize to extent practicable CREDIT for State mitigation Local mitigation may be greater than State mitigation Appeals to DRC	50 FEET	LOCAL BUFFER MITIGATION REQUIRED Impacts to non-functioning buffer areas will not require mitigation Appeals to DRC	LOCAL REVIEW REQUIRED LOCAL PERMIT REQUIRED FOR IMPACTS
INTERMEDIATE WETLAND REVIEW	UNINCORPORATED AREAS ONLY NOT IN PRIORITY WETLAND REVIEW NOT IN BASIC WETLAND REVIEW	UMAM Determine quality & function Accept UMAM analysis accepted by State	CREDIT for State mitigation Site specific mitigation based on quality and function Appeals to DRC	25 FEET	LOCAL BUFFER MITIGATION REQUIRED Buffer may be reduced based on quality and function Impacts to non-functioning buffer areas will not require mitigation Appeals to DRC	LOCAL REVIEW REQUIRED LOCAL PERMIT REQUIRED FOR IMPACTS
BASIC WETLAND REVIEW	EXISTING URBAN AREAS FUTURE INFILL AREAS	NO LOCAL WETLANDS ANALYSIS REQUIRED CITIES MAY ADOPT STRICTER STANDARDS	NO LOCAL WETLANDS MITIGATION REQUIRED CITIES MAY ADOPT STRICTER STANDARDS	NO LOCAL BUFFER REQUIRED CITIES MAY ADOPT STRICTER STANDARDS	NO LOCAL BUFFER MITIGATION REQUIRED CITIES MAY ADOPT STRICTER STANDARDS	NO LOCAL REVIEW REQUIRED NO LOCAL PERMIT REQUIRED CITIES MAY ADOPT STRICTER STANDARDS