


VOLUSIA COUNTY
PUBLIC WORKS DEPARTMENT

TRAFFIC ENGINEERING DIVISION

JON CHENEY, TRAFFIC ENGINEER

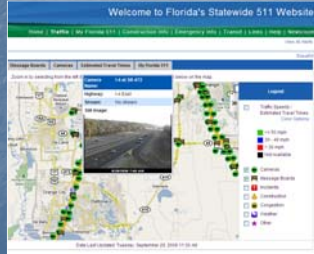
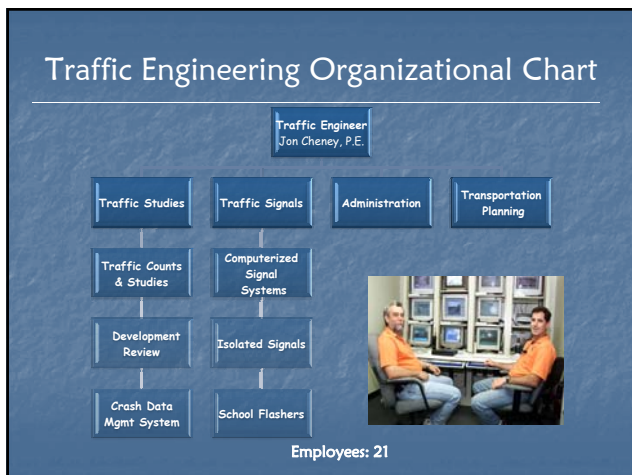


Traffic Engineering Division

Provides for the safe and efficient movement of both vehicular and pedestrian traffic throughout the County.

- 419 traffic signals and flashers
- Traffic Management
 - 29 coordinated traffic signal systems
 - 12 local & 100 traffic monitoring cameras
- Reduced Speed School Zone signals

Consolidated Services Countywide, except Daytona Beach & Deltona


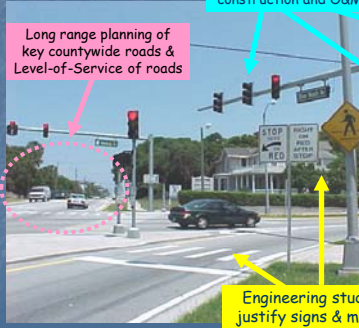




What do we do??

Long range planning of key countywide roads & Level-of-Service of roads

Traffic signals and systems design, construction and O&M

Engineering studies to justify signs & markings

Challenges

Special Events

Disasters & evacuations

VOLUSIA COUNTY METROPOLITAN AREA Highway Capacity Analysis

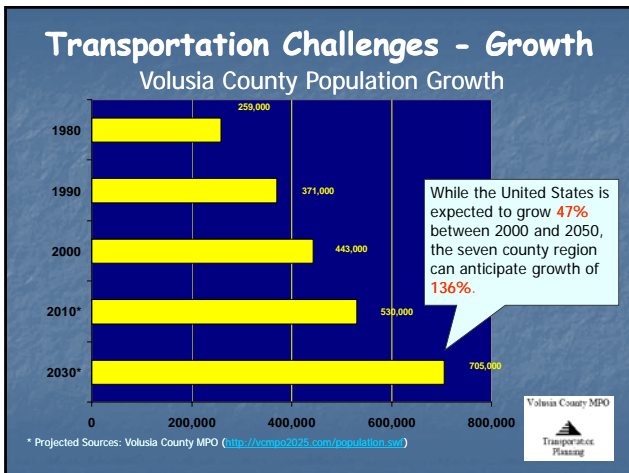
Future (Year 2025) Network Deficiencies

Transportation Challenges - Congestion

2025 Roadway Deficiencies

Future Conditions

- The transportation network and the traffic volumes are based on 2025 Central Florida Regional Planning Model (CFRPM)
- The population and employment data is based on the CFRPM
- Model generated V/C ratios are used to determine network deficiencies



VOLUSIA COUNTY METROPOLITAN AREA Highway Capacity Analysis

Future (Year 2050) Network Deficiencies

Transportation Challenges - Congestion

2050 Roadway Deficiencies

Future Conditions

- The transportation network and the traffic volumes are based on 2050 Central Florida Regional Planning Model (CFRPM)
- The population and employment data is based on the CFRPM
- Model generated V/C ratios are used to determine network deficiencies

- Transportation Needs - Regional Studies: SE

Traffic Engineering Division

Current Issues

- Update to 20 Year MPO Long Range Transportation Plan & Florida DOT reallocation of federal/state funding to Strategic Intermodal System (SIS)
 - 6 of 7 Council members on MPO Board
- COMP Plan Amendments (additions/deletions to County Thoroughfare System)
- Growth Management Legislation vs Hometown Democracy
- Cost Saving & Greenhouse Gas Reduction Programs:
 - Signal power – County LED's replacement complete
City LED replacement?? 135 watts vs 10 watts
 - Replacement of obsolete signal controller equipment & MSDOS Computerized Signal System (underway)
 - Signal Retiming (system & isolated)
- Variable work load in cities

- Transportation Needs - Regional Studies: SW

QUESTIONS?

<http://www.ltsbenefits.lts.dot.gov/lts/benefcost.nsf/ID/5551ECB16B1BC9698525725F007A75D07?OpenDocument&Query=Home>
<http://ntl.bts.gov/lib/jpodocs/brochure/14321.htm#b1>