

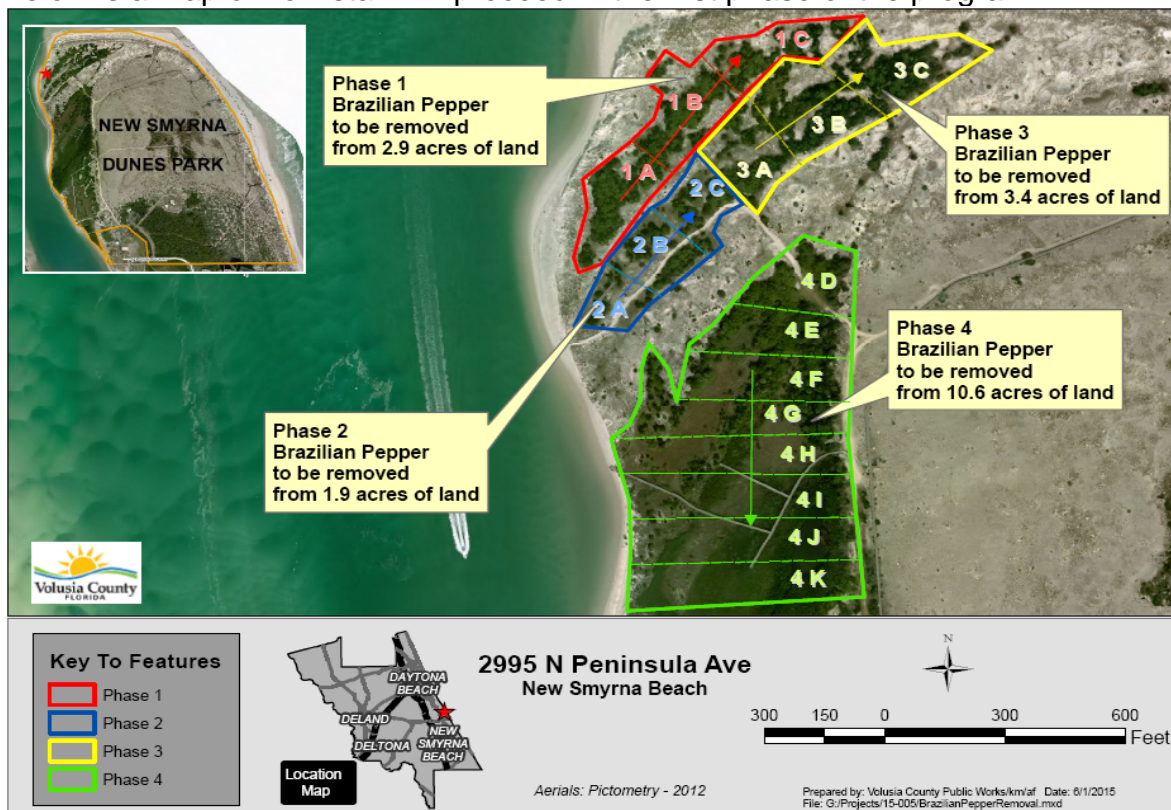


## Brazilian Pepper Eradication Efforts Smyrna Dunes Park

Brazilian Pepper is an invasive plant species found at Smyrna Dunes Park. This is a fast growing plant species forming a dense canopy, creating poor habitat for native wildlife and shading out nearly all other plant life.

Park staff will initiate a Brazilian Pepper eradication program on Fri, June 26<sup>th</sup>, 2015 and continue on each Friday thereafter until further notice. This program is in support of the park's management plan for the control and eradication of invasive species.

Below is a map of how staff will proceed in the first phase of the program:



For additional information:

### Smyrna Dunes Park Management Plan

[http://www.dep.state.fl.us/lands/ARC/Small%20Management%20Plans/2015/Smyrna\\_Dunes.pdf](http://www.dep.state.fl.us/lands/ARC/Small%20Management%20Plans/2015/Smyrna_Dunes.pdf)

### Florida Fish and Wildlife Conservation Commission info on Brazilian Pepper

<http://myfwc.com/wildlifehabitats/invasive-plants/weed-alerts/brazilian-pepper/>

### Volusia County Exotic Plant Removal Information

<http://www.volusia.org/services/growth-and-resource-management/environmental-management/natural-resources/Native-and-exotic-plants/Exotic%20plant%20removal.stml>