

FISCAL YEAR 2021-22 BUDGET OVERVIEW



September 7, 2021 - 1st Public Budget Meeting



Cost Increases Impacting Volusia County

2

- ❑ \$15.00 minimum wage approved by the voters
- ❑ Increased staffing demand in public safety operations
- ❑ 6.0% inflation in health insurance contributions
- ❑ 6.8% increase in state mandated retirement contributions
- ❑ 8.7% inflation in goods and materials (less food and energy)*
- ❑ 24.5% inflation in energy (fuel and electricity)*
- ❑ 3.1% inflation in contracted services (less energy services)*
- ❑ 12.8% inflation in construction input costs**

Data Sources: *Consumer Price Index Summary – June 2021 (<https://www.bls.gov/news.release/cpi.nr0.htm>) [Accessed July 17, 2021]

**Associated General Contractors of America, Construction Inflation Alert Q1, 2021 (<https://www.agc.org/sites/default/files/AGC%202021%20Inflation%20Alert%20-%20Ver1.1.pdf>)

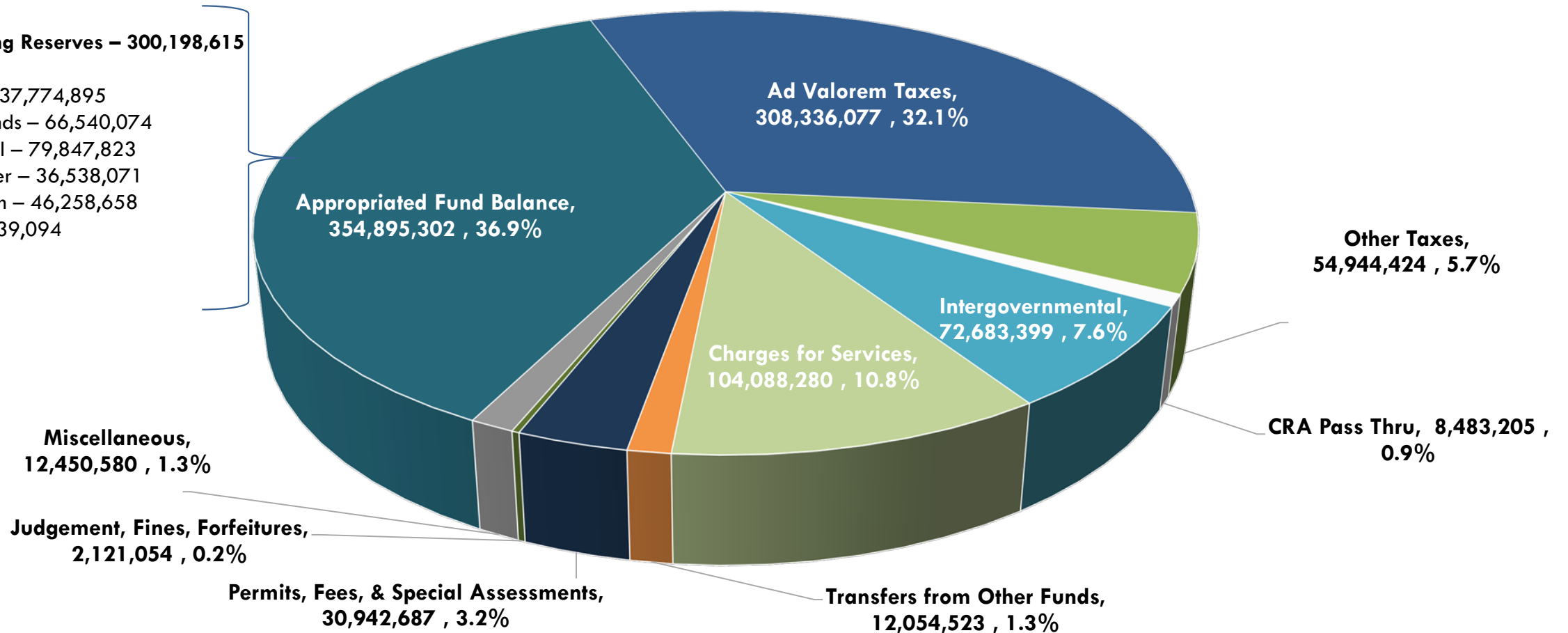
Countywide Operating Revenues

3

Total Operating Revenues - \$960,999,531

Total Operating Reserves – 300,198,615

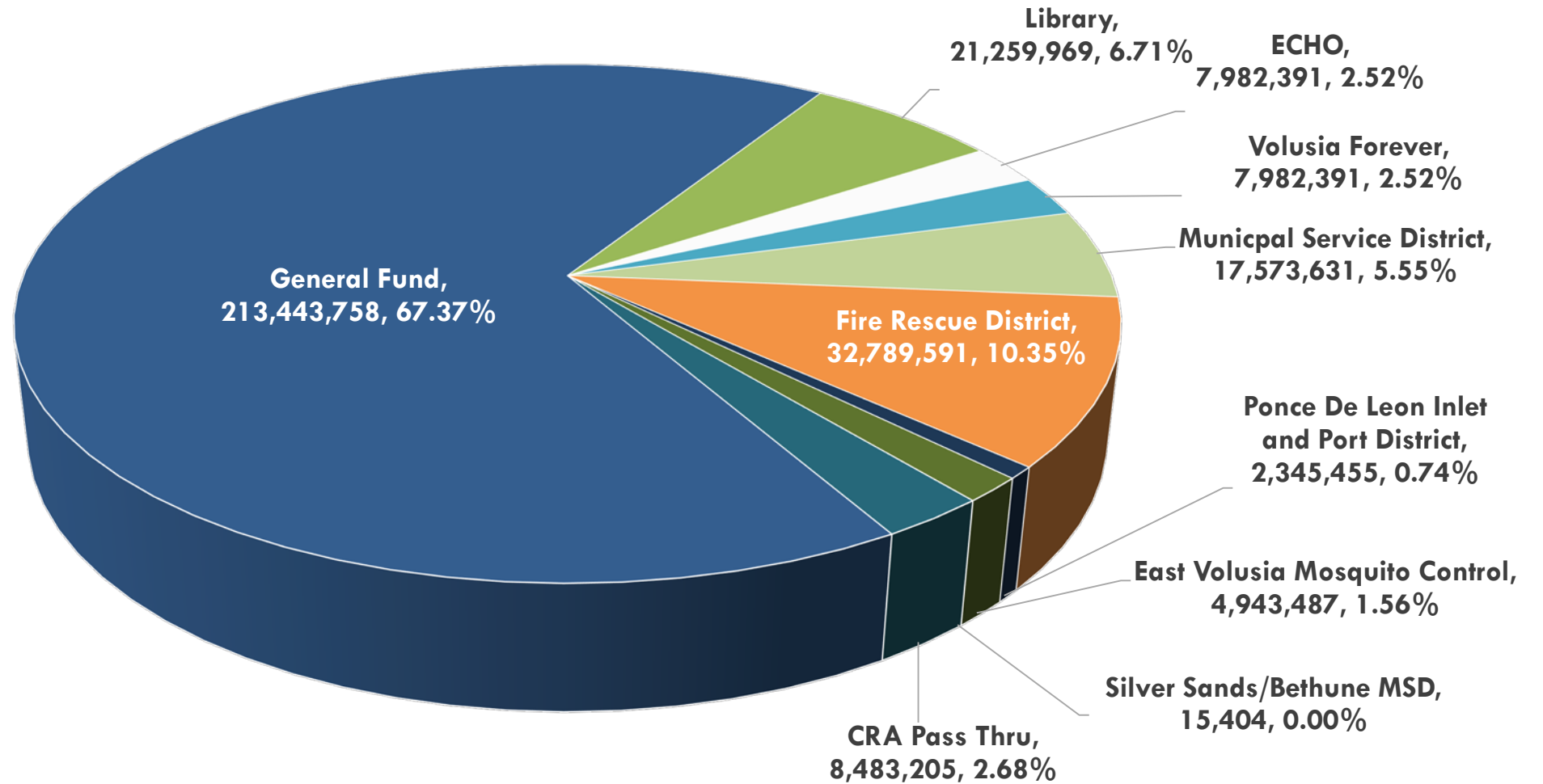
- *Emergency – 37,774,895
- *Enterprise Funds – 66,540,074
- *Future Capital – 79,847,823
- *ECHO/Forever – 36,538,071
- *Transportation – 46,258,658
- *Other – 33,239,094



Ad Valorem Tax Revenue by Fund

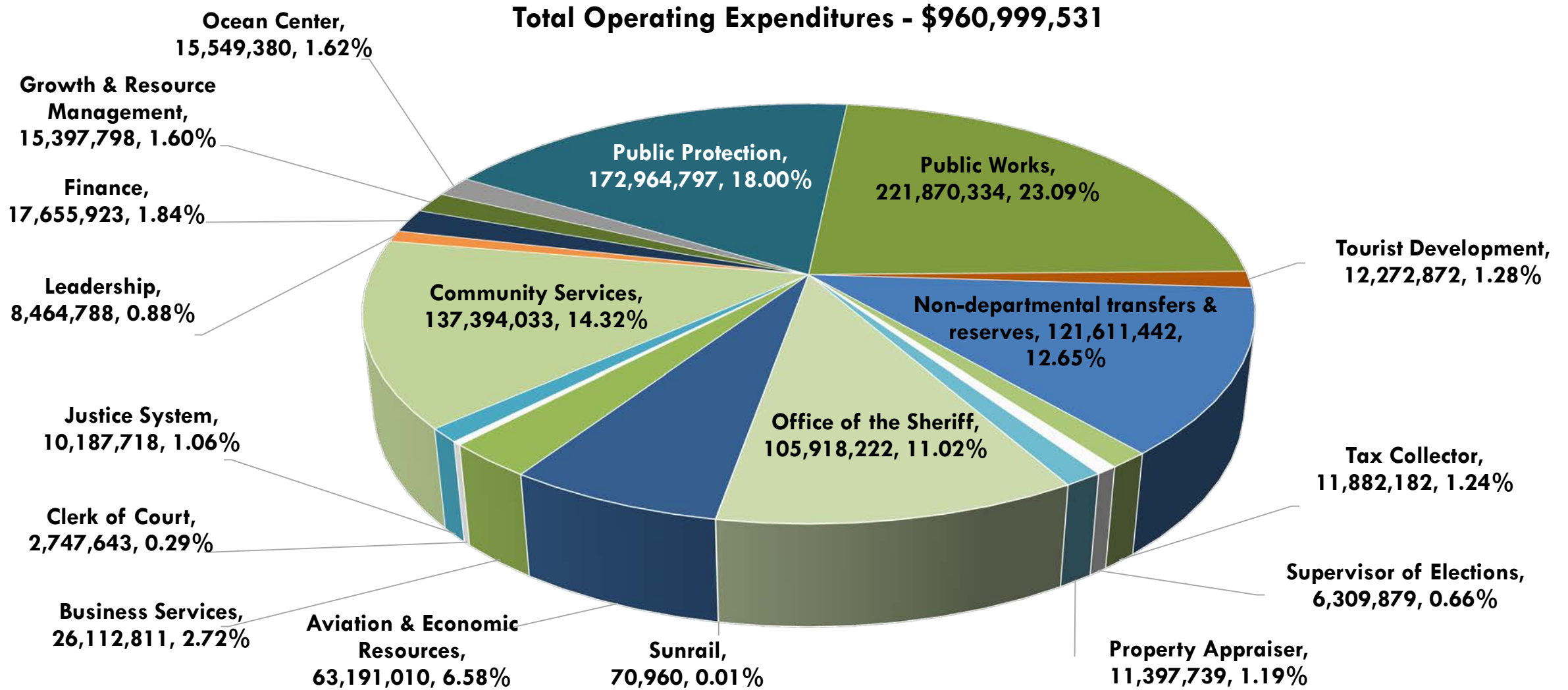
4

Total Ad Valorem Revenues - \$316,819,282



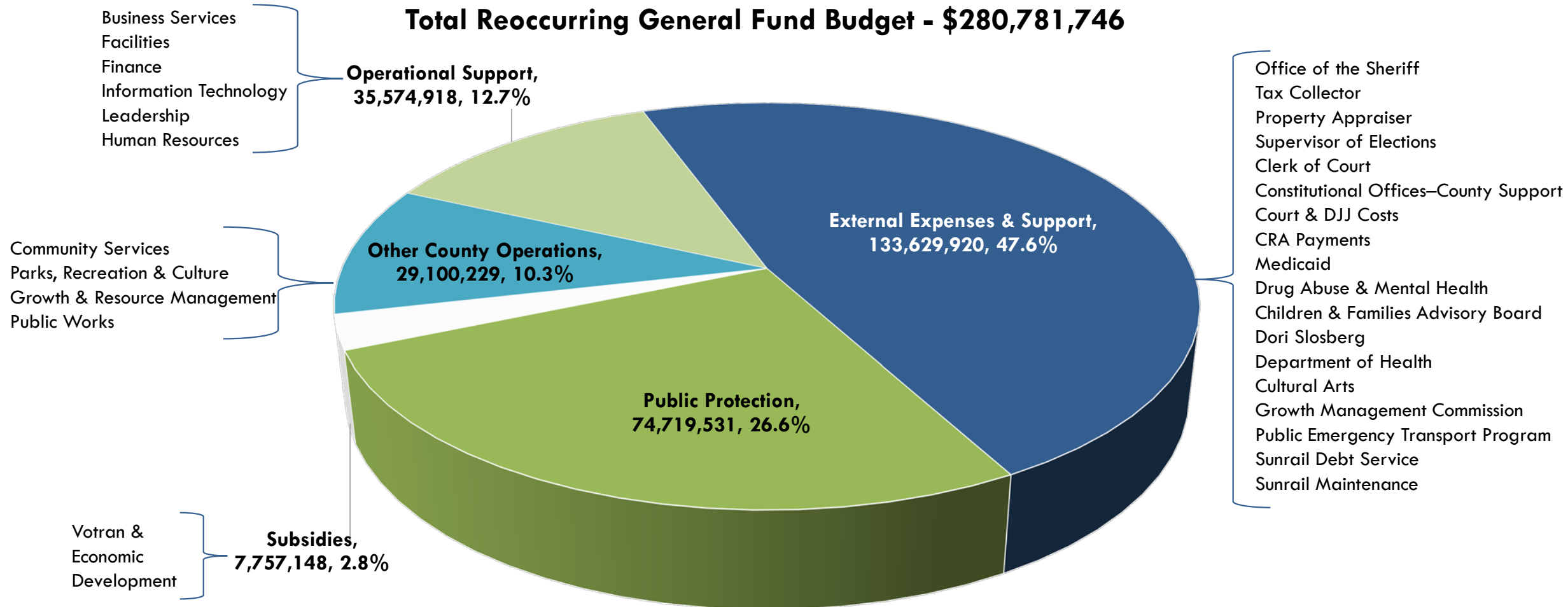
Operating Expenditures by Department

5



General Fund Budget Breakdown - Reoccurring

6



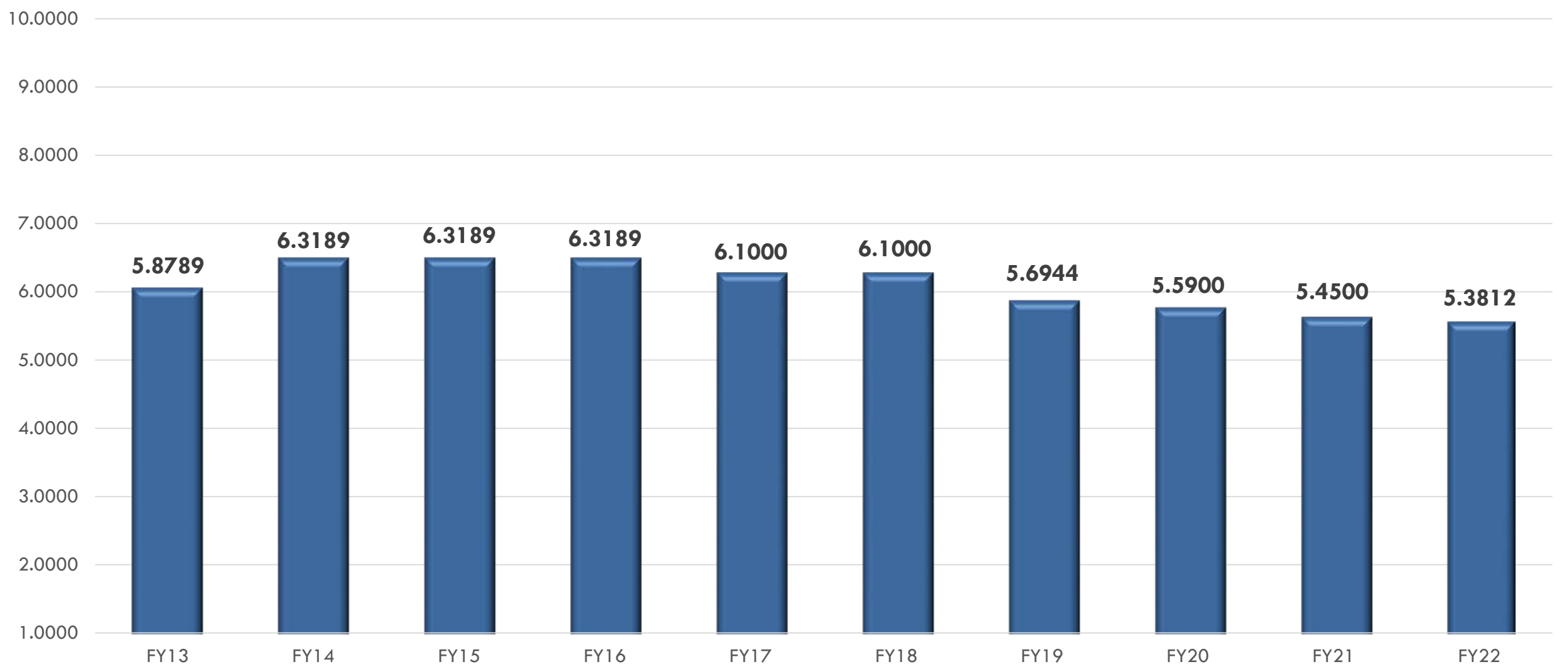
Fiscal Year 2021-22 General Fund

7

Revenue	Amount
Property taxes on new construction	\$5,175,298
Additional property tax revenue at partial rollback	\$7,342,784
Non-property tax revenue increases	\$1,676,366
Use of reserves (one-time savings)	\$5,201,390
Total general fund revenue increase to cover increased expenses	\$19,395,838

Increased Expense	Amount
Constitutional offices/courts – 15.2% increase over prior year	\$13,338,633
County increases – 3.3% increase over prior year	\$6,057,205
Total general fund expense increase	\$19,395,838

History of General Fund Millage Rate



Ranking Volusia Property Taxes – National

9

- <https://taxfoundation.org/state/florida>

Property Taxes Paid as a Percentage of Owner-Occupied
Housing Value

0.94%

Rank: 25

State and Local Property Tax Collections Per Capita

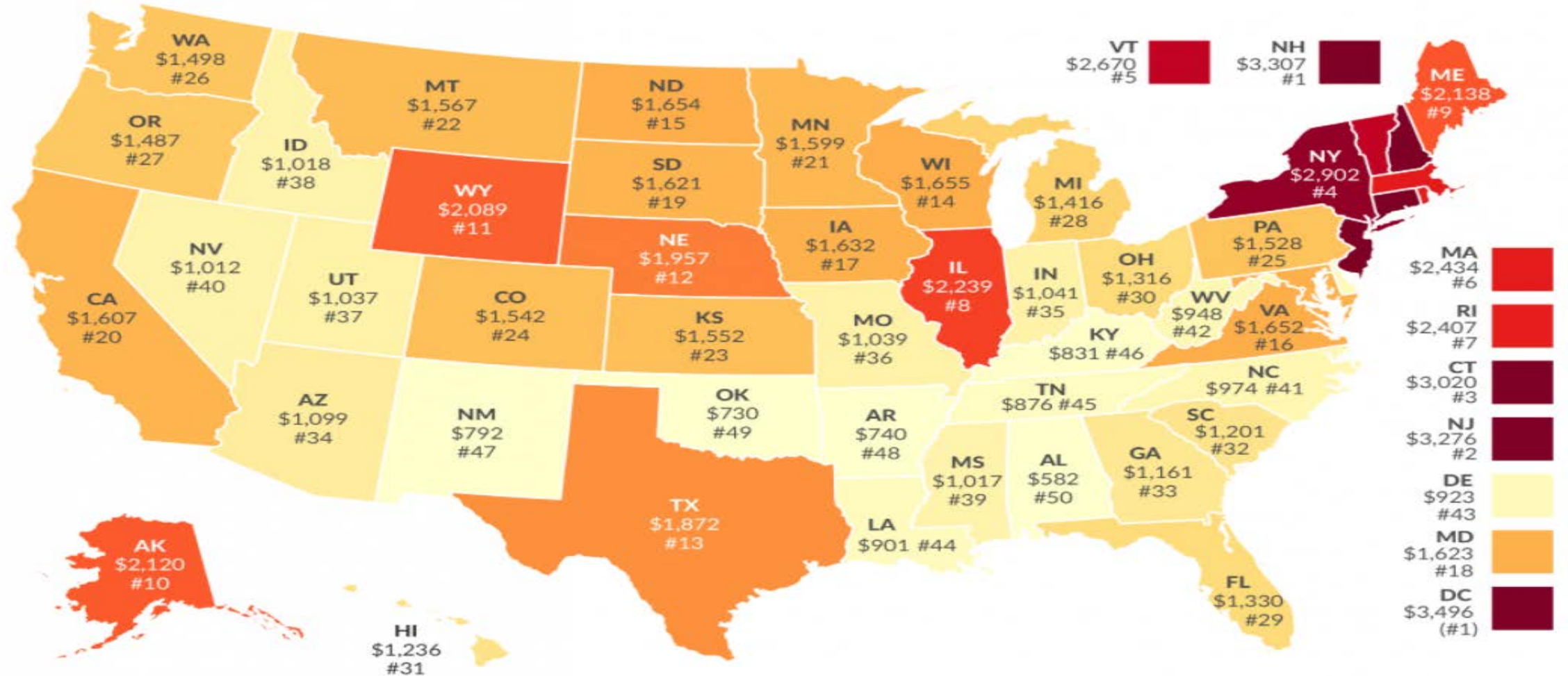
\$1330

Rank: 29

How Much Does Your State Collect in Property Taxes per Capita?

State & Local Property Tax Collections per Capita, Fiscal Year 2017

10



Note: D.C.'s rank does not affect states' ranks, but the figure in parentheses indicates where it would rank if included.

Sources: U.S. Census Bureau, "Annual Survey of State and Local Government Finances"; Tax Foundation calculations.

2019 HOW FLORIDA COUNTIES COMPARE

NOVEMBER 2019

PER CAPITA TOTAL PROPERTY TAX LEVIES FY2018-19

1	Monroe	\$3,338	34	Citrus	\$1,021
2	Walton	\$2,881	35	Taylor	\$1,006
3	Collier	\$2,703	36	Hardee	\$998
4	Martin	\$2,598	37	Hamilton	\$997
5	Palm Beach	\$2,490	38	Putnam	\$956
6	Franklin	\$2,252	39	Glades	\$946
7	Miami-Dade	\$2,040	40	DeSoto	\$923
8	Broward	\$2,011	41	Pasco	\$907
9	Sarasota	\$1,999	42	Polk	\$894
10	Nassau	\$1,846	43	Marion	\$873
11	Indian River	\$1,836	44	Escambia	\$843
12	Lee	\$1,836	45	Levy	\$829
13	Orange	\$1,719	46	Okeechobee	\$819
14	Gulf	\$1,695	47	Highlands	\$786
15	Pinellas	\$1,684	48	Gilchrist	\$782
16	St. Johns	\$1,655	49	Hernando	\$778
17	Manatee	\$1,617	50	Clay	\$778
18	St. Lucie	\$1,604	51	Santa Rosa	\$764
	Statewide	\$1,597	52	Suwannee	\$745
19	Charlotte	\$1,579	53	Columbia	\$672
20	Flagler	\$1,566	54	Jefferson	\$664
21	Volusia	\$1,344	55	Madison	\$650
22	Hillsborough	\$1,337	56	Dixie	\$648
23	Duval	\$1,245	57	Bradford	\$583
24	Alachua	\$1,221	58	Washington	\$582
25	Okaloosa	\$1,212	59	Wakulla	\$581
26	Bay	\$1,185	60	Lafayette	\$545
27	Osceola	\$1,172	61	Baker	\$542
28	Seminole	\$1,159	62	Gadsden	\$526
29	Brevard	\$1,130	63	Liberty	\$477
30	Sumter	\$1,125	64	Jackson	\$468
31	Hendry	\$1,080	65	Calhoun	\$467
32	Lake	\$1,063	66	Holmes	\$375
33	Leon	\$1,049	67	Union	\$273

PER CAPITA COUNTY GOVERNMENT PROPERTY TAX LEVIES FY2018-19

1	Martin	\$1,256.88	34	Taylor	\$495.02
2	Monroe	\$1,232.49	35	Seminole	\$492.61
3	Walton	\$1,020.41	36	Pasco	\$487.20
4	Collier	\$1,005.20	37	Bay	\$459.27
5	Franklin	\$990.99	38	Gilchrist	\$453.20
6	Nassau	\$934.01	39	Hendry	\$435.07
7	Palm Beach	\$879.37	40	Brevard	\$411.68
8	Charlotte	\$830.26	41	Levy	\$411.12
9	Gulf	\$817.23	42	Hernando	\$409.51
10	St. Johns	\$788.92	43	Dixie	\$408.55
11	Miami-Dade	\$757.77	44	Escambia	\$405.78
12	Duval	\$742.97	45	Highlands	\$403.80
13	Indian River	\$717.89	46	Clay	\$393.28
14	Flagler	\$689.35	47	Polk	\$391.22
15	Manatee	\$657.31	48	Okeechobee	\$390.11
16	Orange	\$646.40	49	Suwannee	\$385.02
	Statewide	\$614.64	50	Lake	\$372.26
17	Hillsborough	\$605.53	51	Marion	\$361.93
18	St. Lucie	\$601.64	52	Madison	\$351.88
19	Pinellas	\$580.99	53	Okaloosa	\$349.78
20	Osceola	\$579.58	54	Santa Rosa	\$334.53
21	Glades	\$579.35	55	Jefferson	\$323.03
22	Broward	\$568.16	56	Washington	\$304.20
23	Hamilton	\$562.97	57	Lafayette	\$302.39
24	Sarasota	\$557.79	58	Bradford	\$301.68
25	Lee	\$544.87	59	Wakulla	\$301.17
26	Putnam	\$541.32	60	Columbia	\$294.79
27	Alachua	\$534.93	61	Liberty	\$268.25
28	Hardee	\$529.87	62	Calhoun	\$268.19
29	DeSoto	\$524.72	63	Gadsden	\$266.69
30	Volusia	\$520.96	64	Jackson	\$242.77
31	Leon	\$499.84	65	Baker	\$234.88
32	Sumter	\$496.88	66	Holmes	\$213.00
33	Citrus	\$495.04	67	Union	\$146.80

Ranking Volusia Property Taxes – State (2020)

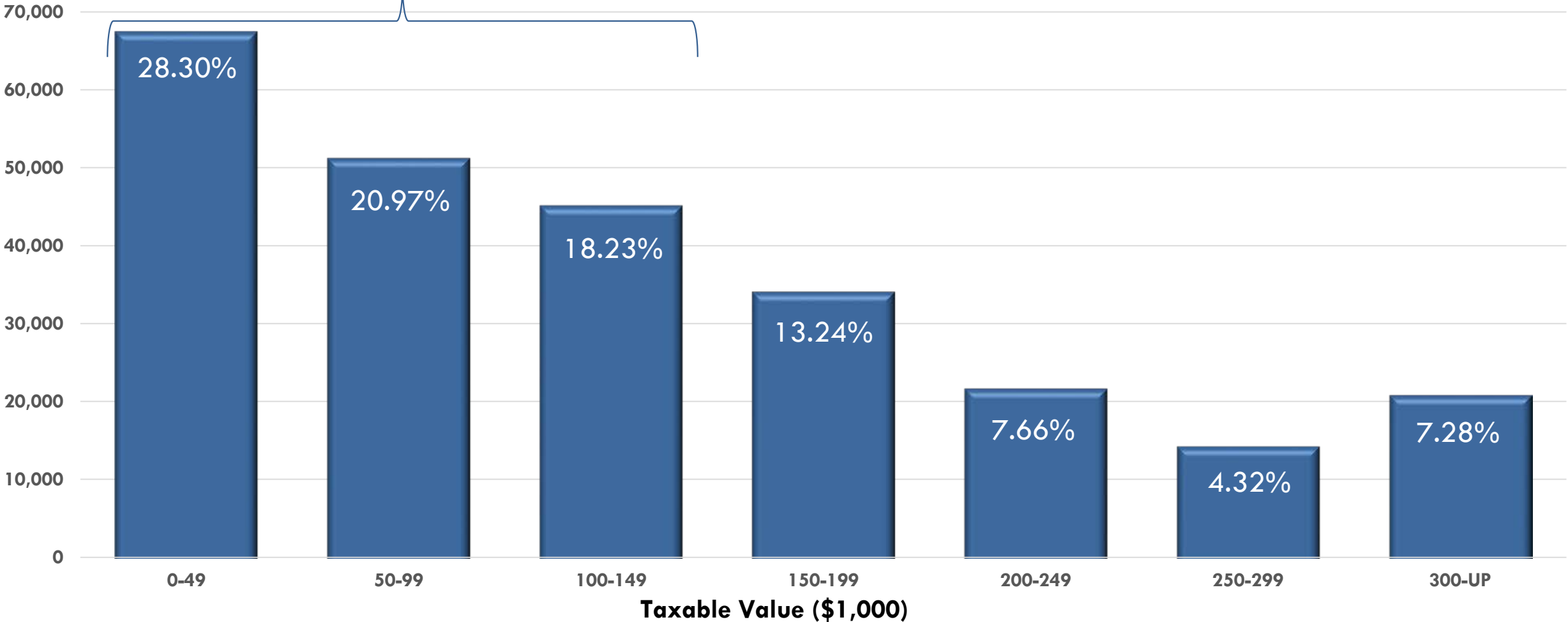
12

- Volusia County's state-wide ranking out of 67 counties:
 - ▣ Population – 11th (16.4%)
 - ▣ Total millage (includes cities & independents) – 6th (9%)
 - ▣ **County government millage – 42nd (62.7%)**
 - ▣ Taxes per resident (County levies) – 35th (52.2%)
 - **Average \$548.22 per resident**

Taxable Value Residential Improved Properties

13

67.5% under \$149,000
in taxable value



Fiscal Year 2021-22 Millage Rates

14

Countywide Funds	Taxable Value FY 2021-22	Adopted FY 2020-21 Millage	Proposed FY 2021-22 Millage	Budget Rate Variance
General Fund	\$42,802,088,936	5.4500	5.3812	(0.0688)
Library	\$42,802,088,936	0.5174	0.5174	-
Volusia Forever (operating & debt)	\$42,802,261,018	0.1835	0.2000	0.0165
Volusia ECHO	\$42,802,261,018	0.0000	0.2000	0.2000
Total Countywide Funds		6.1509	6.2986	0.1477
Special Taxing Districts				
Mosquito Control	\$30,074,306,813	0.1781	0.1781	-
Ponce Inlet Port Authority	\$30,074,356,927	0.0880	0.0845	(0.0035)
Municipal Service District	\$8,691,421,794	2.1083	2.1083	-
Silver Sands-Bethune Beach MSD	\$1,114,267,913	0.0144	0.0144	-
Fire Rescue	\$8,900,627,469	3.8412	3.8412	-
Total Special Taxing Districts		6.2300	6.2265	(0.0035)

Setting the 2nd Public Budget Hearing

15

- Florida Statutes 200.065(2)(e)2 – Hearings must be held after 5:00 pm unless held on Saturday. No hearings can be held on Sunday.
- Cannot be held on the same day as the School Board
 - ▣ School Board's hearing date – September 14, 2021 at 6:00 pm
- Recommended 2nd public hearing date:
 - ▣ September 21, 2021 at 6:00 pm