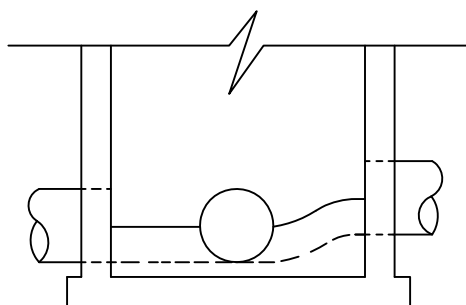


PLAN VIEW



SECTION

NOTES

1. FLOW CHANNELS SHALL HAVE A MINIMUM SLOPE OF 0.30 FEET PER 100 FEET. NO STANDING WATER WILL BE PERMISSABLE.
2. ALL INVERT CHANNELS SHALL BE CONSTRUCTED TO OBTAIN A SMOOTH FLOW WITHOUT OBSTRUCTIONS.
3. SERVICE LATERALS SHALL NOT ENTER MANHOLES UNLESS SPECIFIED ON PLANS AND THEN MUST BE CONNECTED AS MAINS.
4. BRICK AND CONCRETE SHALL BE USED FOR FLOW CHANNEL BUILD UP.
5. SIDE OF FLOW CHANNEL SHALL BE AT LEAST HALF OF PIPE HEIGHT AT ALL POINTS.
6. PROPERLY SHAPED SPILLWAYS SHALL BE CONSTRUCTED BETWEEN PIPES WITH DIFFERENT INVERT ELEVATIONS TO PROVIDE FOR SMOOTH FLOWS.
7. LATERAL PIES SHALL NOT ENTER THE MANHOLE AT ANGLES GREATER THAN 90 DEGREES TO THE FLOW LINE.

MANHOLE FLOW CHANNEL DETAIL

UPDATED JUNE 2016