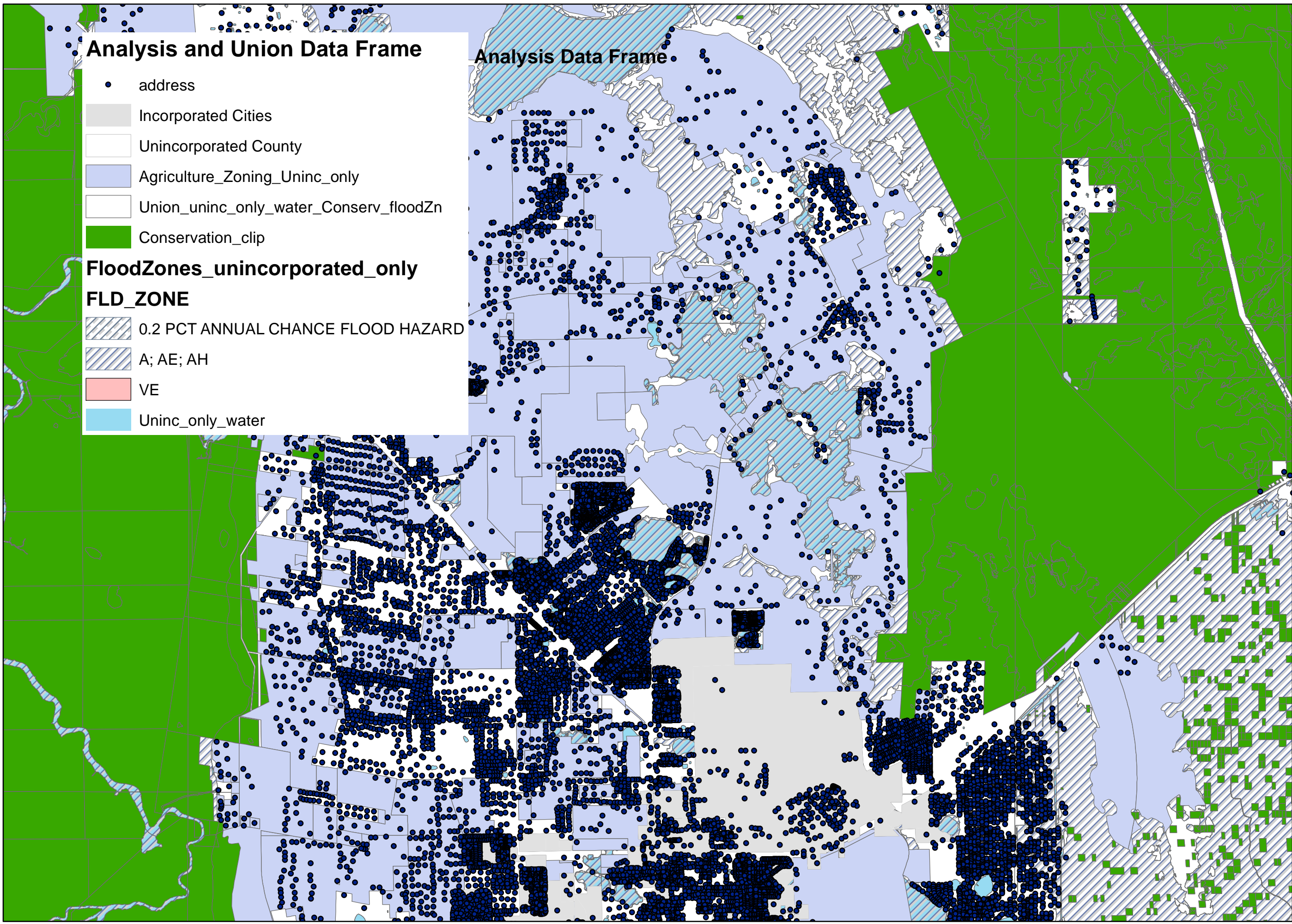
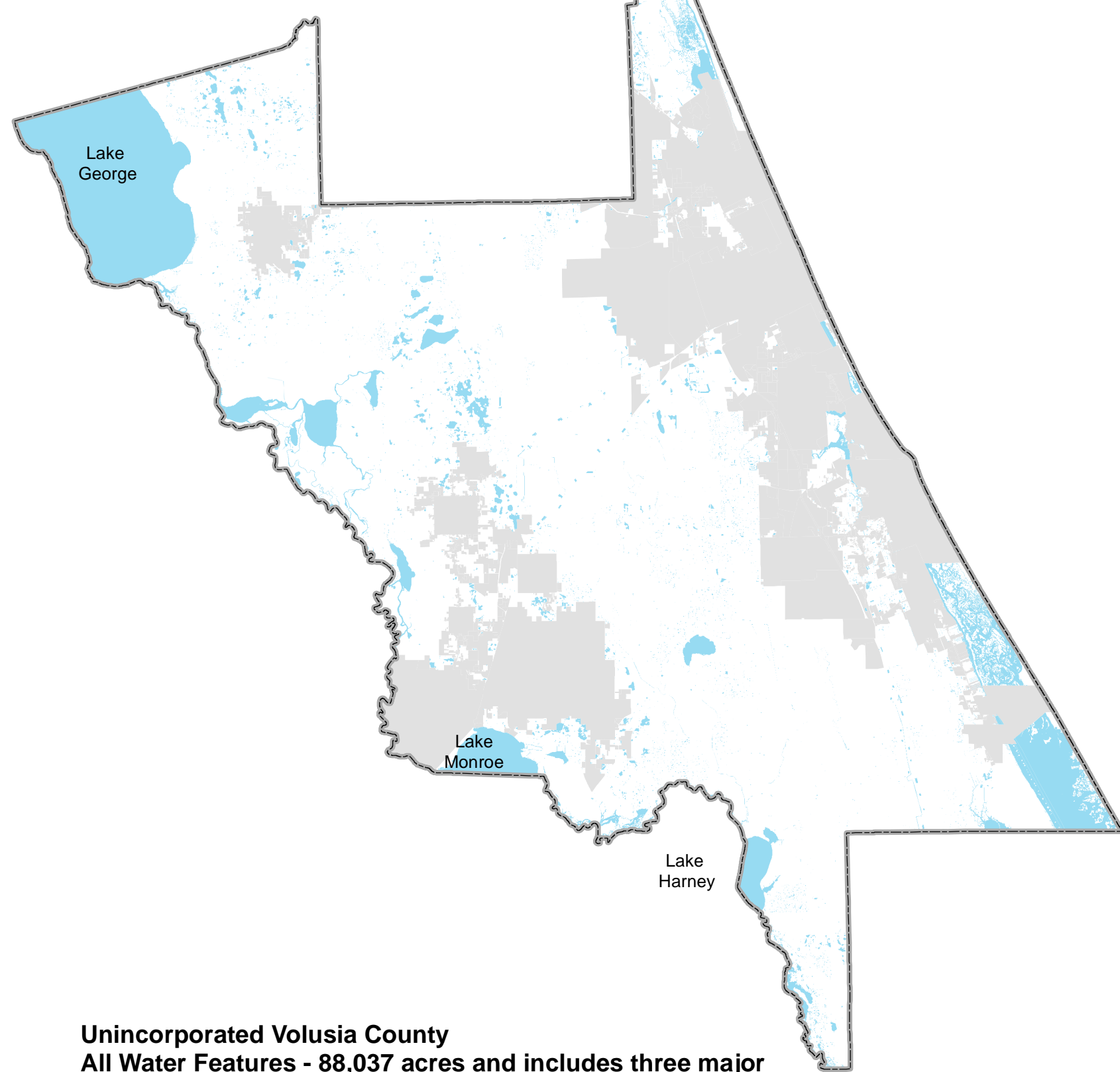
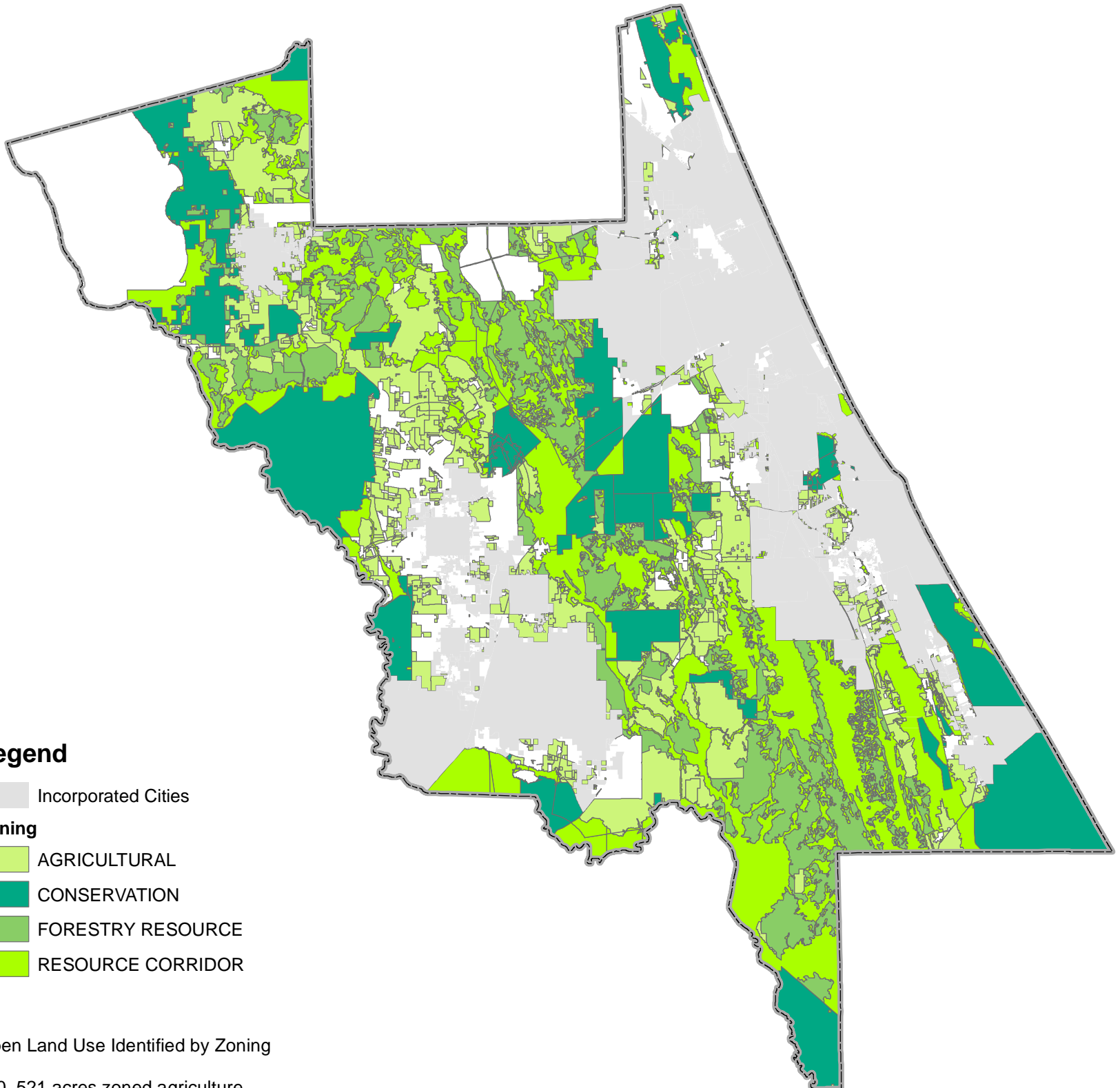
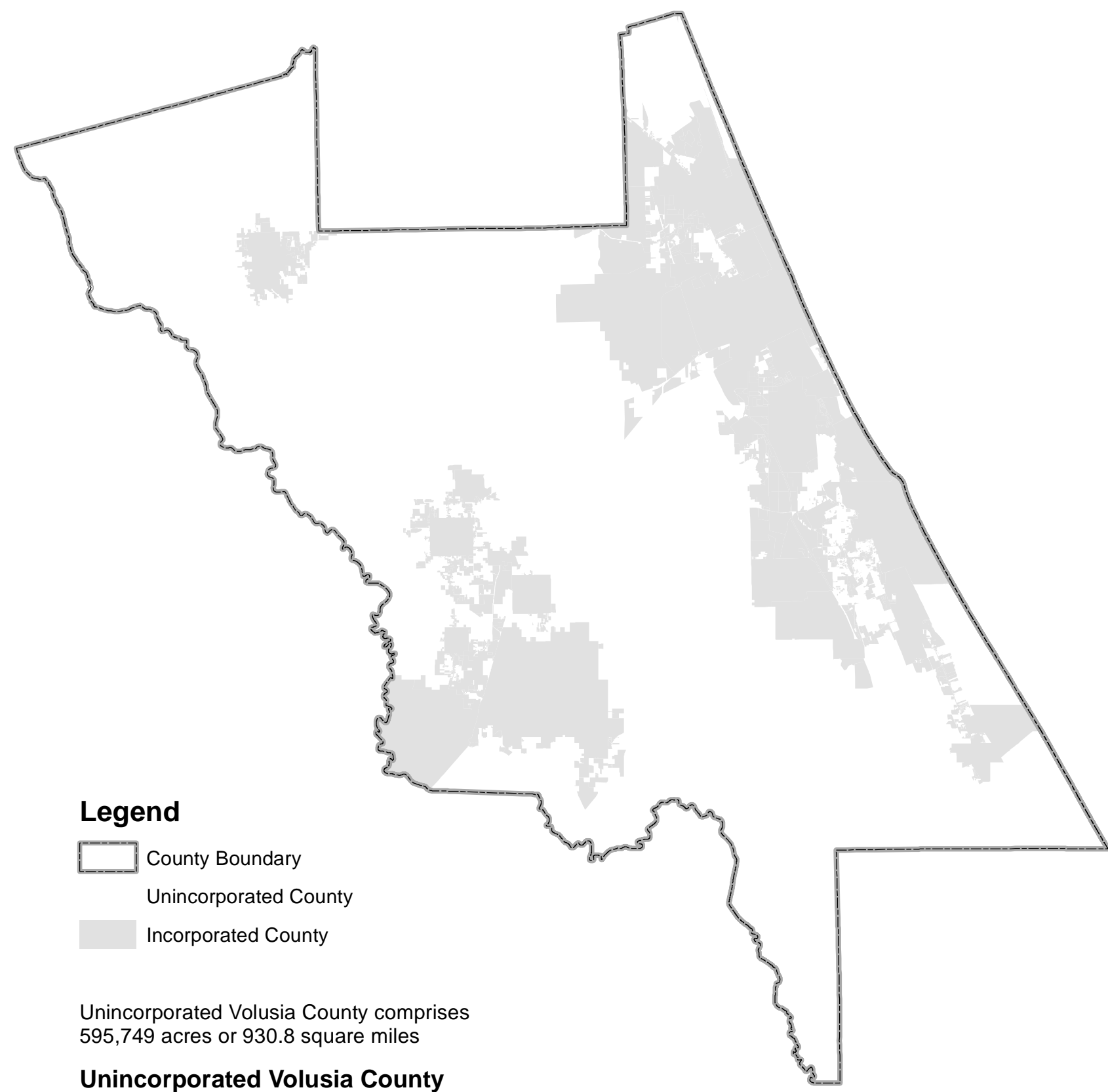
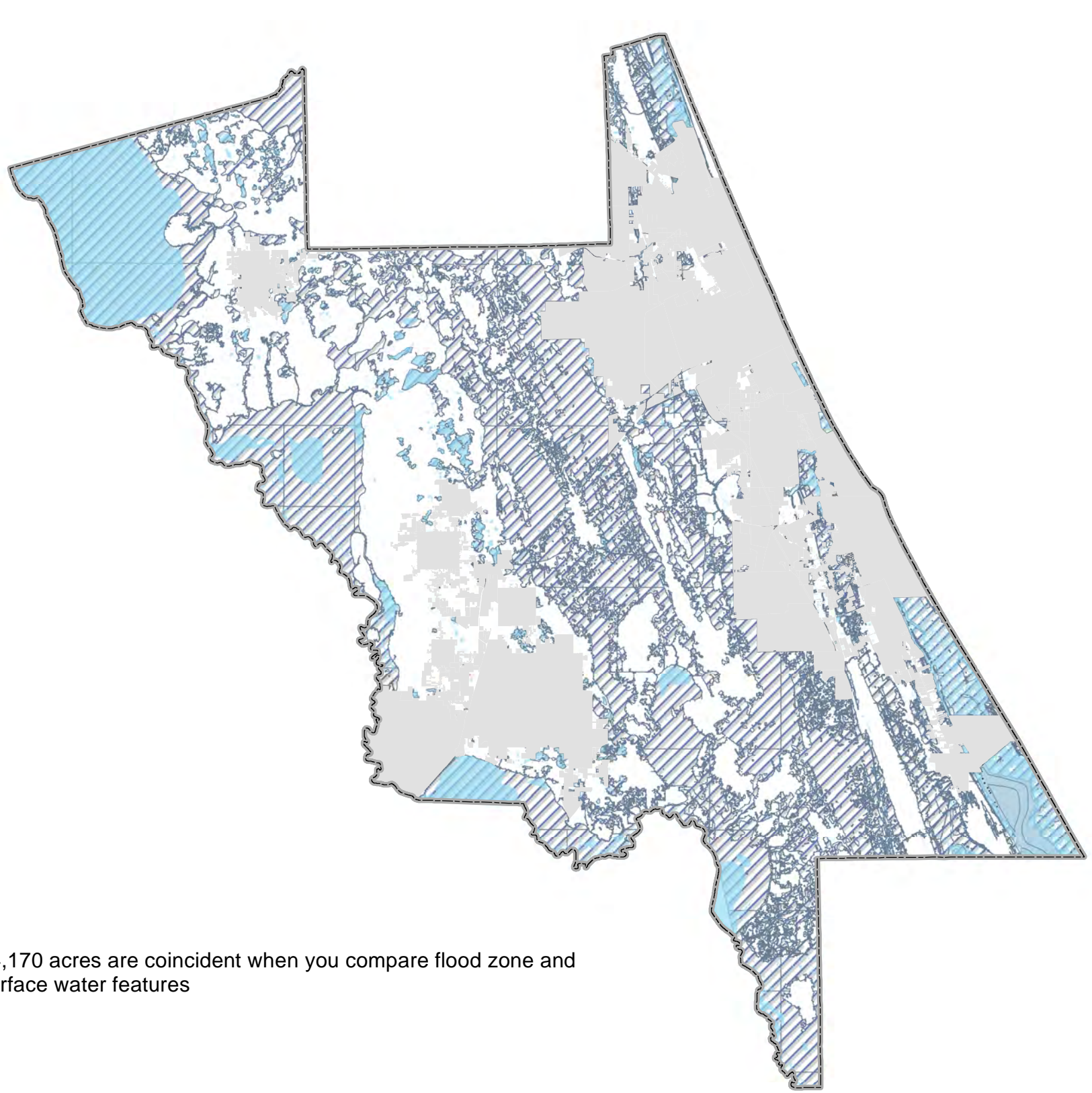
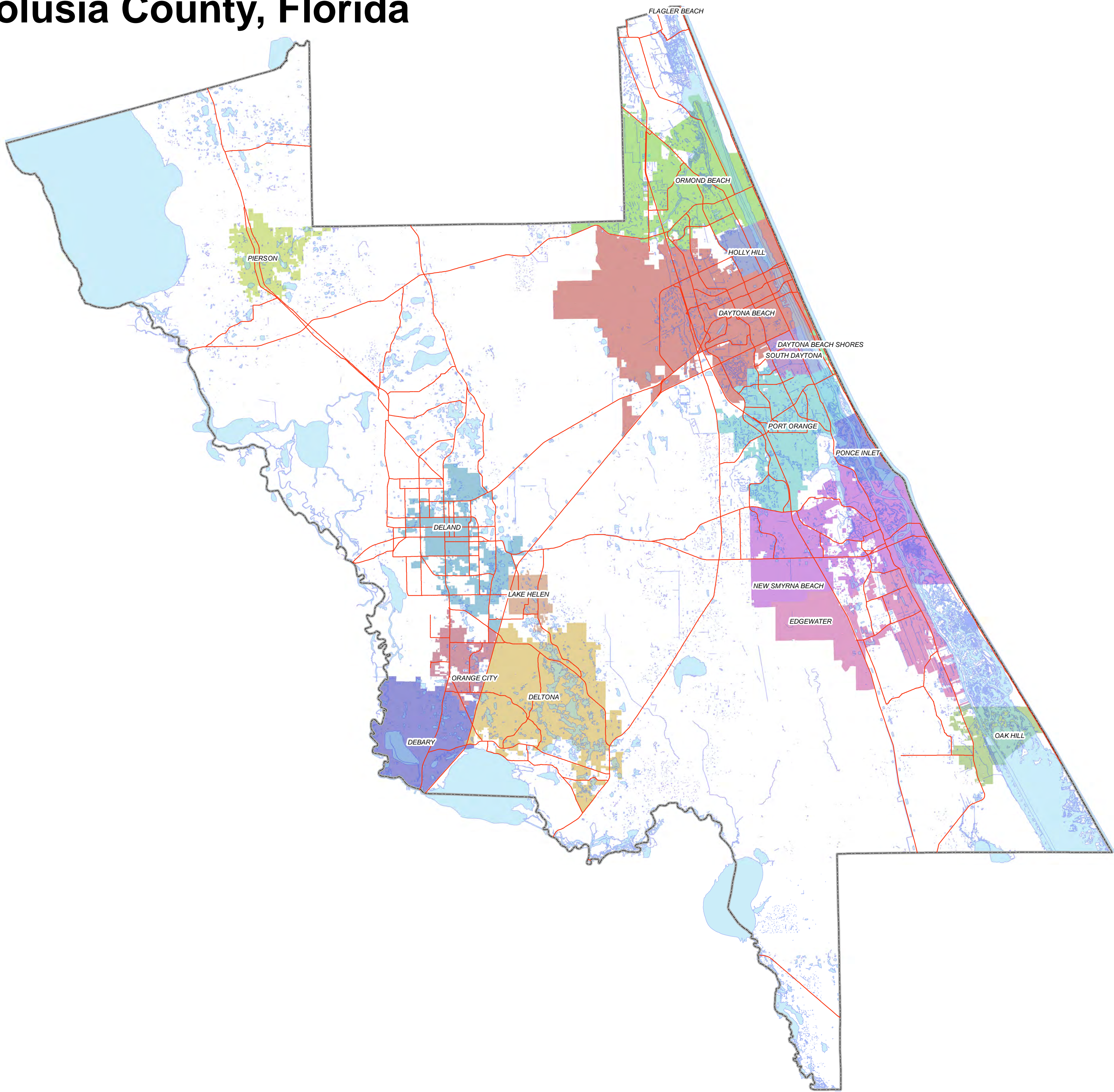


Volusia County, Florida



Comparison - 100 & 500 Year Flood Zone data and Conservation Data

In unincorporated Volusia County, when flood zone data and conservation data are merged there is 169,582 acres that are coincident. When this is compared with Ownership information in the coincident conservation layer, there is 34,455 acres where the ownership is "USA". This leaves 135,227 acres in the unincorporated County in conservation and in the flood zone.

Volusia County Structure Information *
Total Structures Countywide - 241,481
Total Structures Unincorporated County 58,247
Structures in the Unincorporated County in SFHA's 4953

* Note this number is arrived at using Growth Management Situs Address data points marked "mailable" and hence would not include outbuildings, etc. This is the best available data for identifying structures in Volusia County.

