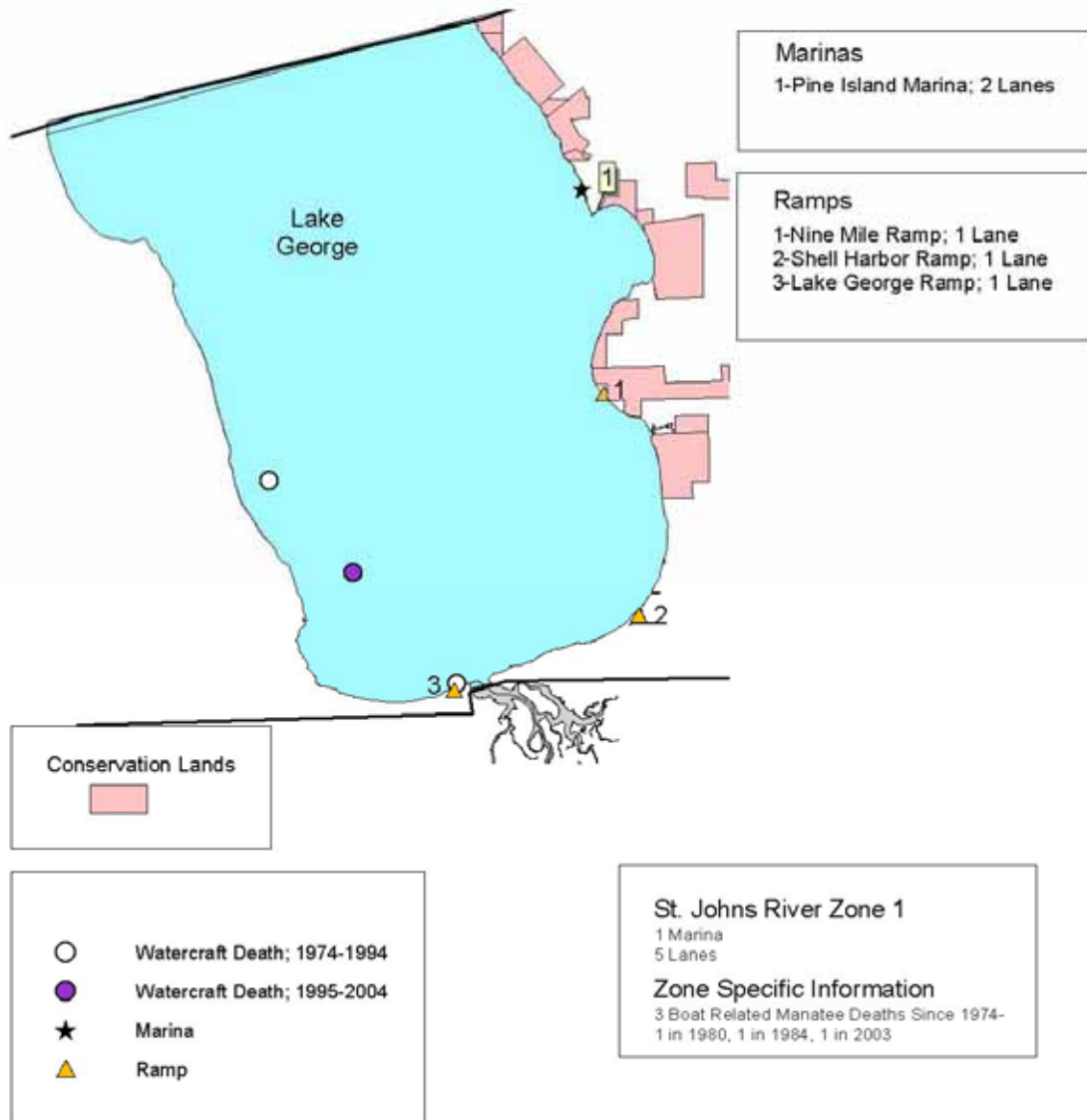


Attachment E: St. Johns River (SJR) Planning Zone Maps

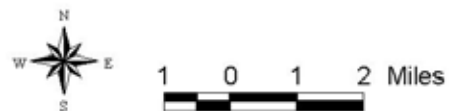
St. Johns River Zone 1



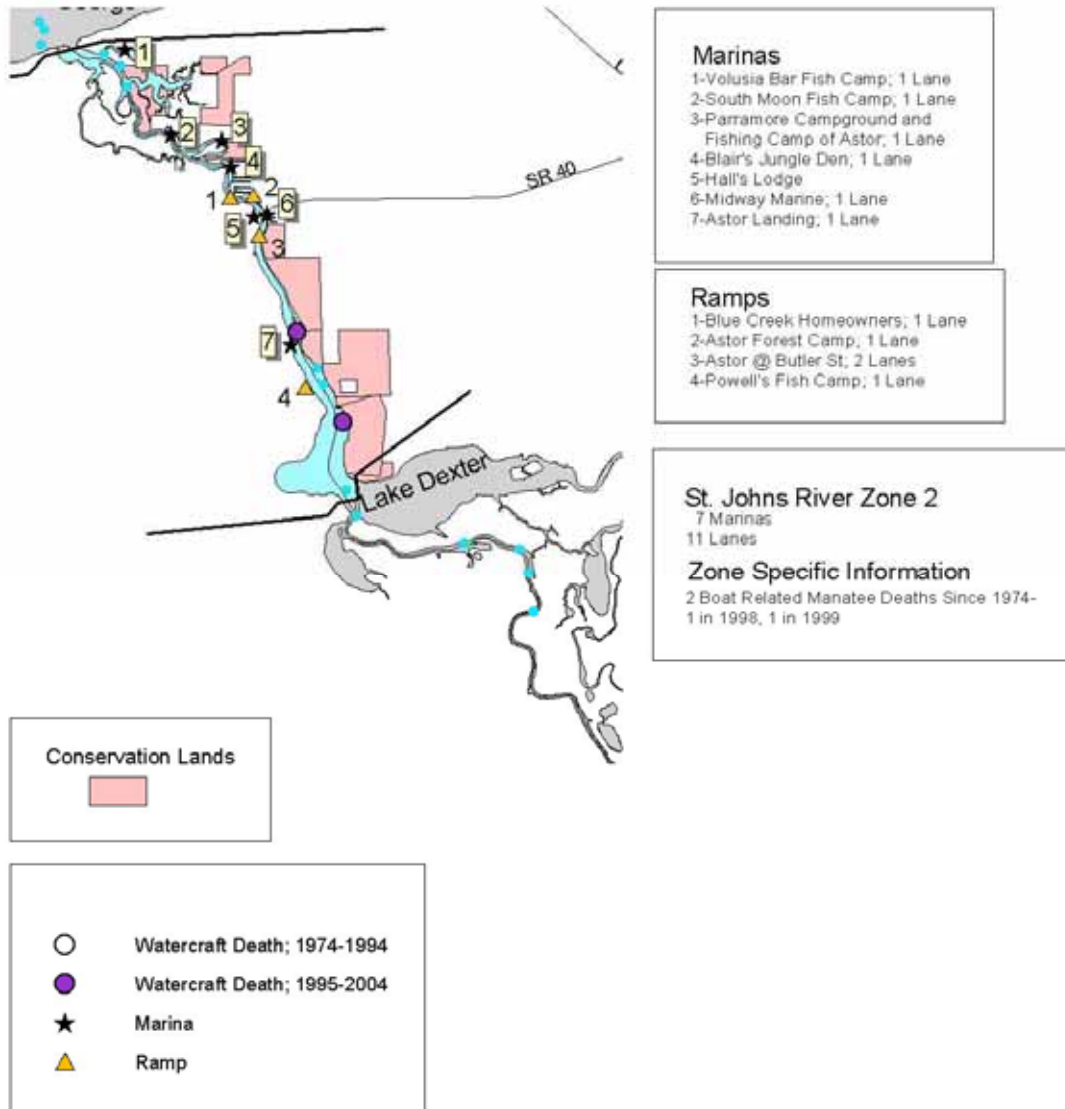
Zone 1: Lake George from the Volusia/Putnam County Line to the Mouth of the St. Johns River (Zinder Point)

Map is for illustrative purposes only.

May 25, 2005



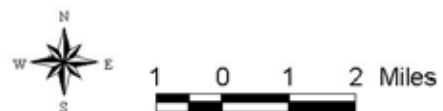
St. Johns River Zone 2



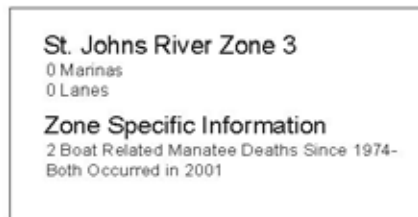
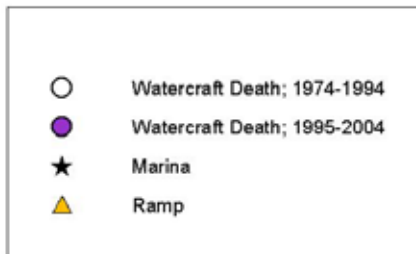
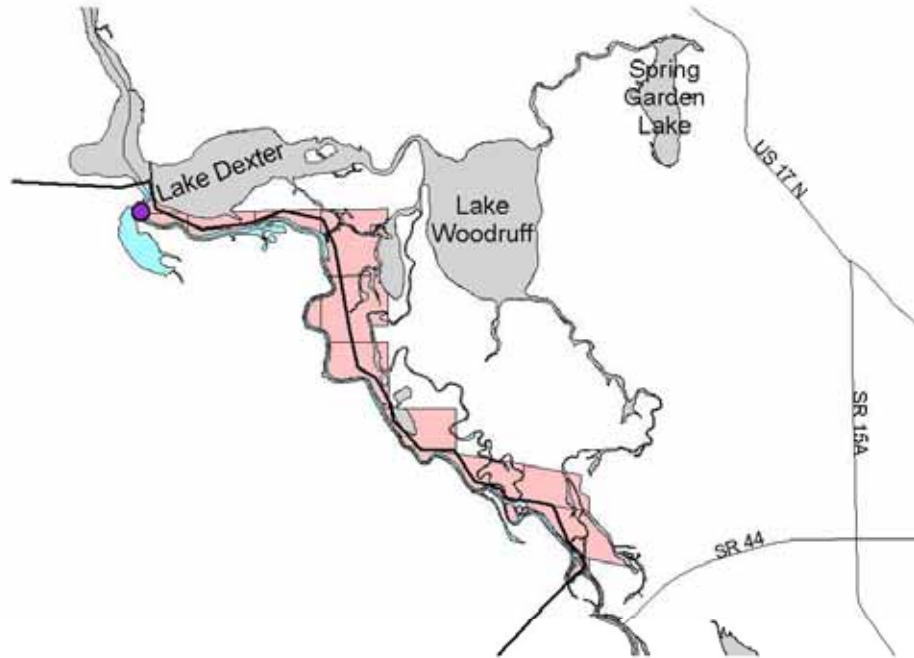
Zone 2: Lake George at the Mouth of the St. Johns River (Zinder Point) to Channel Marker 13 at Lake Dexter

Map is for illustrative purposes only.

May 25, 2005



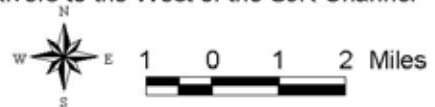
St. Johns River Zone 3



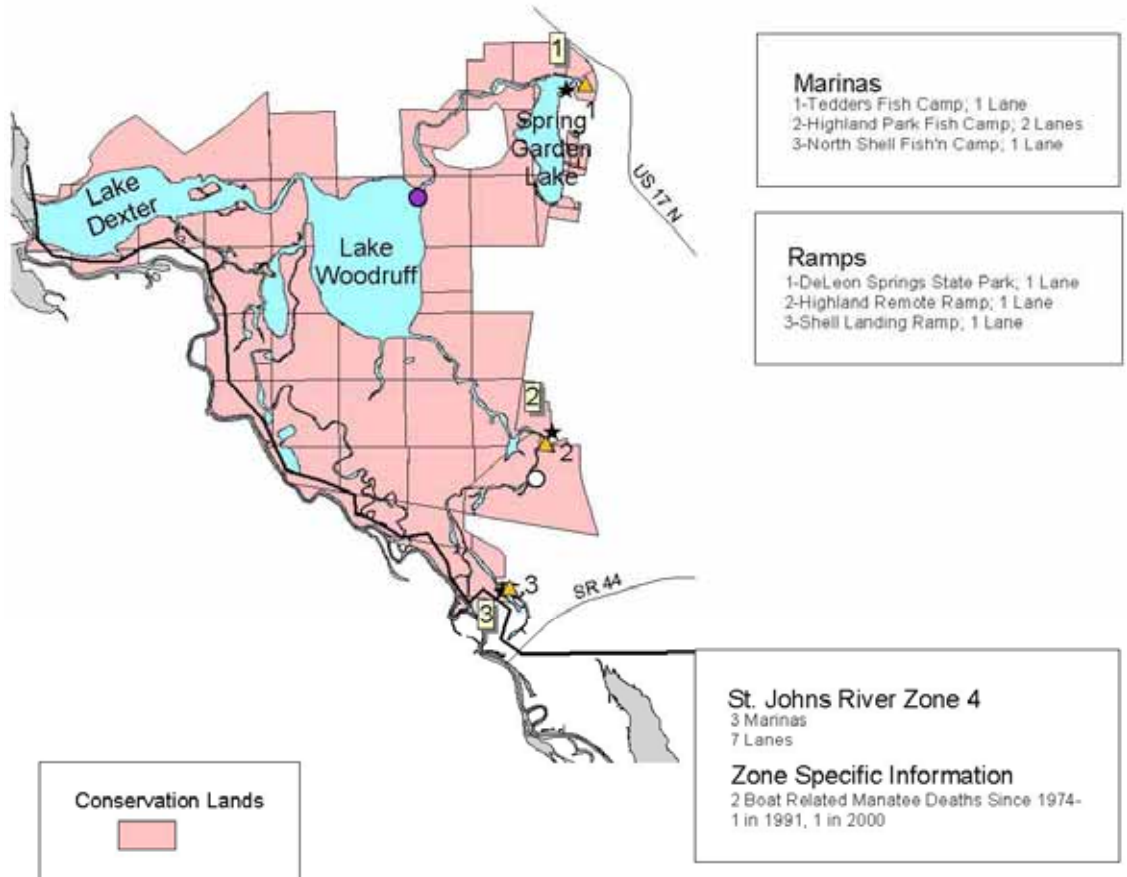
Zone 3: SJR from Channel Marker 13, at Lake Dexter, to the Confluence of the SJR and Highland Park Canal, Including all Lakes, Creeks, and Dead Rivers to the West of the SJR Channel

Map is for illustrative purposes only.

May 25, 2005



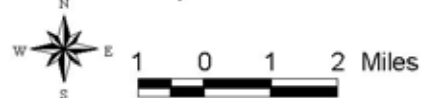
St. Johns River Zone 4



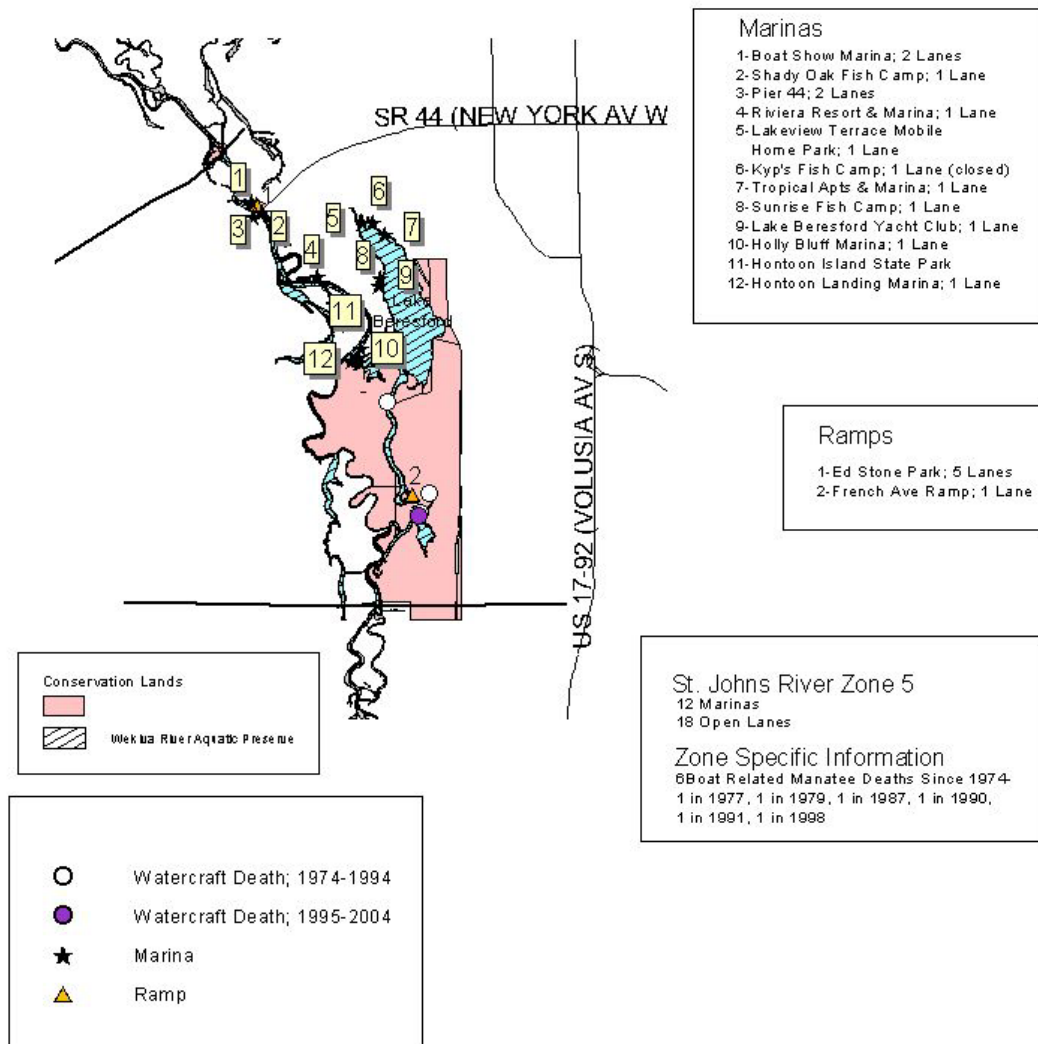
Zone 4: Lake Dexter, Lake Woodruff, Norris Dead River, Ziegler Dead River, All Waters East of these Two Rivers, and all Waterways West to the St. Johns River Proper

Map is for illustrative purposes only.

May 25, 2005

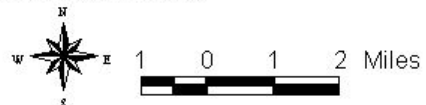


St. Johns River Zone 5

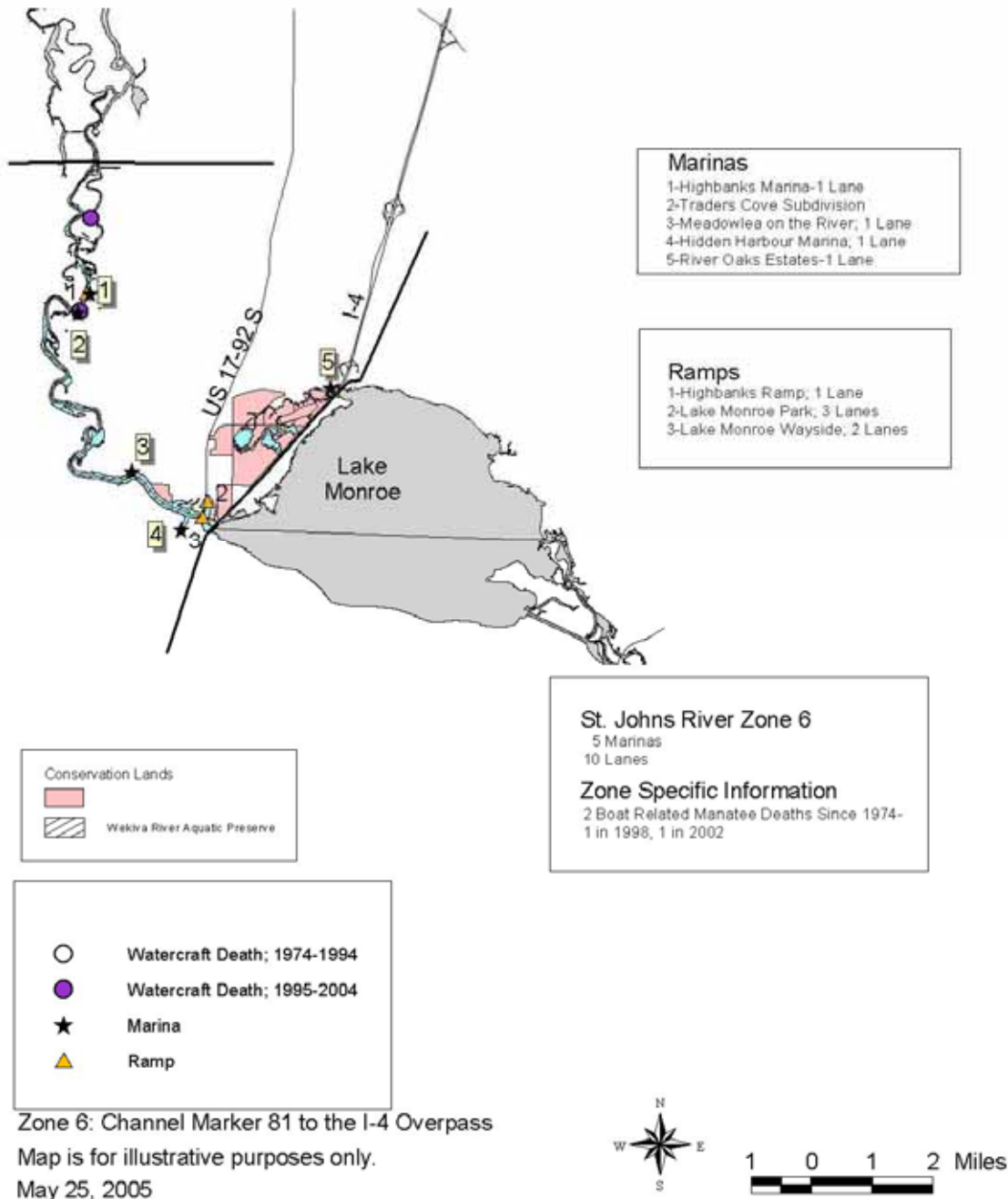


Zone 5: The Confluence of the St. Johns River and Highland Park Canal to Channel Marker 81, Including all of Lake Beresford and the Hontoon Dead River
 Map is for illustrative purposes only.

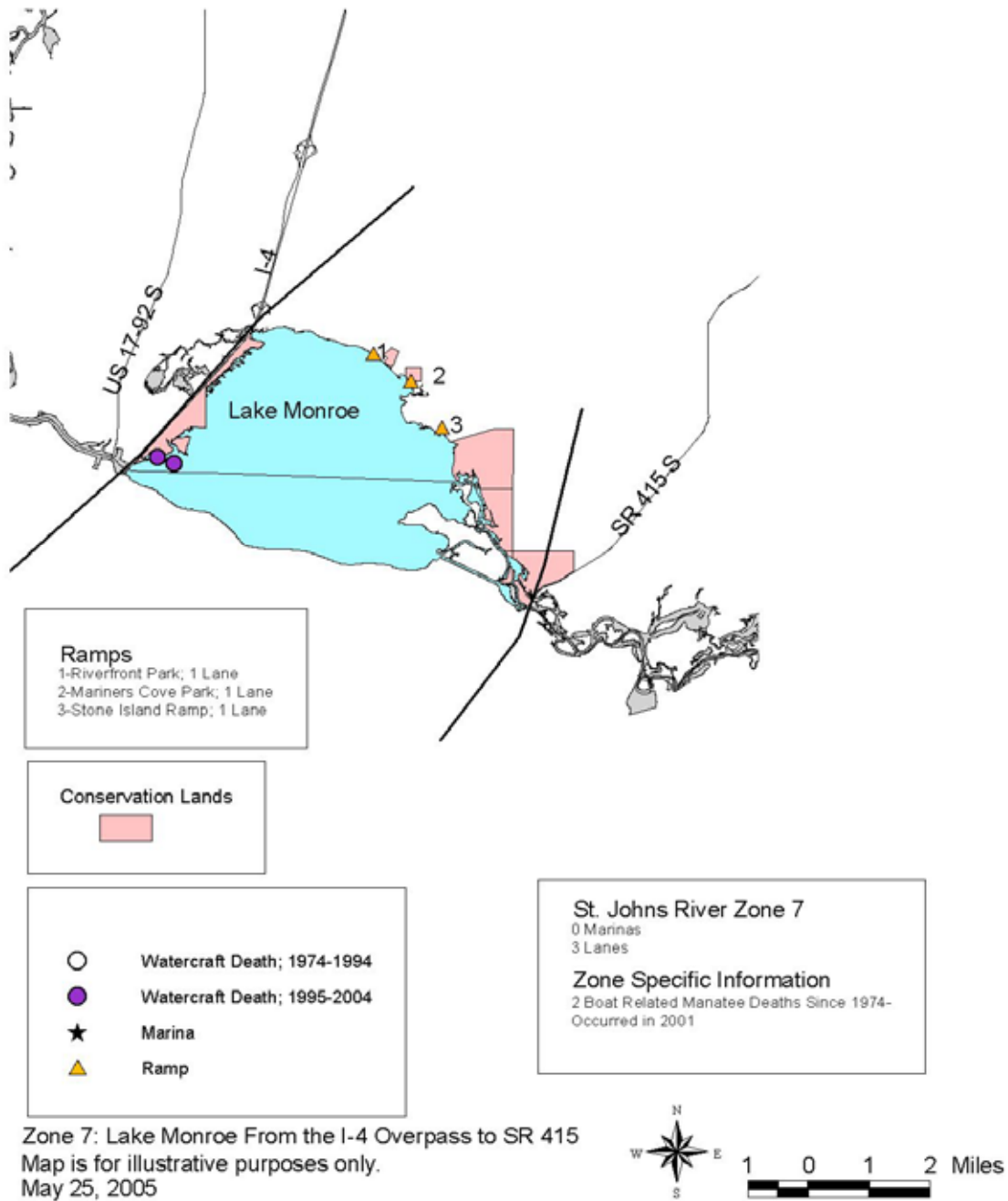
May 25, 2005



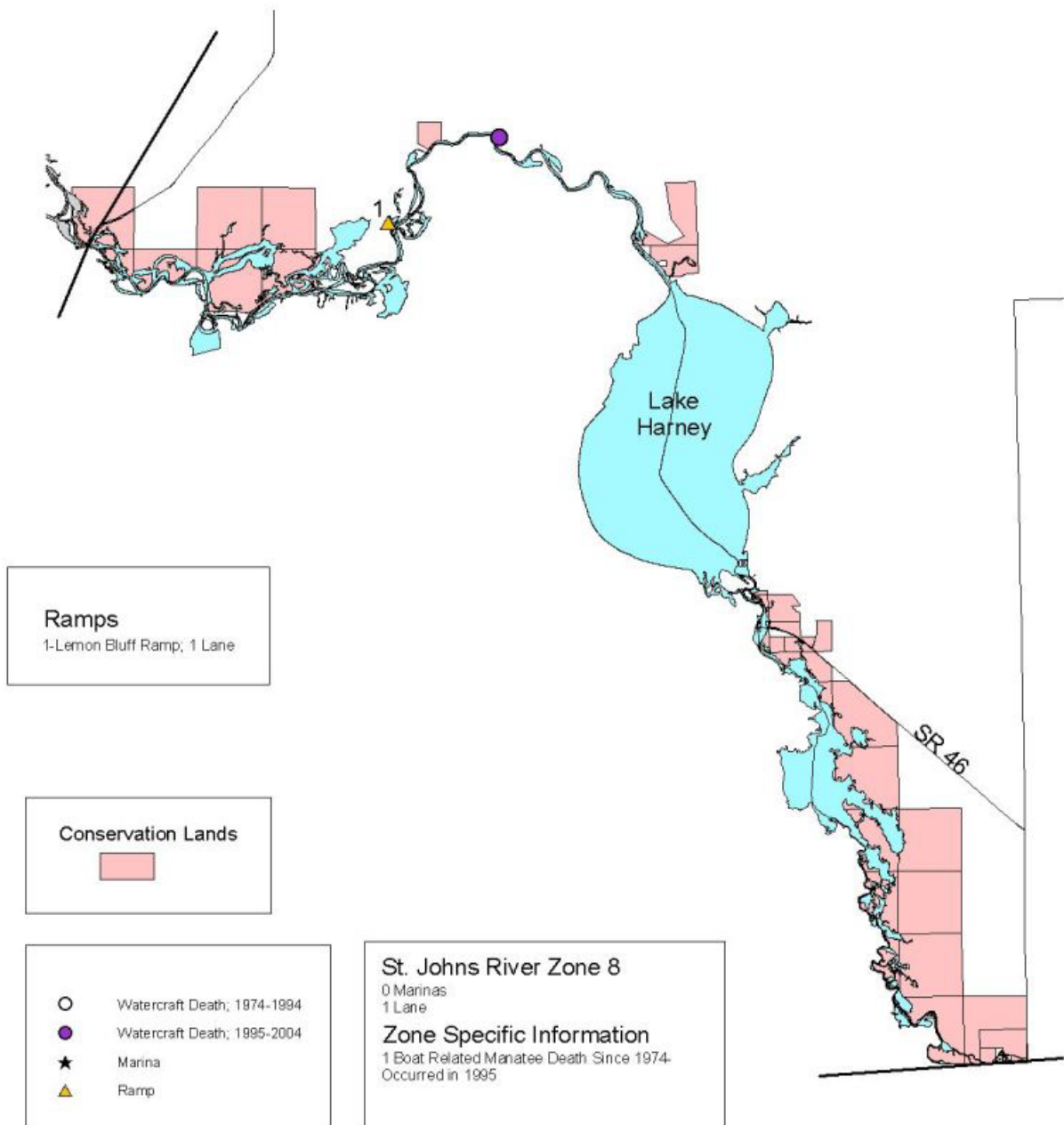
St. Johns River Zone 6



St Johns River Zone 7



St. Johns River Zone 8

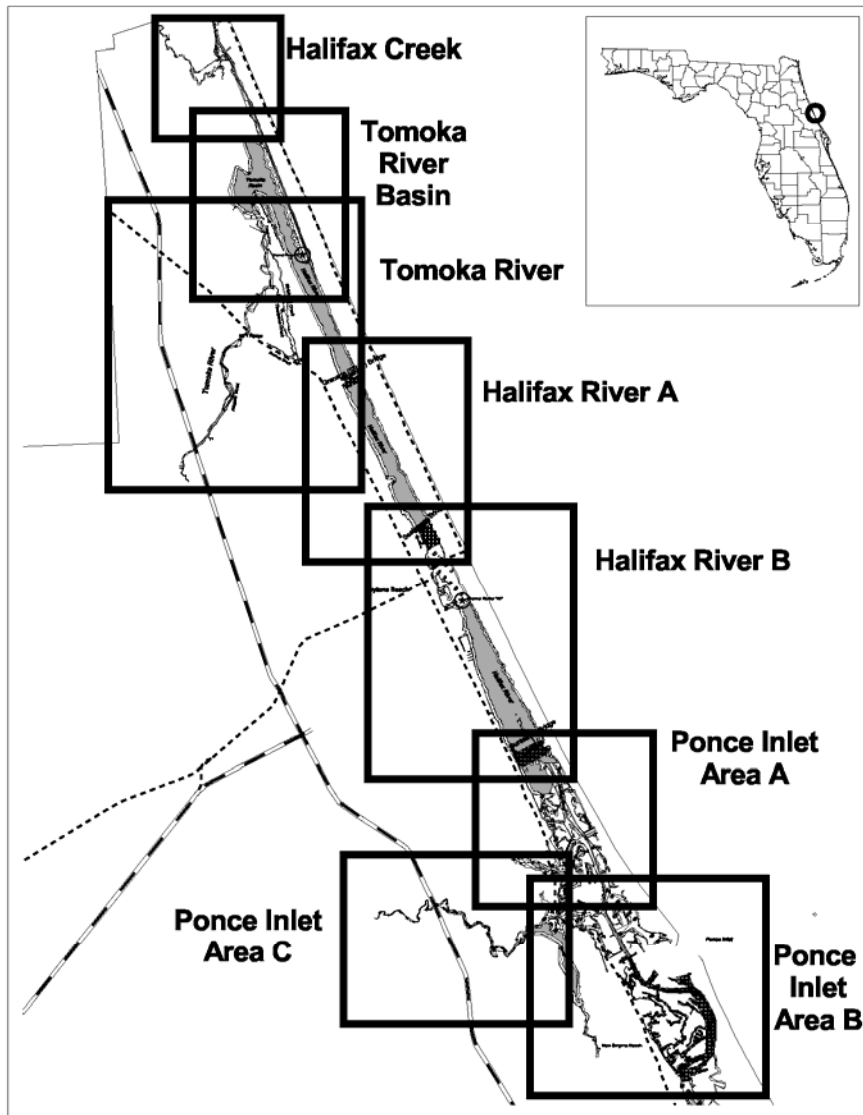


Zone 8: St. Johns River From SR 415 to Lake Harney
Map is for illustrative purposes only.

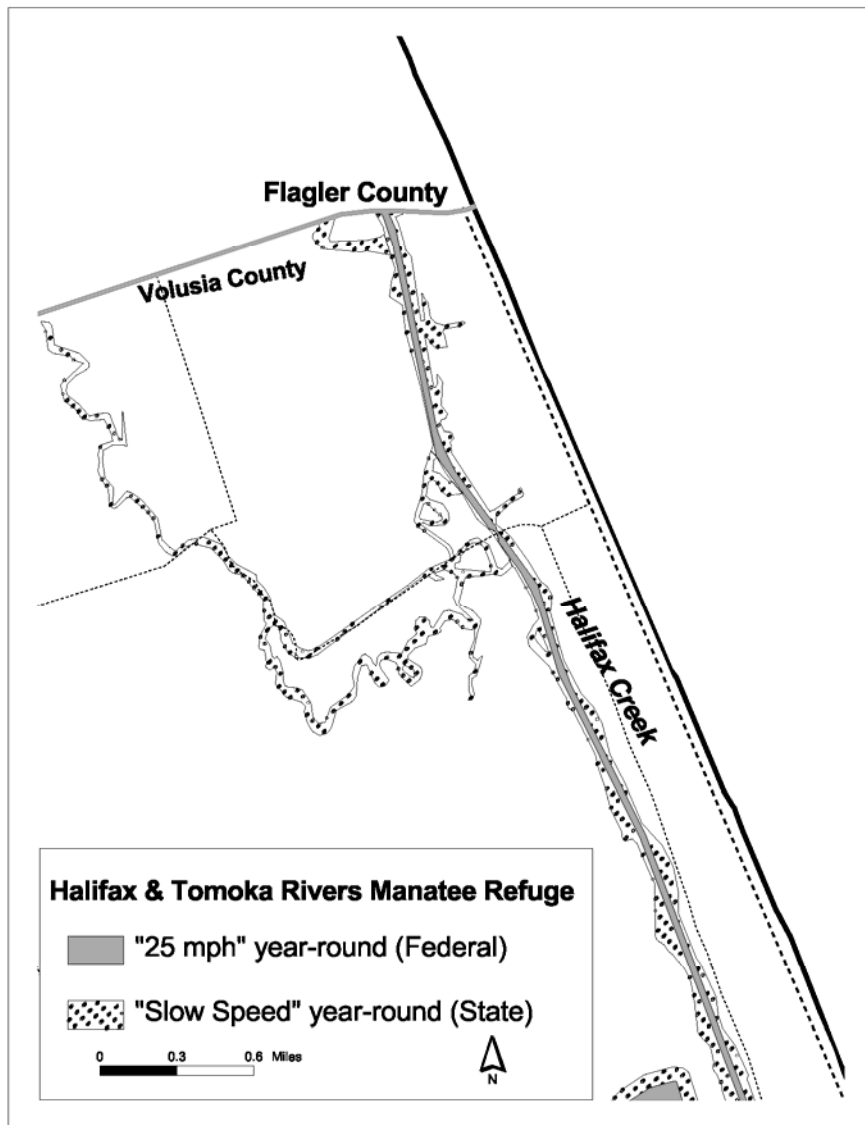
May 25, 2005



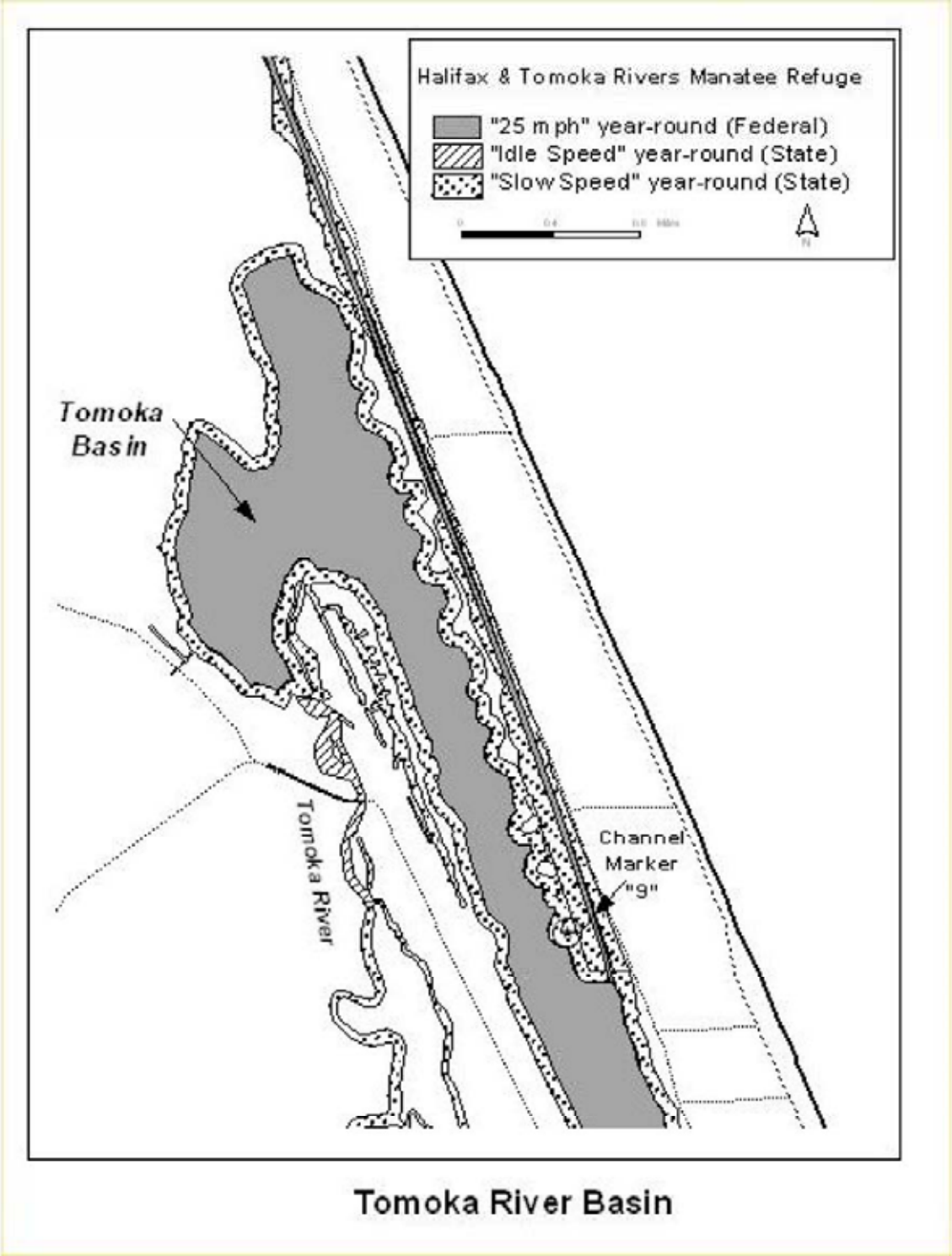
Attachment F: H/IR Speed Zone Maps

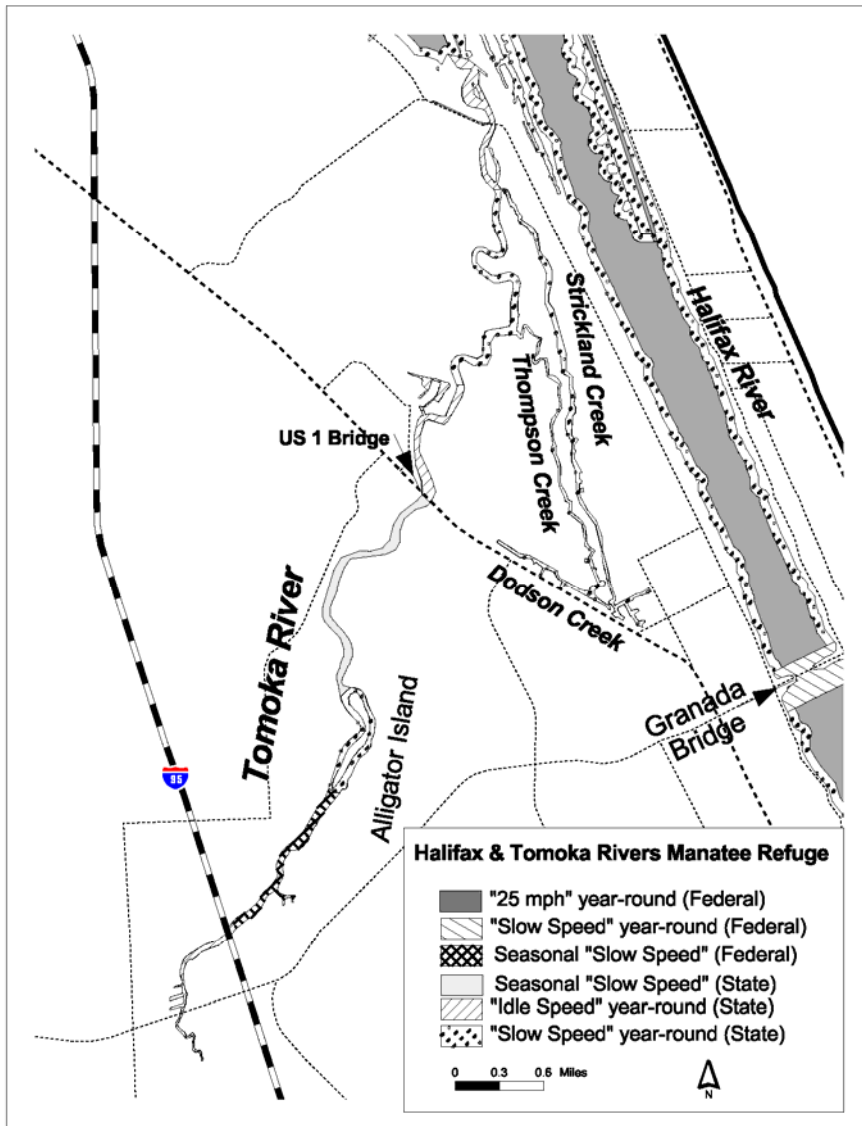


Halifax & Tomoka Rivers Manatee Refuge

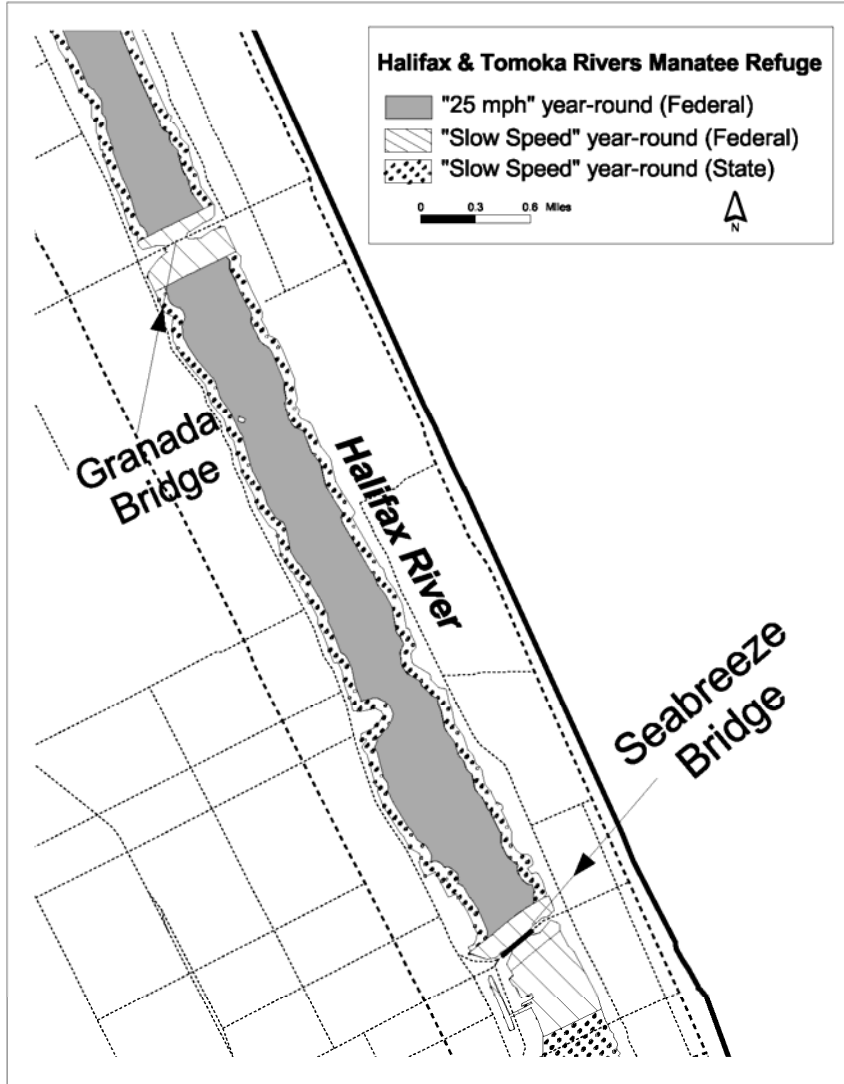


Halifax Creek

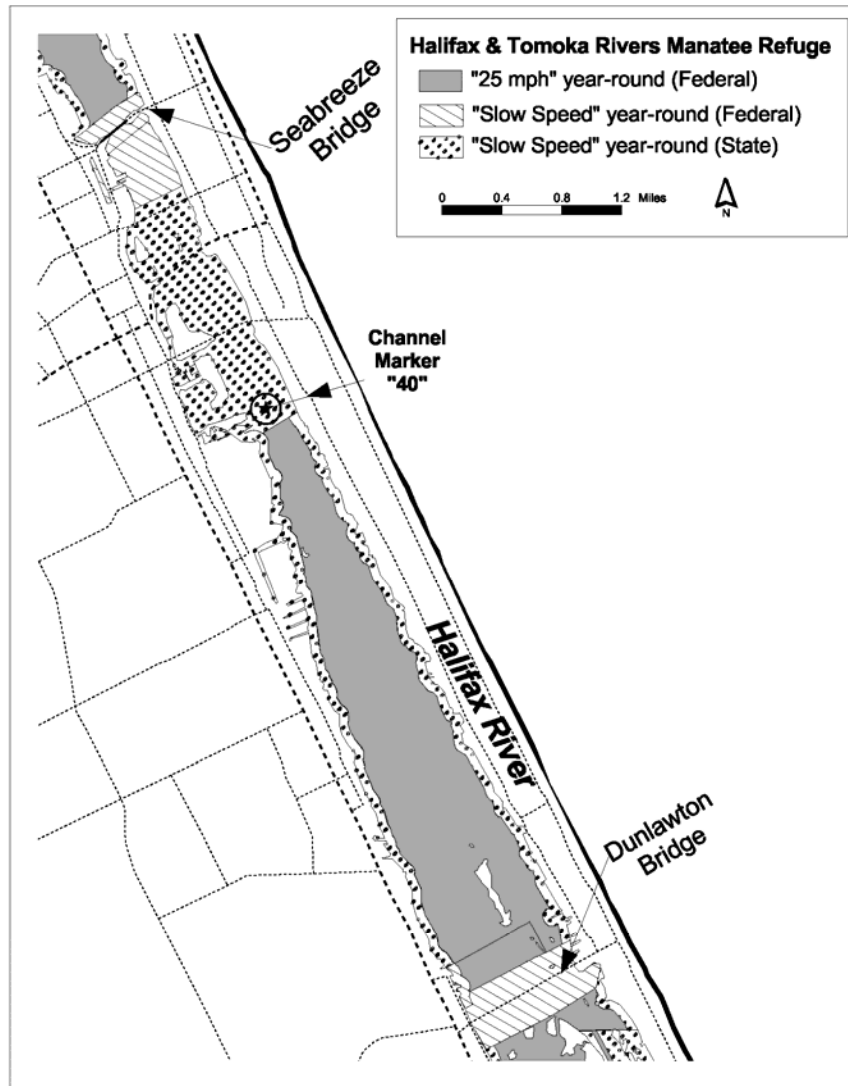




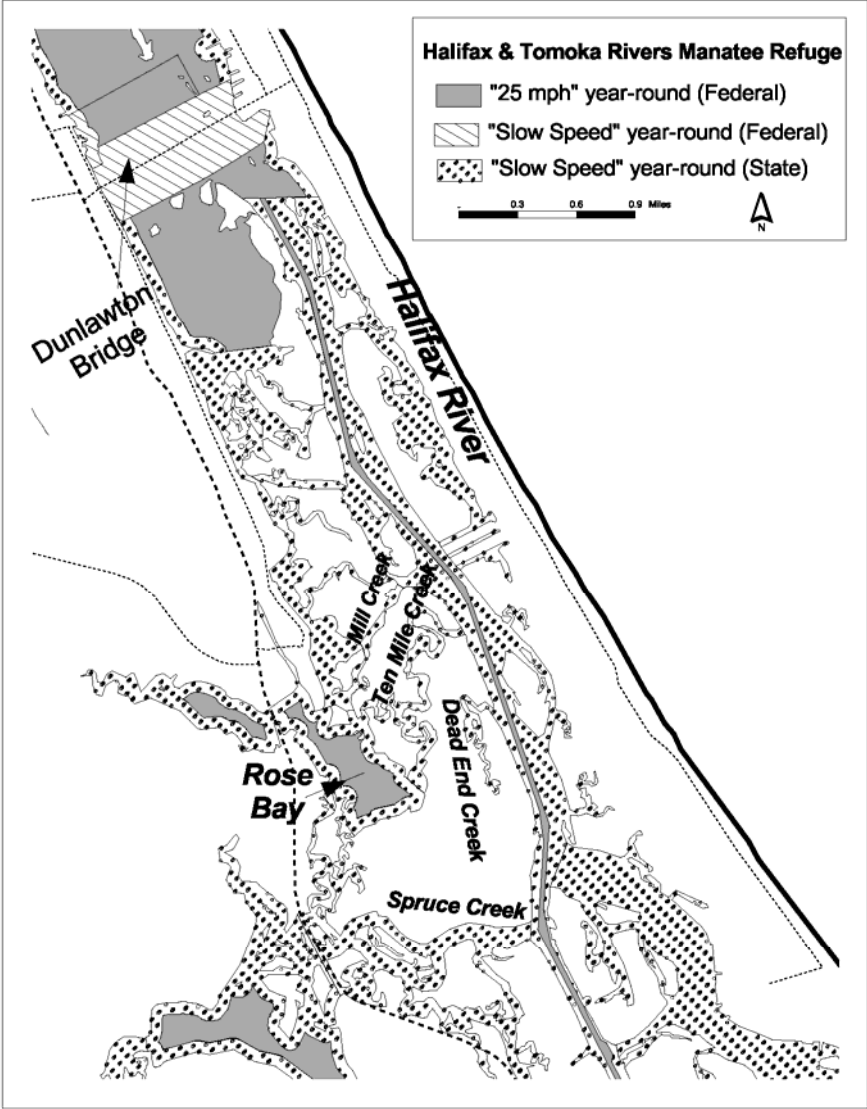
Tomoka River



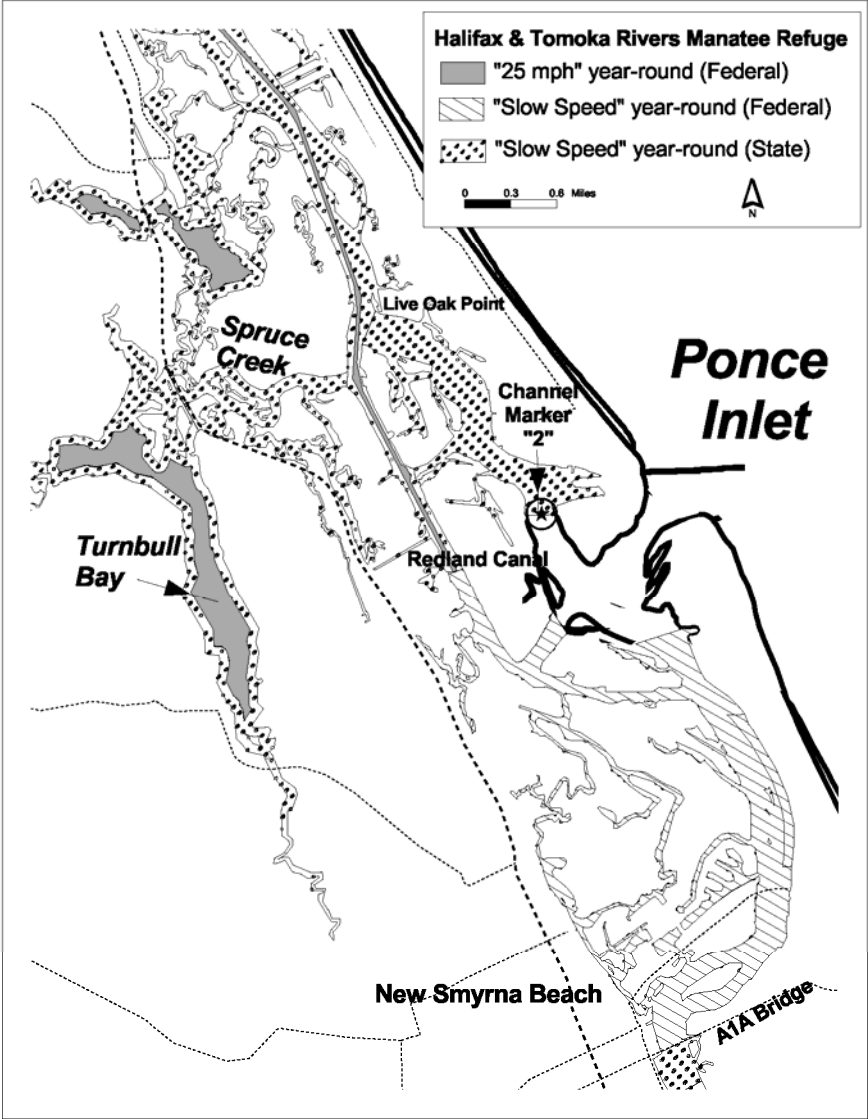
Halifax River A



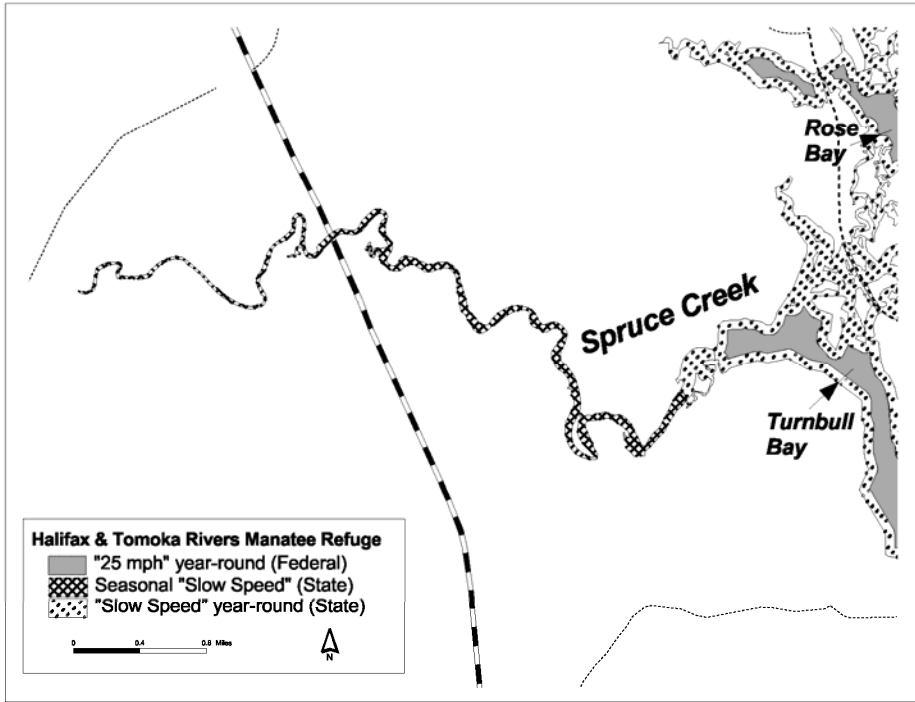
Halifax River B



Ponce Inlet Area A



Ponce Inlet Area B



Ponce Inlet Area C

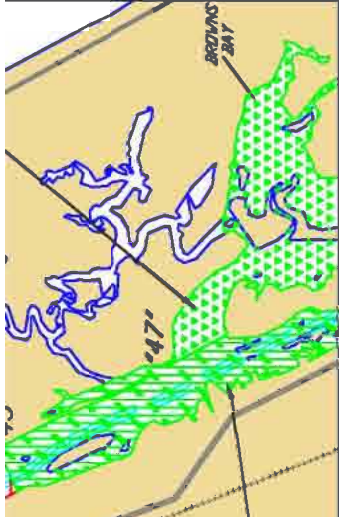


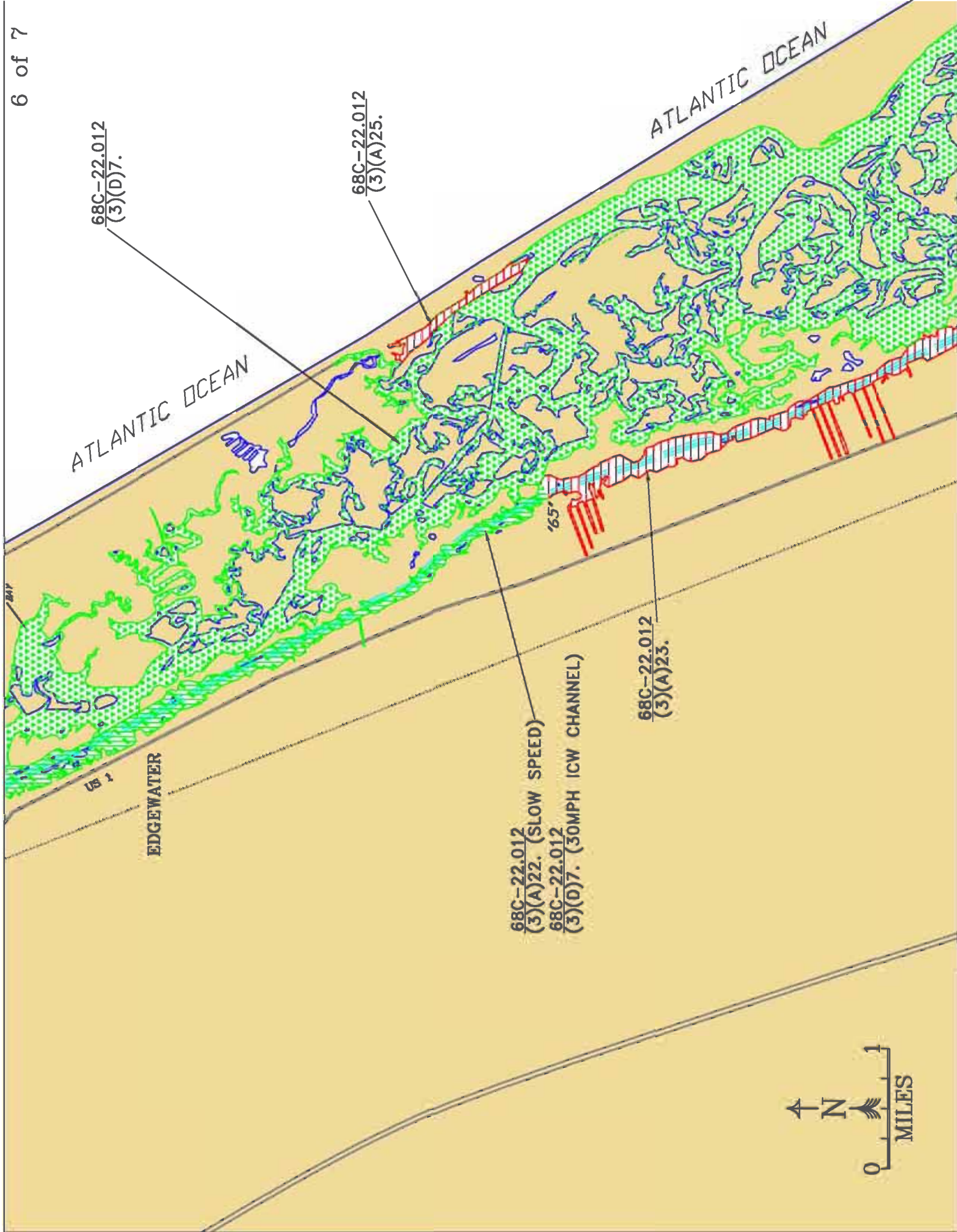
NEW SMYRNA
BEACH

SR 11A

68C-22.012
(3)(A)22. (SLOW SPEED)

68C-22.012
(3)(D)7. (30MPH ICW CHANNEL)





ATLANTIC OCEAN

ATLANTIC OCEAN

US 1

EDGEWATER

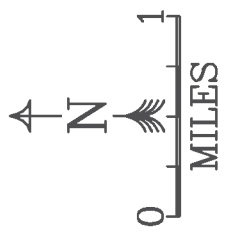
68C-22.012 (3)(A)22. (SLOW SPEED)
68C-22.012 (3)(D)7. (30MPH ICW CHANNEL)

68C-22.012 (3)(A)23.

68C-22.012 (3)(A)25.

68C-22.012 (3)(D)7.

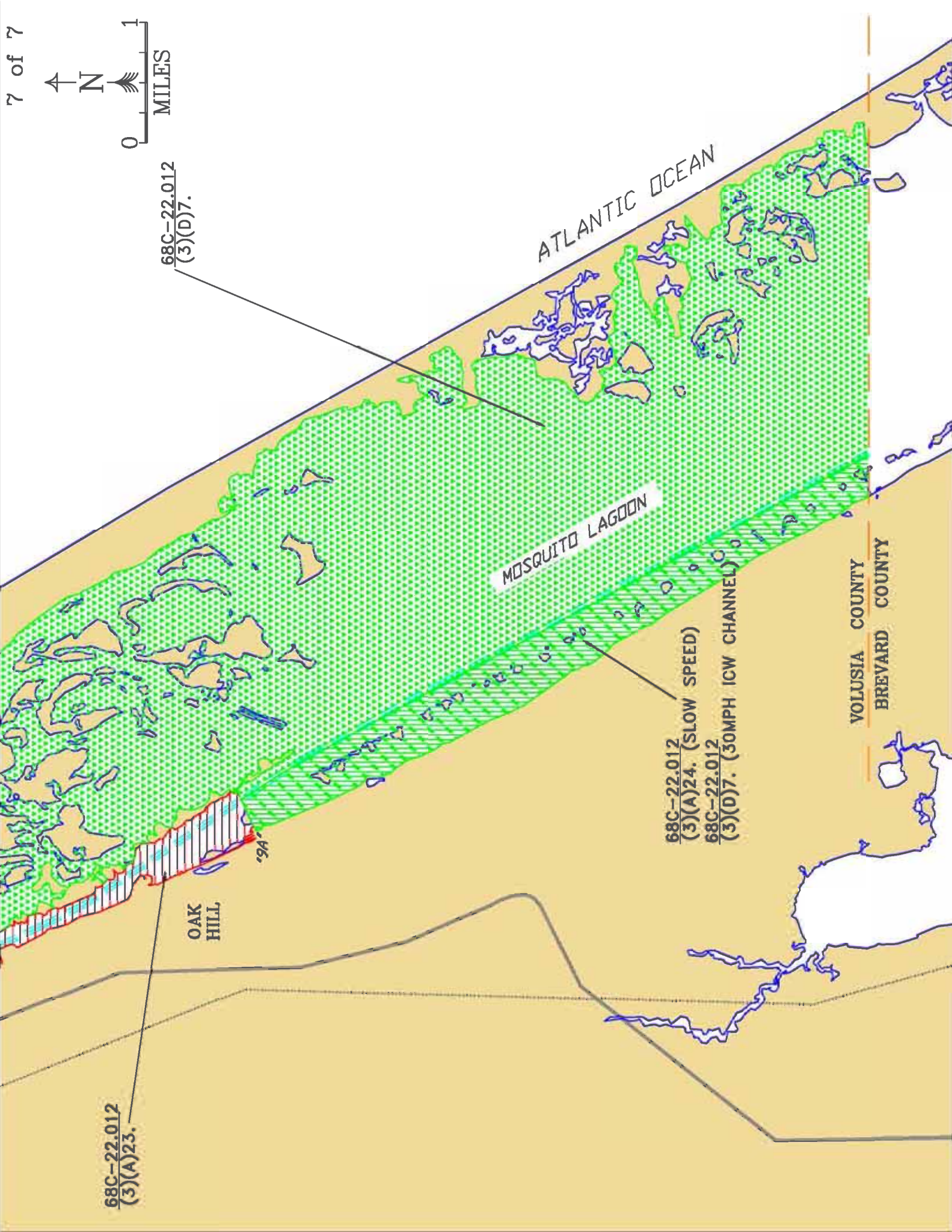




68C-22.012
(3)(A)23.

68C-22.012
(3)(D)7.

68C-22.012
(3)(A)24. (SLOW SPEED)
68C-22.012
(3)(D)7. (30MPH ICW CHANNEL)



OAK HILL

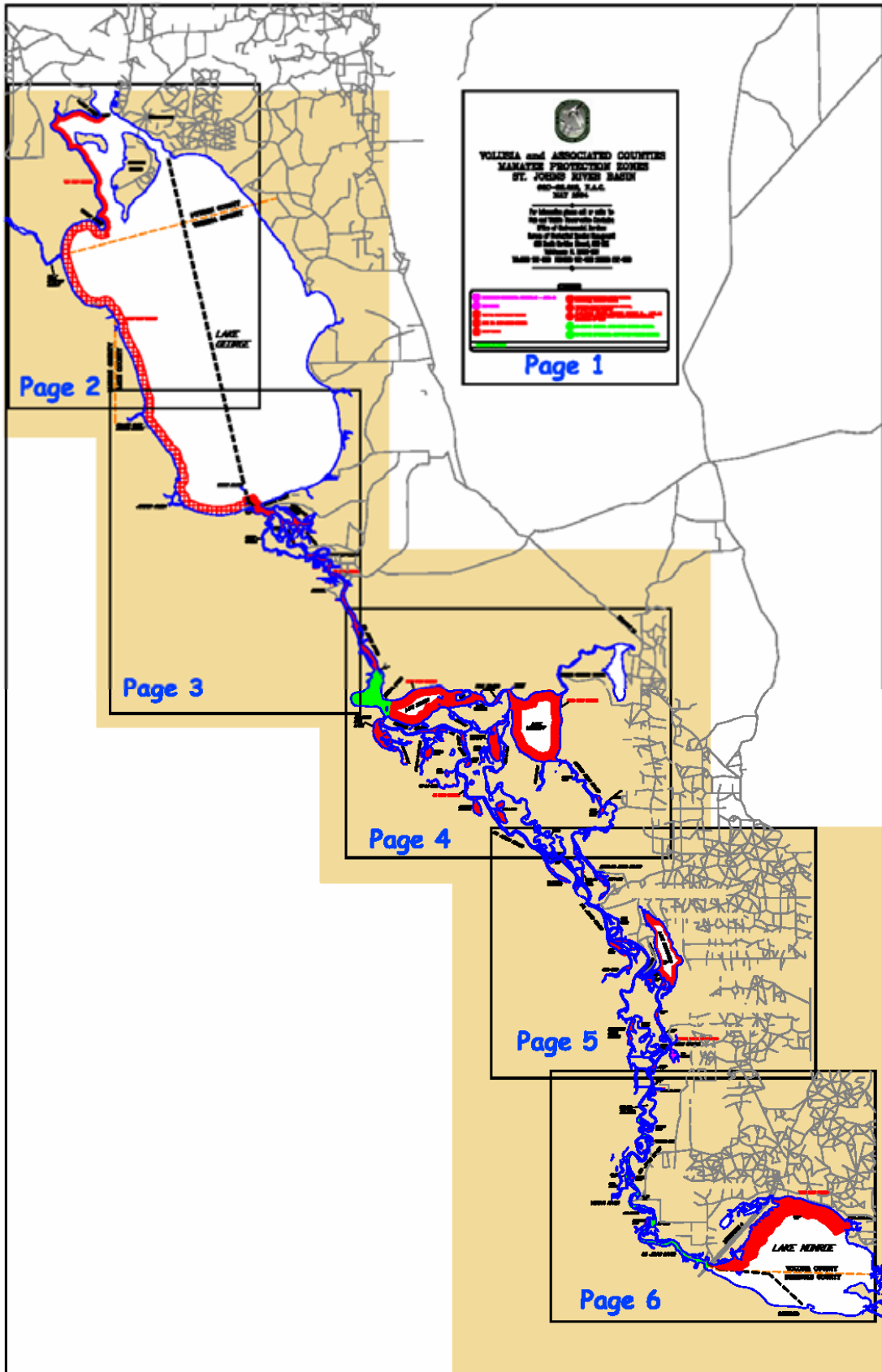
'9A

MOSQUITO LAGOON

ATLANTIC OCEAN

VOLUSIA COUNTY
BREVARD COUNTY

Attachment G: SJR Speed Zone Maps















VOLUSIA and ASSOCIATED COUNTIES MANATEE PROTECTION ZONES ST. JOHNS RIVER BASIN

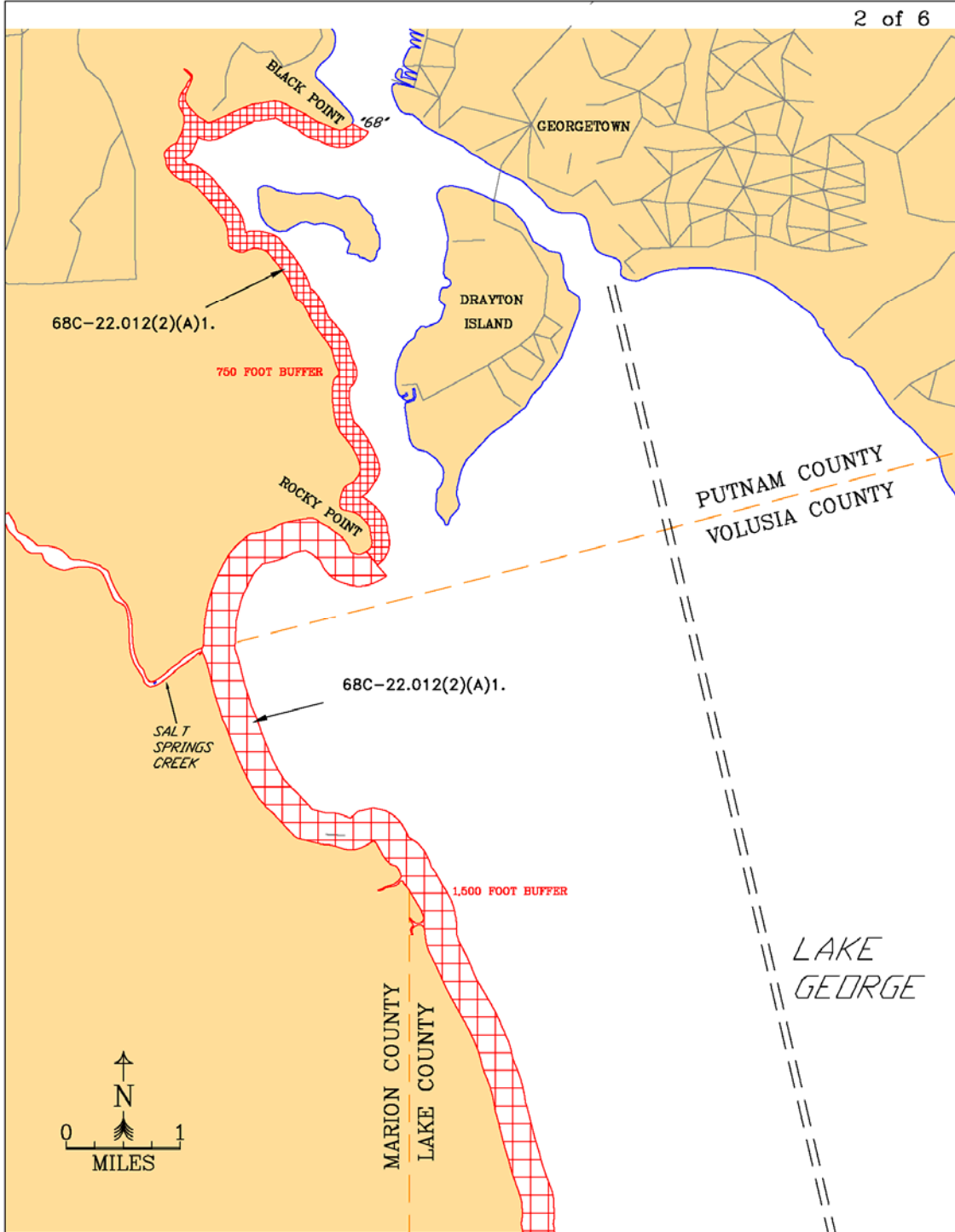
68C-22.012, F.A.C.
MAY 1994

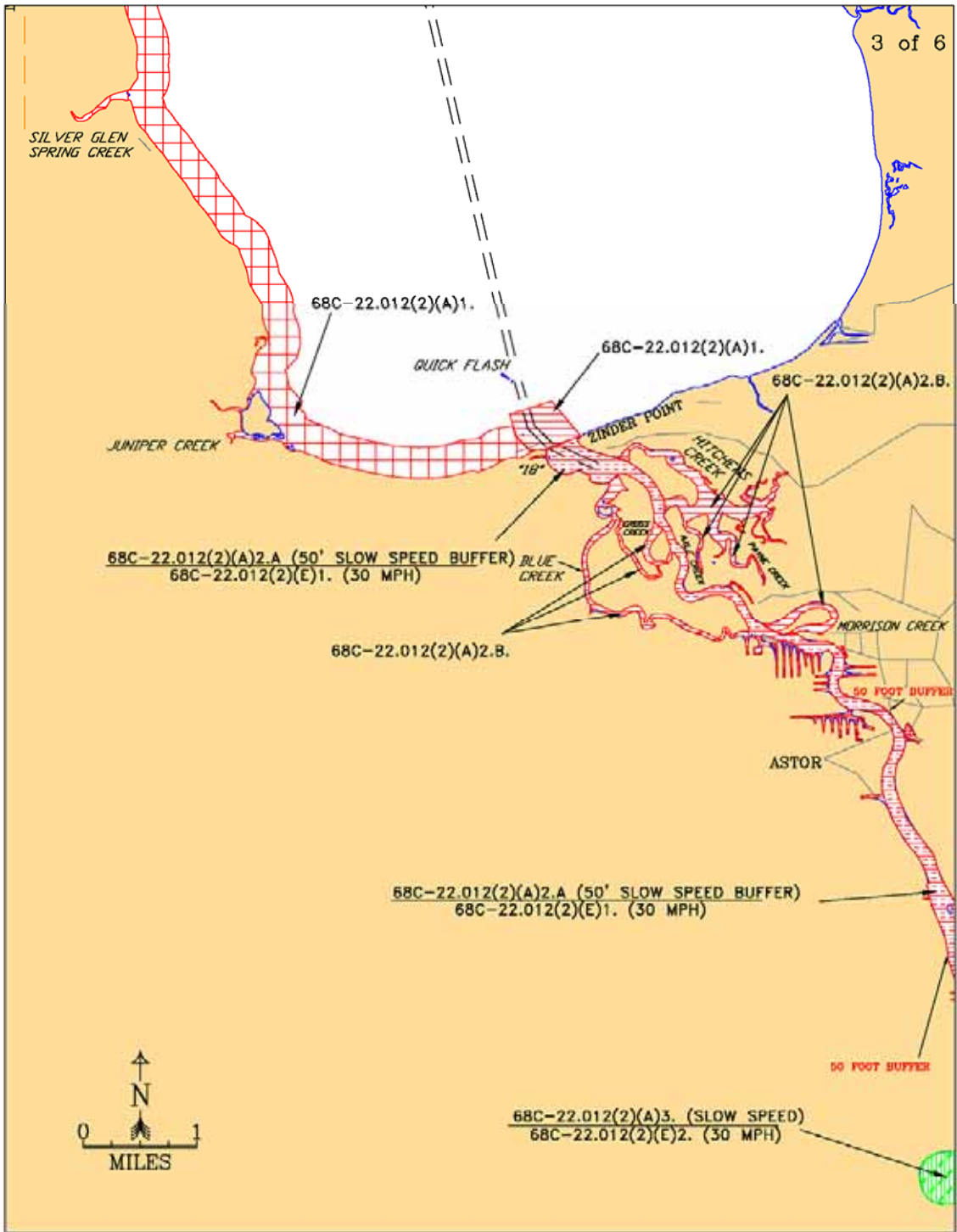
For information please call or write to:
Fish and Wildlife Conservation Commission
Office of Environmental Services
Bureau of Protected Species Management
620 South Meridian Street, OES-BPS
Tallahassee FL 32399-1600
TEL:(850) 922-4330 FAX:(850) 922-4338 SUNCOM: 292-4330

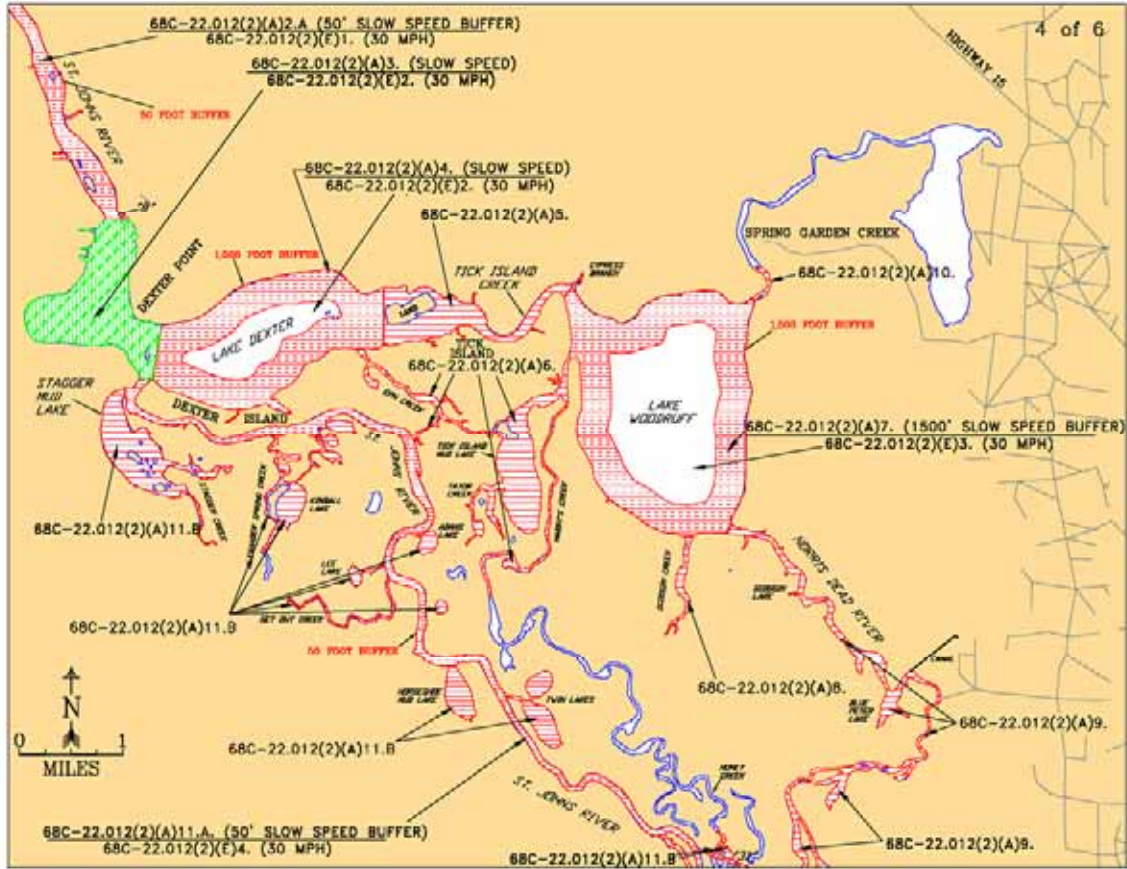
LEGEND

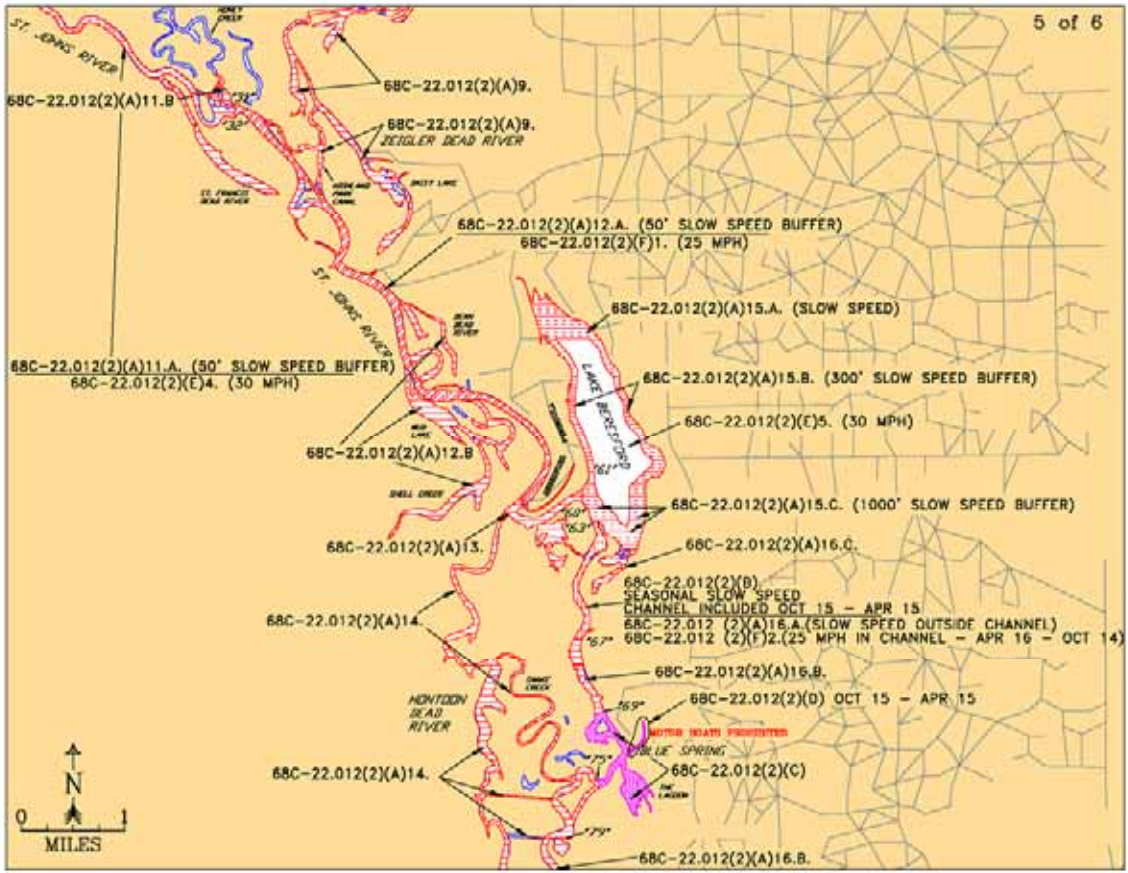
	MOTORBOATS PROHIBITED, OCTOBER 15 - APRIL 15		VARIABLE WIDTH SLOW SPEED BUFFER; 30 MPH (*) OUTSIDE BUFFER
	IDLE SPEED		VARIABLE WIDTH SLOW SPEED BUFFER; 25 MPH OUTSIDE BUFFER
	750 FT. SLOW SPEED BUFFER		SLOW SPEED, CHANNEL INCLUDED, OCTOBER 15 - APRIL 15; 25 MPH IN CHANNEL, SLOW SPEED OUTSIDE CHANNEL, REMAINDER OF YEAR
	1500 FT. SLOW SPEED BUFFER		25 MPH IN CHANNEL; SLOW SPEED OUTSIDE CHANNEL
	SLOW SPEED		30 MPH (*) IN CHANNEL; SLOW SPEED OUTSIDE CHANNEL
<p>• 25 MPH AT NIGHT</p>			

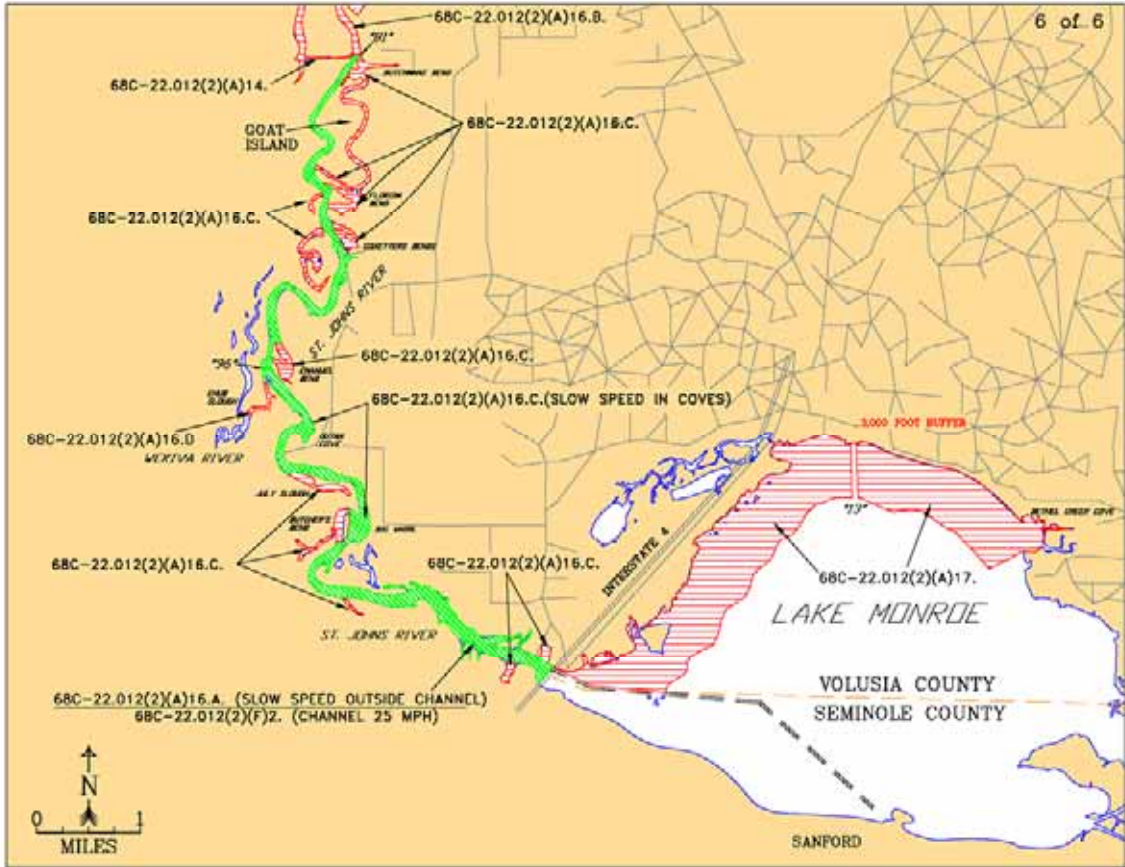
Date Printed: February 11, 2003





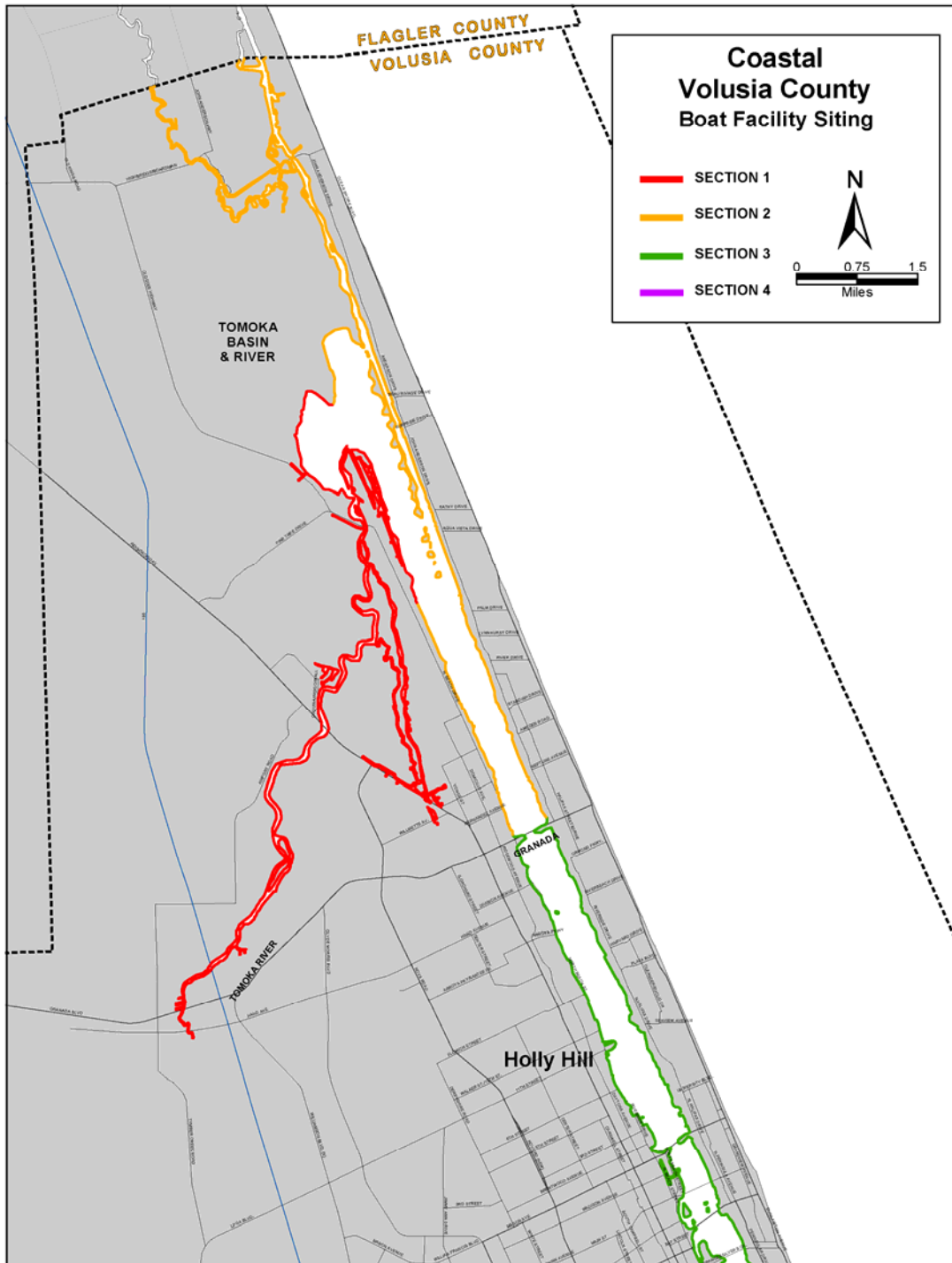




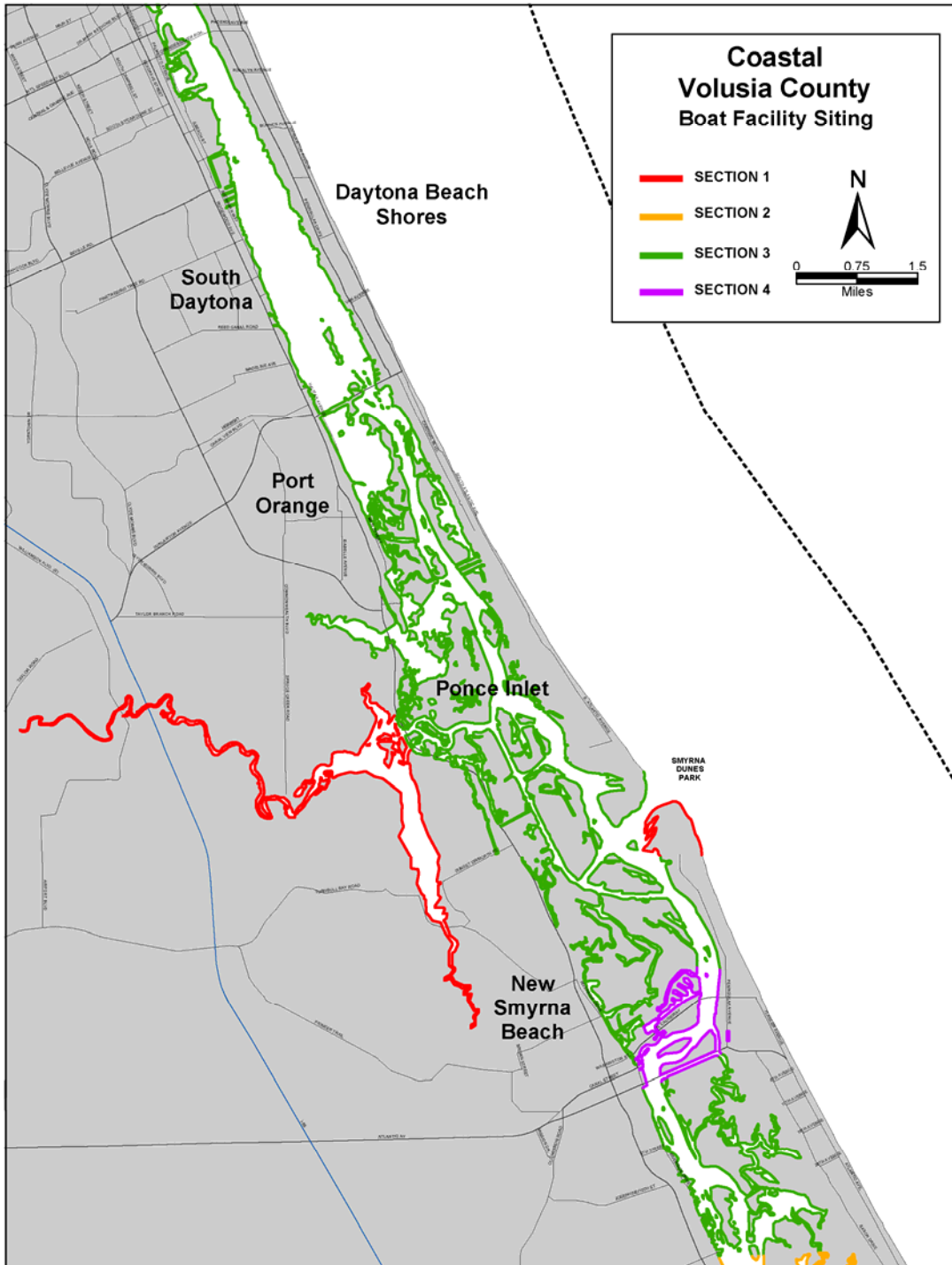


Attachment H: H/IR Boat Facility Siting Maps

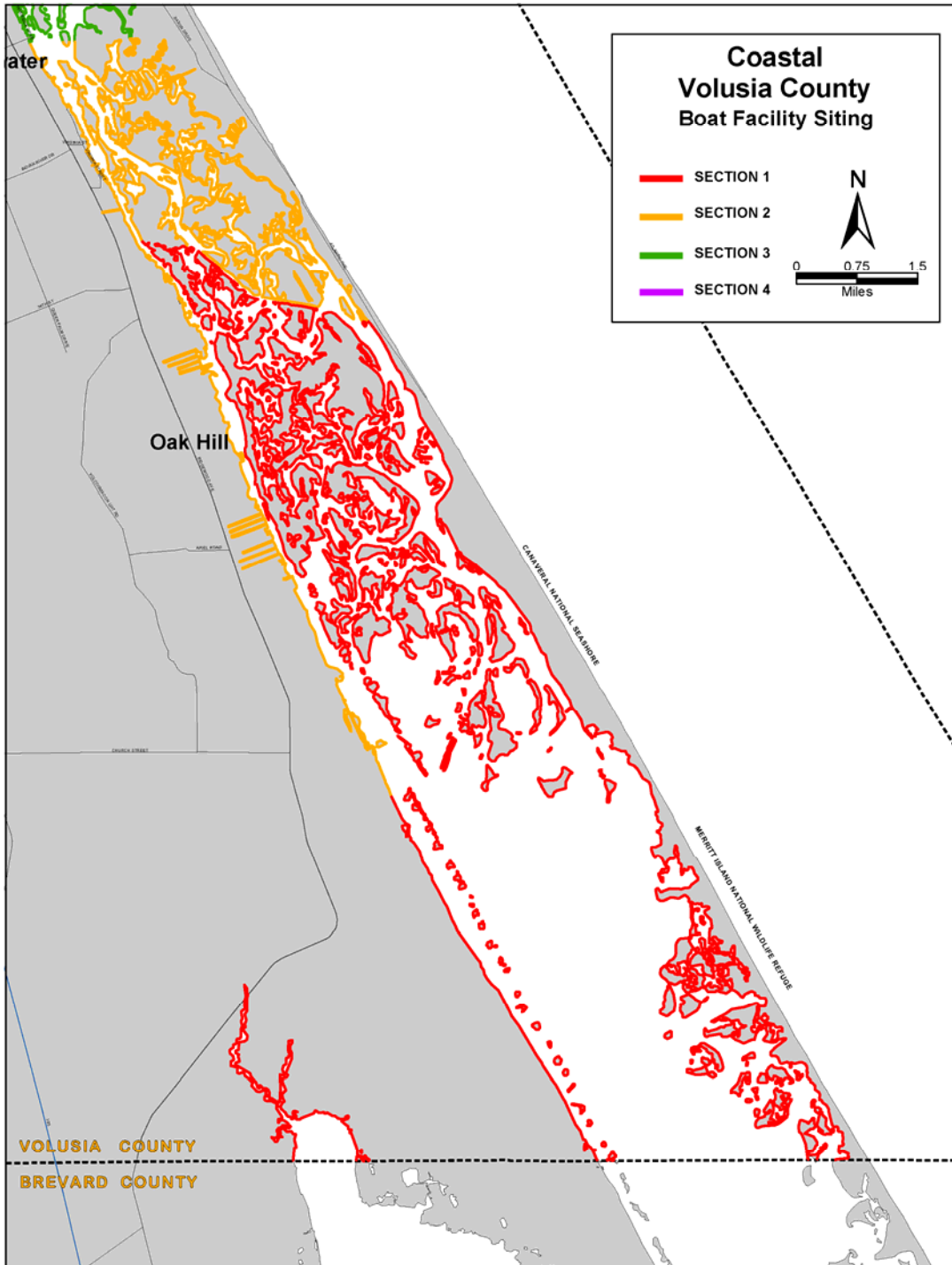
Attachment H: Halifax River/Indian River Volusia County Boat Facility Siting



Map 1a: Boat Facility Siting Recommendations
Northern Coastal Volusia County



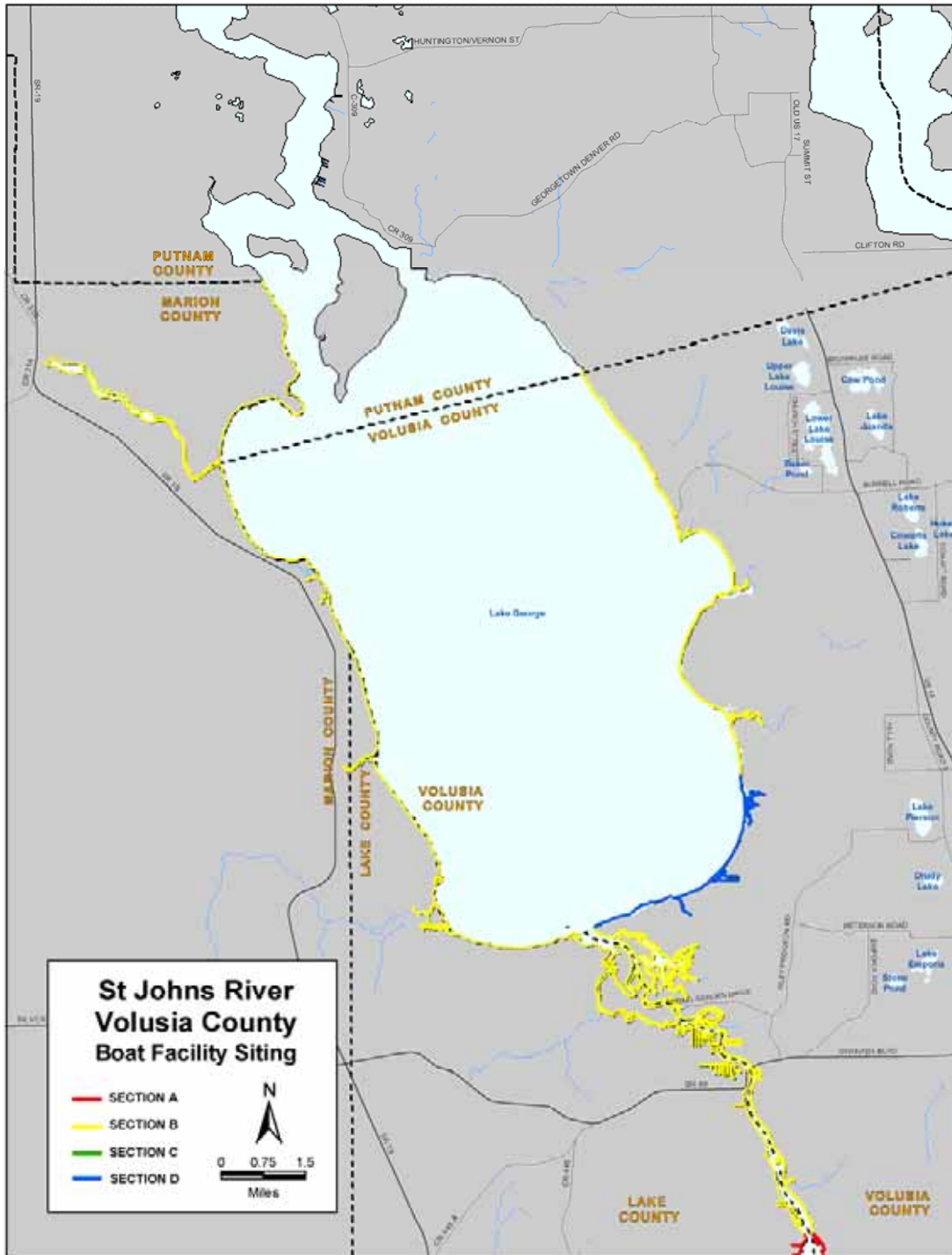
Map 1b: Boat Facility Siting Recommendations
Central Coastal Volusia County



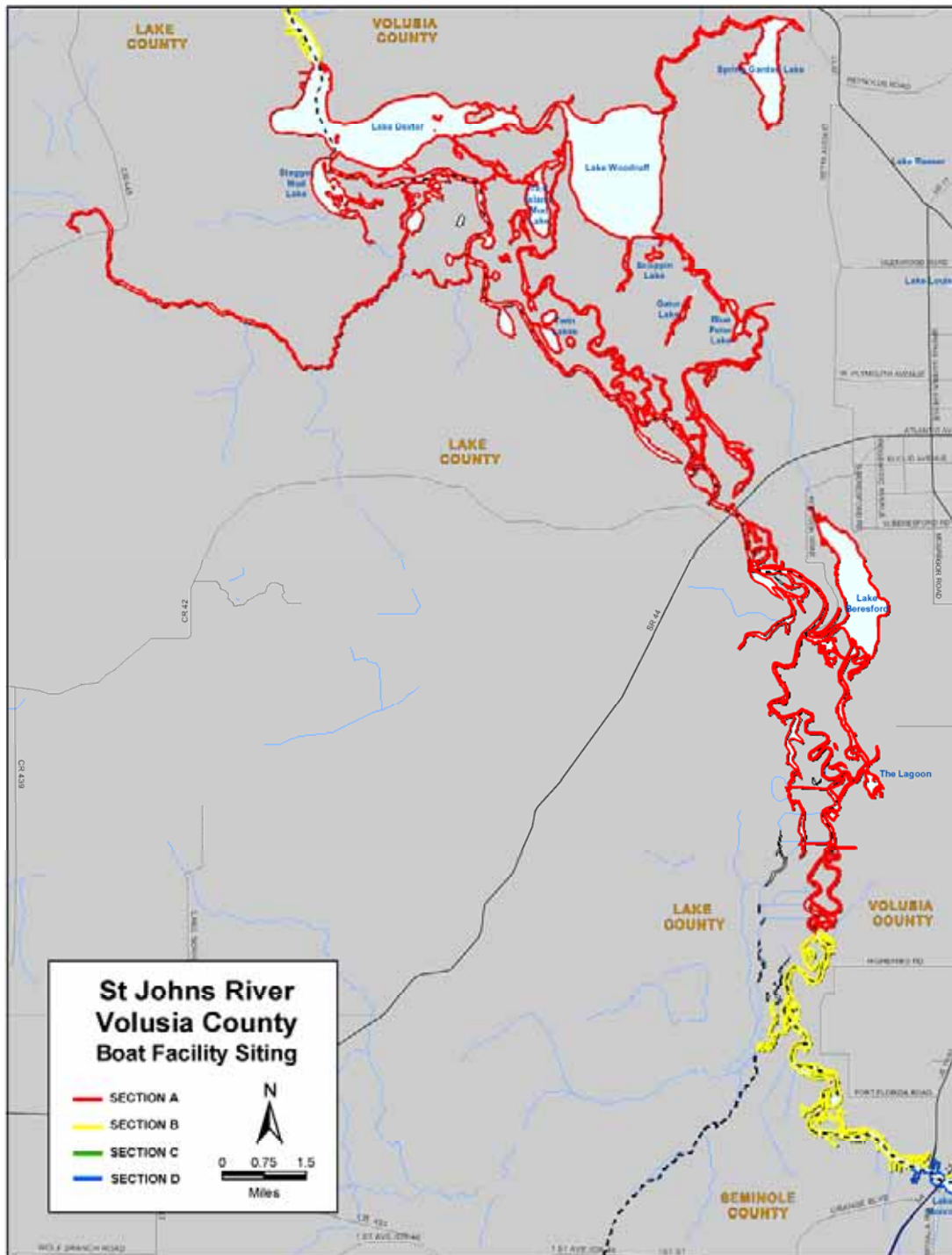
Map 1c: Boat Facility Siting Recommendations
Southern Coastal Volusia County

Attachment I: SJR Boat Facility Siting Maps

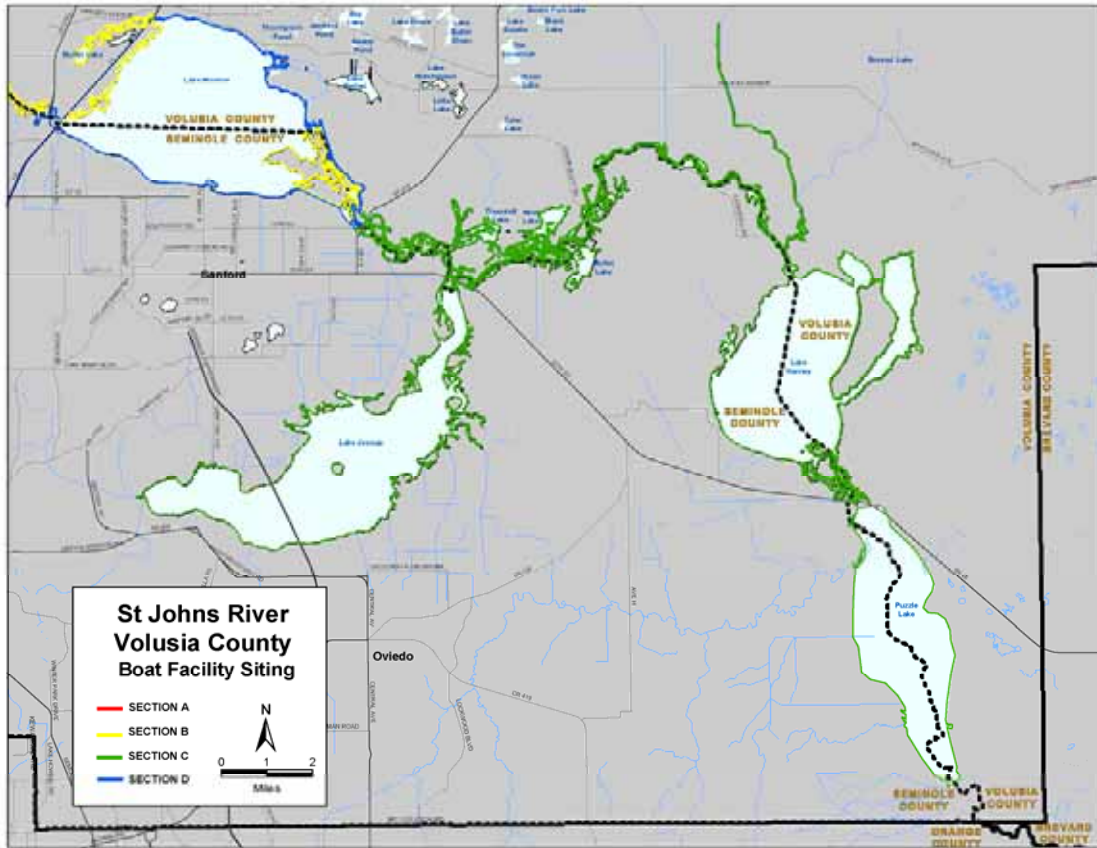
Attachment I: St. Johns River portion of Volusia County Boat Facility Siting



Map 2a: Boat Facility Siting Recommendations
Northern Volusia County along the St. Johns River



Map 2b: Boat Facility Siting Recommendations
Central Volusia County along the St. Johns River



Map 2c: Boat Facility Siting Recommendations
Southern Volusia County along the St. Johns River

Attachment J: Volusia County Comprehensive Plan Elements

VOLUSIA COUNTY COMPREHENSIVE PLAN ELEMENTS

Land development reviews, for the purposes of siting marinas, or expanding marinas shall include the following criteria with priority given to expansion of existing marinas. (Chapter 11, Section 11.2.3.3 of the Coastal Element of the VCCP.

- A) Marinas shall be located in areas where the least amount of dredging and maintenance are required and where aquatic resources (seagrass, oyster bar, freshwater submerged vegetation, etc.) shall not be adversely affected.
- B) Sufficient upland areas to accommodate needed support facilities such as adequate parking, dry storage, work areas, stormwater management facilities, and other non-water dependent uses.
- C) The location of marinas and docking facilities in areas which require minimal dredging or no dredging or filling to provide access by either canal, channel or road.
- D) The marina areas and navigation access channels shall not be dredged to depths greater than necessary to prevent prop dredging.
- E) Marina basins shall be located where there is an existing basin and access channel and adequate depths to accommodate the proposed use. A minimum of four feet below mean low water shall be required.
- F) Facilities shall be designed to maximize or improve water circulation patterns and shall not adversely affect existing circulation patterns.
- G) Any buffer zones established by FDEP's Shellfish Environmental Assessment Section shall be maintained and where necessary, enhanced or expanded.
- H) Marinas shall not be permitted in areas where approved or conditionally approved shellfish harvesting would be severely impacted and/or sections closed to shellfish harvesting.
- I) Marinas or marina expansion should not be permitted in areas that have been determined by FDEP, FWCC and USFWS to be critical to the survival of the endangered Manatee. These areas may include, but are not limited to, Manatee Sanctuaries, feeding areas or areas which have been identified in Manatee recovery plans.

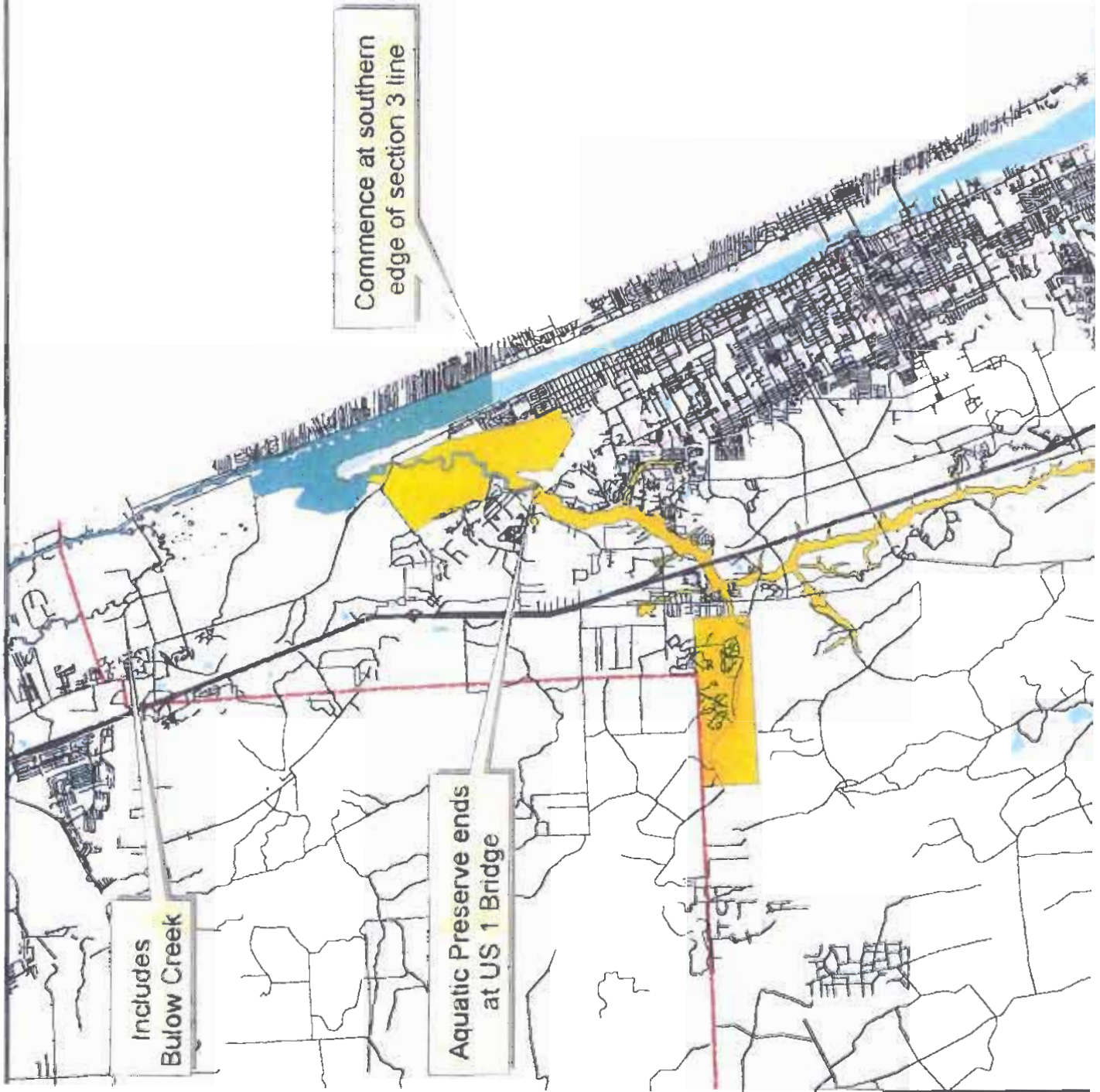
- J) Prior to the operation of any new marina fueling facility or expansion of an existing facility, fuel management/spill contingency issues shall be coordinated with the State.
- K) Sewer pump-out service and facilities shall be available and accessible to all new boat slips constructed or renovated, inside marinas.
- L) New or expanded marina facilities shall utilize dry storage to the fullest extent possible in addition to wet slips.

Resource management plans such as Aquatic Preserve management plans or Surface Water Improvement Management Plans (SWIM) plans shall be utilized in reviewing marina sites. (VCCP 11.2.3.4)

**Attachment K: Outstanding Florida Waters,
National Wildlife Refuges, National Seashore and
Aquatic Preserve Maps**

Tomoka River and Halifax River

Special Waters




LEGEND

- TIGER Roads
 - Primary road with limited access
 - Primary road
 - Secondary and connecting road
 - Local road
 - Road, major and minor categories unknown
 - Ferry crossing
 - District Boundaries/FDEP Regulatory District
 - Water Management Districts
 - Aquatic Preserves Listed in CFW
 - Special Outstanding Florida Waters
 - Water Bodies
 - Wetland
- Boundary/Florida Counties (1:40,000)

0 2 4 Miles



Tomoka Marsh Aquatic Preserve

 Aquatic Preserve

 City limits

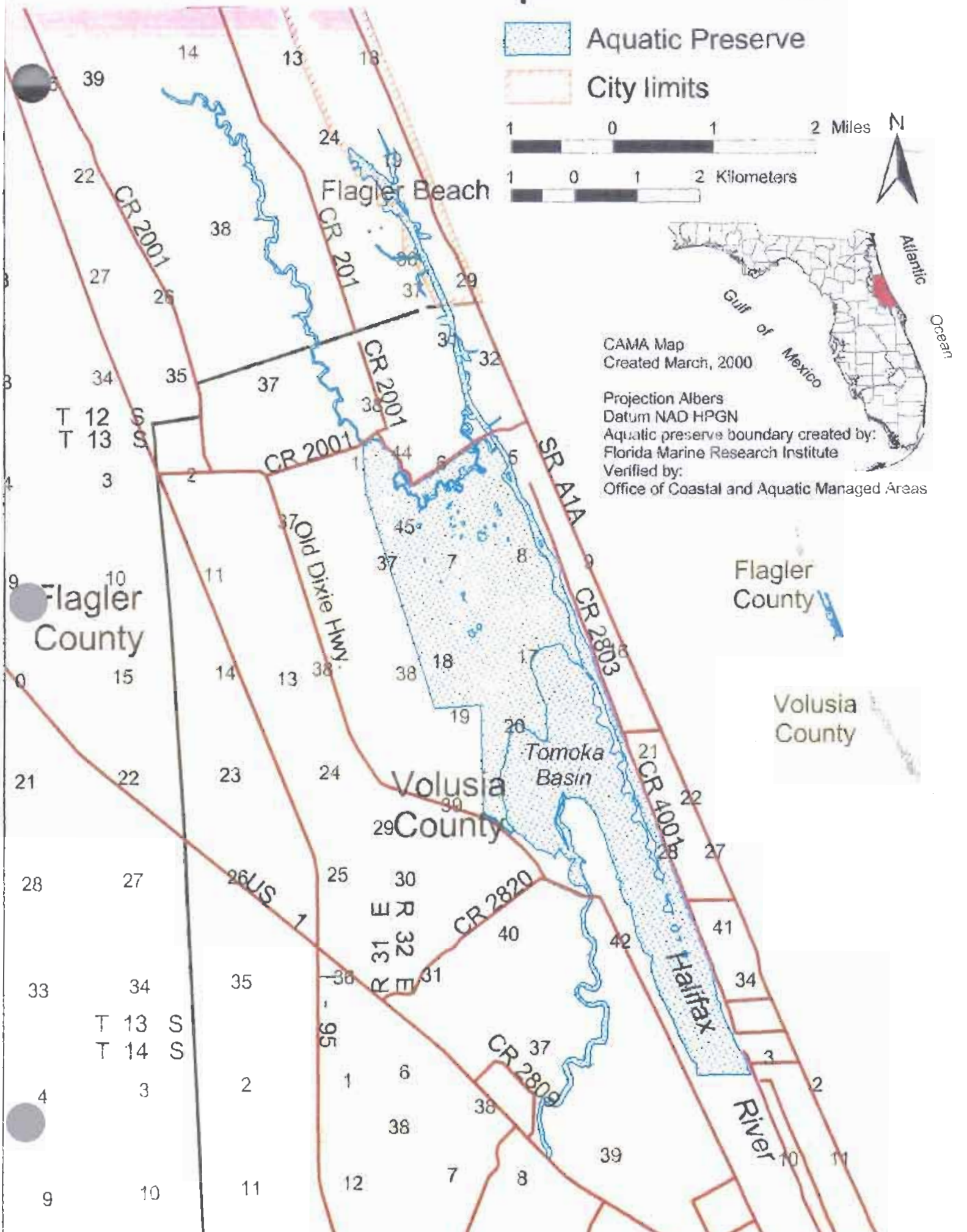
1 0 1 2 Miles

1 0 1 2 Kilometers



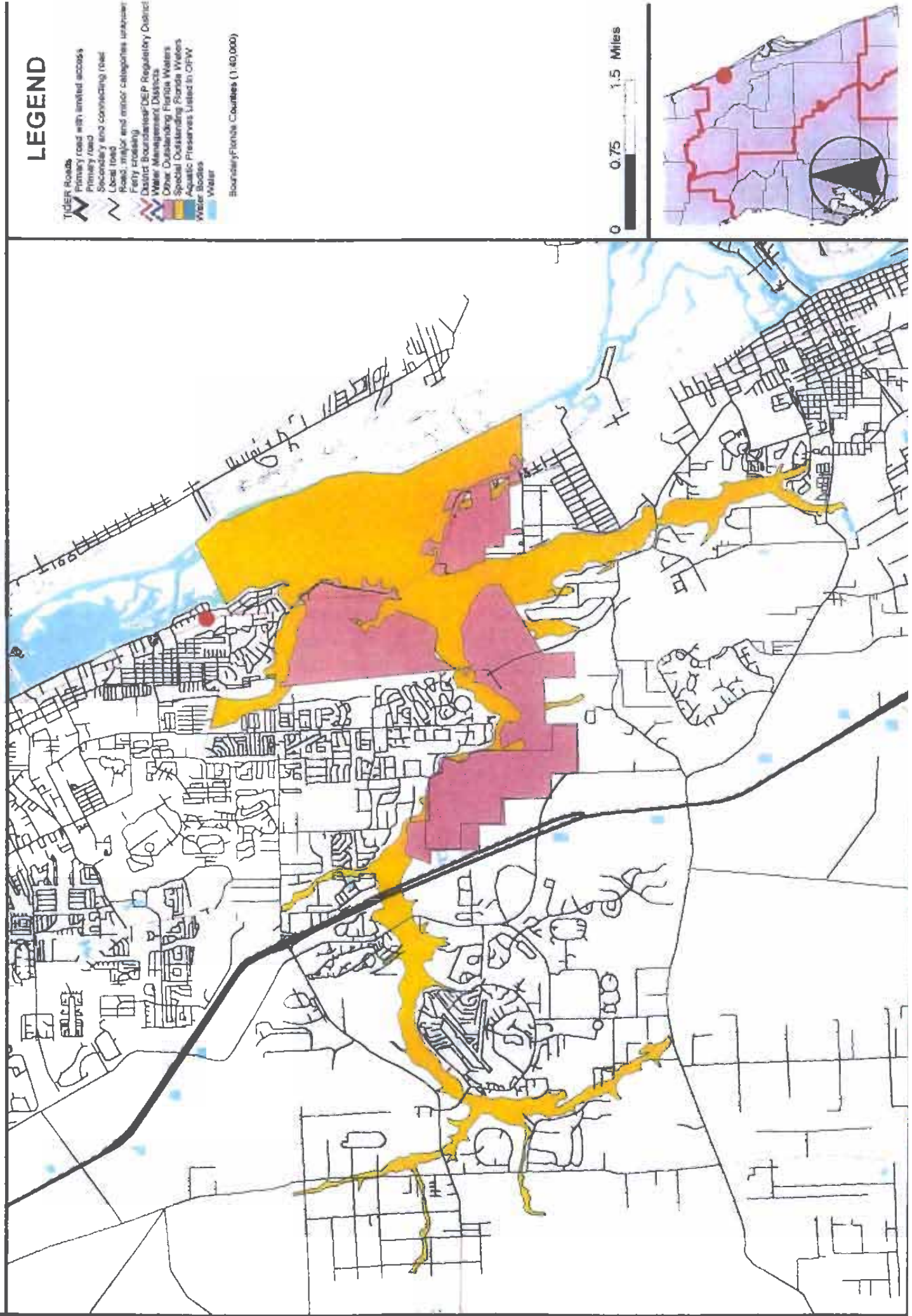
CAMA Map
Created March, 2000

Projection Albers
Datum NAD HPGN
Aquatic preserve boundary created by:
Florida Marine Research Institute
Verified by:
Office of Coastal and Aquatic Managed Areas



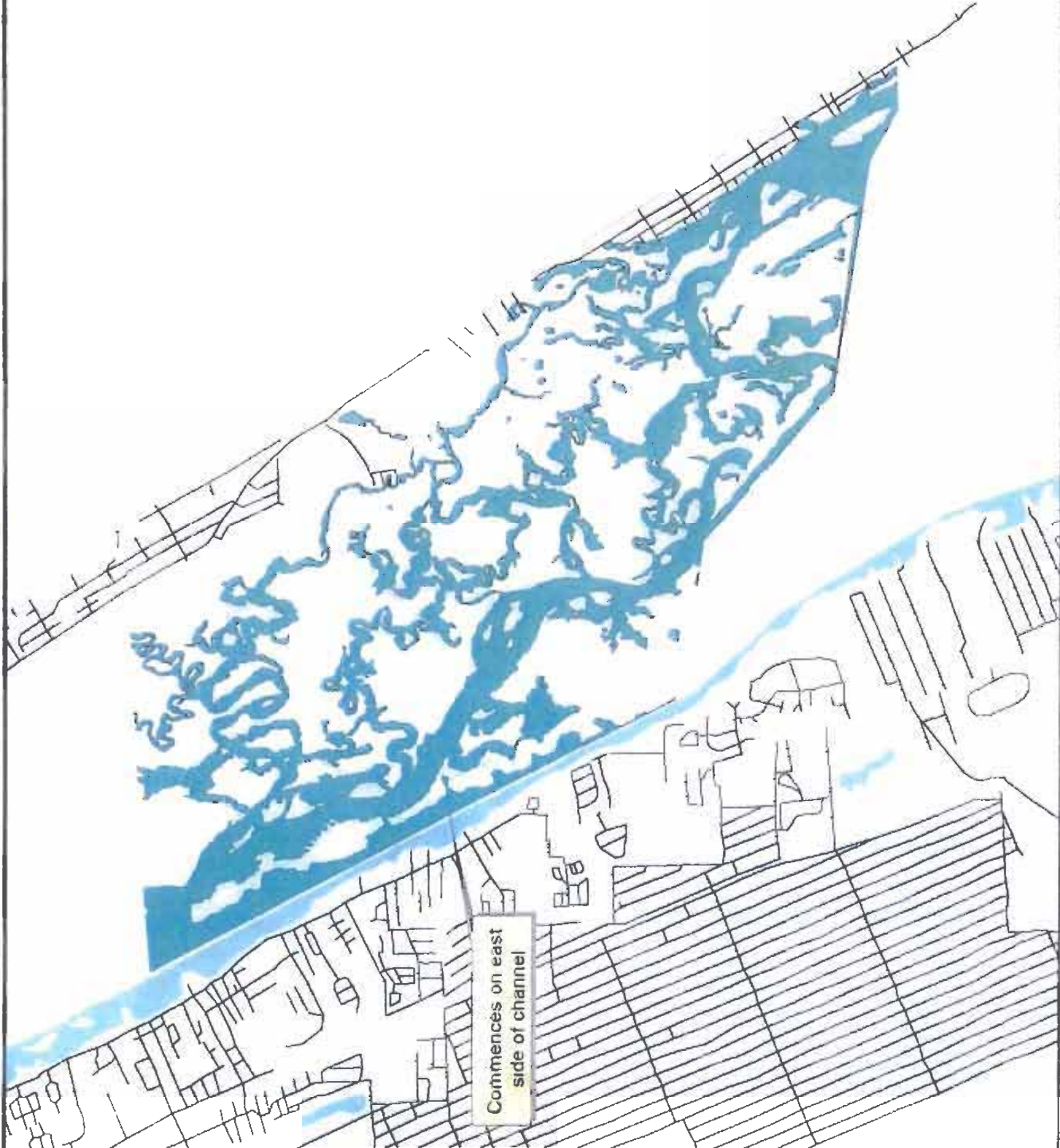
Spruce Creek

Outstanding Florida Waters



Mosquito Lagoon Aquatic Preserve

Southern limits of New Smyrna to Canaveral Nat'l Seashore

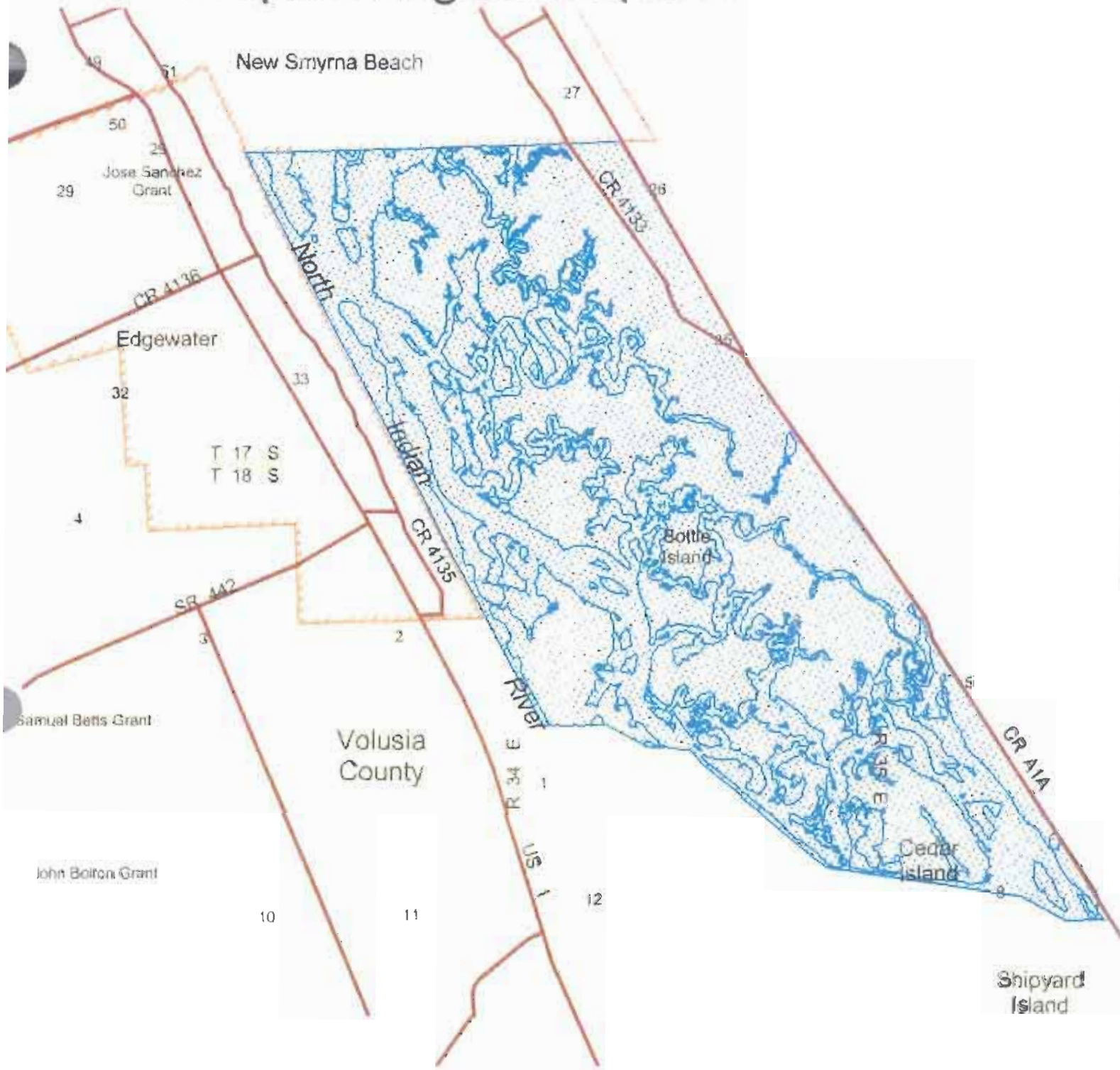




LEGEND

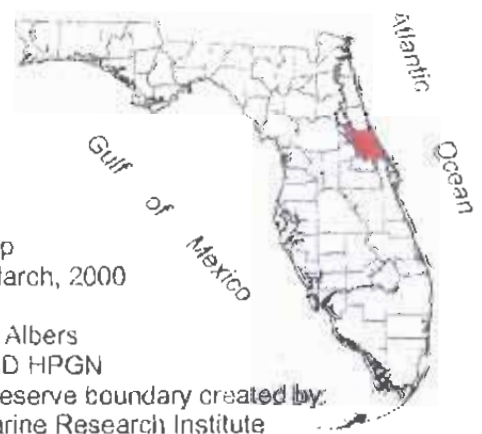
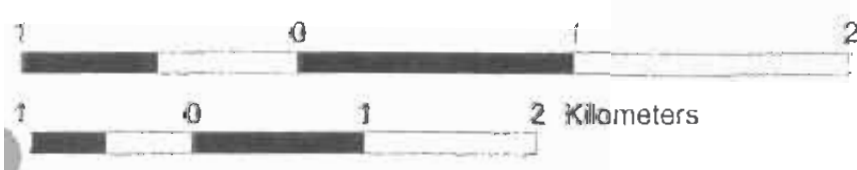
- Road
- Primary road with limited access
- Secondary road
- Local road
- Road (major) with inner categories: unimproved, ferry crossing
- District Boundary (DEP Regulatory District)
- Water Management District
- Other Outstanding Florida Waters
- Special Outstanding Florida Waters
- Aquatic Preserves Listed in OFW
- Water Bodies
- Water
- Boundary/Plat (County (1:40,000))



Mosquito Lagoon Aquatic Preserve



 Aquatic Preserve
 City limits

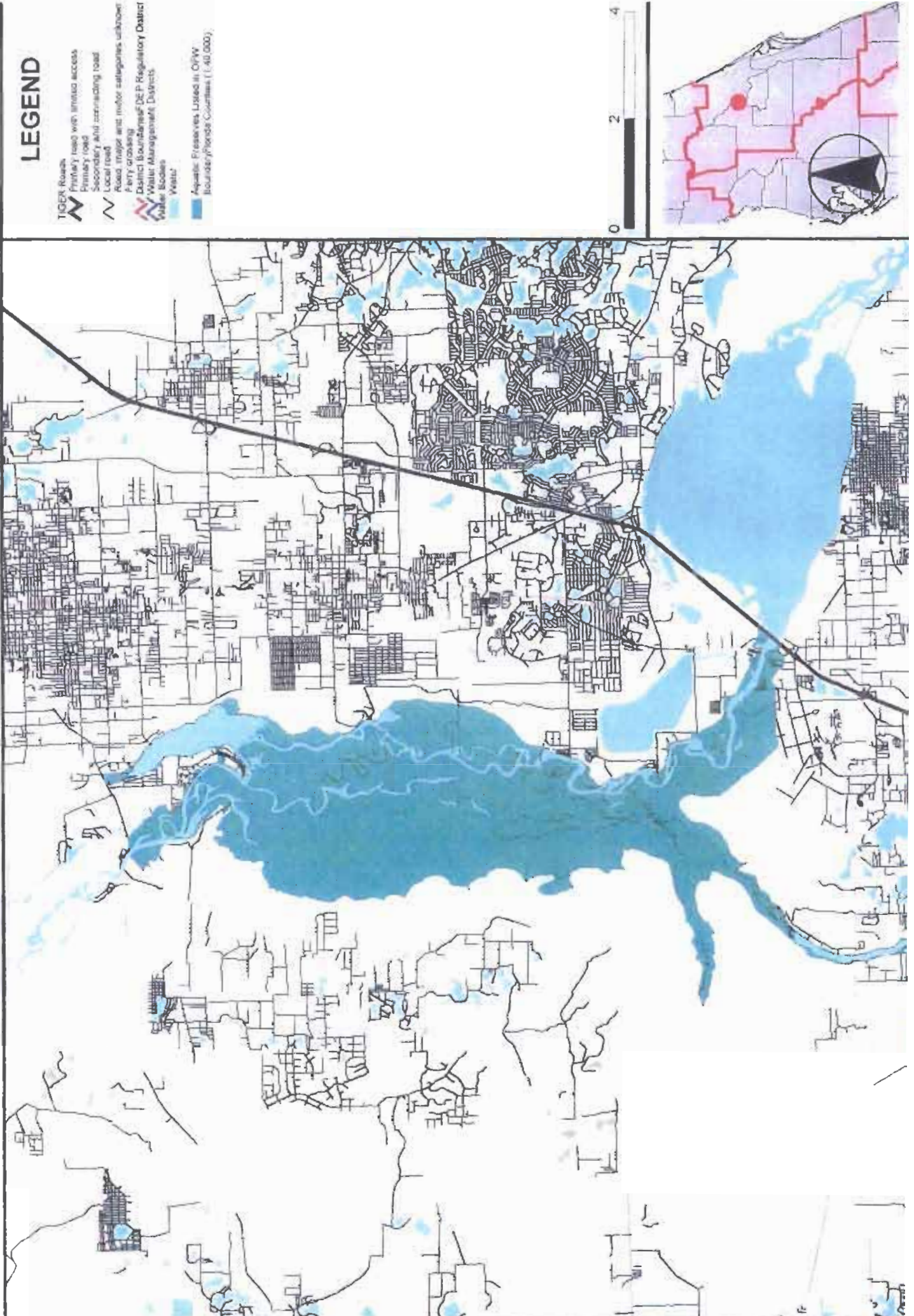


CAMA Map
Created March, 2000

Projection Albers
Datum NAD HPGN
Aquatic preserve boundary created by:
Florida Marine Research Institute
Verified by:
Office of Coastal and Aquatic Managed Areas

St. Johns River Aquatic Preserve

I-4 to SR 44, including Lake Beresford





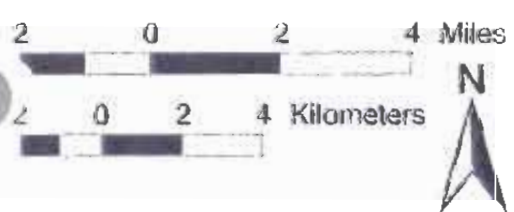
Wekiva River Aquatic Preserve

Lake County

Orange County



-  Aquatic Preserve
-  City limits

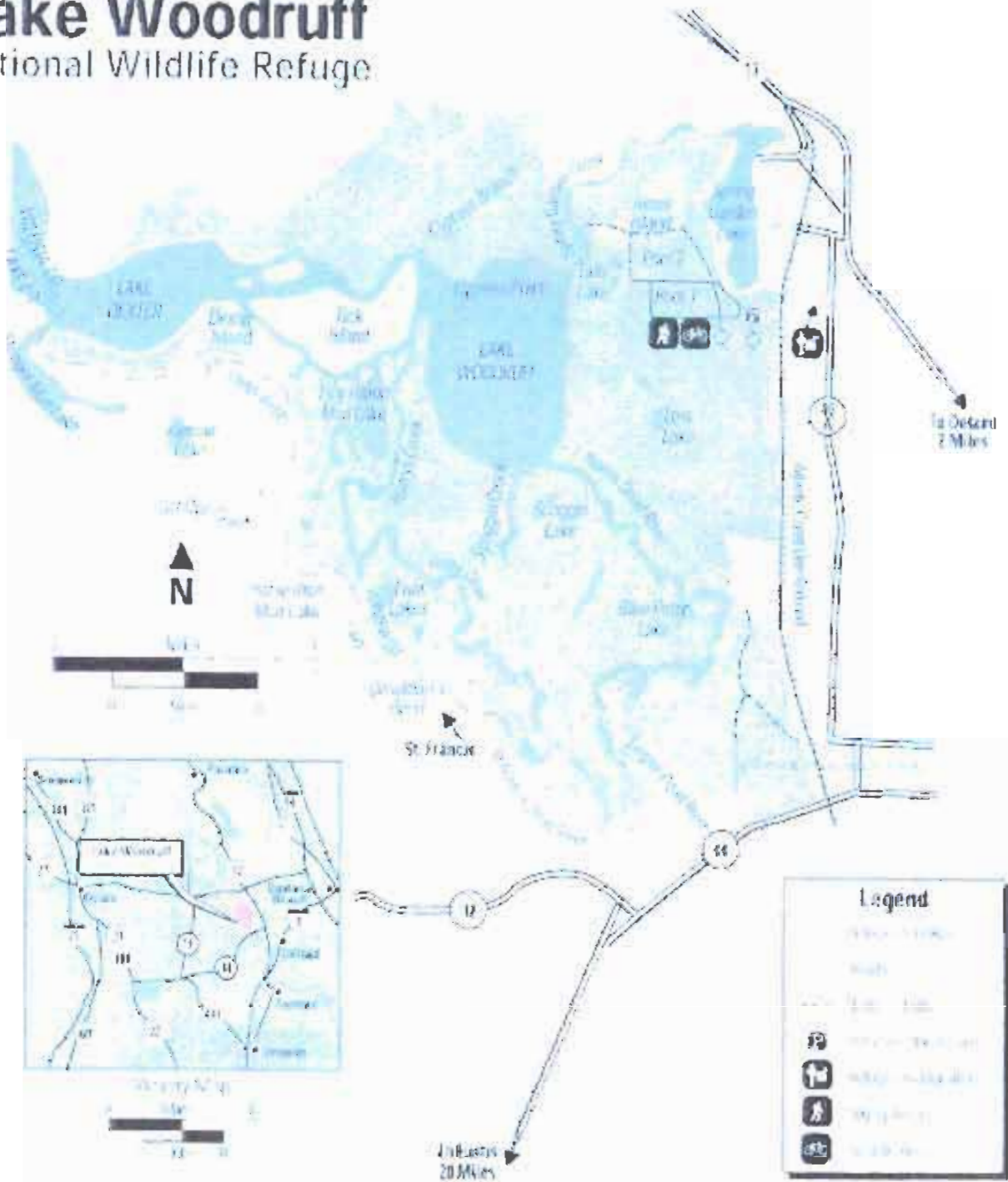


CAMA Map
Created March, 2000

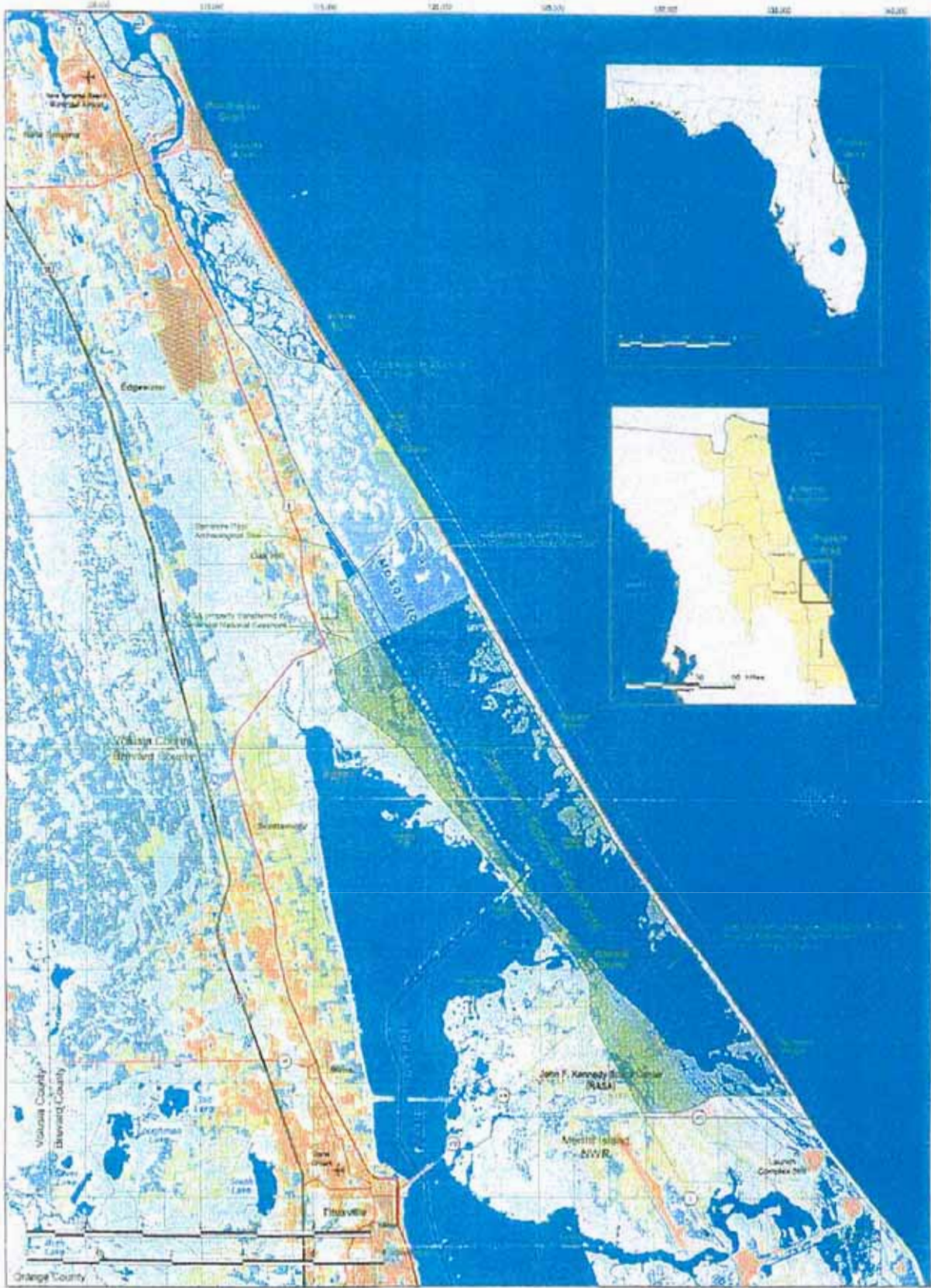
Projection Albers
Datum NAD HPGN
Aquatic preserve boundary created by:
Florida Marine Research Institute
Verified by:
Office of Coastal and Aquatic Managed Areas

Lake Woodruff

National Wildlife Refuge



The refuge is located 25 miles west of Daytona Beach; 1 block west of U.S. Highway 17 in DeLeon Springs, FL.




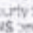
 National Park Service
Capeverde National Seashore

 St. Johns River Water Management District

 UCF University of Central Florida

 Florida Center for Environmental Studies

BOUNDARIES

- Legend**
-  NASA property administered by Capeverde National Seashore
 -  NASA property partly administered by Capeverde National Seashore and Merritt Island National Wildlife Refuge
 -  Land owned by Capeverde National Seashore
 -  NASA property transferred to Capeverde National Seashore
 -  Non state
 -  Jeep trail
 -  Local road
 -  State road
 -  US highway
 -  County boundaries
 -  CMS boundaries
 -  Submerged Waterway

Digitized from Capeverde National Seashore Master Plan maps (Figure 2.2)

UTM Zone 17
5,000 meter grid

Date	Scale
11-2000	1:105,000