

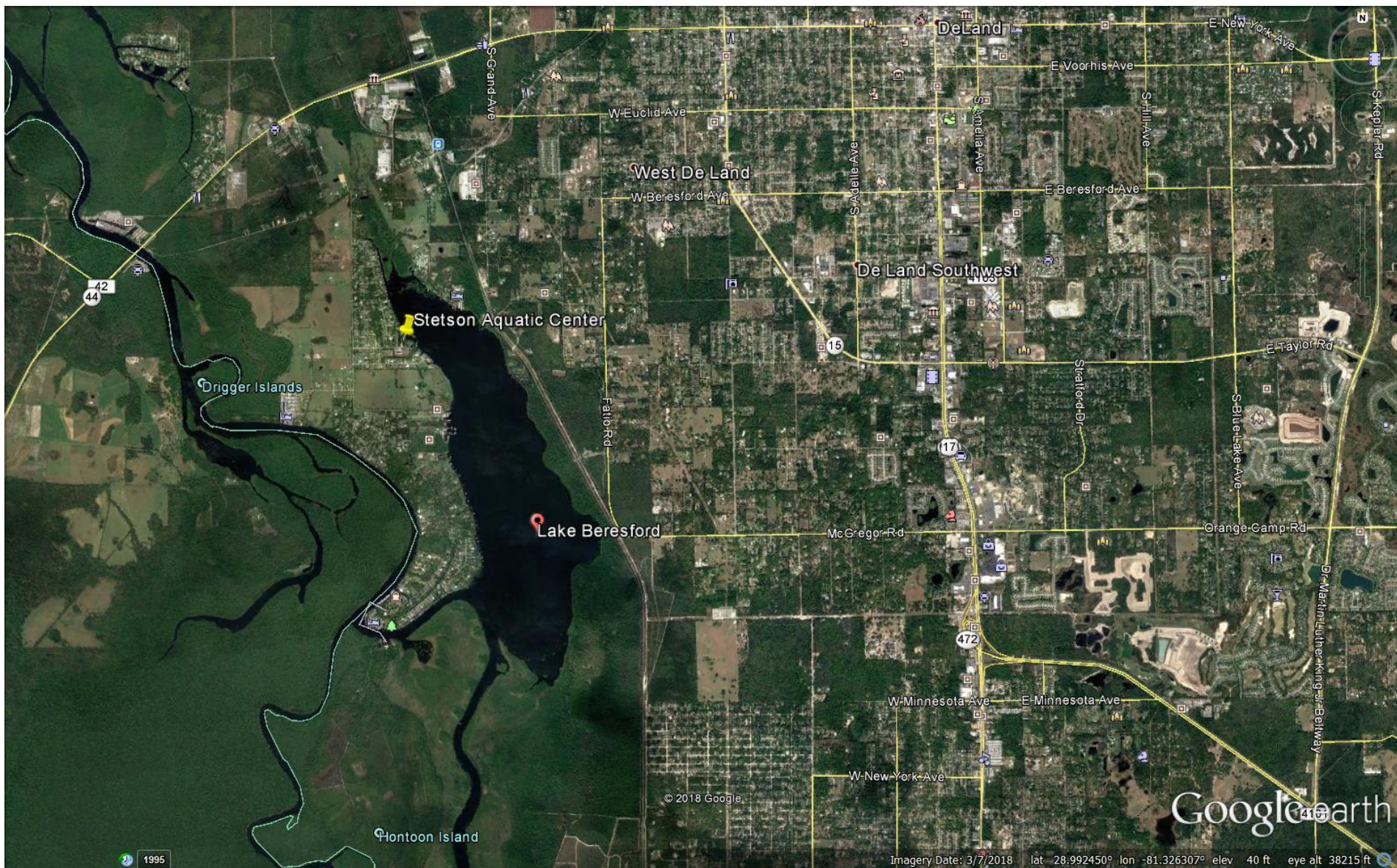
Green Infrastructure in Volusia County: Discussion of Barriers and Opportunities



Sandra Stetson Aquatic Center



- Building to serve as the headquarters for the Stetson rowing team (first floor) and the Institute for Water and Environmental Resilience (second floor)
- Primary gift funding for the building came from Sandra Stetson Martinuzzi
- Funding for the site also provided through the Volusia County ECHO Grant Program





STETSON UNIVERSITY AQUATICS CENTER

Volusia County, Florida

BID SET

NOT FOR CONSTRUCTION
SUBMITTAL

11-15-16

PARCEL ID NUMBER
23-17-29-04-00-0030

Owner

STETSON UNIVERSITY
421 N. WOODLAND BLVD
DELAND, FL 32723
PHONE: 386-822-8808
CONTACT: AL ALLEN

Civil Engineer

DEWBERRY ENGINEERS, INC.
110 WEST INDIANA AVENUE
SUITE 202
DELAND, FL 32720
PHONE: 386-630-2106
CONTACT: JOHN SCHULTHEIS, PE

Architect

ANTHONY J. MAZZA, AIA
820 COMPTON WAY
MELBOURNE, FL 32940
PHONE: 321-255-2050
CONTACT: ANTHONY MAZZA, AIA

Architect

PRESTON T. PHILLIPS, ARCHITECT
P.O. BOX 3037
BRIDGEHAMPTON, NY 11937
PHONE: 631-437-1237
CONTACT: PRESTON PHILLIPS, ARCHITECT

Landscape Architect

GAI CONSULTANTS
618 EAST SOUTH STREET
SUITE 100
ORLANDO, FL 32801
PHONE: 407-423-6398
CONTACT: KEVIN AUST, PLA

Geotechnical Engineer

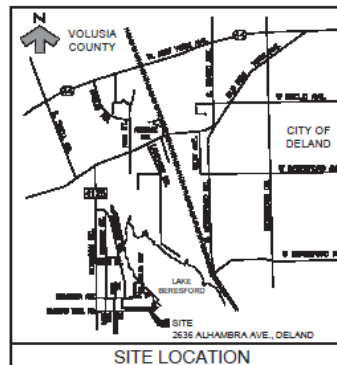
BECHTOL ENGINEERING & TESTING, INC.
605 WEST NEW YORK AVE., SUITE A
DELAND, FL 32720
PHONE: 386-734-8444
CONTACT: TOM BECHTOL, PE

Surveyor

DEWBERRY
131 WEST KALEY STREET
ORLANDO, FL 32806
PHONE: 321-354-9626
CONTACT: WILLIAM DONLEY, PSM

Environmental

DEWBERRY
800 NORTH MAGNOLIA AVE
ORLANDO, FL 32803
PHONE: 321-354-9727
CONTACT: NICOLE GOUGH



NOT TO SCALE SECTION 24, T 17 S, R 29 E



Dewberry Engineers Inc.
115 WEST PALM BEACH AVENUE
SUITE 200
PALM BEACH, FLORIDA 33480
PHONE: 561-855-0700
WWW.DEWBERRY.COM

STETSON UNIVERSITY
AQUATICS CENTER

STETSON UNIVERSITY
DELAND, FLORIDA 32720

SCALE

NOT PLAN

SCALE NORTH

REV	DATE	BY	DESCRIPTION

REVISIONS

DRAWN BY 12

APPROVED BY 12

CHECKED BY 12

DATE 11/15/16

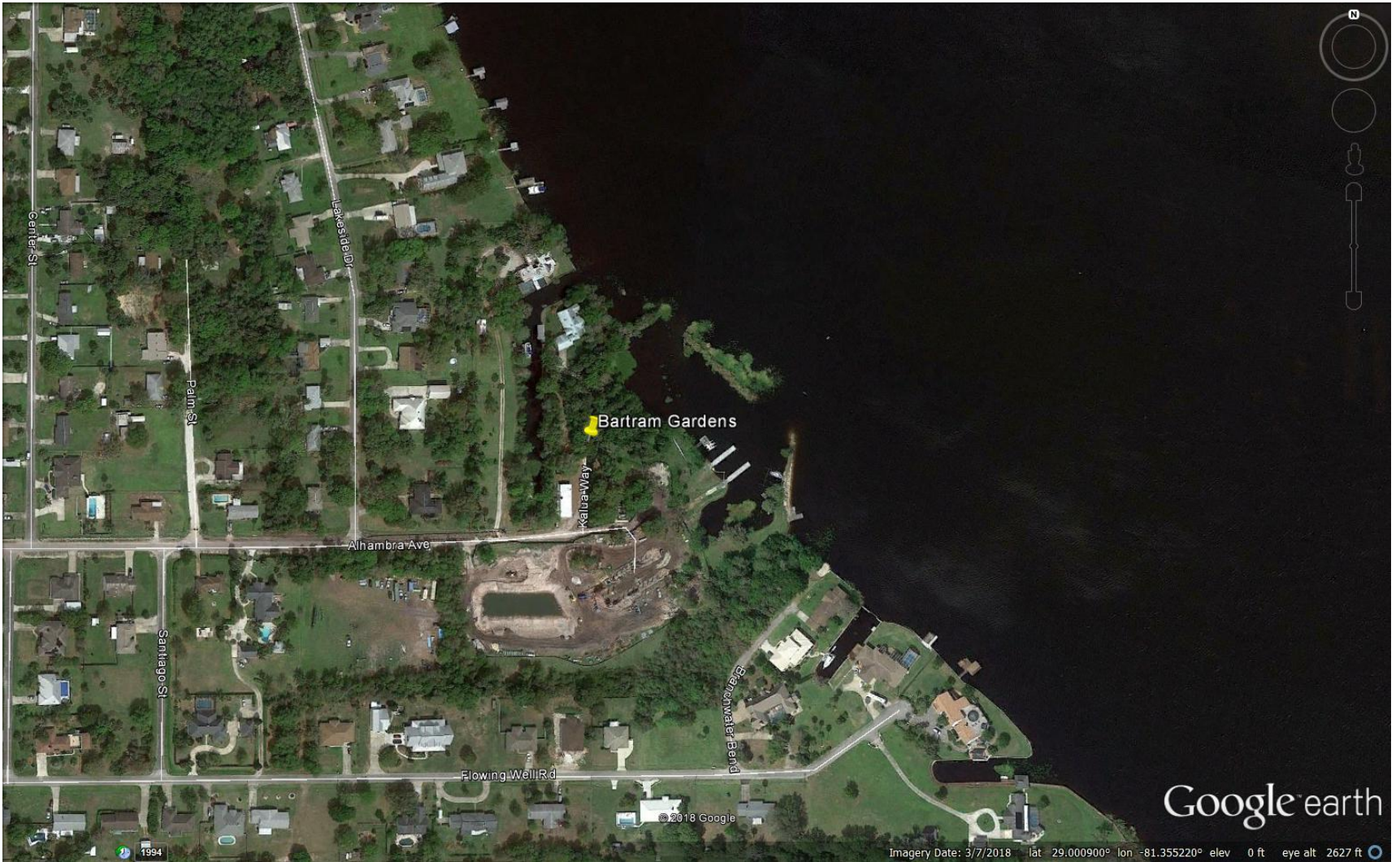
TITLE

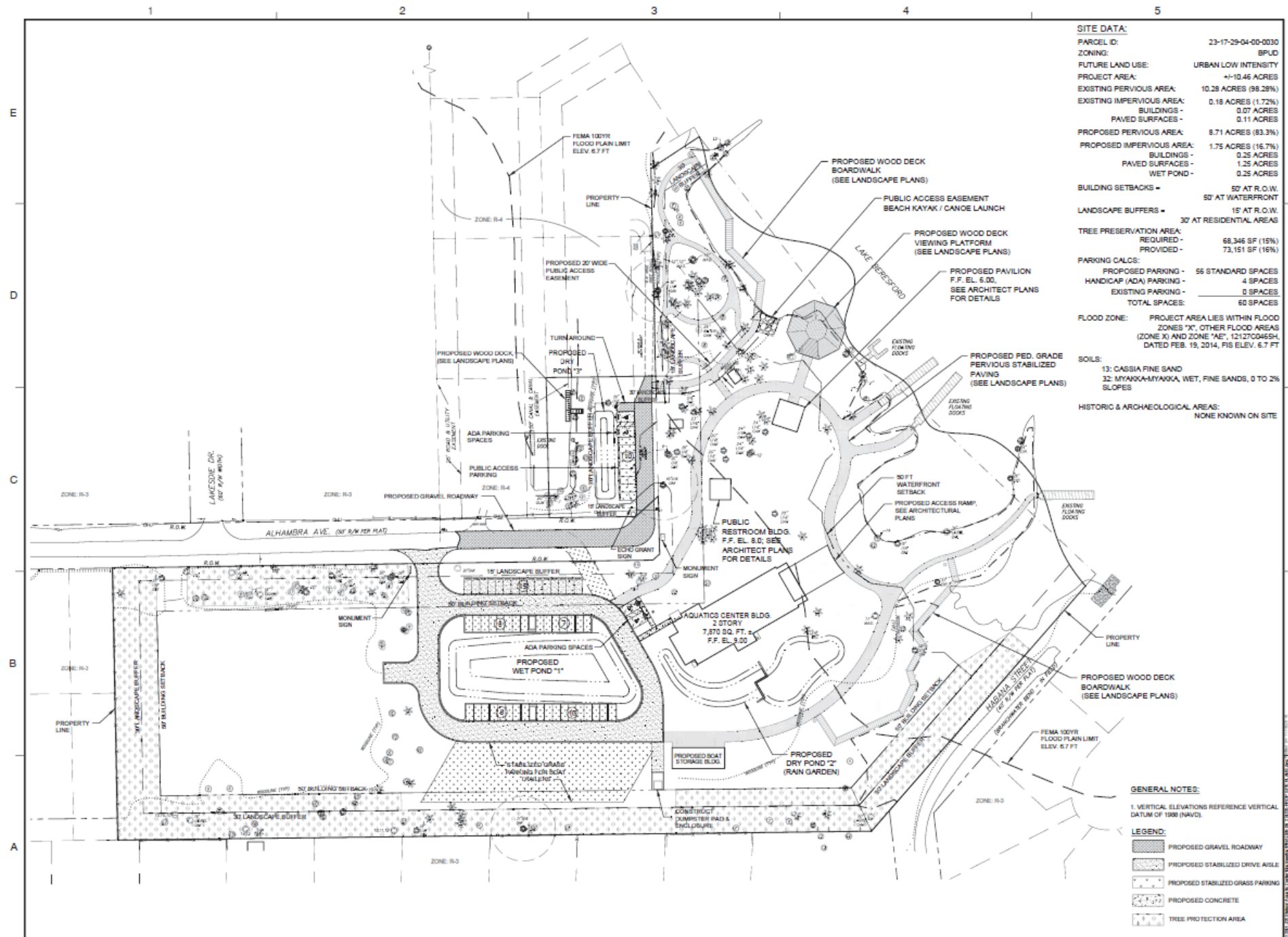
COVER SHEET

PROJECT NO. 8000007 DEB-002

C01

SHEET NO.





LAKE
BERESFORD

TYPICAL SODDED SWALE DETAIL
100-75-35-14

FEMA 484VD
FLOOD PLAIN LIMIT
CLEV. 6.7 FT

PROPOSED
DRY POND 2
WI UNDERDRAINS
TOP EL. - 5.00
BOTTOM EL. - 5.00
LAYOUT SHEET C14

— PROPOSED PAVILION
F.F. EL. 6.00
SEE ARCHITECT PLANS
FOR DETAILS

1985 1986
 1987 1988
 1989 1990

— PUBLIC RESTROOM BLDG.
F.F. EL. 8.0
SEE ARCHITECT PLANS
FOR DETAILS

APPROXIMATE EDGE OF
H4 SEP 43 LOCATED
ON 10/11/2015.
H4 SEP EL. 41.3'.

ETLAND
ARYSONC DOWAC
MESITE ———
BENCHMARK

EXTEND EXISTING
10' & CONSTRUCT
WINDY 0.00

TO EXISTING 24" R
CONSTRUCT ME

2.00
1.00
0.00

FEMA 100YR
FLOOD PLAIN

LIMIT
ELEV. 6.7 FT

12

20

1

GEN

VERT

LEGEND:

— 22.00
(M.E.)

$$\frac{1}{2} \frac{d}{dt} \left(\frac{1}{2} \frac{d}{dt} \right)$$

11

1. $\frac{1}{2}$

GENERAL NOTES

* VERTICAL ELEVATIONS REFERRED TO THE VERTICAL DATUM OF 1988 (NAVD83)

LEGEND

9:25 AM

● — \$2.00

1999, 2000, 2001, 2002, 2003, 2004, 2005, 2006, 2007, 2008, 2009, 2010, 2011, 2012, 2013, 2014, 2015, 2016, 2017, 2018, 2019, 2020, 2021, 2022, 2023, 2024, 2025, 2026, 2027, 2028, 2029, 2030, 2031, 2032, 2033, 2034, 2035, 2036, 2037, 2038, 2039, 2040, 2041, 2042, 2043, 2044, 2045, 2046, 2047, 2048, 2049, 2050, 2051, 2052, 2053, 2054, 2055, 2056, 2057, 2058, 2059, 2060, 2061, 2062, 2063, 2064, 2065, 2066, 2067, 2068, 2069, 2070, 2071, 2072, 2073, 2074, 2075, 2076, 2077, 2078, 2079, 2080, 2081, 2082, 2083, 2084, 2085, 2086, 2087, 2088, 2089, 2090, 2091, 2092, 2093, 2094, 2095, 2096, 2097, 2098, 2099, 2100, 2101, 2102, 2103, 2104, 2105, 2106, 2107, 2108, 2109, 2110, 2111, 2112, 2113, 2114, 2115, 2116, 2117, 2118, 2119, 2120, 2121, 2122, 2123, 2124, 2125, 2126, 2127, 2128, 2129, 2130, 2131, 2132, 2133, 2134, 2135, 2136, 2137, 2138, 2139, 2140, 2141, 2142, 2143, 2144, 2145, 2146, 2147, 2148, 2149, 2150, 2151, 2152, 2153, 2154, 2155, 2156, 2157, 2158, 2159, 2160, 2161, 2162, 2163, 2164, 2165, 2166, 2167, 2168, 2169, 2170, 2171, 2172, 2173, 2174, 2175, 2176, 2177, 2178, 2179, 2180, 2181, 2182, 2183, 2184, 2185, 2186, 2187, 2188, 2189, 2190, 2191, 2192, 2193, 2194, 2195, 2196, 2197, 2198, 2199, 2200, 2201, 2202, 2203, 2204, 2205, 2206, 2207, 2208, 2209, 2210, 2211, 2212, 2213, 2214, 2215, 2216, 2217, 2218, 2219, 2220, 2221, 2222, 2223, 2224, 2225, 2226, 2227, 2228, 2229, 2230, 2231, 2232, 2233, 2234, 2235, 2236, 2237, 2238, 2239, 2240, 2241, 2242, 2243, 2244, 2245, 2246, 2247, 2248, 2249, 2250, 2251, 2252, 2253, 2254, 2255, 2256, 2257, 2258, 2259, 2260, 2261, 2262, 2263, 2264, 2265, 2266, 2267, 2268, 2269, 2270, 2271, 2272, 2273, 2274, 2275, 2276, 2277, 2278, 2279, 2280, 2281, 2282, 2283, 2284, 2285, 2286, 2287, 2288, 2289, 2290, 2291, 2292, 2293, 2294, 2295, 2296, 2297, 2298, 2299, 2300, 2301, 2302, 2303, 2304, 2305, 2306, 2307, 2308, 2309, 2310, 2311, 2312, 2313, 2314, 2315, 2316, 2317, 2318, 2319, 2320, 2321, 2322, 2323, 2324, 2325, 2326, 2327, 2328, 2329, 2330, 2331, 2332, 2333, 2334, 2335, 2336, 2337, 2338, 2339, 2340, 2341, 2342, 2343, 2344, 2345, 2346, 2347, 2348, 2349, 2350, 2351, 2352, 2353, 2354, 2355, 2356, 2357, 2358, 2359, 2360, 2361, 2362, 2363, 2364, 2365, 2366, 2367, 2368, 2369, 2370, 2371, 2372, 2373, 2374, 2375, 2376, 2377, 2378, 2379, 2380, 2381, 2382, 2383, 2384, 2385, 2386, 2387, 2388, 2389, 2390, 2391, 2392, 2393, 2394, 2395, 2396, 2397, 2398, 2399, 2400, 2401, 2402, 2403, 2404, 2405, 2406, 2407, 2408, 2409, 2410, 2411, 2412, 2413, 2414, 2415, 2416, 2417, 2418, 2419, 2420, 2421, 2422, 2423, 2424, 2425, 2426, 2427, 2428, 2429, 2430, 2431, 2432, 2433, 2434, 2435, 2436, 2437, 2438, 2439, 2440, 2441, 2442, 2443, 2444, 2445, 2446, 2447, 2448, 2449, 2450, 2451, 2452, 2453, 2454, 2455, 2456, 2457, 2458, 2459, 2460, 2461, 2462, 2463, 2464, 2465, 2466, 2467, 2468, 2469, 2470, 2471, 2472, 2473, 2474, 2475, 2476, 2477, 2478, 2479, 2480, 2481, 2482, 2483, 2484, 2485, 2486, 2487, 2488, 2489, 2490, 2491, 2492, 2493, 2494, 2495, 2496, 2497, 2498, 2499, 2500, 2501, 2502, 2503, 2504, 2505, 2506, 2507, 2508, 2509, 2510, 2511, 2512, 2513, 2514, 2515, 2516, 2517, 2518, 2519, 2520, 2521, 2522, 2523, 2524, 2525, 2526, 2527, 2528, 2529, 2530, 2531, 2532, 2533, 2534, 2535, 2536, 2537, 2538, 2539, 2540, 2541, 2542, 2543, 2544, 2545, 2546, 2547, 2548, 2549, 2550, 2551, 2552, 2553, 2554, 2555, 2556, 2557, 2558, 2559, 2560, 2561, 2562, 2563, 2564, 2565, 2566, 2567, 2568, 2569, 2570, 2571, 2572, 2573, 2574, 2575, 2576, 2577, 2578, 2579, 2580, 2581, 2582, 2583, 2584, 2585, 2586, 2587, 2588, 2589, 2590, 2591, 2592, 2593, 2594, 2595, 2596, 2597, 2598, 2599, 2600, 2601, 2602, 2603, 2604, 2605, 2606, 2607, 2608, 2609, 2610, 2611, 2612, 2613, 2614, 2615, 2616, 2617, 2618, 2619, 2620, 2621, 2622, 2623, 2624, 2625, 2626, 2627, 2628, 2629, 2630, 2631, 2632, 2633, 2634, 2635, 2636, 2637, 2638, 2639, 2640, 2641, 2642, 2643, 2644, 2645, 2646, 2647, 2648, 2649, 2650, 2651, 2652, 2653, 2654, 2655, 2656, 2657, 2658, 2659, 2660, 2661, 2662, 2663, 2664, 2665, 2666, 2667, 2668, 2669, 2670, 2671, 2672, 2673, 2674, 2675, 2676, 2677, 2678, 2679, 2680, 26

— 5 —

100

 Springer

• [Download the PDF](#)

October 27 Event

Participatory charrette to brainstorm long-term landscape performance metrics and research protocols at the Sandra Stetson Aquatic Center (Start time TBD)

Dr. Jon Calabria, Associate Professor of Landscape Architecture, University of Georgia

