



Volusia Forever Advisory Committee Meeting

March 10, 2022



COMMITTEE RANKING PROCESS

Group A

- Properties that receive highest priority shall significantly further program goals
- Should be eligible for matching funds
- Includes any project boundaries of Florida Forever project areas

Group A properties are forwarded to County Council for authorization to proceed with the acquisition process.

Group B

- Properties that are important, but not the highest priority based on the evaluation criteria

County Council may move a property from one group to another, but may not add a property to the ranking group that has not first been determined eligible by the committee.



Land Use & Zoning

- **Future land use designation** generally guides the type of use and the maximum density and intensity allowed within each designation.
- **Zoning classification** explains how those uses can be built. For example, a zoning classification identifies the size of a required front yard, as well as allowable building height and the number of parking spaces for each type of use.



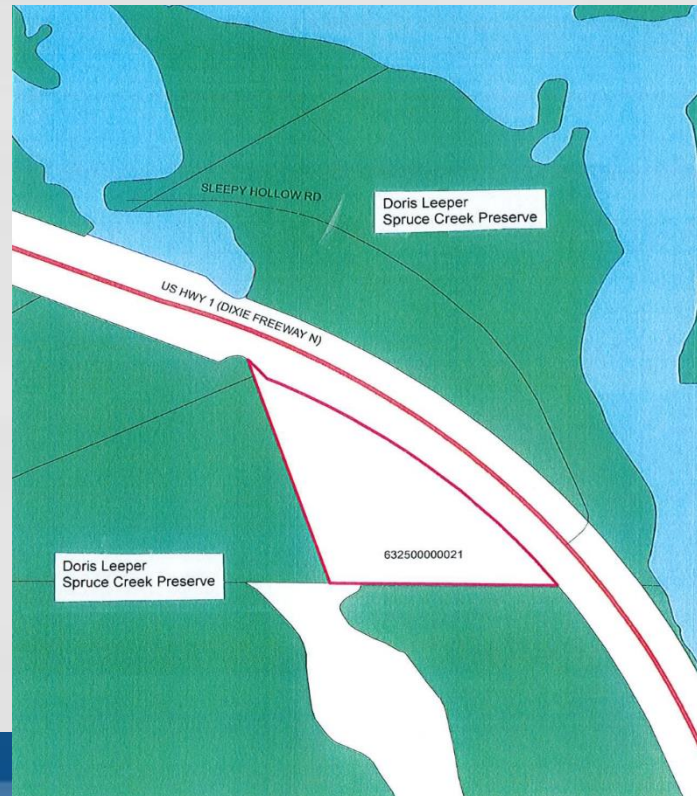
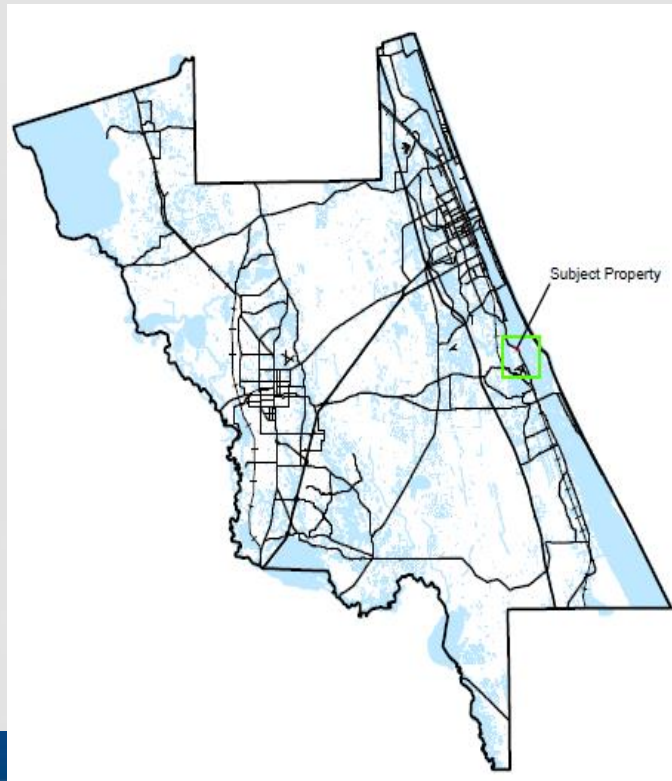
NRMA & ECO Overlays

- Properties within the **Natural Resource Management Areas (NRMA) Overlay** have more restrictive environmental protection standards (e.g., a minimum 50-foot wetland buffer is required instead of a 25-foot wetland buffer on non-NRMA properties).
- **Environmental Core Overlay**, which was adopted to implement the county's Smart Growth Initiative, depicts an area of interconnected natural systems of environmentally sensitive lands, including public and private conservation areas and lands linking these areas where possible to achieve wildlife and habitat connectivity.



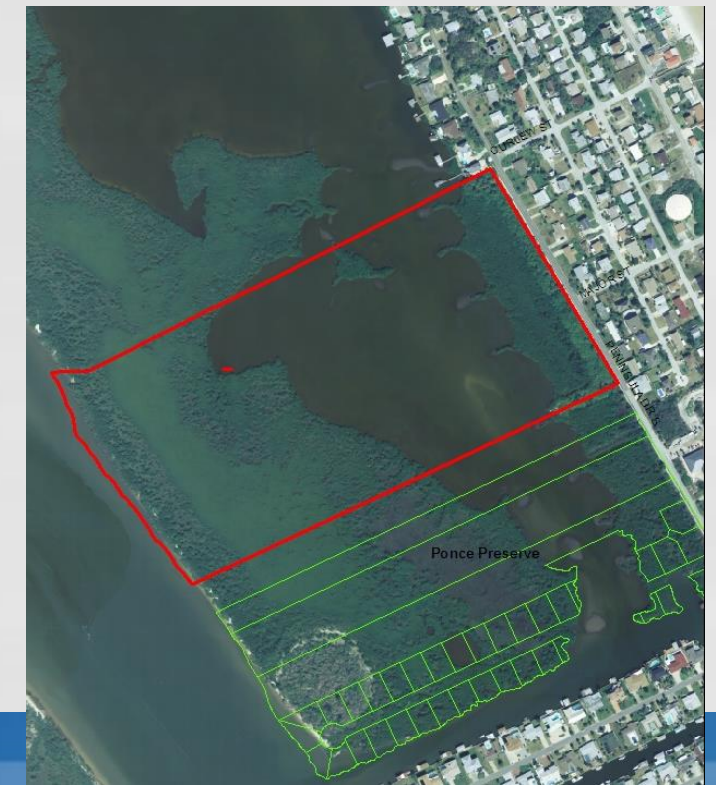
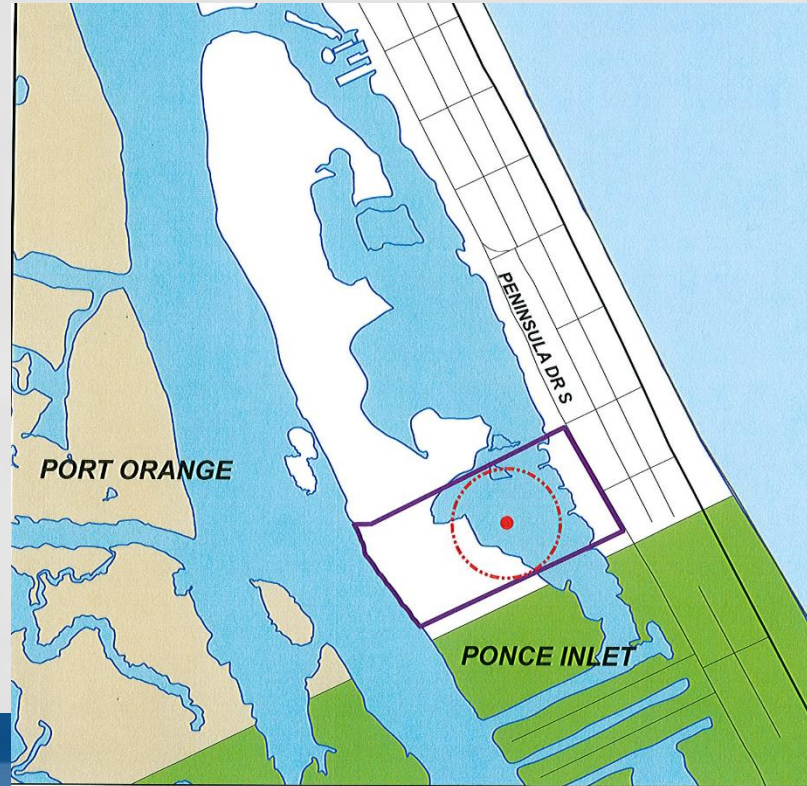
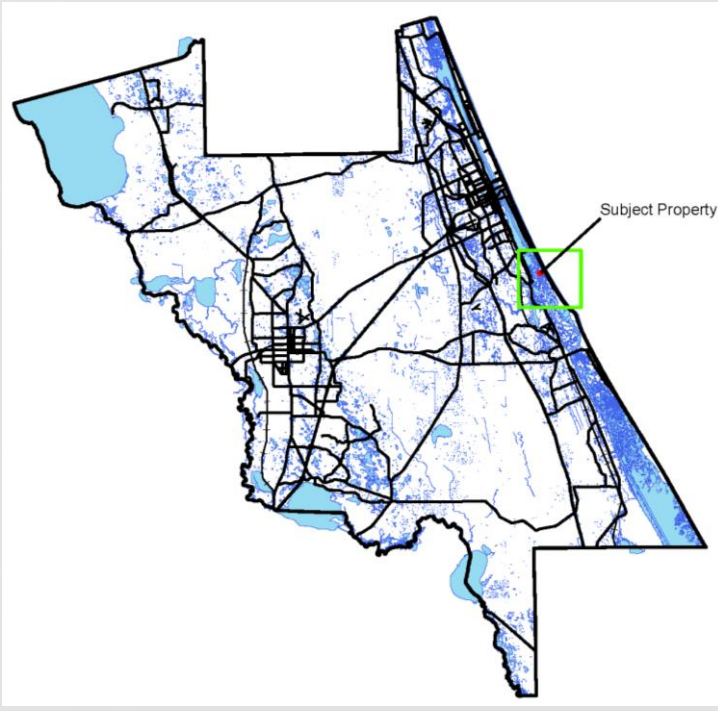
Doan

Acquisition Type	Fee Simple
Size	4.3 acres
Site Ranking Criteria	11 of 22
Potential Matching Funds	SJRWMD
Attributes	Adjacent to Doris Leeper Spruce Creek Preserve



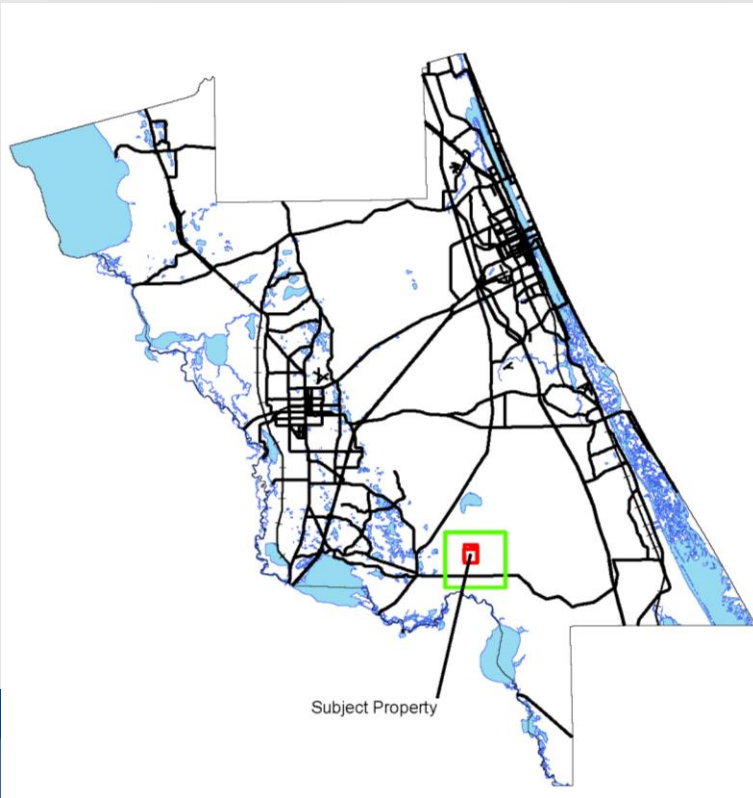
Mazeika

Acquisition Type	Fee Simple
Size	48 acres
Site Ranking Criteria	13 of 22
Potential Matching Funds	None
Attributes	Adjacent to the Ponce Preserve Conservation Project



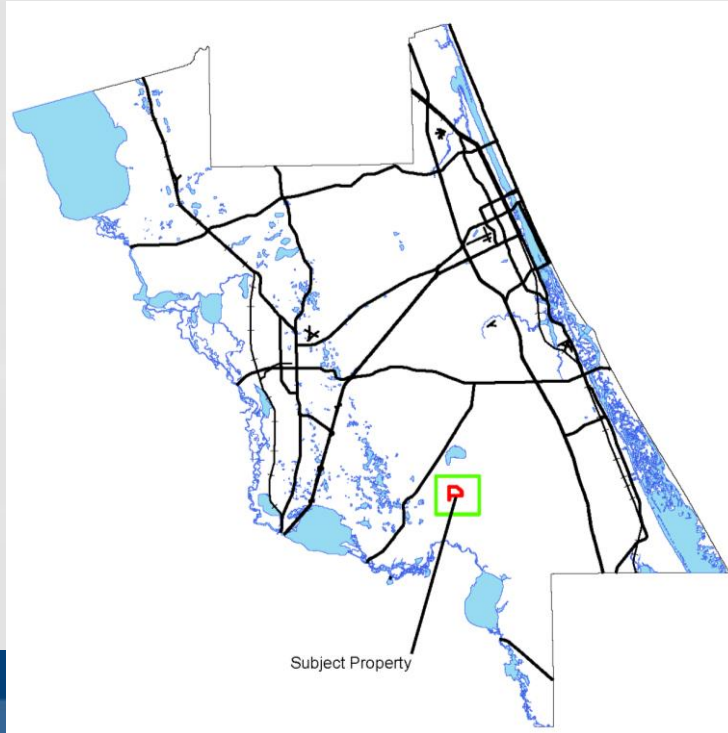
Schroeder-Bowman

Acquisition Type	Fee Simple
Size	858 acres
Site Ranking Criteria	13 of 18
Potential Matching Funds	SJRWMD
Attributes	Adjacent to the Palm Bluff Conservation Area, within the Volusia Conservation and Wildlife Corridors.



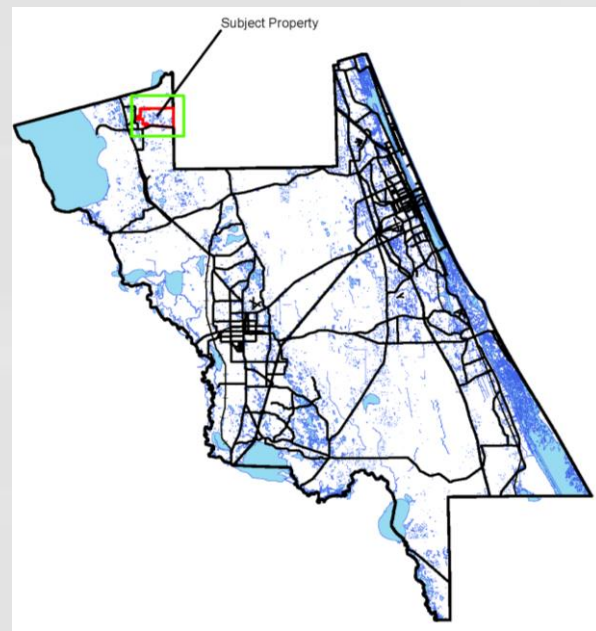
Russell

Acquisition Type	Conservation Easement
Size	422 acres
Site Ranking Criteria	13 of 18
Potential Matching Funds	SJRWMD
Attributes	Adjacent to the Palm Bluff Conservation Area, within the Volusia Conservation and Wildlife Corridors



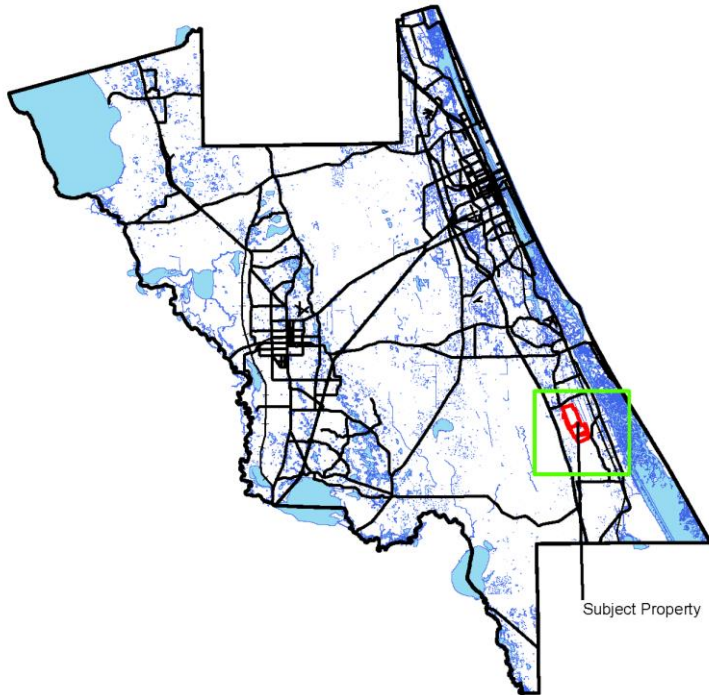
Baylor

Acquisition Type	Agricultural Easement (Forests and Farmlands)
Size	3,576 acres
Site Ranking Criteria	9 of 12
Potential Matching Funds	USDA/NRCS
Attributes	NRMA and ECO Overlays, Wildlife Corridor, abuts Crescent Lake Conservation Area



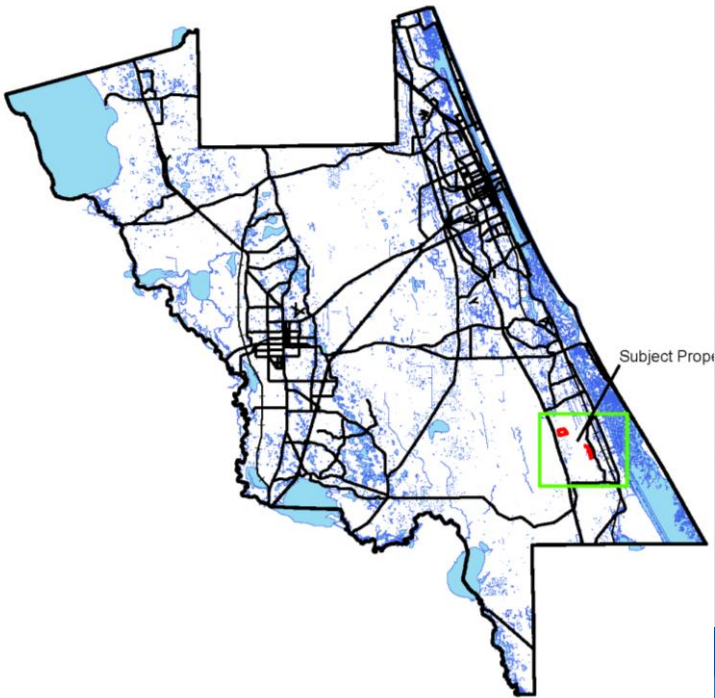
Stewart & Howarth

Acquisition Type	Fee Simple
Size	1,954 acres
Site Ranking Criteria	11 of 19
Potential Matching Funds	Florida Forever Indian River Lagoon Blueway
Attributes	NRMA and ECO overlays, Wildlife Corridor, abuts Turnbull Hammock Conservation Area



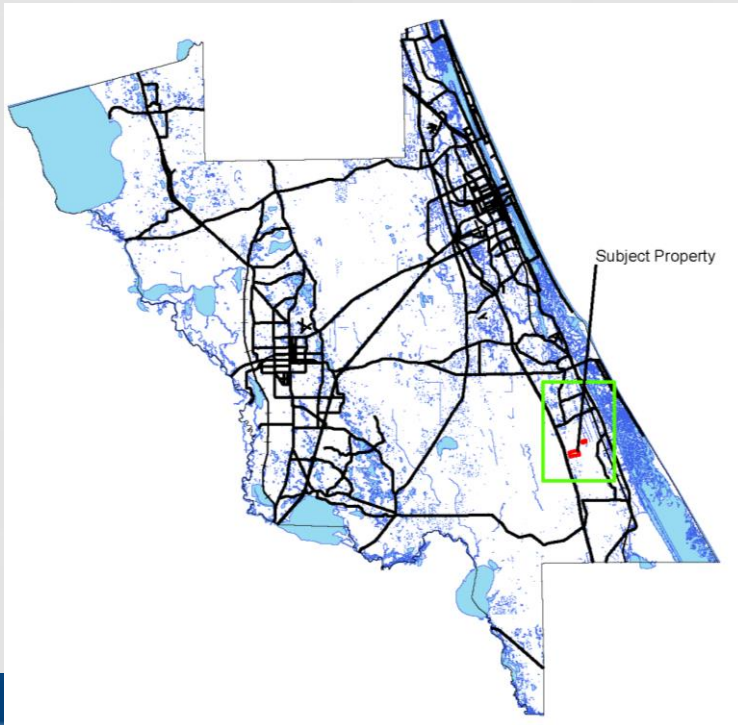
Stewart Family

Acquisition Type	Fee Simple
Size	274 acres
Site Ranking Criteria	11 of 19
Potential Matching Funds	Florida Forever Indian River Lagoon Blueway
Attributes	NRMA and ECO overlays, Wildlife Corridor, abuts Turnbull Hammock Conservation Area

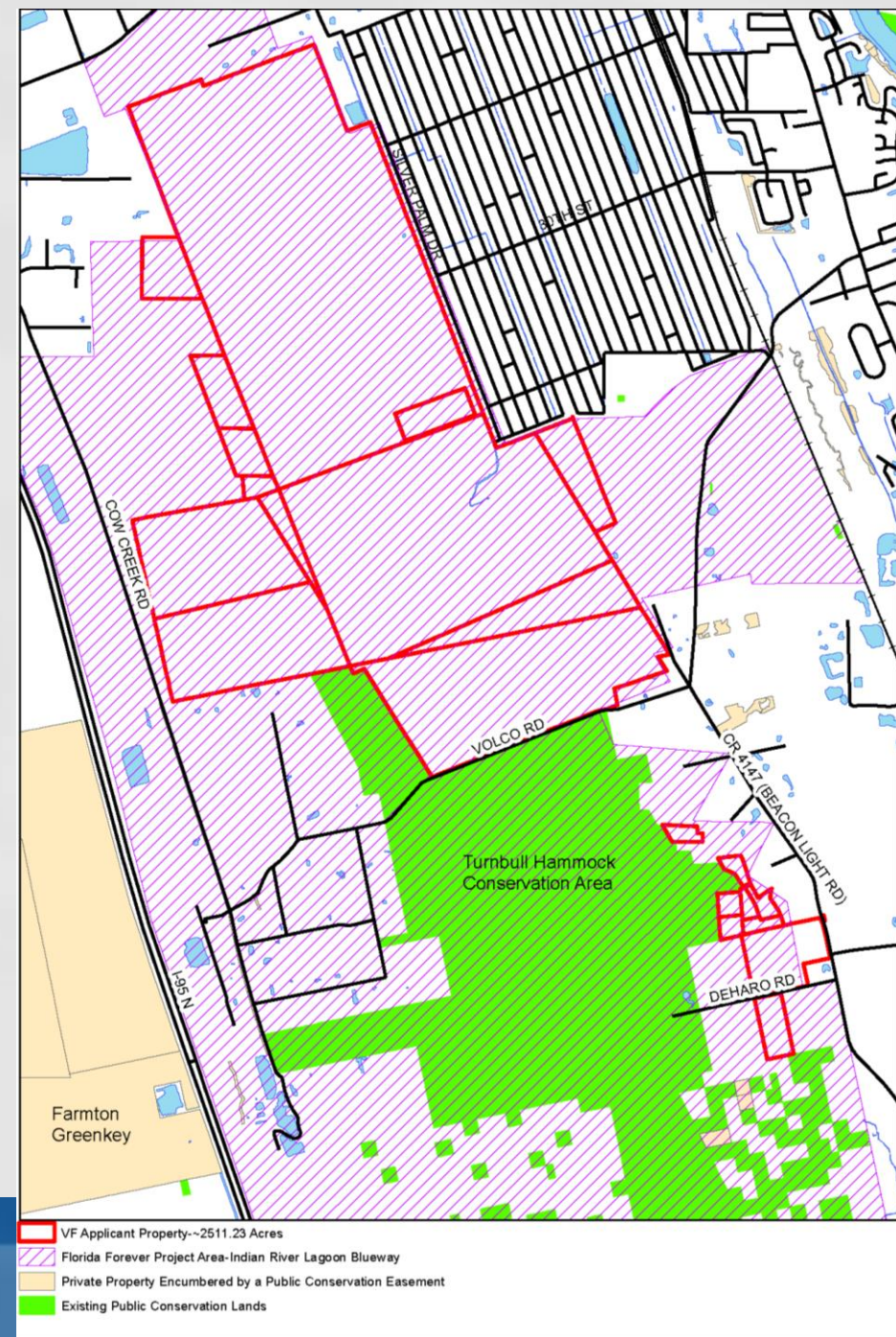


CMM & CF Investments

Acquisition Type	Fee Simple
Size	195 acres
Site Ranking Criteria	11 of 19
Potential Matching Funds	Florida Forever Indian River Lagoon Blueway
Attributes	NRMA and ECO overlays, Wildlife Corridor, abuts Turnbull Hammock Conservation Area

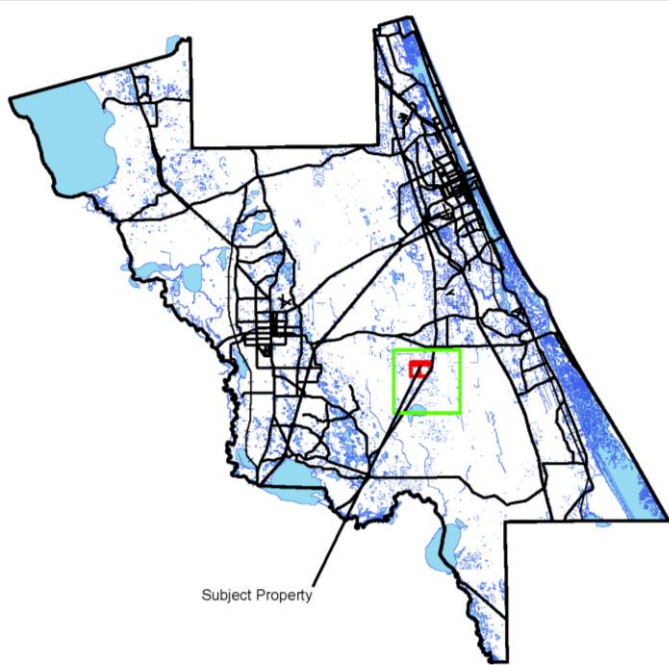


Stewart Properties Combined



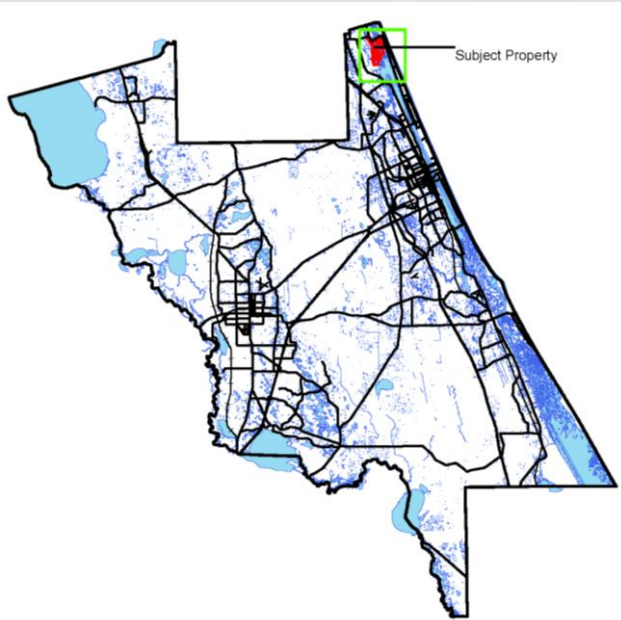
Carter Volusia Land Trust

Acquisition Type	Fee Simple
Size	1,339 acres
Site Ranking Criteria	11 of 19
Potential Matching Funds	None identified at this time
Attributes	NRMA and ECO overlays, Wildlife Corridor, Southwest corner abuts Deep Creek Preserve



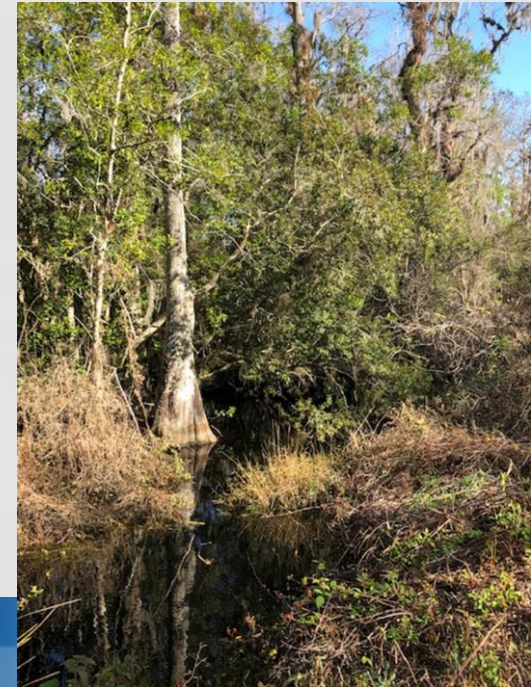
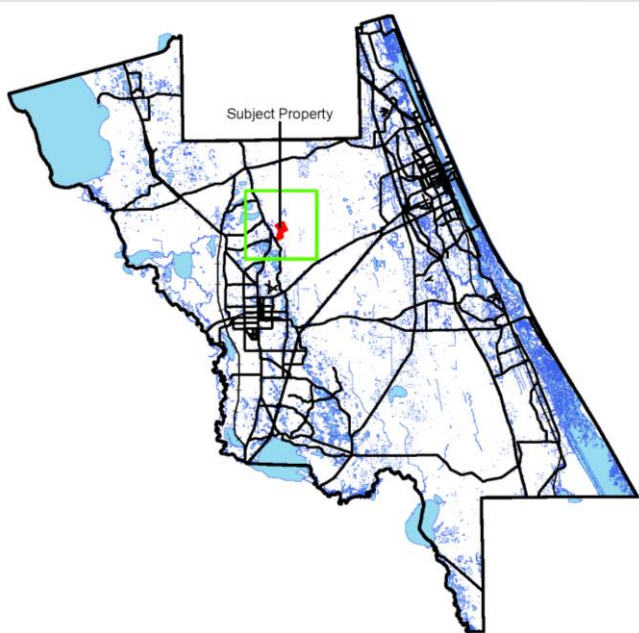
Frank A. Ford Trust

Acquisition Type	Fee Simple
Size	1,200 acres
Site Ranking Criteria	11 of 19
Potential Matching Funds	FDEP exploring funding options
Attributes	NRMA overlay, Bulow Creek State Park abuts the property on 3-sides and a portion is connected to North Peninsula State Park



Stonestreet

Acquisition Type	Conservation Easement
Size	368 acres
Site Ranking Criteria	11 of 19
Potential Matching Funds	None identified at this time
Attributes	NRMA overlay, Wildlife Corridor, abuts Clark Bay Conservation Area, enrolled in FL. Forest Services Best Management Practices Program



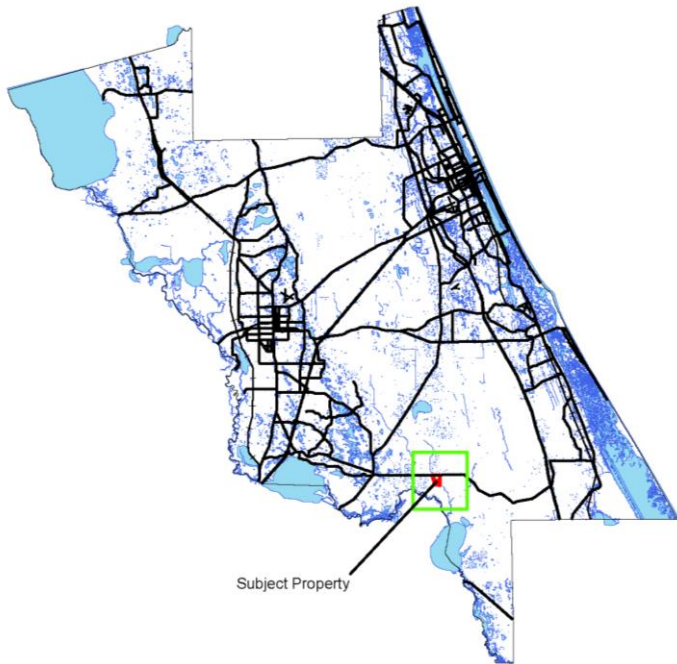
Kirton

Acquisition Type	Fee Simple
Size	332 acres
Site Ranking Criteria	9 of 19
Potential Matching Funds	No funding partner with application as submitted
Attributes	Contains headwaters of the Tomoka River, property also contains a closed landfill



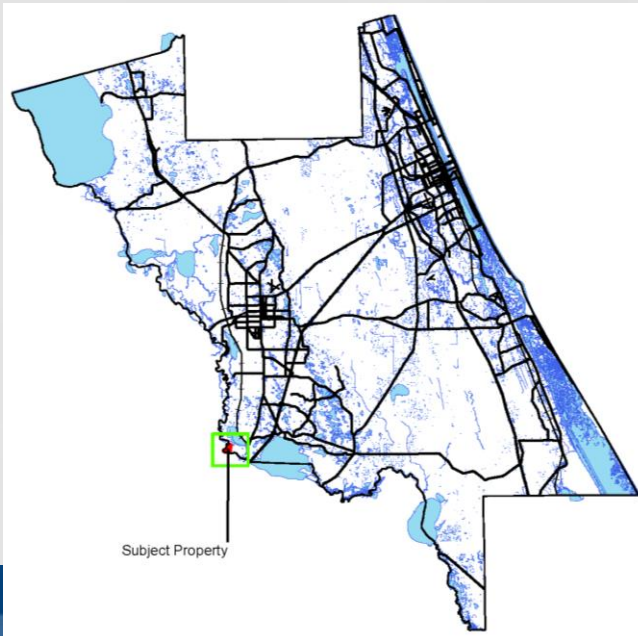
Deep Creek Reserve

Acquisition Type	Conservation Easement
Size	300 acres
Site Ranking Criteria	12 of 19
Potential Matching Funds	FDACS contingent upon FY22-23 budget approval
Attributes	NRMA and ECO overlays, Wildlife Corridor, actively managed, abuts Farmton Green Key Conservation Area



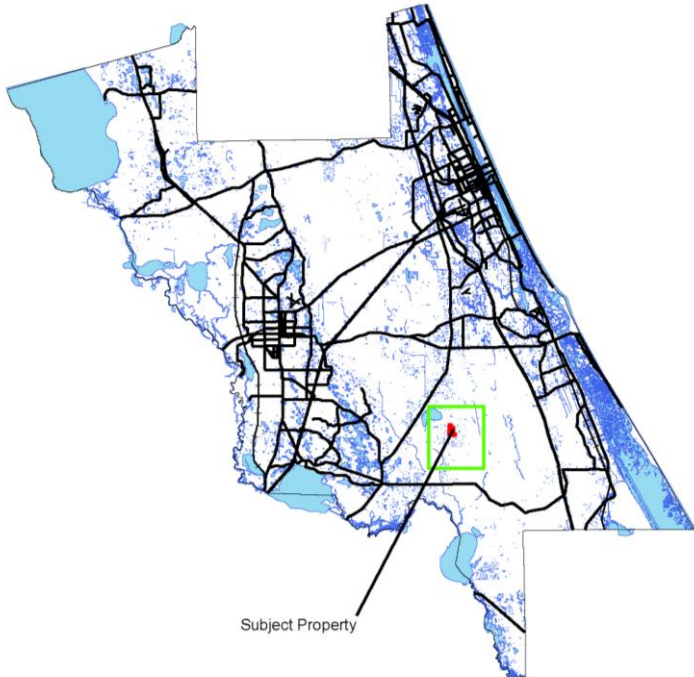
Recicar Trust

Acquisition Type	Fee Simple
Size	170 acres
Site Ranking Criteria	11 of 19
Potential Matching Funds	City of DeBary and Florida Forever Wekiva-Ocala Greenway
Attributes	Wildlife Corridor, contains historical resources, would be managed by the city, across the river from Black Bear Wilderness Area



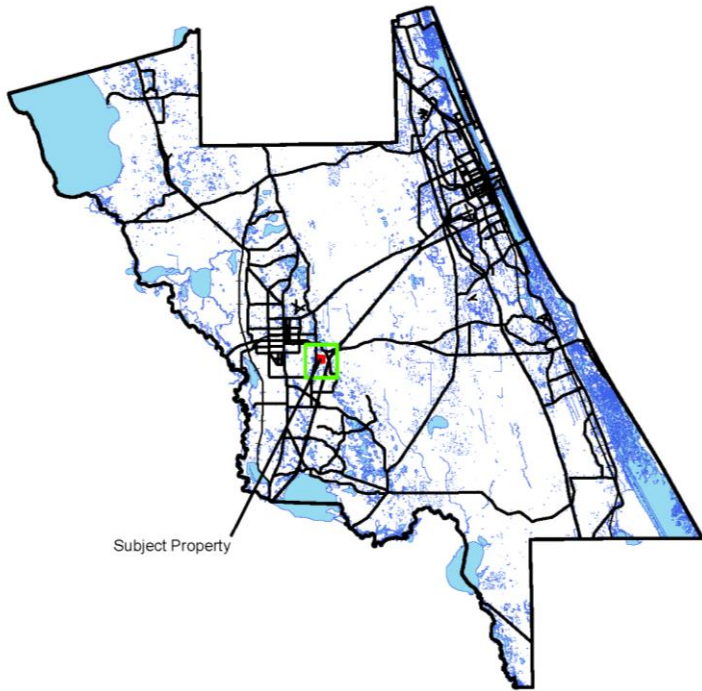
Lukas Nursery

Acquisition Type	Fee Simple
Size	160 acres
Site Ranking Criteria	10 of 19
Potential Matching Funds	Florida Forever Volusia Conservation Corridor
Attributes	NRMA & ECO Overlays, Wildlife Corridor, abuts Wiregrass Prairie Preserve



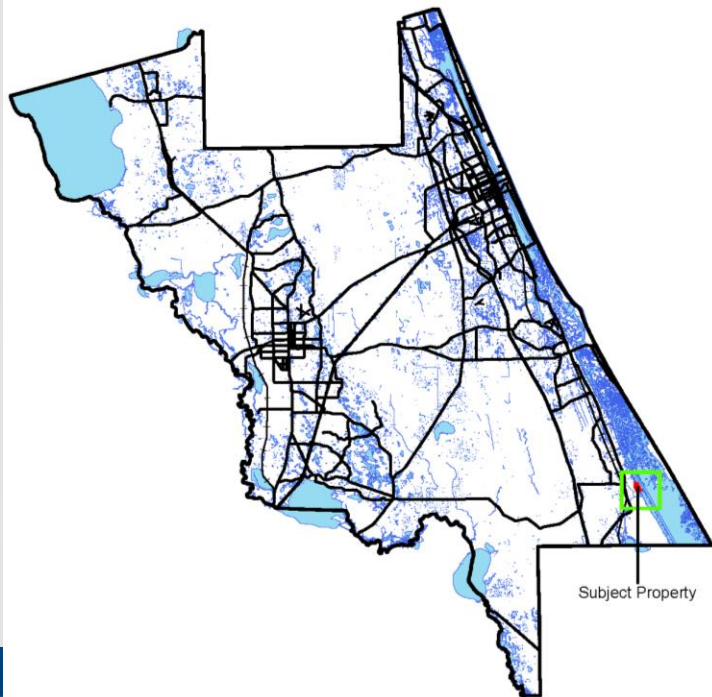
Volusia Groves & Cattle

Acquisition Type	Fee Simple
Size	128 acres
Site Ranking Criteria	13 of 19
Potential Matching Funds	City of DeLand desires to manage and provide for passive recreation on the property
Attributes	Moore Lake (16 acres), diverse habitats, access easement provided



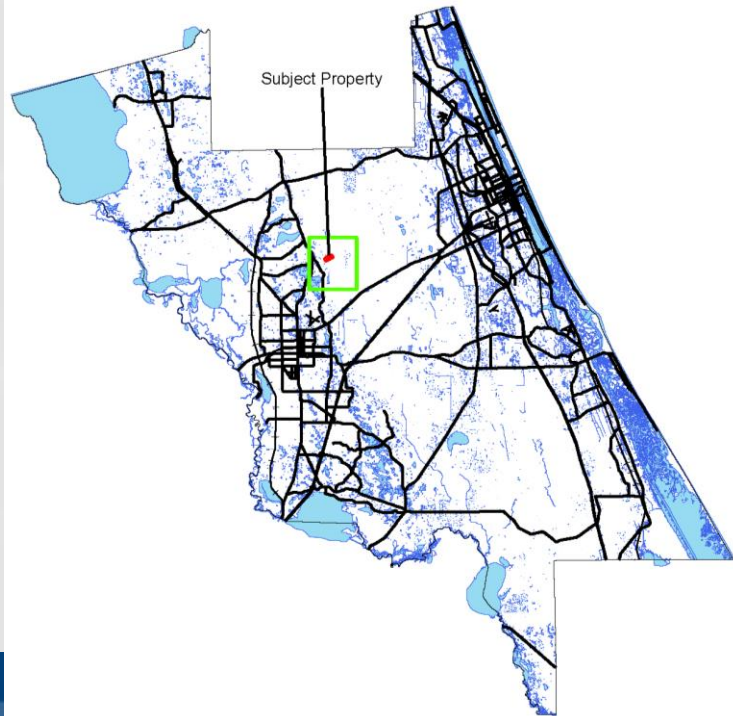
Sternstein

Acquisition Type	Fee Simple
Size	71 acres
Site Ranking Criteria	10 of 19
Potential Matching Funds	Florida Forever Indian River Lagoon Blueway
Attributes	ECO overlay, Wildlife Corridor, abuts Canaveral National Seashore



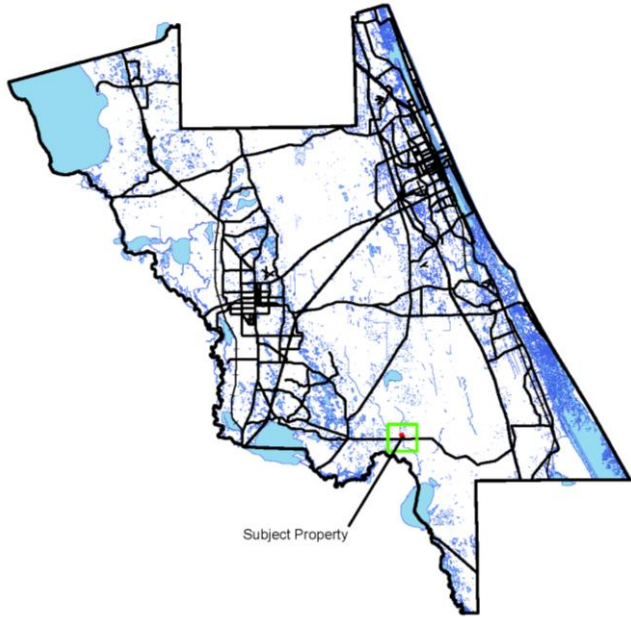
Wisniewski

Acquisition Type	Conservation Easement
Size	69 acres
Site Ranking Criteria	9 of 19
Potential Matching Funds	None identified at this time
Attributes	NRMA overlay, Wildlife Corridor, abuts Clark Bay Conservation Area



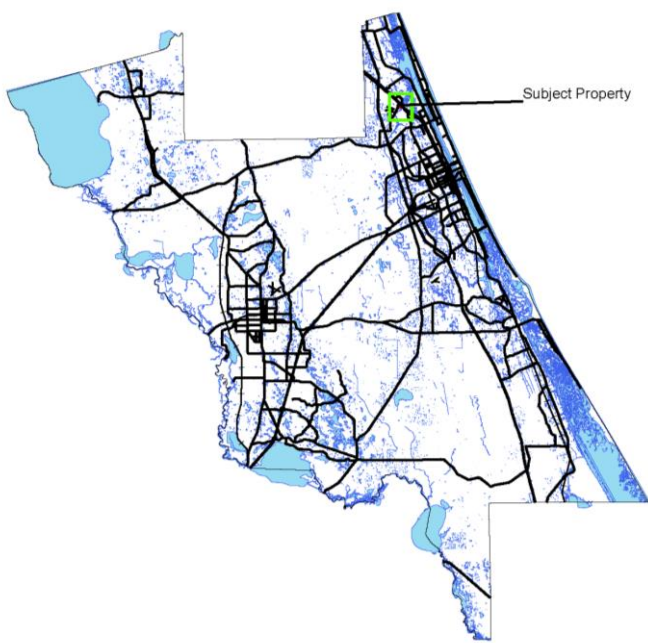
Baker

Acquisition Type	Fee Simple
Size	41 acres
Site Ranking Criteria	10 of 19
Potential Matching Funds	None identified at this time
Attributes	Wildlife Corridor, Deep Creek flows along the western boundary



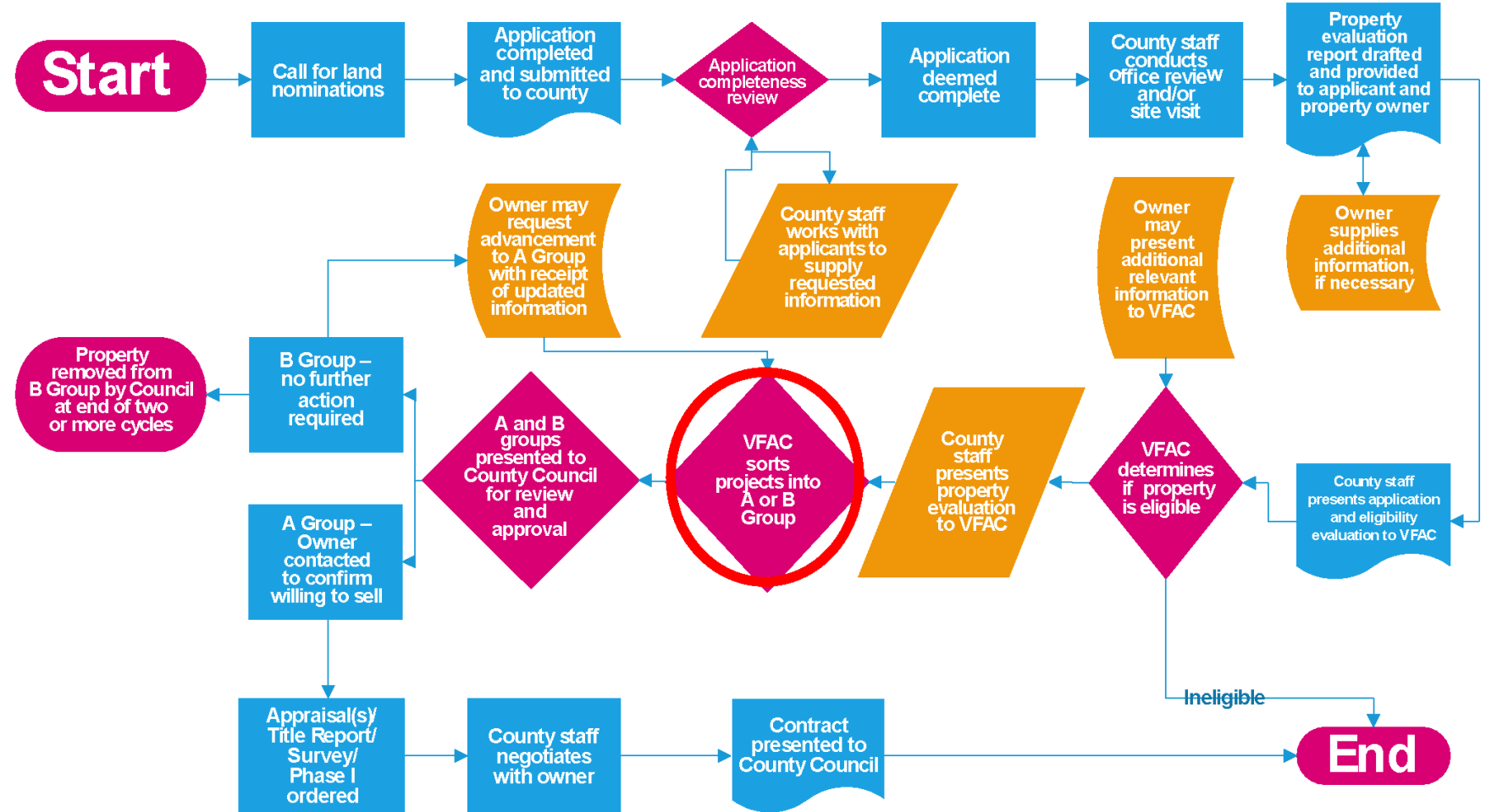
Penland & Pomeranke

Acquisition Type	Fee Simple
Size	19 acres
Site Ranking Criteria	10 of 19
Potential Matching Funds	City of Ormond Beach desires to manage and provide for passive recreation on the property
Attributes	Along the Tomoka River and contains Bear Creek tributary, abuts Riverbend Nature Park



Volusia Forever Process Flowchart

Process Update



Flowchart Shape Key



Timeline for Next Cycle

- **April 1 – May 13:** Call for applications/nominations
- **June 22:** VFAC Eligibility Meeting
- **August 24:** VFAC Sorting Meeting
- **October 3 – November 14:** Call for applications/nominations
- **December 7:** VFAC Meeting

